

## **RADIANT STAR — J&G FORBES BOAT YARD**



**Судостроитель:**

J&G FORBES BOAT YARD

**Год постройки:** 1956

**Модель:** Траулер

**Цена:** ЦЕНА ЯХТЫ ПО ЗАПРОСУ

**Местонахождение:** United States

**Длина общая:** 75' 0" (22.86m)

**Ширина:** 20' 0" (6.10m)

**Мин. осадка:** 9' 6" (2.90m)

**Крейс. скорость:** 8 Kts. (9 MPH)

Купить **RADIANT STAR — J&G FORBES BOAT YARD** а также выбрать подходящую вам яхту из нашего каталога яхт вам поможет опытный яхтенный брокер Андрей Шестаков. На сегодняшний день компания **Shestakov Yacht Sales Inc.** имеет большое количество яхт в собственном списке продаж, а также тесно сотрудничает со всеми крупными яхтенными производителями по всему миру. Для того чтобы купить яхту **RADIANT STAR — J&G FORBES BOAT YARD** а также проконсультироваться по любому вопросу связанному с покупкой, продажей, чартером яхт позвоните по телефону **+7(918)465-66-44**.

# ОГЛАВЛЕНИЕ

ОГЛАВЛЕНИЕ	2
ХАРАКТЕРИСТИКИ	5
Обзор	5
Основная информация	5
Размеры	5
Скорость, вместимость и масса	5
Размещение	6
Корпус и палуба	6
Информация о двигателе	6
ПОДРОБНОЕ ОПИСАНИЕ	7
Accommodations	7
Galley	7
Wheelhouse	7
Electrical System	8
Deck and Hull	8
Engine /Mechanical Equipment	9
History	9
Remarks	10
Exclusions	10
Исключения	10
Отказ от ответственности	10
ФОТОГРАФИИ	12
Wheelhouse Steering	12
Wheelhouse	12
Wheelhouse	12
Wheelhouse	12
Up to Wheelhouse	13
Navigation Station	13

Opposite Navigation Station	13
Navigation Station	13
Salon Looking Forward	14
Salon Looking Aft	14
Salon Lounge	14
Salon	14
Stairs to Salon	14
Main Salon	14
Main Salon	15
Vast Dining and Entertainment Spaces	15
Passageway Bunks / Foldaway Upper	15
Galley	15
Spacious Bunks in Fore Cabins	16
Starboard Stateroom	16
Aft Cabin Starboard Berth	16
Aft Cabin Port Berth	16
Aft Cabin Settee	16
Aft Cabin Fireplace and Settee	16
Dayhead in Wheelhouse	17
Tub in Master	17
Washer/Dryer in Forward Head	17
Electrical Panel at Navigation Station	17
Broad Side Decks	18
Deck Looking Forward	18
Deck Looking Aft	18
Aft Deck	18
Mast with Ratlines to Lookout	19
Warping Winch with Dinghy Davits	19
Cabin Sides with Lifering	19

---

Foredeck Hatch	19
Spacious Engine Room	20
Gardner Diesel	20
Mezzanine Level Machinery Space	20
Diesel Furnace and Genset	20
Bow	20
Profile Port	20
Profile	21
Underway Deception Pass	21
<b>КОНТАКТЫ</b>	<b>22</b>
Контактная информация	22
Телефоны	22
Время работы	22
Адрес	22

# ХАРАКТЕРИСТИКИ

## Обзор

"Radiant Star" has never looked better. Currently (Spring of 2014), "Radiant Star" is in excellent condition and shines from the tops of her gleaming purple heart teak caprails to her freshly painted keel. Out of the water in August 2013, as she is every year, this yacht has been consistently maintained and shows knowledgeable owners attentions. "It is not expensive to do, it is just regular." Refastened below the waterline in 2005. Ready for your cruising adventure!

## Основная информация

**Тип судна:** Траулер

**Подкатегория:** Водоизмещение

**Модельный год:** 1956

**Год постройки:** 1956

**Год обновления:** 1997

**Страна:** United States

**Верх:** 2356

## Размеры

**Длина общая:** 75' 0" (22.86m)

**Ширина:** 20' 0" (6.10m)

**Мин. осадка:** 9' 6" (2.90m)

## Скорость, вместимость и масса

**Крейс. скорость:** 8 Kts. (9 MPH)

**Крейсерская скорость поворота:** 1050 Kts.

**Дальность на крейсерской скорости:** 1400

**Макс. скорость поворота:** 1200 Kts.

**Водоизмещение:** 198000 Pounds

**Вместимость воды:** 800 Gallons

**Объем топливного бака:** 1100 Gallons

## Размещение

---

Всего кают: 4

Спальные места: 8

Всего ком. состава: 3

Койки экипажа: 1

Спальных мест экипажа: 1

Комм. состав экипажа: 1

## Корпус и палуба

---

Материал корпуса: Wood

Комплектация корпуса: Full  
Displacement

Дизайнер корпуса: J&G Forbes

## Информация о двигателе

---

Двигатели: 1

Производитель: Gardner

Модель: 8L3B

Тип двигателя: Inboard

Тип топлива: Diesel

---

# ПОДРОБНОЕ ОПИСАНИЕ

---

## Accommodations

---

Forward custom circular staircase leads below. Starboard and port staterooms with large upper and lower berths. 9' headroom! Opening hatches and deck prisms. Vanity table in each. Hanging locker. Head is aft to port with home-sized shower. Washer/dryer combo 110v.(needs parts). Vacuflush head. Aft is the main salon with diesel fireplace. This area features antique furniture from European cruise liners. Full-sized, glass-faced pull down desk. Gorgous tables and chairs by 19th century craftsmen. Magnavox 27" TV and DVD. Sony sound system. Storage. Wet bar with antique sink. U-Line icemaker. Galley to port. Proceeding up a ladder into the Pilothouse, there is seating for 6 with full visibility. Aft is the full size navigation station with two large passageway berths. There is a day head. Engine room access and stairs to the aft stateroom. The master cabin has a WC compartment with tub and vacuflush head, sink and vanity mirror outside. There are very large port and starboard 6'6" double beds. Numerous drawers and two large hanging lockers. Plus there is a 6'6" settee/berth with a second fireplace which makes a luxurious reading nook.

## Galley

---

Expansive countertops, modern appliances, and tasteful use of wood. There is a separate wet bar forward with breakfast counter.

- Large 2-sided chopping block w/propane Force 10 4-burner stove
- Shutoff valve
- Microwave
- Amana deep freezer (110 and inverter)
- Trash/recycle bin
- Fridge/freezer
- Hurricane instant hot water

## Wheelhouse

---

Aft wheelhouse has settee - and two additional pull-out seats. There are two bunks in passageway, opposite the chart sized navigation station. Well ventilated and spacious. Aft has day head (manual) with sink and opening port. Heart interface. RC2000 remote Trace system 24 volt inverter.

- Simrad CX54 GPS chartplotter
- Micrologic Mariner GPS
- Robertson autopilot with rudder angle indicator w/remote

- Kodon MD 3000 radar - original
- Datamarine wind/speed/ direction
- ICOM VHF
- (2) Compass
- Clearview screen (in op)
- (2) Large banquette seats in wheelhouse
- (2) Pop up seating in wheelhouse
- Chart drawers

## Electrical System

Battery - 1 remote for radio; 2 x 24 volt engine start; 2 x 6volt for 12 volt system; 4 x 6v for 24 volt system; 1 x 24 volt. 8 kva Westerbeke (new in 1995) for hydraulics. Has separate battery. 2.3kva genset.

## Deck and Hull

21/2" Larch planking over 4 3/4" x 6 1/2" oak frames on 16" centers, doubled below the turn of the bilge. Aluminum wheelhouse. Poured concrete ballast. Galvanized nails, refastened 2006 with 3000 5" galvanized square ship spikes.

- Dry stack exhaust
- 2006 all Pistons replaced
- Massive 5" shaft
- Spare parts
- (6) lifejackets
- Emergency tiller
- Fire suppression system
- Hydraulic dinghy davit
- 2 sets of chocks for large and small tenders
- 15' Zodiac Hummer with outboard
- Anchor windlass  
Kolstrand 18 x  
26 hydraulic with  
350# Navy style
- 600' 5/8" cable
- 85' 5/8" chain
- Full rail covers  
on varnished  
"purpleheart"  
teak coamings
- Hull covers for  
mahogany  
bulkheads,  
treated with  
seatol
- Vast Teak deck  
treated with  
seatol
- Aft 2-direction  
hydraulic



- capstan
- Stern anchor
- Skylight is removeable
- Boarding gangway

## Engine /Mechanical Equipment

---

Range: 1400 nautical miles Fuel Burn: 6 Gallons per 8 nautical miles Fuel: 1100 gallons (estimate) Water: 800 gallons (estimate)

- Buderus diesel furnace with hot water circulation
- Fuel manifold w/ Racor filter plus separate dual Racor
- High output, engine driven bilge pump and deck wash
- 110v high volume bilge pump, 12v bilge pump
- 24v alternator
- Smart alternator
- Hydraulic steering

## History

---

Originally built in 1956 by J&G Forbes near Fraserburgh, Scotland, Radiant Star spent her first 38 years working as a Herring Drifter in the North Sea fishing fleet 6 days a week off the craggy shoals of Scotland. In 1994, Radiant Star was slated to be chain sawed, wrecked as part of a government buy-out of the fleet. Her current owner, who is a Scottish American, knew he wanted to convert a ship of this type and he travelled to Scotland to identify candidate vessels from this fleet. After shortlisting 7 and visiting all of these he finally selected Radiant Star. With much local knowledge to ground him, he focused on the J&G Forbes construction, and was finally won over by the graceful sheer line and the large 'fish hold' forward, which would accommodate the apartment he intended to build into the vessel. Standing on the blustery quay in the Shetland Islands, he shook hands with the fisherman who had owned her since 1964 and the sturdy trawler began her conversion into a yacht.

The new owners asked that the yacht be delivered to Fraserburgh, where they worked with the local talent to build a new galley into the large hold forward. They also did some simple preparations for the long voyage back to Seattle. They then took the yacht up the Thames River to London where they found many refurbished antiques from the local shops which were eventually built into the vessel. These include a large dining table, book case, display cabinet, officers desk and chairs which were all items salvaged from steam ships and cruise liners of the

Victorian age. These beautiful items with their plaques are now built in place as part of the beautiful interior fit out aboard Radiant Star.

The new Owners, with some trusty friends, cruised the yacht home, rounding Cape Horn in January of 1995 and arriving in Anacortes in April, having cruised 18,000 nm and 2300 engine hours. It was there that the real work on the conversation began! The original 3" decks were repaired as needed and re-faired. They were then rubberized before a new 2" fir deck was laid. The bottom was refastened with 3,000 huge 5" square spikes. The bulkwarks were replaced with mahogany and capped with purple heart, much of which had to be steam bent to the required curve. All of the exterior work was done by Guemes Island boatbuilder David Hartford and his crew. David Bass did the interior.

Radiant Star has been featured in Passagemaker Magazine (Spring 1999), in Wooden Boat (July 2006), as well as in the prestigious publication by the Cruising Club of America (CCA). She has been voted Best in Show and Peoples Choice at recent Trawlerfest events.

## Remarks

---

"Radiant Star" has never looked better. Currently (Spring of 2014), "Radiant Star" is in excellent condition and shines from the tops of her gleaming purple heart teak caprails to her freshly painted keel. Out of the water in August 2013, as she is every year, this yacht has been consistently maintained and shows knowledgeable owners attentions. "It is not expensive to do, it is just regular." Refastened below the waterline in 2005. Ready for your cruising adventure!

## Exclusions

---

All personal gear; artwork; loose items; galley gear; CD's; charts; fishing equipment; tools; supplies and items not specifically listed on equipment list specifications sheet.

## Исключения

---

При продаже яхты исключаются личные вещи владельца.

## Отказ от ответственности

---

Компания предоставляет описание судна или яхты добросовестно, но не может гарантировать точность этой информации, а также не ручается за техническое состояние. Покупатель должен проинструктировать своих агентов или оценщиков исследовать представленную информацию более подробно, по собственному желанию. Продажа судна или яхты, изменение цены или снятие с продажи будет происходить без предварительного уведомления.

# ФОТОГРАФИИ

**Wheelhouse Steering**



**Wheelhouse**



**Wheelhouse**



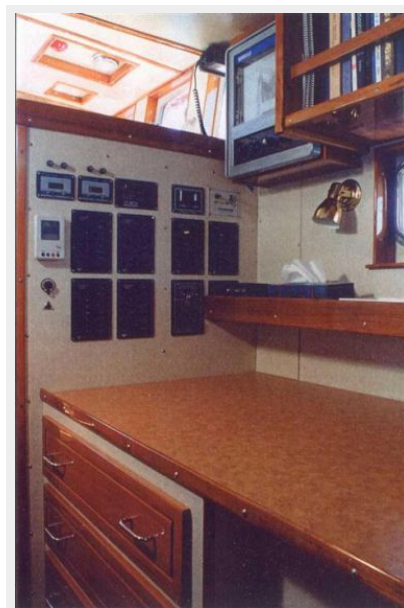
**Wheelhouse**



**Up to Wheelhouse**



**Navigation Station**



**Opposite Navigation Station**



**Navigation Station**



**Salon Looking Forward**



**Salon Looking Aft**



**Salon Lounge**



**Salon**



**Stairs to Salon**



**Main Salon**



### Main Salon



### Vast Dining and Entertainment Spaces



### Passageway Bunks / Foldaway Upper



### Galley



**Spacious Bunks in Fore Cabins**



**Starboard Stateroom**



**Aft Cabin Starboard Berth**



**Aft Cabin Port Berth**



**Aft Cabin Settee**



**Aft Cabin Fireplace and Settee**





**Dayhead in Wheelhouse**



**Tub in Master**



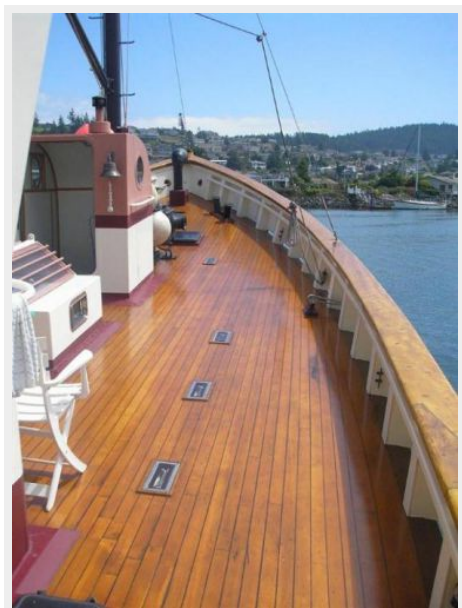
**Washer/Dryer in Forward Head**



**Electrical Panel at Navigation Station**



### Broad Side Decks



### Deck Looking Forward



### Deck Looking Aft



### Aft Deck



### Mast with Ratlines to Lookout



### Warping Winch with Dinghy Davits



### Cabin Sides with Lifering



### Foredeck Hatch



### Spacious Engine Room



### Gardner Diesel



### Diesel Furnace and Genset



### Mezzanine Level Machinery Space



### Bow



### Profile Port



## Profile



## Underway Deception Pass



# КОНТАКТЫ

---

Андрей Шестаков (Andrey Shestakov) – ведущий яхтенный брокер отдела продаж яхт и судов компании Shestakov Yacht Sales Inc. Официальный представитель Shestakov Yacht Sales Inc. для русскоговорящих клиентов в центральном офисе компании в Майами/Форт Лодердейл/Флорида/США.

## Контактная информация

---

Email: [andrey@shestakovyachtsales.com](mailto:andrey@shestakovyachtsales.com)

Web: [shestakovyachtsales.com](http://shestakovyachtsales.com)

## Телефоны

---

Краснодарский край: **+7(918)465-66-44**

США, Майами, Флорида: **+1(954)274-4435**

## Время работы

---

Понедельник – Суббота: **9:00 - 21:00**  
EDT

Воскресенье: **Закрито**

## Адрес

---



Harbour Towne Marina, 850 NE 3rd St,  
STE 213, Dania, FL 33004