

ATLAS — TRUMPY



Builder: TRUMPY

Year Built: 1960

Model: Motor Yacht

Price: PRICE ON APPLICATION

Location: United States

LOA: 57' 0" (17.37m)

Beam: 14' 2" (4.32m)

Min Draft: 4' 0" (1.22m)

Our experienced yacht broker, Andrey Shestakov, will help you choose and buy a yacht that best suits your needs **ATLAS — TRUMPY** from our catalogue. Presently, at Shestakov Yacht Sales Inc., we have a wide variety of yachts available on our sale's list. We also work in close contact with all the big yacht manufacturers from all over the world.

If you would like to buy a yacht **ATLAS — TRUMPY** or would like help answering any questions concerning purchasing, selling or chartering a yacht, please call **+1(954)274-4435**

TABLE OF CONTENTS

TABLE OF CONTENTS	2
SPECIFICATIONS	5
Overview	5
Basic Information	5
Dimensions	5
Speed, Capacities and Weight	5
Accommodations	6
Hull and Deck Information	6
Engine Information	6
DETAILED INFORMATION	7
Vessel Walkthrough	7
Galley	7
Electrical System	7
Engines	8
Mechanical Equipment	8
Features	8
Flybridge	9
Navigation	9
Hull	9
Cockpit	9
Remarks	9
Exclusions	9
Disclaimer	10
PHOTOS	11
Cockpit	11
Lower Helm Pilothouse	11
Flybridge Helm	11
Lower Helm Navigation and Instruments	11

View of Foredeck from Flybridge	12
Portside seating in Flybridge	12
Foredeck	12
Flybridge Helm to starboard	12
Foredeck Seating	13
Flushdeck aft starboard L-Settee	13
Wet Bar forward in Flushdeck	13
Saloon forward	13
Saloon aft	13
Saloon to port	13
Dinette on portside opposite Galley	14
VIP Guest Stateroom	14
MSR port single berth	14
Master Stateroom Bureau	14
MSR Ensuite Head	15
MSR Vanity Desk	15
VIP Guest Stateroom	15
Nightstand in VIP Guest Stateroom	15
Dinette on port, opposite Galley	16
Galley/Dinette Passageway to Crew Qtrs	16
Passageway through Galley to Crew Qtrs	16
Galley	16
Crew Quarters forward	17
Galley	17
Galley	17
Crew Head	17
Crew Head with Sink	18
Master Stateroom with twin berths	18
MSR ensuite Head	18

MSR Ensuite Shower	18
Guest/Day Head	19
Guest Shower	19
Engine Room	19
Starboard Engine	19
Port Engine	19
Port Engine Room	19
Genset	20
Port Engine Saloon Hatch	20
Flushdeck Seating to starboard	20
Flushdeck to portside	20
Port, Underway	20
Flybridge seating	20
Stern Profile, Underway	21
Port Profile, Underway	21
Fore Port Profile, Underway	21
Port, Underway	21
Bow Profile, Underway	21
Port Bow Profile, Underway	21
CONTACTS	22
Contact details	22
Telephones	22
Office hours	22
Address	22

SPECIFICATIONS

Overview

A magnificently restored and maintained Trumpy by a knowledgeable and loving owner who has returned her to original or superior condition. Her interior has been totally redone in both cosmetics and decorating. Her engine room has been detailed, electrical system updated, aids to navigation have been replaced or updated. Exterior teak bright been replaced. This boat has been totally restored and is ready for immediate usage. This is a rare find for the true Trumpy connoisseur. Atlas won "Best In Show" at the 2007 Ocean Reef Club Vintage weekend, a true testament that she is in "Palm Beach Condition."

Basic Information

Category: Motor Yacht	Model Year: 1960
Year Built: 1960	Country: United States
Fly Bridge: Yes	Cockpit: Yes

Dimensions

LOA: 57' 0" (17.37m)	LWL: 53' 8" (16.36m)
Beam: 14' 2" (4.32m)	Min Draft: 4' 0" (1.22m)

Speed, Capacities and Weight

Gross Tonnage: 27 Pounds	Water Capacity: 170 Gallons
Fuel Capacity: 450 Gallons	

Accommodations

Total Cabins: 3	Total Berths: 5
Sleeps: 6	Total Heads: 2
Crew Cabin: 1	Crew Berths: 2
Crew Sleeps: 2	Crew Heads: 1

Hull and Deck Information

Hull Material: Mahogany	Deck Material: Teak
Hull Color: White	Hull Finish: Stainless Steel

Engine Information

Engines: 2	Manufacturer: Detroit Diesel
Model: 8V71N	Engine Type: Inboard
Fuel Type: Diesel	

DETAILED INFORMATION

Vessel Walkthrough

Owner's stateroom aft with twin lower outboard berths with dresser in between. Full wardrobe to port, head and shower to starboard. Moving forward, guest stateroom to starboard with queen size berth, wardrobe, bureau and adequate storage. Guest stateroom/day Head to port in the passageway with separate stall shower.

Moving up to main Saloon which is paneled in American Chestnut. There is a drop leaf sideboard/dining table to accommodate 6 in comfort with built in folding chair storage underneath. Galley is forward and below to starboard with a full complement of equipment. The dinette is directly opposite the Galley on the port side. Forward of the Galley are crews quarters for 2 in upper and lower berths on the portside with head in the forepeak and stall shower to starboard. Adequate hanging and storage space in this area. Engine room is accessible from the Galley and aft companionway stairway, and also through full double hatches access in the main salon sole.

Main deck – has mid-ships helm station with accompanying electronics etc. Aft deck has comfortable seating and the Flybridge is accessible via the companionway ladder on the port side of the after deck.

Cockpit is accessible down stairs at aft of flush deck.

Galley

- New Force 10 electric stove/oven
- GE refrigerator
- Stainless Steel counter top
- Overhead ventilation
- Single stainless steel sink
- New Faucets and associated plumbing

Electrical System

- Wiring has been updated and boat converted from 32V to 12V
- New 12.5kw Phaser generator installed 2007
- New Garmin 2210 GPS and transducer
- New Garmin GSD 21 blackbox Sounder Module
- New Icom M502 VHF Transceiver
- New Icom HM-157B/SW Comandmic II
- 8 New 8D batteries installed and divided into two banks: Inverter Bank – 2 House &

Engine Start Bank 6 (1 House, 2 for each V871, 1 for phaser generator)

- All new battery cables installed
- New rotary transfer switches for all batteries
- New Charles 30A charger installed for each bank of batteries and all associated wiring
- New dedicated Deep Cycle gel-cell battery installed forward for windlass and crew head
- Guest 6 amp charger installed for windlass battery and all associated wiring is brand new
- New wiring for stereo speakers
- Newmar 1800 Watt inverter
- 3 Marine Air compressors installed in 2000 but not activated until 2009. Boat is totally air conditioned.

Engines

- Twin V8-71 Detroit Diesel – 270 hp each
- Rebuilt - Currently 867 estimated hours

Mechanical Equipment

- Fresh water tanks replaced with new stainless steel
- New Shurflo diaphragm pump, 3.8 GPM, 45 PSI
- Raritan hot water heater with heat exchanger element – 110V
- New 2 gal Flotec expansion tank added for fresh water pump
- Fuel tanks replaced with new aluminum tanks
- All new Aeroquip fuel lines installed
- Steering converted from chain cable to hydraulic
- New 1275V Capilano helms by Teleflex
- New Aeroquip hydraulic steering hose
- 3 Raritan Sea-Era heads
- New 35 gallon holding tank and all new sanitation hose and y-valves
- 12V Sealand Mudsucker pump-out pump
- New 12V Ideal windlass motor installed
- Automatic Discharge Fireboy fire extinguisher (with manual deployment as well)

Features

- All exterior varnished stripped and built up with Epiphanes Wood Finish Gloss
- Exterior decks (including wheelhouse) coated with Cetol Marine Gloss
- All interior varnish stripped and built up with Interlux Goldspar Satio (60)
- All interior paint stripped and built up with Interlux Premium Yacht Enamel – White for overhead and Semi-gloss white for all walls and cabinets
- All Teak and Holly floors stripped and built up with HMG Acrythane clear system

- All hardware removed and polished or re-chromed
- Hull painted with Awlgrip Cloud White – 2 coats primer – 2 topcoats
- All hull hardware removed, polished and reinstalled

Flybridge

The Flybridge, with full helm, was added by Trumpy a couple of years after the boat was originally built. There is custom teak bench seating on the port and starboard sides.

Navigation

- Garmin 2210 GPS and transducer (2008)
- Garmin GSD 21 blackbox Sounder Module (2008)
- Icom M502 VHF Transceiver (2008)
- Icom HM-157B/SW Comandmic II (2008)

Hull

Double mahogany plank over oak frames.

Cockpit

ATLAS has a cockpit. A very rare feature for a Trumpy.

Remarks

A magnificently restored and maintained Trumpy by a knowledgeable and loving owner who has returned her to original or superior condition. Her interior has been totally redone in both cosmetics and decorating. Her engine room has been detailed, electrical system updated, aids to navigation have been replaced or updated. Exterior teak bright work is beyond reproach. All exterior canvas covers, Bimini top etc. have been replaced. This boat has been totally restored and is ready for immediate usage. This is a rare find for the true Trumpy connoisseur. Atlas won "Best In Show" at the 2007 Ocean Reef Club Vintage weekend, a true testament that she is in "Palm Beach Condition."

Exclusions

Owner's personal belongings.

Disclaimer

The Company offers the details of this vessel or yacht in good faith but cannot guarantee or warrant the accuracy of this information nor warrant the condition of the vessel. A buyer should instruct his representatives, agents, or his surveyors, to investigate such details as the buyer desires validated. This vessel or yacht is offered subject to prior sale, price change, or withdrawal without notice.

PHOTOS

Cockpit



Lower Helm Pilothouse



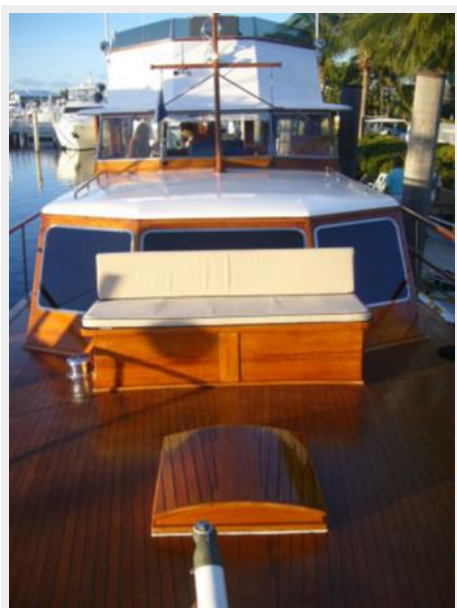
Flybridge Helm



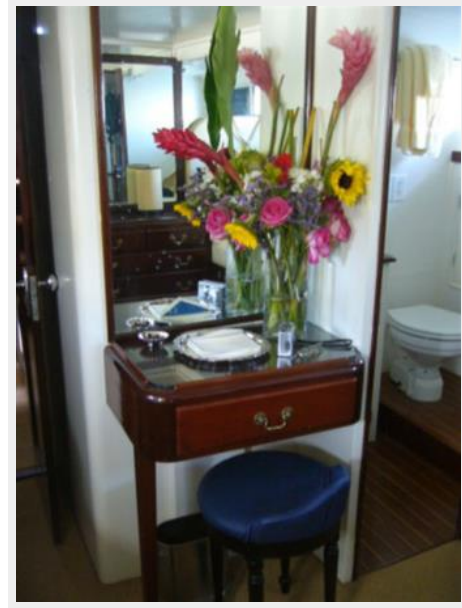
Lower Helm Navigation and Instruments

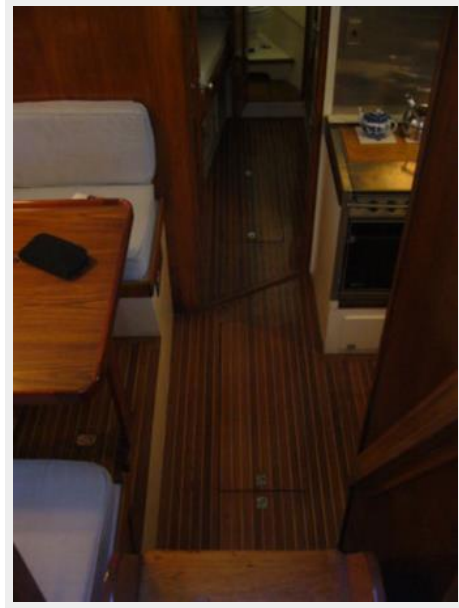


View of Foredeck from Flybridge**Portside seating in Flybridge****Foredeck****Flybridge Helm to starboard**

Foredeck Seating**Flushdeck aft starboard L-Settee****Wet Bar forward in Flushdeck****Saloon forward****Saloon aft****Saloon to port**

Dinette on portside opposite Galley**VIP Guest Stateroom****MSR port single berth****Master Stateroom Bureau**

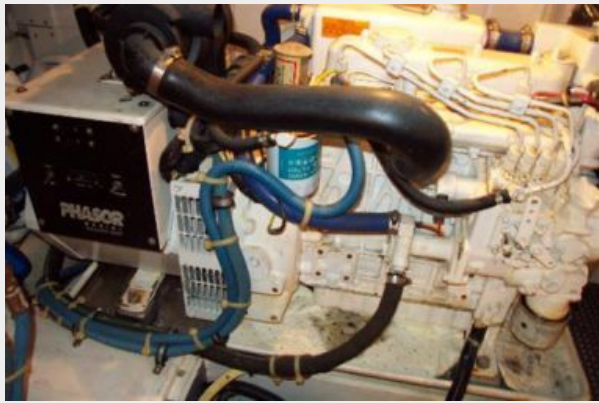
MSR Ensuite Head**MSR Vanity Desk****VIP Guest Stateroom****Nightstand in VIP Guest Stateroom**

Dinette on port, opposite Galley**Galley/Dinette Passageway to Crew Qtrs****Passageway through Galley to Crew Qtrs****Galley**

Galley**Crew Quarters forward****Galley****Crew Head**

Crew Head with Sink**Master Stateroom with twin berths****MSR ensuite Head****MSR Ensuite Shower**

Guest/Day Head**Guest Shower****Engine Room****Starboard Engine****Port Engine****Port Engine Room**

Genset**Port Engine Saloon Hatch****Flushdeck Seating to starboard****Flushdeck to portside****Flybridge seating****Port, Underway**

Stern Profile, Underway**Port Profile, Underway****Fore Port Profile, Underway****Port, Underway****Bow Profile, Underway****Port Bow Profile, Underway**

CONTACTS

Andrey Shestakov, leading yacht broker of the sales department of Shestakov Yacht Sales Inc. Shestakov Yacht Sales Inc., the official representative of the Miami/Fort Lauderdale FL headquarters.

Contact details

Email:
andrey@shestakovyachtsales.com

Web: shestakovyachtsales.com/en/

Telephones

USA: **+1(954)274-4435**

Office hours

Monday – Saturday: **9:00 - 21:00 EDT**

Sunday: **closed**

Address



Harbour Towne Marina, 850 NE 3rd St,
STE 213, Dania, FL 33004