

ATLAS — TRUMPY



Судостроитель: TRUMPY

Год постройки: 1960

Модель: Моторная яхта

Цена: ЦЕНА ЯХТЫ ПО ЗАПРОСУ

Местонахождение: United States

Длина общая: 57' 0" (17.37m)

Ширина: 14' 2" (4.32m)

Мин. осадка: 4' 0" (1.22m)

Купить **ATLAS — TRUMPY** а также выбрать подходящую вам яхту из нашего каталога яхт вам поможет опытный яхтенный брокер Андрей Шестаков. На сегодняшний день компания **Shestakov Yacht Sales Inc.** имеет большое количество яхт в собственном списке продаж, а также тесно сотрудничает со всеми крупными яхтенными производителями по всему миру.

Для того чтобы купить яхту **ATLAS — TRUMPY** а также проконсультироваться по любому вопросу связанному с покупкой, продажей, чартером яхт позвоните по телефону **+7(918)465-66-44**.

ОГЛАВЛЕНИЕ

| | |
|---------------------------------------|----|
| ОГЛАВЛЕНИЕ | 2 |
| ХАРАКТЕРИСТИКИ | 5 |
| Обзор | 5 |
| Основная информация | 5 |
| Размеры | 5 |
| Скорость, вместимость и масса | 5 |
| Размещение | 6 |
| Корпус и палуба | 6 |
| Информация о двигателе | 6 |
| ПОДРОБНОЕ ОПИСАНИЕ | 7 |
| Vessel Walkthrough | 7 |
| Galley | 7 |
| Electrical System | 7 |
| Engines | 8 |
| Mechanical Equipment | 8 |
| Features | 8 |
| Flybridge | 9 |
| Navigation | 9 |
| Hull | 9 |
| Cockpit | 9 |
| Remarks | 9 |
| Исключения | 9 |
| Отказ от ответственности | 10 |
| ФОТОГРАФИИ | 11 |
| Cockpit | 11 |
| Lower Helm Pilothouse | 11 |
| Flybridge Helm | 11 |
| Lower Helm Navigation and Instruments | 11 |

| | |
|--|----|
| View of Foredeck from Flybridge | 12 |
| Portside seating in Flybridge | 12 |
| Foredeck | 12 |
| Flybridge Helm to starboard | 12 |
| Foredeck Seating | 13 |
| Flushdeck aft starboard L-Settee | 13 |
| Wet Bar forward in Flushdeck | 13 |
| Saloon forward | 13 |
| Saloon aft | 13 |
| Saloon to port | 13 |
| Dinette on portside opposite Galley | 14 |
| VIP Guest Stateroom | 14 |
| MSR port single berth | 14 |
| Master Stateroom Bureau | 14 |
| MSR Ensuite Head | 15 |
| MSR Vanity Desk | 15 |
| VIP Guest Stateroom | 15 |
| Nightstand in VIP Guest Stateroom | 15 |
| Dinette on port, opposite Galley | 16 |
| Galley/Dinette Passageway to Crew Qtrs | 16 |
| Passageway through Galley to Crew Qtrs | 16 |
| Galley | 16 |
| Crew Quarters forward | 17 |
| Galley | 17 |
| Galley | 17 |
| Crew Head | 17 |
| Crew Head with Sink | 18 |
| Master Stateroom with twin berths | 18 |
| MSR ensuite Head | 18 |

| | |
|--------------------------------|----|
| MSR Ensuite Shower | 18 |
| Guest/Day Head | 19 |
| Guest Shower | 19 |
| Engine Room | 19 |
| Starboard Engine | 19 |
| Port Engine | 19 |
| Port Engine Room | 19 |
| Genset | 20 |
| Port Engine Saloon Hatch | 20 |
| Flushdeck Seating to starboard | 20 |
| Flushdeck to portside | 20 |
| Port, Underway | 20 |
| Flybridge seating | 20 |
| Stern Profile, Underway | 21 |
| Port Profile, Underway | 21 |
| Fore Port Profile, Underway | 21 |
| Port, Underway | 21 |
| Bow Profile, Underway | 21 |
| Port Bow Profile, Underway | 21 |
| КОНТАКТЫ | 22 |
| Контактная информация | 22 |
| Телефоны | 22 |
| Время работы | 22 |
| Адрес | 22 |

ХАРАКТЕРИСТИКИ

Обзор

A magnificently restored and maintained Trumpy by a knowledgeable and loving owner who has returned her to original or superior condition. Her interior has been totally redone in both cosmetics and decorating. Her engine room has been detailed, electrical system updated, aids to navigation have been replaced or updated. Exterior teak bright been replaced. This boat has been totally restored and is ready for immediate usage. This is a rare find for the true Trumpy connoisseur. Atlas won "Best In Show" at the 2007 Ocean Reef Club Vintage weekend, a true testament that she is in "Palm Beach Condition."

Основная информация

| | |
|------------------------------------|------------------------------|
| Тип судна: Моторная яхта | Модельный год: 1960 |
| Год постройки: 1960 | Страна: United States |
| Открытая палуба мостика: Да | Кубрик: Да |

Размеры

| | |
|-------------------------------------|---|
| Длина общая: 57' 0" (17.37m) | Длина по ватерлинии: 53' 8" (16.36m) |
| Ширина: 14' 2" (4.32m) | Мин. осадка: 4' 0" (1.22m) |

Скорость, вместимость и масса

| | |
|---|--------------------------------------|
| Чистый вес: 27 Pounds | Вместимость воды: 170 Gallons |
| Объем топливного бака: 450 Gallons | |

Размещение

Всего кают: 3

Всего коек: 5

Спальные места: 6

Всего ком. состава: 2

Каюты экипажа: 1

Койки экипажа: 2

Спальных мест экипажа: 2

Комм. состав экипажа: 1

Корпус и палуба

Материал корпуса: Mahogany

Материал палубы: Teak

Цвет корпуса: White

Отделка корпуса: Stainless Steel

Информация о двигателе

Двигатели: 2

Производитель: Detroit Diesel

Модель: 8V71N

Тип двигателя: Inboard

Тип топлива: Diesel

ПОДРОБНОЕ ОПИСАНИЕ

Vessel Walkthrough

Owner's stateroom aft with twin lower outboard berths with dresser in between. Full wardrobe to port, head and shower to starboard. Moving forward, guest stateroom to starboard with queen size berth, wardrobe, bureau and adequate storage. Guest stateroom/day Head to port in the passageway with separate stall shower.

Moving up to main Saloon which is paneled in American Chestnut. There is a drop leaf sideboard/dining table to accommodate 6 in comfort with built in folding chair storage underneath. Galley is forward and below to starboard with a full complement of equipment. The dinette is directly opposite the Galley on the port side. Forward of the Galley are crews quarters for 2 in upper and lower berths on the portside with head in the forepeak and stall shower to starboard. Adequate hanging and storage space in this area. Engine room is accessible from the Galley and aft companionway stairway, and also through full double hatches access in the main salon sole.

Main deck – has mid-ships helm station with accompanying electronics etc. Aft deck has comfortable seating and the Flybridge is accessible via the companionway ladder on the port side of the after deck.

Cockpit is accessible down stairs at aft of flush deck.

Galley

- New Force 10 electric stove/oven
- GE refrigerator
- Stainless Steel counter top
- Overhead ventilation
- Single stainless steel sink
- New Faucets and associated plumbing

Electrical System

- Wiring has been updated and boat converted from 32V to 12V
- New 12.5kw Phaser generator installed 2007
- New Garmin 2210 GPS and transducer
- New Garmin GSD 21 blackbox Sounder Module
- New Icom M502 VHF Transceiver
- New Icom HM-157B/SW Comandmic II
- 8 New 8D batteries installed and divided into two banks: Inverter Bank – 2 House &

Engine Start Bank 6 (1 House, 2 for each V871, 1 for phaser generator)

- All new battery cables installed
- New rotary transfer switches for all batteries
- New Charles 30A charger installed for each bank of batteries and all associated wiring
- New dedicated Deep Cycle gel-cell battery installed forward for windlass and crew head
- Guest 6 amp charger installed for windlass battery and all associated wiring is brand new
- New wiring for stereo speakers
- Newmar 1800 Watt inverter
- 3 Marine Air compressors installed in 2000 but not activated until 2009. Boat is totally air conditioned.

Engines

- Twin V8-71 Detroit Diesel – 270 hp each
- Rebuilt - Currently 867 estimated hours

Mechanical Equipment

- Fresh water tanks replaced with new stainless steel
- New Shurflo diaphragm pump, 3.8 GPM, 45 PSI
- Raritan hot water heater with heat exchanger element – 110V
- New 2 gal Flotec expansion tank added for fresh water pump
- Fuel tanks replaced with new aluminum tanks
- All new Aeroquip fuel lines installed
- Steering converted from chain cable to hydraulic
- New 1275V Capilano helms by Teleflex
- New Aeroquip hydraulic steering hose
- 3 Raritan Sea-Era heads
- New 35 gallon holding tank and all new sanitation hose and y-valves
- 12V Sealand Mudsucker pump-out pump
- New 12V Ideal windlass motor installed
- Automatic Discharge Fireboy fire extinguisher (with manual deployment as well)

Features

- All exterior varnished stripped and built up with Epiphanes Wood Finish Gloss
- Exterior decks (including wheelhouse) coated with Cetol Marine Gloss
- All interior varnish stripped and built up with Interlux Goldspar Satio (60)
- All interior paint stripped and built up with Interlux Premium Yacht Enamel – White for overhead and Semi-gloss white for all walls and cabinets
- All Teak and Holly floors stripped and built up with HMG Acrythane clear system

- All hardware removed and polished or re-chromed
- Hull painted with Awlgrip Cloud White – 2 coats primer – 2 topcoats
- All hull hardware removed, polished and reinstalled

Flybridge

The Flybridge, with full helm, was added by Trumpy a couple of years after the boat was originally built. There is custom teak bench seating on the port and starboard sides.

Navigation

- Garmin 2210 GPS and transducer (2008)
- Garmin GSD 21 blackbox Sounder Module (2008)
- Icom M502 VHF Transceiver (2008)
- Icom HM-157B/SW Comandmic II (2008)

Hull

Double mahogany plank over oak frames.

Cockpit

ATLAS has a cockpit. A very rare feature for a Trumpy.

Remarks

A magnificently restored and maintained Trumpy by a knowledgeable and loving owner who has returned her to original or superior condition. Her interior has been totally redone in both cosmetics and decorating. Her engine room has been detailed, electrical system updated, aids to navigation have been replaced or updated. Exterior teak bright work is beyond reproach. All exterior canvas covers, Bimini top etc. have been replaced. This boat has been totally restored and is ready for immediate usage. This is a rare find for the true Trumpy connoisseur. Atlas won "Best In Show" at the 2007 Ocean Reef Club Vintage weekend, a true testament that she is in "Palm Beach Condition."

Исключения

При продаже яхты исключаются личные вещи владельца.

Отказ от ответственности

Компания предоставляет описание судна или яхты добросовестно, но не может гарантировать точность этой информации, а также не ручается за техническое состояние. Покупатель должен проинструктировать своих агентов или оценщиков исследовать представленную информацию более подробно, по собственному желанию. Продажа судна или яхты, изменение цены или снятие с продажи будет происходить без предварительного уведомления.

ФОТОГРАФИИ

Сокпит



Lower Helm Pilothouse



Flybridge Helm



Lower Helm Navigation and Instruments



View of Foredeck from Flybridge



Portside seating in Flybridge



Foredeck



Flybridge Helm to starboard



Foredeck Seating



Flushdeck aft starboard L-Settee



Wet Bar forward in Flushdeck



Saloon forward



Saloon aft



Saloon to port



Dinette on portside opposite Galley



VIP Guest Stateroom



MSR port single berth



Master Stateroom Bureau



MSR Ensuite Head



MSR Vanity Desk



VIP Guest Stateroom



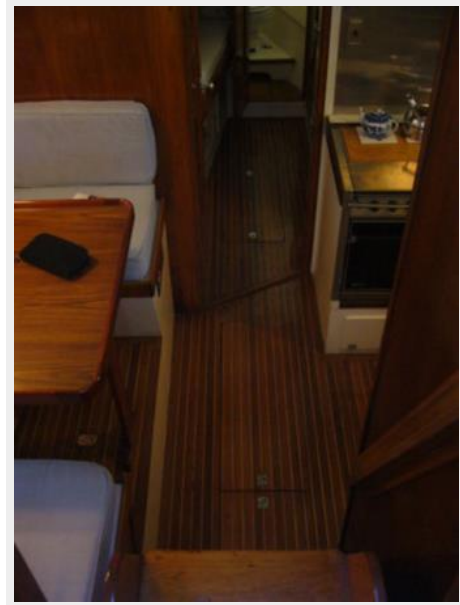
Nightstand in VIP Guest Stateroom



Dinette on port, opposite Galley



Galley/Dinette Passageway to Crew Qtrs



Passageway through Galley to Crew Qtrs

Galley



Galley



Crew Quarters forward



Galley



Crew Head



Crew Head with Sink



Master Stateroom with twin berths



MSR ensuite Head



MSR Ensuite Shower



Guest/Day Head



Guest Shower



Engine Room



Starboard Engine



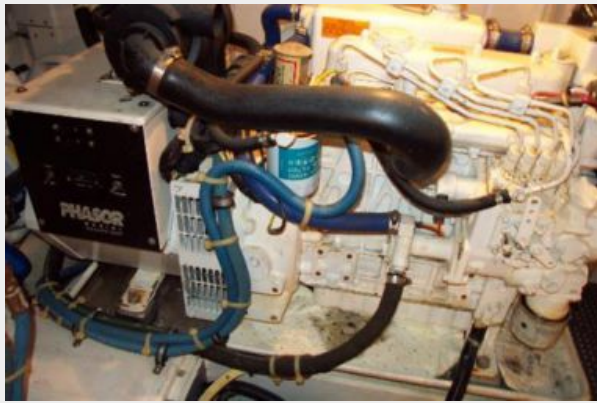
Port Engine



Port Engine Room



Genset



Port Engine Saloon Hatch



Flushdeck Seating to starboard



Flushdeck to portside



Flybridge seating



Port, Underway



Stern Profile, Underway



Port Profile, Underway



Fore Port Profile, Underway



Port, Underway



Bow Profile, Underway



Port Bow Profile, Underway



КОНТАКТЫ

Андрей Шестаков (Andrey Shestakov) – ведущий яхтенный брокер отдела продаж яхт и судов компании Shestakov Yacht Sales Inc. Официальный представитель Shestakov Yacht Sales Inc. для русскоговорящих клиентов в центральном офисе компании в Майами/Форт Лодердейл/Флорида/США.

Контактная информация

Email: andrey@shestakovyachtsales.com

Web: shestakovyachtsales.com

Телефоны

Краснодарский край: **+7(918)465-66-44**

США, Майами, Флорида: **+1(954)274-4435**

Время работы

Понедельник – Суббота: **9:00 - 21:00**
EDT

Воскресенье: **Закрито**

Адрес



Harbour Towne Marina, 850 NE 3rd St,
STE 213, Dania, FL 33004