

118' CANTIERI DI PISA — CANTIERI DI PISA



Builder: CANTIERI DI PISA

Year Built: 1984

Model: Motor Yacht

Price: PRICE ON APPLICATION

Location: United Arab Emirates

LOA: 118' 2" (36.00m)

Beam: 23' 6" (7.14m)

Min Draft: 7' 0" (2.14m)

Cruise Speed: 22 Kts. (25 MPH)

Max Speed: 26 Kts. (30 MPH)

Our experienced yacht broker, Andrey Shestakov, will help you choose and buy a yacht that best suits your needs 118' Cantieri Di Pisa — CANTIERI DI PISA from our catalogue. Presently, at Shestakov Yacht Sales Inc., we have a wide variety of yachts available on our sale's list. We also work in close contact with all the big yacht manufacturers from all over the world.

If you would like to buy a yacht 118' Cantieri Di Pisa — CANTIERI DI PISA or would like help answering any questions concerning purchasing, selling or chartering a yacht, please call +1(954)274-4435

TABLE OF CONTENTS

TABLE OF CONTENTS	2
SPECIFICATIONS	5
Basic Information	5
Dimensions	5
Speed, Capacities and Weight	5
Accommodations	5
Hull and Deck Information	5
Engine Information	6
DETAILED INFORMATION	7
Description	7
Accommodations	7
Salon	7
Dining	7
Galley	7
Crew Quarters	8
Pilothouse	8
Flybridge	8
Deck Equipment	8
Engine /Mechanical Equipment	8
Exclusions	9
Disclaimer	9
PHOTOS	10
Exterior	10
Exterior	10
Exterior	10
Exterior	10
Exterior	11
Exterior	11

Flybridge	11
Flybridge	11
Flybridge	11
Swim Platform	11
Bridge	12
Bridge	12
Bridge	12
Top Deck	12
Exterior	12
Aft Deck	12
Salon	13
Salon	13
Dining	13
Crockery	13
Galley	13
Galley	13
Master	14
Master	14
Master	14
Master Bath	14
Master Bath	14
Master Bath	14
Guest Stateroom	15
Guest Stateroom	15
Guest Bath	15
Guest Bath	15
Guest Bath	16
Guest Bath	16
Guest Room Corridor	16

Crew Mess	16
Genset	17
Electrical Panel	17
Fusebox	17
Genset	17
Engine	18
Engine	18
Engine	18
Engine	18
Engine Room	19
Logo	19
CONTACTS	20
Contact details	20
Telephones	20
Office hours	20
Address	20

SPECIFICATIONS

Basic Information

Category: Motor Yacht

Sub Category: Raised Pilothouse

Model Year: 1984

Year Built: 1984

Country: United Arab Emirates

Dimensions

LOA: 118' 2" (36.00m)

Beam: 23' 6" (7.14m)

Min Draft: 7' 0" (2.14m)

Speed, Capacities and Weight

Cruise Speed: 22 Kts. (25 MPH)

Cruise Speed Range: 450

Max Speed: 26 Kts. (30 MPH)

Gross Tonnage: 212 Pounds

Water Capacity: 951.0193872 Gallons

Fuel Capacity: 5283.44104 Gallons

Accommodations

Total Cabins: 5

Sleeps: 10

Total Heads: 6

Captain Cabin: True

Crew Cabin: 3

Crew Berths: 1

Crew Sleeps: 7

Hull and Deck Information

Hull Material: Fiberglass Over Wood

Engine Information

Engines: 3

Manufacturer: MTU

Fuel Type: Diesel

DETAILED INFORMATION

Description

"A MUST SEE BEAUTIFUL YACHT" This yacht is exquisitely furnished and trimmed with lots of pure silks and marble. Major refit in 2004. The waterline has been extended 5 feet by installing swim platform. New MTU engines installed, 3 x 1500 HP. Hydraulic Flybridge arc system installed. New Onan Generator and new water tanks. Last dry dock was March 2007, new anti-fouling, bow thruster prop renewed, polish of props and new zincs.

Accommodations

- 5 Staterooms (master, 4 twin guests)
- 6 Heads
- 3 Crew Cabins

Salon

- 1 Unit - Harman Kardon Amplifier
- 1 Unit - Gyro Trac ADCU (Automatic Digital Control Unit)
- 1 Unit - VHS Player (Multi System)
- 1 Unit - DVD Player
- 1 Unit - Television Channel Receiver
- 1 Unit - Fridge with ice maker
- 1 Unit - Television set Flat Screen

Dining

- Dining Table for 10 Guests
- 12 Crockery Lockers

Galley

- 2 Units - Fridge Large
- 1 Unit - Microwave
- 1 Unit - Oven
- 1 Unit - Ice Maker
- 1 Unit - Gas Stove (5 Burners)
- 1 Unit - Exhaust Fan

Crew Quarters

- 1 Captains Cabin with shower room
- 1 Chief Engineers Cabin (2 beds)
- 1 Crew Cabin (4 beds)
- 1 Crew head with shower room

Pilothouse

- 1 Unit - Navtext Receiver
- 1 Unit - Raytheon Night Vision
- 1 Unit - Camera Monitor for (Engine room, Port and Starboard side, and Aft.
- 2 Unit - Furuno Chart Plotter
- 1 Unit - Furuno GPS WAAS Navigator
- 1 Unit - VHF Radio

Flybridge

- 1 Unit - Furuno Chart Plotter
- 1 Unit - Furuno VHF Radio
- 1 Unit - DVD Player with AM/FM radio
- 2 - Dining Tables
- 1 - Wash Basin

Deck Equipment

Boat Deck: 1 Davit for tender, 800 kg. Jib extended capacity (OPACMARE) 1 Tender -15 foot Boston Whaler with 60 H.P. Mercury Outboard Motor

- Forward;
- 2 - Horizontal Anchor Winch, with 2 windlass, horizontal and vertical
- Aft:
- Port and Starboard windlass with foot switch

Engine /Mechanical Equipment

New engines installed in 2004, 3x 1500 HP MTU.

- Genset #1 (1984)Onan 70 KVA @ 1175 Hours
- Genset #2 (2004)Onan 70 KVA @ 633 Hours
- Watermaker Cap: 3600 Liters at 600 Liter/hr Idomar
- AC System: 320,000 BTU Marine Air System
- Range: 450 NM @ 22 Knots

Exclusions

Owner's personal belongings.

Disclaimer

The Company offers the details of this vessel or yacht in good faith but cannot guarantee or warrant the accuracy of this information nor warrant the condition of the vessel. A buyer should instruct his representatives, agents, or his surveyors, to investigate such details as the buyer desires validated. This vessel or yacht is offered subject to prior sale, price change, or withdrawal without notice.

PHOTOS

Exterior



Exterior



Exterior



Exterior



Exterior



Exterior



Flybridge



Flybridge



Flybridge



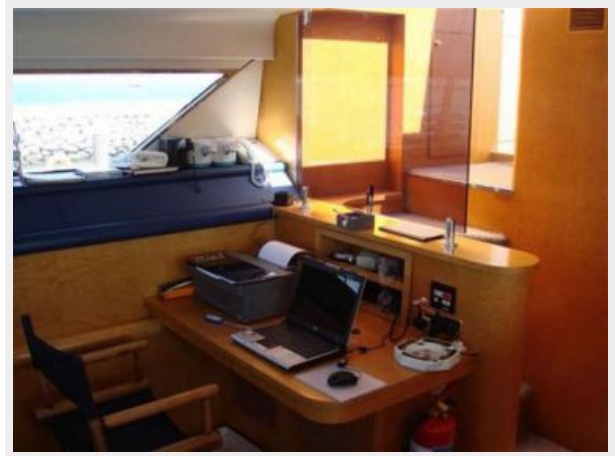
Swim Platform



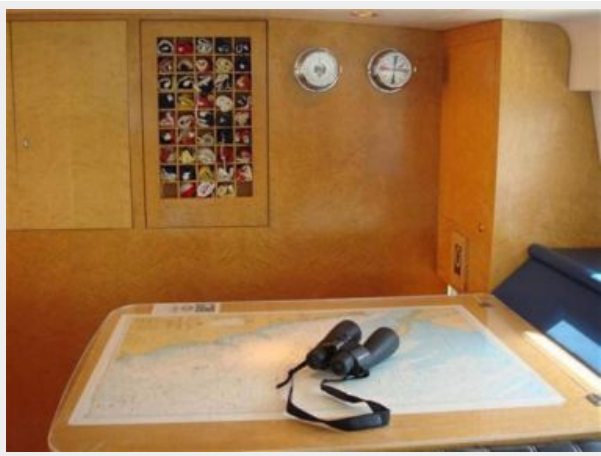
Bridge



Bridge



Bridge



Top Deck



Exterior



Aft Deck



Salon



Salon



Dining



Crockery



Galley



Galley



Master



Master



Master



Master Bath



Master Bath



Master Bath



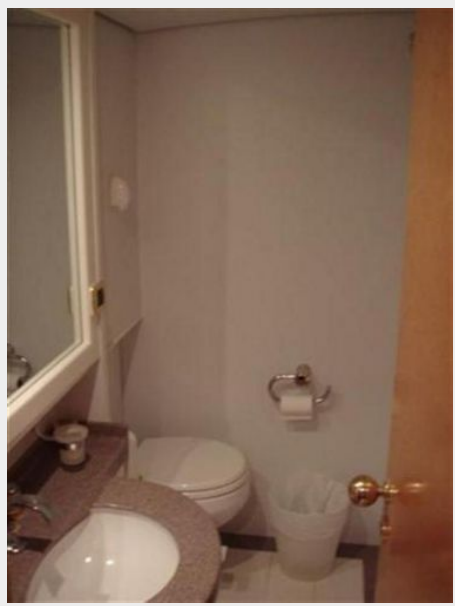
Guest Stateroom



Guest Stateroom



Guest Bath



Guest Bath



Guest Bath



Guest Bath



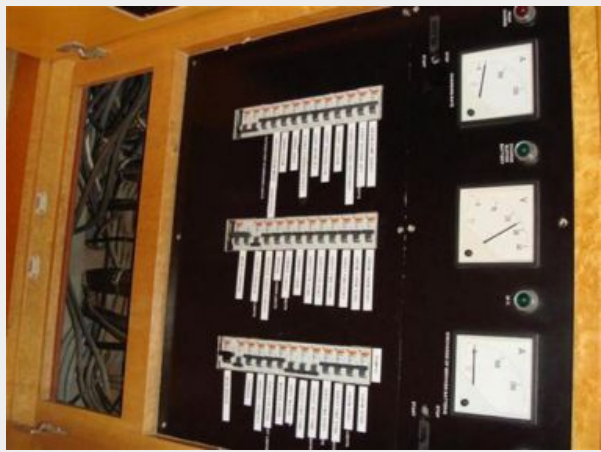
Guest Room Corridor



Crew Mess



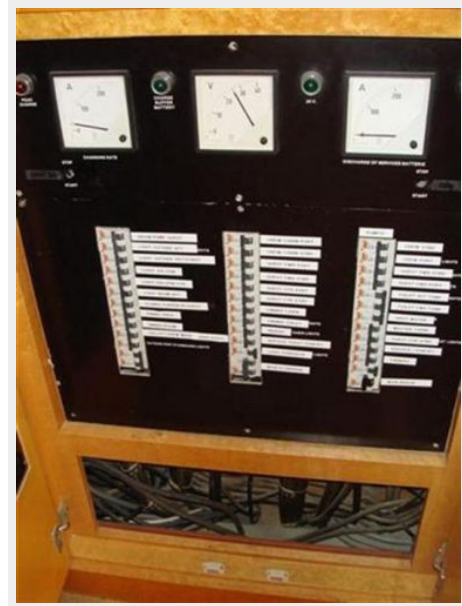
Electrical Panel



Genset



Fusebox



Genset



Engine



Engine



Engine



Engine



Engine Room



Logo



CONTACTS

Andrey Shestakov, leading yacht broker of the sales department of Shestakov Yacht Sales Inc. Shestakov Yacht Sales Inc., the official representative of the Miami/Fort Lauderdale FL headquarters.

Contact details

Email: andrey@shestakovyachtsales.com

Web: shestakovyachtsales.com/en/

Telephones

USA: +1(954)274-4435

Office hours

Monday – Saturday: **9:00 - 21:00** EDT

Sunday: **closed**

Address



Harbour Towne Marina, 850 NE 3rd St,
STE 213, Dania, FL 33004