

128' LUXURY CANAL BARGE — STRASBOURG



Builder: STRASBOURG

Year Built: 1950

Model: Motor Yacht

Price: PRICE ON APPLICATION

Location: France

LOA: 128' 0" (39.02m)

Beam: 16' 8" (5.05m)

Max Draft: 2' 7" (0.76m)

Cruise Speed: 7 Kts. (8 MPH)

Max Speed: 12 Kts. (14 MPH)

Our experienced yacht broker, Andrey Shestakov, will help you choose and buy a yacht that best suits your needs 128' Luxury Canal Barge — STRASBOURG from our catalogue. Presently, at Shestakov Yacht Sales Inc., we have a wide variety of yachts available on our sale's list. We also work in close contact with all the big yacht manufacturers from all over the world.

If you would like to buy a yacht 128' Luxury Canal Barge — STRASBOURG or would like help answering any questions concerning purchasing, selling or chartering a yacht, please call +1(954)274-4435

TABLE OF CONTENTS

TABLE OF CONTENTS	2
SPECIFICATIONS	4
Basic Information	4
Dimensions	4
Speed, Capacities and Weight	4
Accommodations	5
Hull and Deck Information	5
Engine Information	5
DETAILED INFORMATION	6
General Comments	6
Accommodations	6
Hull	6
Safety and Fire Protection	7
Electrical System	7
Galley/Laundry	7
Exclusions	7
Disclaimer	8
PHOTOS	9
Passageway	9
Dining Room	9
Lounge	9
Master Cabin	9
Master Bath	10
Master Bath Details	10
Asian Stateroom	10
Asian Stateroom	10
Sunken Tub	11
CONTACTS	13

Contact details	13
Telephones	13
Office hours	13
Address	13

SPECIFICATIONS

Basic Information

Category: Motor Yacht

Sub Category: Liveaboard

Model Year: 1950

Year Built: 1950

Refit Year: 2007

Refit Type: Complete refit with private studio, three private ensuite cabins, dining/lounge area, suitable for private liveaboard or deluxe charter

Country: France

Dimensions

LOA: 128' 0" (39.02m)

LOD: 128' 0" (39.02m)

Beam: 16' 8" (5.05m)

Max Draft: 2' 7" (0.76m)

Clearance: 11' 7" (3.51m)

MFG Length: 128' 0" (39.02m)

Speed, Capacities and Weight

Cruise Speed: 7 Kts. (8 MPH)

Max Speed: 12 Kts. (14 MPH)

Max Speed RPM: 2200 Kts.

Displacement: 166000 Pounds

Water Capacity: 2113.376416 Gallons

Fuel Capacity: 528.344104 Gallons

Fuel Consumption: 4.755096936 Gallons

Accommodations

Total Cabins: 3

Total Berths: 6

Sleeps: 6

Total Heads: 4

Crew Cabin: 1

Crew Berths: 2

Crew Sleeps: 2

Crew Heads: 1

Hull and Deck Information

Hull Material: Steel

Deck Material: Wood

Exterior Designer: Forge of Strasbourg

Engine Information

Engines: 1

Manufacturer: Iveco

Engine Type: Inboard

Fuel Type: Diesel

DETAILED INFORMATION

General Comments

Huge price reduction! The Barge was built in 1950 as a Commercial Barge and completely renovated by the current owners as a Boat should be, resulting in a luxury barge that is suitable for living aboard in style. The interior consists of Three Cabins, each with En-Suite baths, a Lounge Room with dining area, galley, Self contained quarters in the bow which can be used as Crew Cabin or studio apartment, Terrace, Swimming Pool, 25mts by 5mts of Storage in The Hull. She provides full comfort with a 220 HP Marine Engine, 6kva Generator, Solar Energy, Solar Hot Water System, and Central Heating throughout. She has Classic Solid Timber Wooden Deck, and has four collision bulkheads. This unique Barge can be used for Luxury Living or Deluxe Charter, Certification for Navigation until 2015 which can be renewed every 10yrs by European law. **The owner is motivated. Huge price reduction makes this a great opportunity to obtain a luxury barge like no other.**

Accommodations

From the bow is a studio fully equipped with kitchenette, bathroom and bedroom which can also serve as crew quarters. This studio/crew cabin is accessed from deck, but a passage can be added from below decks in the future for further access. Next aft is a concrete pool, the patio is lined in mosaic glass tile. Following is the sun deck. Far aft is a terrace with dining table and helm. Enter from the terrace to the galley, follow forward to the lounge and dining room. There are three luxury cabins, each with ensuite bathroom, one of which has a sunken tub. Below decks offers a vast amount of storage space. Under the living area is room for storage with water tanks, washing machine and fridge. At the stern the engine room is separated by a collision bulkhead.

Hull

- Steel hull with reinforced bottom
- Classic solid timber wooden deck
- 4 x watertight bulkheads
- Concrete swimming pool
- Glass mosaic tile from India surrounding pool
- 5 x awnings
- Dining terrace on stern
- 2 x 300kg anchor w/ 60m chain
- Anchor windlass, manual

- Davits
- Deck washdown
- Fenders

Safety and Fire Protection

- Man overboard rig
- 8 x life jackets
- Fire extinguishers
- Smoke detectors

Electrical System

- 4 x batteries, 6V, 430Amps, new
- 24volts for generator, 1 year
- 4 x batteries for solar
- Inverter, 3000 watts
- Alternator, 600 watts
- Lister generator, 6kW
- Shore power cord and pigtail
- Central heating
- Solar energy, 3kVA. 24 Amps/p/h
- Separate solar hot water
- VHF

Galley/Laundry

- Refrigerator / freezer
- Propane 5 burner stove w/ oven, rotisserie and griller
- Dishwasher
- Stainless steel sink
- La Pierre de Benote countertop
- La Pierre de Tavel on sole

Exclusions

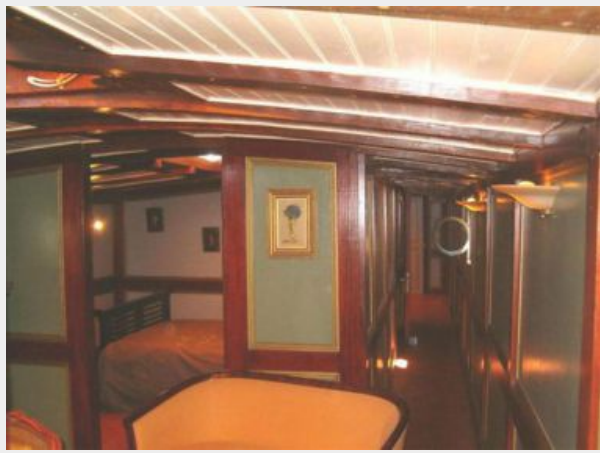
Owner's personal belongings.

Disclaimer

The Company offers the details of this vessel or yacht in good faith but cannot guarantee or warrant the accuracy of this information nor warrant the condition of the vessel. A buyer should instruct his representatives, agents, or his surveyors, to investigate such details as the buyer desires validated. This vessel or yacht is offered subject to prior sale, price change, or withdrawal without notice.

PHOTOS

Passageway



Dining Room



Lounge



Master Cabin



Master Bath



Master Bath Details



Asian Stateroom



Asian Stateroom



Sunken Tub





CONTACTS

Andrey Shestakov, leading yacht broker of the sales department of Shestakov Yacht Sales Inc. Shestakov Yacht Sales Inc., the official representative of the Miami/Fort Lauderdale FL headquarters.

Contact details

Email: andrey@shestakovyachtsales.com

Web: shestakovyachtsales.com/en/

Telephones

USA: +1(954)274-4435

Office hours

Monday – Saturday: **9:00 - 21:00** EDT

Sunday: **closed**

Address



Harbour Towne Marina, 850 NE 3rd St,
STE 213, Dania, FL 33004