

NATICA — HATTERAS



Судостроитель: HATTERAS

Год постройки: 1999

Модель: Моторная яхта

Цена: **ЦЕНА ЯХТЫ ПО ЗАПРОСУ**

Местонахождение: United States

Длина общая: 92' 0" (28.04m)

Ширина: 23' 0" (7.01m)

Мин. осадка: 6' 4" (1.93m)

Крейс. скорость: 10 Kts. (12 MPH)

Макс. скорость: 24 Kts. (28 MPH)

Купить **NATICA — HATTERAS** а также выбрать подходящую вам яхту из нашего каталога яхт вам поможет опытный яхтенный брокер Андрей Шестаков. На сегодняшний день компания **Shestakov Yacht Sales Inc.** имеет большое количество яхт в собственном списке продаж, а также тесно сотрудничает со всеми крупными яхтенными производителями по всему миру.

Для того чтобы купить яхту **NATICA — HATTERAS** а также проконсультироваться по любому вопросу связанному с покупкой, продажей, чартером яхт позвоните по телефону **+7(918)465-66-44**.

ОГЛАВЛЕНИЕ

ОГЛАВЛЕНИЕ	2
ХАРАКТЕРИСТИКИ	4
Обзор	4
Основная информация	4
Размеры	4
Скорость, вместимость и масса	4
Размещение	5
Корпус и палуба	5
Информация о двигателе	5
ПОДРОБНОЕ ОПИСАНИЕ	6
Accommodations	6
Salon	6
Galley	6
Powder Room	7
Pilothouse	7
Master Stateroom	7
VIP Stateroom	7
Guest Staterooms	7
Crew Quarters	7
Laundry	8
Electronics and Navigational Equipment	8
Deck Equipment	9
Flybridge	9
Engine/Mechanical Equipment	10
Safety And Fire Protection	10
Electrical System	11
Office Entertainment Electronics	11
Dining	11

Aft deck	12
Remarks	12
Исключения	13
Отказ от ответственности	13
ФОТОГРАФИИ	14
Port Guest Stateroom	16
single staircase=larger aft deck dining	18
Flybridge bar	18
Swim platform could be extended for fighting chair	18
Natica originally White Star	18
Complete new engines going into NATICA (Ex-White Star) 2000 Quoting then Captain Yawn "It was a fine job from Bradford Marine. Not one wire was cut".	20
КОНТАКТЫ	21
Контактная информация	21
Телефоны	21
Время работы	21
Адрес	21

ХАРАКТЕРИСТИКИ

Обзор

NATICA is one of the finest in the Hatteras elite series, with four great staterooms and three crew cabins. like the 100' elites, plus larger aft deck dining and a dining table in the galley with more convenient storage. 1300 hours TOTAL TIME SINCE NEW!!!! Probable transatlantic range confirmed 3/25/2012 trials

Основная информация

Тип судна: Моторная яхта	Модельный год: 1999
Год постройки: 1999	Страна: United States
Регистрационный номер:	Верх: Bimini Top
Открытая палуба мостика: Да	

Размеры

Длина общая: 92' 0" (28.04m)	Ширина: 23' 0" (7.01m)
Мин. осадка: 6' 4" (1.93m)	Длина привального бруса: 92' 0" (28.04m)

Скорость, вместимость и масса

Крейс. скорость: 10 Kts. (12 MPH)	Дальность на крейсерской скорости: 2028
Макс. скорость: 24 Kts. (28 MPH)	Водоизмещение: 250000 Pounds
Вместимость воды: 800 Gallons	Объем топливного бака: 4845 Gallons

Размещение

Всего кают: 4

Спальные места: 8

Всего ком. состава: 6

Каюта капитана: Да

Каюты экипажа: 3

Койки экипажа: 4

Спальных мест экипажа: 4

Комм. состав экипажа: 2

Корпус и палуба

Материал корпуса: Fiberglass

Комплектация корпуса: Semi-Displacement

Дизайнер корпуса: Hargrave

Информация о двигателе

Двигатели: 2

Производитель: Detroit Diesel/MTU

Модель: 16V2000

Тип двигателя: Inboard

Тип топлива: Diesel

ПОДРОБНОЕ ОПИСАНИЕ

Accommodations

NATICA is a four stateroom plus 4/5 crew "Elite Series" custom Hatteras motoryacht with a special high-end mahogany interior, walkaround side decks and shore power frequency convertor that makes her suitable for cruising anywhere in the world.

Salon

The walkaround side decks are cleverly configured to be very narrow on either side of the salon so the salon itself is much wider than most 92' yachts. To starboard is a granite recessed bar with upholstered barrel chairs. The bar also services the aft deck. Opposite the bar is a game table and four chairs. The main seating is a curved recessed sofa and two goose-down filled occasional chairs and ottomans. A large coffee table in front of the sofa has Hi-Lo feature and can double as a very elegant dining table. On the forward bulkhead is a 42" plasma screen TV which is concealed behind wood doors. Entrance doors to side decks are on both sides of the forward end of the salon.

Galley

Forward on the main deck is a large galley with granite counter tops and a dining table with six chairs. There is more storage with the table option than the standard banquet option- The list of appliances is extensive: drawer freezer, Halogen cook-top, satellite TV, etc. All china, stemware and silverware is built in. A true "country kitchen", with chef and diners in conversation range with eye contact.

- Samsung microwave oven
- Double door Sub-Zero refrigerator w/drawer freezers and dry storage
- KitchenAid trash compactor
- Full size KitchenAid convection/conventional oven
- KitchenAid 4-burner Halogen/Electric cooktop
- KitchenAid dishwasher
- KitchenAid garbage disposal
- Counter sunk double sink
- Chrome Grohe faucet
- Sony TV w/VCR & stereo sound
- DCS stainless steel hood w/overboard vent
- Custom earth tone granite counter tops w/full back wall

Powder Room

Walking aft from the galley on the starboard side is the access to the pilothouse which is raised five steps. On the opposite side near the entrance door is the powder room. This "day head" is larger than those found on most yachts under 100 feet!

Pilothouse

Accessed from the starboard passageway via five short steps is the pilothouse. The well equipped pilothouse has a large L-shaped settee and table. There is a large chart table to starboard and a second area to port with a stool. The pilothouse paneling is mahogany with an Amteako planked floor. Aft are five short steps to the flybridge.

Master Stateroom

The master stateroom is accessed from the port side forward in the main salon opposite the entry door from outside. The master is full beam with large escape hatch size port lights. Forward of the master are his and hers baths with marble shower with frosted glass and marble counter tops and floor. The master stateroom is paneled in mahogany and has a king size bed, two walk-in cedar-lined wardrobe closets, and an entertainment center w/ TV, video, DVD, CD, and VHS.

VIP Stateroom

Forward of the "in galley" dining area is the VIP stateroom with a private access stairway. There is a queen size bed w/closets and drawer storage in mahogany wood. The marble head is very spacious. A 17" Sony Vega flat screen TV was recently added.

Guest Staterooms

In the same foyer as the master stateroom and washer/drier are a twin guest stateroom to port and a queen bed guest stateroom to starboard. Both have mahogany joiner work, closets, drawer storage and ensuite heads. The queen bed stateroom has a Jacuzzi tub in the head. The twin bed stateroom could easily be converted to another queen bed stateroom.

Crew Quarters

The spacious crew quarters are entered from the swim platform. There is a double bed captain's cabin with ensuite head to starboard, a double cabin and a single cabin to port with another head on the starboard side just inside the transom door. All three crew cabins have TV and CD/stereo. There is a second emergency escape access to the aft deck.

Laundry

As you wind down the central stairway you arrive in a large foyer which is adorned with artwork that cleverly hides the laundry facilities and large storage area. The Kenmore HE2 stacked washer and dryer off the master stateroom foyer are about three years year old. There is another washer and drier in the crew quarters.

Electronics and Navigational Equipment

Pilothouse:

- Datamarine Multilink Data, speed/log/digital depth
- Detroit Diesel electronic controls & remote diagnostic system
- Emergency manual control overrides
- Northstar model #952X Loran/GPS
- Stephens Electronics model #SEA235 single side band radio
- NEC monitor with Nobletec chart program
- 2 ACR model #RCL100 remote control spotlights
- KVH Flux Gate compass
- Stephens Electronics model # SEA156 VHF radio
- Elbex color monitor model #ECM1490 with remote control touch pad. There are two cameras, one on the aft deck and one in the engine room. Both are fully articulated.
- FLIR "Mariner" thermal imaging system 35° fixed
- American bow thruster control
- Robertson model #AP9 Mark 3 automatic pilot
- Fuel tank gauges and fuel transfer pump controls
- Controls for 7 automatic bilge pumps
- Raymarine life tag system, Master & repeater unit (wheelhouse & aft deck) interfaced with Raymarine GPS plotter
- Furuno Navtex receiver NX-500
- Sharp monitor (Direct TV/cameras/night vision)
- Naiad stabilizer control with fin angle indicators
- Allen Bradley Datum Plus central alarm system
- IBM computer with keyboard
- Sirens boardwalk WIFI
- Furuno 96-mile radar

Flybridge:

- Detroit Diesel electronic controls & remote diagnostic system
- Icom IC M127 VHF w/hailer
- Furuno 72-mile radar
- Ritchie Powerdamp compass
- Northstar model #958 GPS plotter

- Raymarine E80 multifunction display w/lifetag MOB
- Datamarine link depth finder
- Datamarine link multi
- American bow thruster control
- Robertson model #AP9 Mark 3 automatic pilot
- Naiad stabilizer control
- FLIR mariner control (Thermal imaging)
- Sony 10-disc CD changer
- Sony AM/FM/CD player
- IPOD/MP3 line-in jacks

Wing Stations: Port and starboard on the flybridge are two wing stations with the following:

- Robertson model #FU91 jog lever
- Engine starts and stops
- Bow thruster controls
- Engine single lever clutch and throttle controls
- Port & starboard wing control stations with cover (clutch, throttle, start, stop, jog steering)

Deck Equipment

- Danforth anchor
- Maxwell electric windlass
- Bow pulpit with rails
- USCG safety package
- Fiberglass decks forward
- Teak deck aft
- Fresh & saltwater washdown system
- Aft deck curtains
- ACR dual spotlights with remote controls
- Windshield washer/wipers
- Foredeck seating
- PipeWelders Bimini top with eisenglass U-zips on three sides (\$48,000) for high speed cruising
- Pilothouse windows removed and resealed 2/2011

Flybridge

- Dual Gaggenau barbeque grills to starboard
- Under counter freezer
- 4-speaker stereo receiver

- SATFIND 406 EPRIB
- 2 Givens 6-man hydrostatically released life rafts
- MarQuipt 2500 lb 0 degree lift electric davit w/wireless remote control
- Forward facing bar with three stools
- Stidd raised helm seat and two companion seats with footrests - with new vinyl in 2015
- 18' Novurania 530 lb tender w/130 hp Yamaha, GPS, VHF & DDI and stereo (tender maybe launched and surveyed if Buyer wishes)
- (2) 1999 Yamaha GP 360 wave runners (not included in sale and will not be surveyed - gift to Buyer if he wishes)

Engine/Mechanical Equipment

- Twin 2001 Detroit 16V2000 diesels w/ 1400 original hours
- Two Cruisair 5 ton reverse-cycle air conditioning units (one new 2011, one new in 2015 + chilled water circulator pump new 2013, total A/C repair upgrading about \$50,000)
- American hydraulic bow thruster approx 58 hp - 16 ½" tunnel
- Engine synchronizers
- 1500 GPD watermaker
- Racor fuel filters & oil change system
- 5 automatic/manual bilge pumps
- Lube oil transfer system
- Naiad stabilizers (model 302)
- ESL automatic fire extinguishing system w/smoke detectors & manual engagements throughout
- Fixed Halon 1301 fire extinguishing system in engine room
- Hynautic steering

NATICA had her 16V2000 engines replaced by MTU in 2000 because of problems with the first engines in several yachts. The second set of engines have had no problems. Serial number are:
Port: 5362000633 Stb.: 5362000627

Safety And Fire Protection

- Approximately 25 U.S. Coast Guard approved PFDs
- Flare kit (out of date)
- Full set of required running lights
- 110-volt bilge pump 5-bilge manifold
- 7 Automatic bilge pumps
- 7 High water alarms
- Halon 1301 automatic/manual fire suppression system for engine room
- Remote fire alarm pulls
- Remote Halon activation in wheelhouse

- Emergency escapes from VIP cabin, crew area, and engine room
- Oversize portholes for escapes in master and guest accommodations
- 2 Givens 6-person canister life rafts with hydrostatic releases (note: out of date)
- Sat Find 406 EPIRB on hydrostatic release
- 2 Throw rings
- Approximately 20 handheld fire extinguishers (note: out of date)
- Smoke detectors throughout
- First-aid kit
- Central alarm panel
- Safety package in small boat
- Proper ship's whistle
- Excellent electronics
- Good ground tackle
- Raymarine Lifetag man overboard system

Electrical System

- 110 volt AC system
- 12/24 volt DC system
- 100 amp 3-phase AC power cable
- 14 batteries 1120 amp hours
- Battery parallel switch
- 80 amp battery charger
- 2 Onan 35 kW generators with 3700 and 3600 hours
- Atlas Power Converter (50 KVA) with two 100 amp shore cords on Glendinning powered retractors *Atlas can take 180-520 volts and 40-70 hertz input

Office Entertainment Electronics

- Zenith TV in salon
- Sony A/V control STR-AV370
- (10) Sony DSS TV receivers
- AIWA MX100 VCR
- Yamaha RXV557 audio receiver
- Sony DVP-N57014 CD/DVD player
- HP All-in-One fax/printer/scanner
- Linksys wireless router

Dining

There are four locations for dining:

Aft deck

Main saloon

Galley

Flybridge; bar and tables (there is a grill for cooking just aft)

Aft deck

Because NATICA has a single staircase to the swim platform, she has a larger "L" shaped aft deck dining table than the 100' elites. The aft deck can also be enclosed with Izenglass and air conditioned by the saloon. There is also ladder access to the boat deck and a service window from the main saloon bar.

Remarks

NATICA was built to higher standards than many of the Elite series Hatteras yachts. The high gloss mahogany interior is stunning. She is one of the few Hatteras yachts that has cruised successfully in both Europe and the USA.

NATICA is a state-of-the-art yacht in every respect capable of worldwide cruising due to her reliability, anchoring system, stabilizers and shore power converter. She has a very tasteful 4-stateroom interior. A solid (non-cored below the waterline) fiberglass hull gives a quality ride usually only associated with a much larger yacht. NATICA has been lovingly maintained by four caring owners and is in "ready to cruise" condition. She has been repainted and still looks good. Her pilothouse windows have been taken out and resealed and her side windows were professionally recaulked. Recently, stabilizer seals were replaced and the bottom and bootstripe repainted in 2014.

NATICA is a great value since she has a similar layout to the more expensive 100' Hatterases. Stated range for cruising speed computed as follows: 3/25/2012. NATICA run north and south in 2' seas, 2000 gal fuel 600 gal water aboard. Assumption: 10% or 485 gallon of total fuel (4845 gal) held in reserve and not used in calculations. Average consumption 2.15 gallons/nautical mile at 10 knots= 2028 Nautical mile theoretical range. At 9.5 knots theoretical range=2435 nautical miles. At 9 knots theoretical range is 2812 nautical miles/knots. This should be verified by buyer in different sea conditions. Rough seas on the nose will decrease range. Calm seas and following seas should increase range. Predictions are based on the MTU computer fuel

consumption readout and speeds by GPS. It is believed that fuel consumption for one generator is about of 1 gal/hour. This has NOT been verified and has not been computed in the range calculation. CONCLUSION: It appears, but it is not guaranteed, that NATICA has transatlantic range on her own bottom, but a competent captain still would add fuel tanks and bladders wherever possible and use those first, and start such a trip in fair weather. Running on one engine for greater range has not been studied. Buyer should confirm the theoretical observations with a marine surveyor, and do his own trials before attempting a long crossing.

Reported draft is to prop tips. Draft to keel is about 6" less so custom props could be fitted to raise draft to around 6', and possibly top end speed would be lost.

NATICA has a displacement of 250,000 lb (113,399 kg).

Исключения

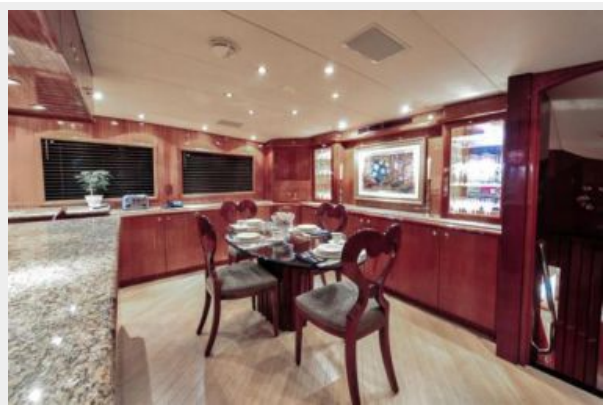
При продаже яхты исключаются личные вещи владельца.

Отказ от ответственности

Компания предоставляет описание судна или яхты добросовестно, но не может гарантировать точность этой информации, а также не ручается за техническое состояние. Покупатель должен проинструктировать своих агентов или оценщиков исследовать представленную информацию более подробно, по собственному желанию. Продажа судна или яхты, изменение цены или снятие с продажи будет происходить без предварительного уведомления.

ФОТОГРАФИИ







Port Guest Stateroom







single staircase=larger aft deck dining

Flybridge bar

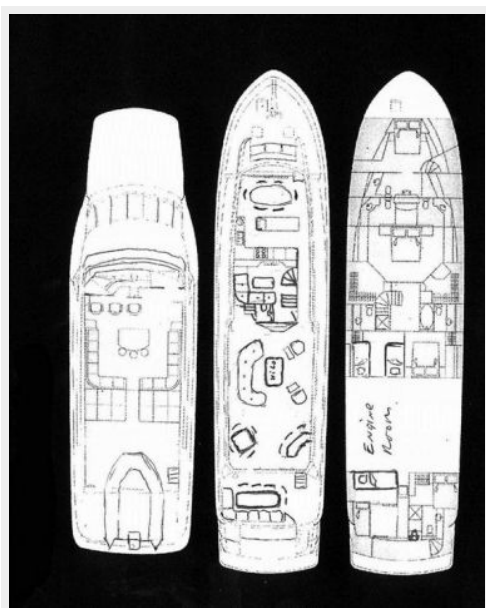


Swim platform could be extended for fighting chair



Natica originally White Star





Complete new engines going into NATICA (Ex-White Star) 2000 Quoting then Captain Yawn "It was a fine job from Bradford Marine. Not one wire was cut".



КОНТАКТЫ

Андрей Шестаков (Andrey Shestakov) – ведущий яхтенный брокер отдела продаж яхт и судов компании Shestakov Yacht Sales Inc. Официальный представитель Shestakov Yacht Sales Inc. для русскоговорящих клиентов в центральном офисе компании в Майами/Форт Лодердейл/Флорида/США.

Контактная информация

Email: andrey@shestakovyachtsales.com

Web: shestakovyachtsales.com

Телефоны

Краснодарский край: **+7(918)465-66-44**

США, Майами, Флорида: **+1(954)274-4435**

Время работы

Понедельник – Суббота: **9:00 - 21:00**
EDT

Воскресенье: **Закрето**

Адрес



Harbour Towne Marina, 850 NE 3rd St,
STE 213, Dania, FL 33004