

SHOWTIME — BROWARD



Судостроитель: BROWARD

Год постройки: 1989

Модель: Моторная яхта

Цена: **ЦЕНА ЯХТЫ ПО ЗАПРОСУ**

Местонахождение: United States

Длина общая: 125' 0" (38.10m)

Ширина: 24' 0" (7.32m)

Макс. осадка: 6' 0" (1.83m)

Крейс. скорость: 15 Kts. (17 MPH)

Макс. скорость: 17 Kts. (20 MPH)

Купить **SHOWTIME — BROWARD** а также выбрать подходящую вам яхту из нашего каталога яхт вам поможет опытный яхтенный брокер Андрей Шестаков. На сегодняшний день компания **Shestakov Yacht Sales Inc.** имеет большое количество яхт в собственном списке продаж, а также тесно сотрудничает со всеми крупными яхтенными производителями по всему миру.

Для того чтобы купить яхту **SHOWTIME — BROWARD** а также проконсультироваться по любому вопросу связанному с покупкой, продажей, чартером яхт позвоните по телефону **+7(918)465-66-44**.

ОГЛАВЛЕНИЕ

ОГЛАВЛЕНИЕ	2
ХАРАКТЕРИСТИКИ	3
Основная информация	3
Размеры	3
Скорость, вместимость и масса	3
Размещение	3
Корпус и палуба	4
Информация о двигателе	4
ПОДРОБНОЕ ОПИСАНИЕ	5
Construction	5
Dimensions	5
Machinery	5
Communication, Navigation, Entertainment	6
Galley and Laundry Equipment	7
Tenders and Toys	8
Deck Equipment	8
Security, Fire Fighting & Safety Equipme	8
Accommodations	8
Comments	9
Исключения	9
Отказ от ответственности	9
ФОТОГРАФИИ	10
КОНТАКТЫ	13
Контактная информация	13
Телефоны	13
Время работы	13
Адрес	13

ХАРАКТЕРИСТИКИ

Основная информация

Тип судна: Моторная яхта	Подкатегория: Semi-Displacement
Модельный год: 1989	Год постройки: 1989
Страна: United States	Верх: Hardtop

Размеры

Длина общая: 125' 0" (38.10m)	Длина по ватерлинии: 111' 0" (33.83m)
Ширина: 24' 0" (7.32m)	Макс. осадка: 6' 0" (1.83m)

Скорость, вместимость и масса

Крейс. скорость: 15 Kts. (17 MPH)	Дальность на крейсерской скорости: 1275
Макс. скорость: 17 Kts. (20 MPH)	Чистый вес: 294 Pounds
Вместимость воды: 1200 Gallons	Объем топливного бака: 10500 Gallons

Размещение

Всего кают: 4	Всего коек: 1
Спальные места: 8	Всего ком. состава: 1
Койки экипажа: 1	Спальных мест экипажа: 6
Комм. состав экипажа: 1	

Корпус и палуба

Материал корпуса: Aluminum

Дизайнер интерьера: Susan Puleo

Информация о двигателе

Двигатели: 2

Производитель: Detroit Diesel

Модель: 16V93TAM

Тип двигателя: Inboard

Тип топлива: Diesel

ПОДРОБНОЕ ОПИСАНИЕ

Construction

SHOWTIME was built in 1989 by Broward Marine with the interior design by Susan Puleo. The hull and superstructure are aluminum with teak decks. She has continually cared for and upgraded by meticulous owners since new. In addition, SHOWTIME was built to ABS specifications and has been maintained in full class since her delivery.

Dimensions

General

Length overall:	125.00 feet	(38.10 meters)
Length at waterline:	111.00 feet	(33.83 meters)
Beam (molded):	24.00 feet	(7.30 meters)
Draft:	6.20 feet	(2.00 meters)
Gross tonnage:	294 tons	
Net tonnage:	263 tons	
Displacement:	282 tons	

Capacities

Fuel capacity:	10,500 U.S. Gallons	(39,742 liters)
Water capacity:	1,200 U.S. Gallons	(4,542 liters)
Watermakers:	4,000 U.S. Gallons per day	(15,140 liters)
Lube oil:	100 U.S. Gallons	(378 liters)
Waste oil:	100 U.S. Gallons	(378 liters)
Waste water:	40 U.S. Gallons	(151 liters)

	Speed	Consumption per hour	Range	RPM's
Maximum:	17 knots	140 USG (208 liters)	2,300 nm	2,300 rpm
Cruising:	15 knots	85 USG (321 liters)	1,850 nm	2,000 rpm
Economical:	12 knots	55 USG (529 liters)	1,275 nm	1,500 rpm

Machinery

Main Engines

Engine type: (2) Detroit diesel 16V92TAM/1400 Hp

Gearboxes: ZF ratio 2.5 - 1

Drive: Propeller from Lips

Generators & Electricity

Generators:	(2) 80 Kw Northern Lights M668T31	
Output:	240V/single-phase/60 Hz	
Gen fuel consumption:	100 gallons per day per generator	
Shore power:	(2) AC shore power converters	
Batteries:	Main engine starting:	24V
	Generator starting:	12V
	Generator service:	12V
	Emergency:	12V

Air Conditioning

Manufacturer:	Marine Air BTU 300,000
Tons:	27

Other Machinery

Watermakers:	Watermakers Inc, Sea Recovery
Stabilizers:	NAIAD 301
Bow Thruster:	HPS/85hp
Fuel filtration:	Alpha Laval
Fresh water system:	Goulds
Steering system:	Wagner
Emergency system:	Wagner

Communication, Navigation, Entertainment

Communication Systems

Satcom:	Trac Phone Mini-M
Telephone system	ATT Merlin (5 lines and 19 extensions)
SSB:	SEA 322
VHF:	ICOM ICM 100 fixed (6) hand helds standard Horizon CNB 230
Cellular Phone System:	Motorola Trident
Ships Communication:	ATT Merlin

Navigation Systems

Radars:	Furuno 1510 with arpa (72 mile range)Furuno 1510 with arpa (72 mile range)
Autopilot:	Plath Navi Pilot II
Gyrocompass:	Plath Navigat 1X
Compass:	Plath Venus
Depth Sounder:	B & G Hercules 390
Plotter:	Laptop Nobletech
Weatherfax:	Alden TR IV with Navtex

Sonar: Furuno FCV 663

Wind and Speed indicator: B & G Hercules 390

Entertainment System

a. Video Equipment: (2) 27" Panasonic TV - master, salon
 (5) 20" Sony TV - Guest cabins, skylounge, crew
 (3) 13" Panasonic TV - crew
 (4) Mitsubishi VCR - cress, salon, master, skylounge
 (3) Emerson - guest cabins

b. Audio Equipment: (2) Sony CD player - skylounge, salon
 Full units - master, salon, skylounge
 Car stereo - guest cabins, crew, pilot house, foredeck, jacuzzi deck

Galley and Laundry Equipment

Main Galley Equipment

Cooking Equipment: Range: Thermador
 Oven: Maytag
 Microwave: General Electric

Refrigeration & Freezer: Refrigeration: Subzero
 Freezer: Subzero
 Icemakers: Subzero
 Winecooler: Subzero

General Galley: Dishwasher: Maytag
 Compactor: Whirlpool

Additional Galley Equipment:

Cooking Equipment: General electric - pantry

Refrigeration & Freezer: General Electric freezer - laundry
 Chest freezer - laundry
 Subzero icemaker - pantry

General Galley: Maytag dishwasher - pantry
 Whirlpool trashcompactor

Laundry Equipment

Main Laundry Equipment: (3) Maytag washers - laundry room
 (3) Maytag dryer - laundry room

Additional Laundry: (1) Singer presser

Tenders and Toys

Water ski's: (2) sets of Connolly and slalom ski
 Snorkel gear: (8) sets US Divers

Deck Equipment

Anchor Windlass System: (2) 7,500 lb Ideal Anchor Windlass system
 Anchors: (2) 350 lb Anchors Pool-N
 Anchor Chain: 1/2" x 400 and 1/2" x 350 Anchor chain
 Aft Warping Capstans: (2) Ideal Deck capstans - aft deck
 Boat Crane and Davits: Marquipt main tender Davits 1500 lbs
 Boarding: Marquipt Stern boarding gangway, 12' manual with extension

Security, Fire Fighting & Safety Equipme

Security Equipment (5) Security cameras - aft deck, mast, (2) side entrance, engine room (6) Security monitors - crew mess, pilothouse, all TV's (2) Door alarms - pantry, main salon (2) Safe's - owners cabin, office

Fire Fighting Equipment (8) Fire, heat, smoke detectors - crew, galley, engine room, pantry, entry, guest acc, pilot house (2) Fire halon system - engine room (18) Portable halon system, Portable CO2, Fire extinguishers (5) Seawater firefighting stations - engine room, port entrance, aft deck, boat deck

Safety Equipment (2) Liferrafts Elliot - 10 persons each (3) Liferings (2) EPIRB'S ACR 406 Mhz RLB-23 (50) Flares (2) Marine Medical kit

Accommodations

General Owner's Suite: The Owners's Suite is located on the Main deck forward of the dining room. Two individual baths, a full-size dressing table, plush sitting area, and walk-in closet are just some of the features of this private retreat. **Guests:** The spiral staircase on Main deck leads to a handsome lower lobby and to (3) three more staterooms. The rose VIP stateroom and the Emerald guest suite are equal in size and appointments to the master staterooms of most yachts. The third stateroom, decorated in a palette of satiny silver, has a pair of twin beds. All of the lower staterooms have oversized private baths offering the luxury of full jacuzzi tubs. All staterooms have elaborate entertainment systems **Crew:** The crew's quarters are located on the lower deck and sleeps 6. **Sun Deck** An (8) person whirlpool spa is tucked between the wings of the yachts communications arch on the Sundeck. **Boat Deck** The Boat deck is designed to be the center of activity with unparalleled sunning spaces and unrestricted views of the passing scenery or the watersports activities of others in your party. The bar on boat deck, is

the perfect meeting place before dinner or quiet time during the day. This is also where the pilothouse is located to either meet with the captain or enjoy the view during your cruise. Main Deck The aft deck of the Main deck offers the perfect spot for outdoor dining. Inside we find the exquisite salon and dining room for a party of 8. The Master stateroom is located forward of the dining room. Lower Deck The dramatic spiral staircase sweeps guests below to a handsome lower lobby and to three more staterooms; the rose VIP stateroom, the emerald guest suite and a twin guestroom.

Comments

This ABS class yacht offers spacious, luxurious living on three full decks plus the fun of the topmost Jacuzzi deck. A true custom Motoryacht featuring an upscale contemporary interior, palatial formal dining salon, huge aft deck, large water sports swim platform, four generous staterooms including a full beam VIP suite and a spectacular on-deck owner's suite with cathedral ceiling. SHOWTIME is a 125' Motoryacht with accommodations and amenities normally found on considerably larger yachts.

Without question SHOWTIME is the “best value” in a Tri-Deck Motoryacht on the market today!

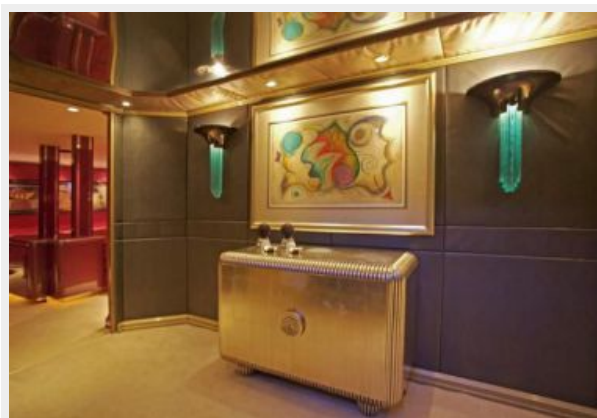
Исключения

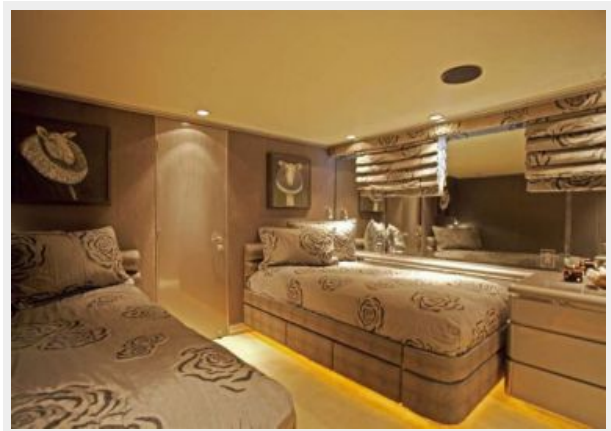
При продаже яхты исключаются личные вещи владельца.

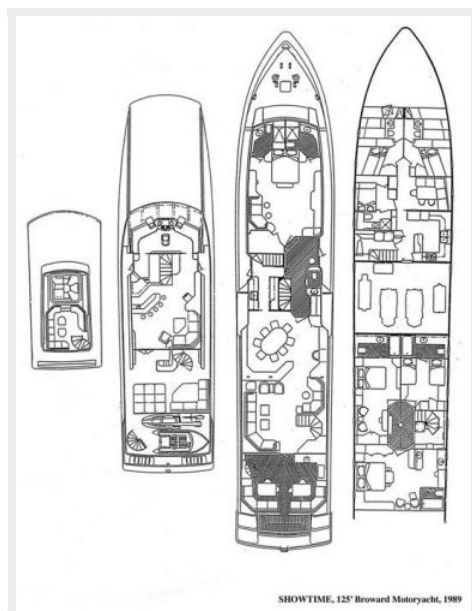
Отказ от ответственности

Компания предоставляет описание судна или яхты добросовестно, но не может гарантировать точность этой информации, а также не ручается за техническое состояние. Покупатель должен проинструктировать своих агентов или оценщиков исследовать представленную информацию более подробно, по собственному желанию. Продажа судна или яхты, изменение цены или снятие с продажи будет происходить без предварительного уведомления.

ФОТОГРАФИИ







КОНТАКТЫ

Андрей Шестаков (Andrey Shestakov) – ведущий яхтенный брокер отдела продаж яхт и судов компании Shestakov Yacht Sales Inc. Официальный представитель Shestakov Yacht Sales Inc. для русскоговорящих клиентов в центральном офисе компании в Майами/Форт Лодердейл/Флорида/США.

Контактная информация

Email: andrey@shestakovyachtsales.com

Web: shestakovyachtsales.com

Телефоны

Краснодарский край: **+7(918)465-66-44**

США, Майами, Флорида: **+1(954)274-4435**

Время работы

Понедельник – Суббота: **9:00 - 21:00**
EDT

Воскресенье: **Закрето**

Адрес



Harbour Towne Marina, 850 NE 3rd St,
STE 213, Dania, FL 33004