

## HELIOS — PERINI NAVI



**Судостроитель:** [PERINI NAVI](#)

**Год постройки:** 2007

**Модель:** Крейсерская яхта

**Цена:** ЦЕНА ЯХТЫ ПО ЗАПРОСУ

**Местонахождение:** Italy

**Длина общая:** 148' 6" (45.26m)

**Ширина:** 31' 9" (9.68m)

**Мин. осадка:** 12' 8" (3.86m)

**Макс. осадка:** 28' 7" (8.71m)

**Крейс. скорость:** 11 Kts. (13 MPH)

**Макс. скорость:** 14 Kts. (16 MPH)

Купить **HELIOS — PERINI NAVI** а также выбрать подходящую вам яхту из нашего каталога яхт вам поможет опытный яхтенный брокер Андрей Шестаков. На сегодняшний день компания **Shestakov Yacht Sales Inc.** имеет большое количество яхт в собственном списке продаж, а также тесно сотрудничает со всеми крупными яхтенными производителями по всему миру.

Для того чтобы купить яхту **HELIOS — PERINI NAVI** а также проконсультироваться по любому вопросу связанному с покупкой, продажей, чартером яхт позвоните по телефону **+7(918)465-66-44**.

# ОГЛАВЛЕНИЕ

---

ОГЛАВЛЕНИЕ	2
ХАРАКТЕРИСТИКИ	4
Основная информация	4
Размеры	4
Скорость, вместимость и масса	4
Размещение	5
Корпус и палуба	5
Информация о двигателе	5
ПОДРОБНОЕ ОПИСАНИЕ	6
Accommodations	6
Construction	6
Main Characteristics	6
Mechanical Equipment	7
Electrical System	8
Galley/Laundry	9
Communication and Navigation Equipment	10
Entertainment Equipment	11
Tenders and Toys	13
Deck Equipment	14
Sails and Rigging	14
Safety and Security Equipment	15
2016 Refit	15
Work List	16
Remarks	18
Exclusions	18
Исключения	19
Отказ от ответственности	19
ФОТОГРАФИИ	20

---

КОНТАКТЫ	23
Контактная информация	23
Телефоны	23
Время работы	23
Адрес	23

---

# ХАРАКТЕРИСТИКИ

## Основная информация

Тип судна: Крейсерская яхта

Модельный год: 2007

Год постройки: 2007

Год обновления: 2016

Страна: Italy

Кубрик: Да

## Размеры

Длина общая: 148' 6" (45.26m)

Длина по ватерлинии: 121' 4" (36.98m)

Ширина: 31' 9" (9.68m)

Мин. осадка: 12' 8" (3.86m)

Макс. осадка: 28' 7" (8.71m)

Длина привального бруса: 148' 6"  
(45.26m)

## Скорость, вместимость и масса

Крейс. скорость: 11 Kts. (13 MPH)

Дальность на крейсерской скорости:  
4100

Макс. скорость: 14 Kts. (16 MPH)

Водоизмещение: 724000 Pounds

Чистый вес: 321 Pounds

Вместимость воды: 2166.2108264  
Gallons

Вместимость сточного бака:  
422.6752832 Gallons

Объем топливного бака: 8268.5852276  
Gallons

## Размещение

---

**Всего кают:** 4

**Всего коек:** 13

**Спальные места:** 13

**Всего ком. состава:** 6

**Каюта капитана:** Да

**Каюты экипажа:** 3

**Койки экипажа:** 6

**Спальных мест экипажа:** 6

**Комм. состав экипажа:** 3

## Корпус и палуба

---

**Материал корпуса:** Steel

**Материал палубы:** Teak over Aluminum

**Дизайнер корпуса:** Ron Holland

**Дизайнер экстерьера:** Perini Navi

**Дизайнер интерьера:** Owner's Wife/Perini  
Navi Design Team

## Информация о двигателе

---

**Двигатели:** 1

**Производитель:** Caterpillar

**Модель:** C32

**Тип топлива:** Diesel

# ПОДРОБНОЕ ОПИСАНИЕ

## Accommodations

*HELIOS* sleeps 11/13 in the owner/guest accommodations in four permanent cabins, including a master aft with king size bed and showers plus three additional cabins with ensuite heads and showers. The master cabin can easily be converted into two separate cabins with a pull out sleeper couch. In addition, one guest cabin has a third Pullman bunk, and a second cabin not only has a Pullman berth, but a bunk that lowers from the ceiling as a fourth berth. *HELIOS* has six crew in three separate cabins forward with the Captain's cabin to starboard with its own ensuite head and shower. The two double crew cabins forward to port and starboard each have their own head and shower. A seventh temporary crew member may be accommodated in the laundry room which is equipped with a Pullman berth.

## Construction

Steel hull with aluminum superstructure and teak decks.

## Main Characteristics

### General:

BUILDER:	Perini Navi - Viareggio, Italy
CLASSIFICATION:	ABS 2016 Ten Year Survey; Malta Cross A 1 Yachting Service - AMS + MCA
LOA:	148'6" -- 45.3m
DRAFT:	12'8" -- 3.9m keel up 28'7" -- 8.75m keel down
LWL:	121'4" -- 37m
DESIGNER:	Ron Holland/Perini Navi; Interior Designer: Perini Navi/Owner's wife
YEAR:	2007
BEAM:	31'9" -- 9.73m
FIXED BALLAST:	17 Tons
CENTERBOARD BALLAST:	21 Tons
DISPLACEMENT:	362 Tons
TONNAGE:	315 Tons (GRT)

**Capacities:**

FUEL CAPACITY:	31,300L -- 8269.5G
WATER CAPACITY:	8,200L -- 2166.4G
LUBRICATING OIL:	400L -- 105.7G
GREY/BLACK WATER:	1,600L -- 422.6G
SLUDGE/DIRTY OIL:	400L -- 105.7G
BILGE WATER:	800L -- 211.3G
FUEL CONSUMPTION:	28 G/Hr
SPEED:	10.5 Knots/13.5 Knots
RANGE:	4,100 nm @ 10.5 Knots @PAGEBREAK@

**Mechanical Equipment**

ENGINES:	1 x Caterpillar, C32
ENGINE HOURS:	0 hrs (as of 11/1/16) Complete Overhaul 11/1/16
GEARBOXES:	Hundested A/S, CPG 50, 4-11:1
THRUSTERS:	2 x Hundested A/S FT2 ½ R, 75 Hp (Retractable Transverse)
STEERING:	Marsili hydraulic, double piston, rudder torque 3000 kgm 1 x sea water-lubricated Hundested A/S, "Sandvik SAF 2205" duplex stainless
PROPELLER:	steel propeller shaft, with NI-AL bronze controllable pitch propeller approx.diameter 1500mm

NOTE: The centerboard system is controlled from the starboard external sail system control panel. The system is activated by a hydraulic piston connected to the hull structure with a spherical joint; the pin for the disconnection of the piston from the hull is dismantled inside the yacht through hatches executed on the centerboard trunk side.

- Earth fault indicator on the main switchboard.
- An automatic 24V CC submergible pump is installed in lowest part of each bilge compartment.
- The fire fighting pump is plumbed to the bilge manifold in order to operate as a bilge pump in case of emergencies.
- A bilge oily water separator is installed in the engine room.
- The bilge separator is "IMO type II" approved.
- Hot and cold water distribution is by two 380V AC electric pumps, one back-up to the other and connected to an electronic type autoclave. Hot water is produced by two stainless steel electric boilers.

## Other machinery

- 2 x Idromar MC55 Watermakers w/50 micron MC3 sand filters
- Alfa Laval fuel purifier 900lph
- Racor fuel filter, triple filter 2040 180 x 2 GPH; fuel transfer pump is fitted with an in-line fuel flow meter on the output side.
- Fuel purifier
- Fuel manual transfer pump
- Lubricating oil tank with a filter on the lube oil delivery; NOTE: In the engine room there are quick disconnects provided for separate dirty oil discharge lines and clean oil filling lines on port and stbd between main engine and generator.
- Two rotary air compressors and compressed air reservoir
- Active carbon filters, silver ion sterilizer (fore bilge area)
- Hamman system (fore bilge area)
- Bilge water treatment system
- Sludge discharge pump
- Oil transfer pump
- Refrigerated garbage locker in forepeak
- Emergency generator with day tank and emergency panel
- 2 x Boilers with 200L capacity each
- UV sterilizer for fresh water (forward bilge)

## Electrical System

### Generators:

Main Generators: 2 x Caterpillar 3054 DIT, 380 V 50 Hz, 1500 rpm, 69.5 Kw (New Nov 2016)  
@PAGEBREAK@

Night Generator: 1 x Caterpillar 3054 DINA 380V 50 Hz, 1500 rpm, 38 Kw (New Nov 2016)

Emergency Generator: 1 x Hatz air cooled emergency generator (in lazarette) 12 Kw 1500 rpm  
380V 50 Hz

NOTE: Generators exhaust system consists of an Aqua-Lift muffler with efficient sound reducing qualities and a gas/water separator which allows further washing of gasses and noise reduction.

### Electricity:

380V /50 Hz three-phase with neutral for machinery power. 24V / 50 Hz by transformers for lighting circuits.

220V / 50 Hz single-phase for lighting and low power machinery 24V cc for emergency lighting, signalling and R/T stations circuits, electronic instruments, and alarms. Shore Power:

1 x ASEA, 60 Kw shore power frequency converter with seamless transfer and smart box located in an accessible position in the aft peak. Batteries:



1 x gel 24V Main engine starting battery bank 2 x gel 24V Generator starting battery bank 1 x gel 12V Emergency Generator starting battery Air Conditioning:

The system is composed of terminal area units (fan-coils)

and 2 external air make up units

## Galley/Laundry

---

### Main Galley:

1 x Miele H 399 B convection oven

Granite countertop and splash board

1 x Bosch Innowave HM9356EU microwave oven

1 x Miele G 7856 stainless steel dishwasher

1 x Hoshizaki IM-25 water cooled ice maker

1 x ISE 77 macerator

1 x range hood stainless steel variable speed driven controlled @PAGEBREAK@

1 x Insinkerator trash compactor

1 x Custom built-in 6 door - 3 drawer refrigerator/freezer

1 x Angelpro 4 plate electrical stove and 2 plate electric Halogen cooktop

1 x Angelpro Grill top

1 x Angelpro electric steamer/convection oven NOTE: 3 x sets of china for 12 people w/3 different flat plate sizes, including cup & saucer, soup/salad bowl with a standard set of serving trays; 132 pieces of glassware; 12 Martini glasses; 2 x sets of cutlery for 12 people including fish and standard serving pieces; 1 x set of informal cutlery for 12 people including fish and standard serving pieces 1 x set of steak knives for 32 people.

### Crew Mess:

1 x Insinkerator trash compactor 1 x Miele small commercial refrigerator

### Salon Interior Bar:

Marble counter top 1 x Miele small commercial refrigerator 1 x Hoshizaki ice maker 1 x standard stainless steel sink

**Aft Cockpit Exterior Bar:** Marble Counter top 1 x Miele small commercial refrigerator (located in port side corner bar) 1 x Hoshizaki ice maker (located in port side corner bar) 1 x Insinkerator instant hot tap

**Lazarette:** 2 x Liebherr 60L freezer 1 x Liebherr 60L refrigerator 1 x Liebherr 120 bottle wine fridge 1 x 50 bottle wine fridge

**Laundry:** 2 x Miele WS5446 MC23 steel washing machine 2 x Miele T5206 steel dryers 1 x ironing board 1 x standard stainless steel sink w/cover in Corian

## Communication and Navigation Equipment

---

### Communication Equipment:

- 2 x Furuno 2721 VHF (wheelhouse, helm station)
- 1 x Seatel 4006 VSAT (IT data and phone)
- 3 x cellular gsm/gprs interface (voice, fax, data)
- 4 x portable VHF ICOM IC M1 Euro
- 1 x Furuno 8800-DSC VHF transceiver unit w/display and integrated DSC keyboard
- 2 x McMurdo R2 portable units
- 1 x Furuno Felcom 15 system Satcom
- 1 x Furuno NX-700 Navtex receiver
- 1 x Furuno FA100 AIS system
- 1 x GPS/VHF combo antenna
- 1 x McMurdo E3 EPIRB, 406 Mhz
- 1 x McMurdo S3 radar transponder SART 9 Ghz
- 1 x Panasonic KX-TDA 100 telephone system w/ maximum of 18 intercommunicating sockets
- Interphone communication system w/two (2) control units with volume controls in the wheelhouse and main deck. There are reversible watertight loudspeakers in the crew area, engine room (complete with headset jack), and the panel rudder area.

### Navigation Equipment:

- 1 x C. Plath Navigat MK1 gyrocompass
- 1 x electronic compass
- 1 x C. Plath Navipilot V/GM autopilot
- 1 x gyrocompass analogue repeater
- 1 x gyrocompass remote control
- 4 x Hatteland 19" LCD flat color monitor
- 1 x Furuno FAR-2117 radar w/4" interfaced with Gyrocompass and AIS
- 1 x Hatteland PC for charting purposes
- 1 x Furuno Max Sea Professional charting software
- 1 x Radar Integrator board

- 1 x Video matrix (to distribute images in two rooms)
- 2 x Infrared receivers
- 1 x Furuno Navnet-BB radar plotter
- 1 x Furuno GD 1920C-BB chart plotter
- 1 x Furuno ARP-11 autoplotter
- 1 x Furuno ETR 6/10 depth sensor
- 2 x GPS Furuno GP 90 w/antenna
- 1 x Furuno Twins Scope sonar
- 1 x AGF 1500 UPS
- 1 x B&G Hercules 2000 series
- 2 x Furuno Navnet BB
- 1 x Furuno FAR-2117 radar
- 1 x C. Plath Jupiter magnetic compass

## Entertainment Equipment

---

- 1 x Naval Nargentus Terrestrial TV and FM/AM radio antenna
- 1 x Seatel 4004 satellite dome (prewired for Sat TV, equipment not installed)
- Audio system is controlled through Crestron Touch Panel

### Main Salon:

- 1 x Hitachi 55" plasma TV monitor
- 1 x Samsung SW5000 multistandard VTR and worldwide TV tuner
- 1 x Rotel DVD-1060 multizone DVD player
- 1 x Rotel RSX-1056 Dolby Digital Surround 5X75 watt amplifier
- 3 x B&W VM1 speaker
- 1 x B&W AS subwoofer
- 2 x B&W CWM800 in-wall/in-ceiling speakers
- 1 x AMX N14000 control unit w/Ethernet port
- 1 x AMX AXD-IRSM+ infrared receiver
- 1 x Philips RU-980 intelligent remote control w/color touch screen display
- 1 x AMX AXD-MSP8 softwire 8 button keypad
- 1 x Xantech 480-80B Ir receiver
- 1 x Xantech 789-44 connecting block w/power supply
- 1 x Extron MTP R AV audio/video rx from CAT 5
- 1 x Imerge M2004-160, 4 zone multi-room hard disk audio server

### Aft Cockpit:

- 1 x NEC LT380 Digital Projector w/removable Shine Through 64" movie screen
- 1 x Teac CR-H220 sintoamplifier
- 1 x Apart SBR-160 audio amplifier
- 6 x Boston Dsi-460 2-way speaker

**Owner's Stateroom:**

- 1 x Hitachi 55" plasma TV monitor
- 1 x Samsung SW5000 multistandard VTR and worldwide TV tuner
- 1 x AMX AXD-IRSM+ infrared receiver
- 1 x Extron MTP R AV audio/video rx from CAT 5
- 1 x Sintoamplifier AV w/multizone DVD player
- 2 x B&W CWM800 in-wall/in-ceiling speakers
- 1 x Xantech 480-80B Ir receiver
- 1 x Xantech 789-44 connecting block w/power supply
- 1 x Philips RU-980 intelligent remote control w/color touch screen display
- 2 x Bose 131 in-wall/in-ceiling marine speaker (bathroom)
- 1 x Raymar CPA50 amplifier (40 watt) (bathroom)
- 1 x AMX AXD-MSP8 softwire 8 button keypad

**Guest Staterooms:**

- 1 x Hitachi 26" LCD TV
- 1 x Samsung SW5000 multistandard VTR and worldwide TV tuner
- 1 x AMX AXD-IRSM+ infrared receiver
- 1 x Extron MTP R AV audio/video rx from CAT 5
- 1 x Bose Car Stereo DVD Multizone Player
- 2 x B&W CWM800 in-wall/in-ceiling speakers
- 1 x Xantech 480-80B Ir receiver
- 1 x Xantech 789-44 connecting block w/power supply
- 1 x Philips RU-980 intelligent remote control w/color touch screen display

**Lazarette:**

- 1 x Sony CDX-F7500 Car Stereo w/CD Player, CD-R/RW/MP3 Reader, RDS digital tuner, AUX input
- 2 x JBL GTO 526 speaker

**Wheelhouse:**

- 1 x Sony CDX-F7500 Car Stereo w/CD Player, CD-R/RW/MP3 Reader, RDS digital tuner, AUX input
- 2 x B&W CCM50 speaker

**Crew Mess:**

- 1 x Hitachi 17" LD4200 LCD TV
- 1 x Samsung SW5000 multistandard VTR and worldwide TV tuner
- 1 x AMX AXD-IRSM+ infrared receiver
- 1 x Extron MTP R AV audio/video rx from CAT 5
- 1 x Sintoamplifier AV w/multizone DVD player

- 2 x B&W CWM800 in-wall/in-ceiling speakers
- 1 x Xantech 480-80B Ir receiver
- 1 x Xantech 789-44 connecting block w/power supply
- 1 x Philips RU-980 intelligent remote control w/color touch screen display

### **Captain's Cabin:**

- 1 x Hitachi 17" LD4200 LCD TV
- 1 x Samsung SW5000 multistandard VTR and worldwide TV tuner
- 1 x AMX AXD-IRSM+ infrared receiver
- 1 x Extron MTP R AV audio/video rx from CAT 5
- 1 x Sintoamplifier AV w/multizone DVD player
- 2 x B&W CWM800 in-wall/in-ceiling speakers
- 1 x Xantech 480-80B Ir receiver
- 1 x Xantech 789-44 connecting block w/power supply
- 1 x Philips RU-980 intelligent remote control w/color touch screen display

### **Crew Cabins:**

- 1 x Sony CDX-F7500 Car Stereo w/CD Player, CD-R/RW/MP3 Reader, RDS digital tuner, AUX input
- 2 x JBL GTO 526 speaker

### **Laundry:**

- 1 x Sony CDX-F7500 Car Stereo w/CD Player, CD-R/RW/MP3 Reader, RDS digital tuner, AUX input
- 2 x JBL GTO 526 speaker`

## **Tenders and Toys**

---

- 1 x Novurania 15 ft. guest tender w/70 Hp engine (stored on foredeck)
- 4 x SUPs
- 2 x kayaks (2 person)
- Assortment of towable toys
- 1 x set of adult water skis
- 1 x set of child water skis
- 6 x set of dive gear (includes tanks, bc's, regulators, etc.)
- 1 x Capitano C3 E Diving compressor is installed in the aft peak with an intake in the swimming platform area. Dive lockers have built in tank racks with compressed air point available adjacent (max 4 bottles)
- 12 x set of snorkel gear
- Various wet suits
- 2 x Sea scooters
- 4 paddle boards NOTE: The tender filling station in the lazarette has a separate electric

pump, with hose and gun. This pump will also fill the emergency generator tank.

## Deck Equipment

---

- 1 x Motomar hydraulic boarding ladder (built in and recessed in hull)
- 1 x Motomar hydraulic passarelle
- 1 x Kahlenberg T1 airhorn
- 4 x underwater lights
- 2 x Nanni anchor windlass
- 2 x Nanni aft mooring capstans
- 2 x sets of mooring whips bases
- 1 x set of mooring whips
- 1 x shell door located port side and operated by electro-hydraulic system, teak covered and has two retractable bits, one handrail, a swimming ladder, two recessed lights sideways, and a hot/cold water shower near to the swimming platform
- Swimming platform built into the transom w/stairs to access the platform. The platform has teak deck planking, removable side handrails, and deep stainless steel swimming ladder with teak step treads. The platform may be used as a boarding platform or tender boarding area.
- 1 x 30m shore power and telephone cable
- 1 x battery operated loud hailer
- 1 x Fortress Anchor w/ 10 meter chain rode

## Sails and Rigging

---

- Aluminum mast with 5 sets of spreaders and a carbon fiber stoway boom by Perini Navi
- Standing rigging is Nitronic rod 2014
- Lights on the rig shine up and down and a one directional light is controlled from the flybridge
- Mast height is approx. 52.4m/171'9"
- Sails include Genoa (early 2016), Main (2007), Blade (2007), MPS (2012), Stay Sail (Nov 2016)
- 7 x Perini Navi electric winches for sail handling
- 3 x Perini Navi electric winches for tender davit
- 2 x Antal W66 manual winches
- 2 x Harken #1120 three speed conventional winches on foredeck

NOTE: Perini Navi sails are trimmed by Captive Winches in deck compartments and halyards raised by the same winches below decks in machinery spaces. These winches work on electrical power. The furlers for the headsails are also by Perini Navi and electric for both the genoa and the blade. Controls for the sails are from the flybridge station and all done by finger touch controls.

---

## Safety and Security Equipment

---

- Vessel is equipped with an intrusion alarm that monitors all hatches and entrance ways.
- The engine room is equipped with a CO2 fire fighting system
- The engine room and galley has heat detectors installed
- Carbon Monoxide sensors in all cabins crossed by the exhaust line
- TVCC system (located on port and starboard spreader, engine room)
- 2 x fire fighting suits
- 2 x inflatable 20 person life raft, type A
- 1 x 8 man life raft on flybridge
- 2 x MOM's on aft deck
- 18 x adult life jackets
- 5 x child life jackets
  
- 2 x breathing apparatus w/4 spare bottles
- 5 x CO2 fire extinguisher
- 15 x 6 kg Dry Powder fire extinguisher
- 9 x 2 kg Dry Powder fire extinguisher
- 5 x fire extinguisher in accommodations
- 1 x MCA approved Medical kit
- 2 x life buoys fitted with self-igniting light and smoke signal
- 2 x life buoys fitted with a buoyant 30m lifeline
- 18 x lightweight thermal suits (MCA approved)
- 1 x set of diurnal signals
- 4 x Rocket line throwers

---

## 2016 Refit

---

- (3) Three new generators.
- New paint job.
- Entertainment upgrade of \$180K including installation of SAT TV and movie on demand.
- New fabrics in guest area.
- New fabrics in salon.
- Overhaul of main engine (\$100K).
- New Staysail and Genoa (May 2016)
- Main sail overhauled and washed.
- 10 Year ABS Survey.
- All thru hulls replaced.
- Shafts pulled and new bearings.
- Shell door and stern doors removed.
- Hydraulic rams rebuilt.
- Keel ram rebuild.
- Fire pumps, AC pumps, Windlass motors all rebuilt.

- All captive winches rebuilt.
- Full rig check (Overhauled 2015 by Perini with all rod rigging changed).
- Boom mandrel and motor overhauled.
- Air conditioning ducting in side yacht replaced and air handlers changed.
- Interior salon re-varnished.
- All interior tables and furnishings re-varnished.
- Nav system interface changed with additional function and new monitoring added to crew cabins.
- Air compressors, watermakers, sewage system, alfa laval, jet pumps, all overhauled.
- New halogen cook top in galley.

## Work List

---

**Paint:** Entire yacht from top of mast to bottom of keel Paint **Nov 2016** Hull in process of being done, complete **June 2018**

**ABS:** 10 Year Survey **May 2017**

**RINA** fully up to date **May 2017**

**Flybridge: November 2017**

- BOTH Starboard and Port Navigational control panels have been replaced. Includes new navigational screens, new push buttons, computer mice, new matting and mounting.
- Flybridge: BOTH Starboard and Port Helm control stations are replaced. New VHF radios.
- Flybridge: Sail control Panel including displays

**AIS & GPS** New Units, display(s), and antennas. **November 2017** Engineering:

- **Three new Caterpillar Generators November 2016**
- **New Soundown Exhaust system for generators November 2016**
- **Complete rebuild of main engine November 2016**
- Rebuild both AC Seawater pump **November 2017**
- Complete rebuild of ALFA LAVAL **June 2018**
- Complete service watermaker units January 2018
- Garbage/Rubbish locker replace compressor **November 2017**
- Synchronize Generators **June 2017**
- Generator Exhaust Valves **May 2018**
- ENGINE ROOM REFIT INCLUDES: **November 2016** ( Extensive service to all systems, DriveTrain service, replace P bracket bearings, including Hundestadt variable pitch propeller and working inspection.)
- Vulkan coupling replaced **November 2016**
- Both thrusters serviced November 2016
- All tanks inspected **November 2016**
- Engine room CO2 serviced, including hydro test **November 2016**



- Service hot water heaters **May 2018**
- Make-Up Air rebuild **April 2018**

#### Lazarette:

- Addition of four SeaBobs July 2017
- Major service of steering gear November 2017 - April 2018
- Shell Door Ram and Pin to be replaced, all sensors replaced and calibrated May 2018
- SEABOB Rack installed March 2018
- AV Alley gutted (Removed old electronics rack, new shelves in this space.) April 2018
- Work bench resurfaced March 2018
- New Deep-Freeze Freezer installed July 2017
- Dismount and service of:
- Shell door 2016 & May 2018
- Stern door/platform 2016 & May 2018
- Side boarding 2016 & May 2018

#### Hull:

- Paint
- Dismount and service keel **November 2016**
- Dismount and service rudder **November 2016**
- Side Boarding Ladder refit (also including Shower, Light sockets) **May 2018**
- Transom SIDE LIGHTS , Teak strips replaced, Hatch hinges to be replaced and aligned.
- UNDERWATER LIGHTS renewed (could use upgrade!) **May 2018**
- SHELL DOOR SIDE LIGHTS and Landing lights. **April 2018**
- SHELL DOOR Cylinder **April 2018**
- Passarelle complete refit **May 2018**
- Anodes **June 2018**
- Bottom Paint **June 2018**

#### Lights:

- **MAST, SPREADER, BOOM, EMERGENCY (All Lights to be replaced) May 2018**
- FULL Inspection of mast, including standing gear. Shrouds, Hounds, and spreader tips.
- **November 2016 (report available upon request)**

#### Cockpit:

- Over Head Lighting **April 2018**
- Leak detect from Awning track **February 2018**
- Remove awning track, Clean and replace with proper sealant. **March 2018**
- Interior:

- Interior Varnish where needed **April - May 2018**
- Over head lighting in Salon (Rope Lights )**April 2018**
- Salon ceiling liners - new velcro **April 2018**
- GALLEY Sliding door **April 2018**
- GALLEY exhaust rebuilt **April 2018**
- Refrigeration, SEA WATER pump **March 2018**
- New larger monitor at chart table **April 2018**
- CO2 sensor/ fire system **March 2018**
- **AC** ducting replaced in salon and guest areas **November 2016**
- **New Windows Main Salon** all replaced **November 2016**
  - •new floor crew mess November 2016
  - **revarnish of salon floor November 2016**
- New induction burners added to galley stove **November 2016**

Deck:

- All captive winches serviced **November 2016**
- Complete profile of teak deck **April 2018**
- All painted surfaces waxed two coats **March 2018**
- All metal three coats insulator wax **April 2018**

## Remarks

---

*HELIOS* presents a unique interior with a refreshing interior design and the ability to sleep ten to as many as twelve guests in five cabins all with ensuite facilities. All this with a special effort by Joe Smullin, one of the world's premier acoustical engineers, makes *HELIOS* extremely quiet under all conditions. *HELIOS* is a great combination of a cruising yacht with excellent sailing performance and the most flexible interior to accommodate from a few to many guests in a moderately, shoal draft yacht. Offered by a highly motivated Seller, offers encouraged. **NOT FOR SALE OR CHARTER TO U.S. RESIDENTS WHILE IN U.S. WATERS**

## Exclusions

---

- 3 sets of china for 12 (Hermes, Yellow Rimmed, and White with Raised Figures)
- Artwork (List Available Upon Request)
- Antique coffee table
- Owner's and crew's personal belongings
- All books and material not related to Class Requirement
- Ornaments, statues, and wood carvings
- All throws
- Candle and napkin holders
- 1 Set of cutlery
- 1 Set of antique dessert plates

- DVD library
- CD library

**Exclusions** include all of Owner's personal effects.

All speeds, capacities, consumption, etc. are approximate or estimated; measurements can also be approximate. Specifications are provided for information only and particulars herein obtained from sources believed to be correct, but are not guaranteed. Buyer should instruct his agent and/or surveyor to check all details for accuracy. Offered subject to prior sale, price and/or inventory change, or withdrawal from the market without notification.

## Исключения

---

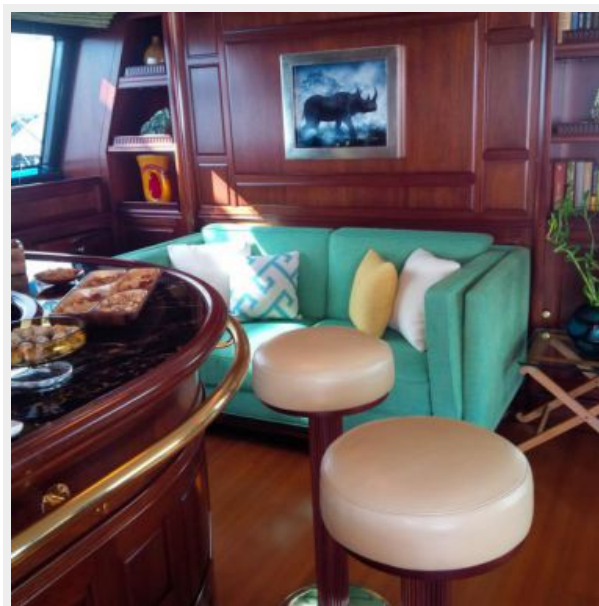
При продаже яхты исключаются личные вещи владельца.

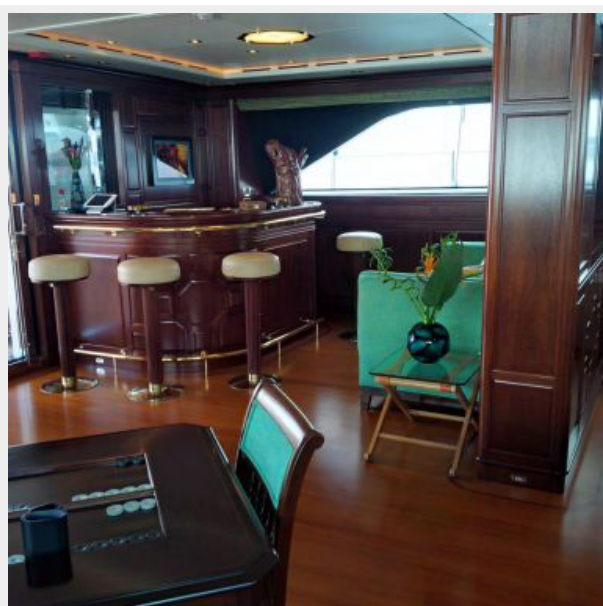
## Отказ от ответственности

---

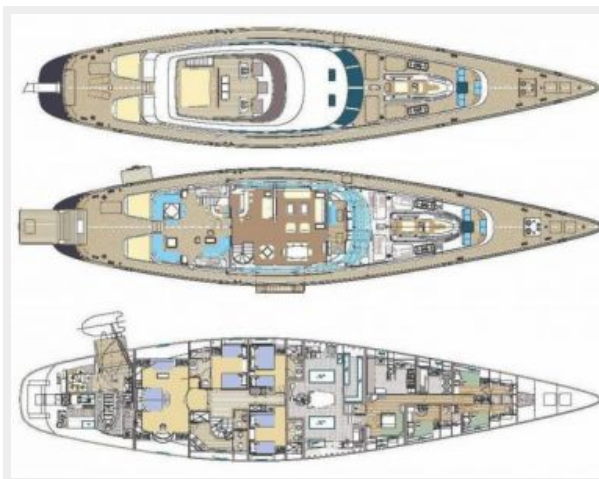
Компания предоставляет описание судна или яхты добросовестно, но не может гарантировать точность этой информации, а также не ручается за техническое состояние. Покупатель должен проинструктировать своих агентов или оценщиков исследовать представленную информацию более подробно, по собственному желанию. Продажа судна или яхты, изменение цены или снятие с продажи будет происходить без предварительного уведомления.

# ФОТОГРАФИИ









# КОНТАКТЫ

---

Андрей Шестаков (Andrey Shestakov) – ведущий яхтенный брокер отдела продаж яхт и судов компании Shestakov Yacht Sales Inc. Официальный представитель Shestakov Yacht Sales Inc. для русскоговорящих клиентов в центральном офисе компании в Майами/Форт Лодердейл/Флорида/США.

## Контактная информация

---

Email: [andrey@shestakovyachtsales.com](mailto:andrey@shestakovyachtsales.com)

Web: [shestakovyachtsales.com](http://shestakovyachtsales.com)

## Телефоны

---

Краснодарский край: **+7(918)465-66-44**

США, Майами, Флорида: **+1(954)274-4435**

## Время работы

---

Понедельник – Суббота: **9:00 - 21:00**  
EDT

Воскресенье: **Закрето**

## Адрес

---



Harbour Towne Marina, 850 NE 3rd St,  
STE 213, Dania, FL 33004