

## MARAZUL — POOLE CHAFFEE



**Builder:** POOLE CHAFFEE

**Year Built:** 1986

**Model:** cruiser

**Price:** PRICE ON APPLICATION

**Location:** United States

**LOA:** 98' (29.87m)

**Beam:** 24

**Max Draft:** 6' 2" (1.88m)

**Cruise Speed:** 10 Knots Kts. (12 MPH)

Our experienced yacht broker, Andrey Shestakov, will help you choose and buy a yacht that best suits your needs **Marazul — POOLE CHAFFEE** from our catalogue. Presently, at Shestakov Yacht Sales Inc., we have a wide variety of yachts available on our sale's list. We also work in close contact with all the big yacht manufacturers from all over the world.

If you would like to buy a yacht **Marazul — POOLE CHAFFEE** or would like help answering any questions concerning purchasing, selling or chartering a yacht, please call **+1(954)274-4435**

# TABLE OF CONTENTS

---

TABLE OF CONTENTS	2
SPECIFICATIONS	4
Overview	4
Basic Information	4
Dimensions	4
Speed, Capacities and Weight	5
Accommodations	5
Hull and Deck Information	5
Engine Information	5
PHOTOS	6
Salon	6
Salon fwd	6
Galley	6
Entertainment center	6
Master Bath	6
Master on-deck stateroom	6
Guest Bath 2	7
Guest stateroom	7
Guest stateroom 2	7
Office/stateroom	7
Guest Bath 1	7
Crew berth	7
Crew settee	8
Pilothouse	8
Flybridge settee	8
Flybridge settee	8
Jacuzzi	9
Flybridge fwd view	9

---

Cockpit	9
Fore deck view	9
Gensets	9
Engine Room	9
Layout	10
Profile	10
<b>CONTACTS</b>	<b>11</b>
Contact details	11
Telephones	11
Office hours	11
Address	11

---

# SPECIFICATIONS

---

## Overview

---

"Marazul" is an extremely unique long-range yacht with transoceanic capabilities and heavy, seaworthy aluminum construction. She also has an aesthetically timeless exterior design with a layout found typically on much larger yachts. From the voluminous salon with dining for 10 and a forward bar, she has a commercial grade galley (with starboard walkaround access) and features an on-deck master stateroom forward with a sunken bath complete with jacuzzi tub. The interior is tastefully finished with a bird's-eye maples and lacquered finish. The lower accommodations include an office which converts to a guest stateroom, sharing a bath with another guest stateroom and two other staterooms aft (one king w/converts to twins, and a queen) both with ensuite baths. Forward on the lower level are the crew quarter with a private captain's stateroom and lounge. Forward of the galley is a stairway up to the raised pilothouse and then to an expansive flybridge area, complete with a shady settee, Jacuzzi tub and plenty of room for water toys and lounging. Note the aft control station. Below, a soft-enclosed and covered aft deck area leads to walkaround decks and a large cockpit. "Marazul" was completely refitted and refurbished during the latter part of 2007 and early 2008. She boasts new Awlgrip paint, a fresh bottom, a refinished interior and many new options to make her a modern, ocean-going yacht that can start cruising immediately. Yachts with so many desirable features and capabilities are extremely rare and hard to find. Check out the photos and register or contact Andy Kniffin - , 954-889-7330 to get more details!

## Basic Information

---

**Category:** cruiser

**Sub Category:** Long Range Cruiser

**Model Year:** 1986

**Year Built:** 1986

**Country:** United States

## Dimensions

---

**LOA:** 98' (29.87mm)

**Beam:** 24

**Max Draft:** 6' 2" (1.88mm)

---

## Speed, Capacities and Weight

---

**Cruise Speed:** 10 Knots Kts. (12 MPH)

**Cruise Speed Range:** 3000

**Holding Tank:** 300 Gal Gallons

**Fuel Capacity:** 8900 Gal Gallons

---

## Accommodations

---

**Total Cabins:** 5

**Total Berths:** 6

**Sleeps:** 10

**Total Heads:** 5

**Crew Cabin:** 6

**Crew Berths:** 5

**Crew Heads:** 2

---

## Hull and Deck Information

---

**Hull Material:** Aluminum

**Deck Material:** Aluminum

**Hull Configuration:** Full Displacement

**Hull Color:** White

---

## Engine Information

---

**Engines:** 2

**Manufacturer:** Caterpillar

**Engine Type:** Inboard

**Fuel Type:** Diesel

# PHOTOS

**Salon**



**Salon fwd**



**Entertainment center**



**Galley**



**Master on-deck stateroom**



**Master Bath**



**Guest stateroom**



**Guest Bath 2**



**Guest stateroom 2**



**Office/stateroom**



**Guest Bath 1**



**Crew berth**



**Crew settee**



**Pilothouse**



**Flybridge settee**



**Flybridge settee**





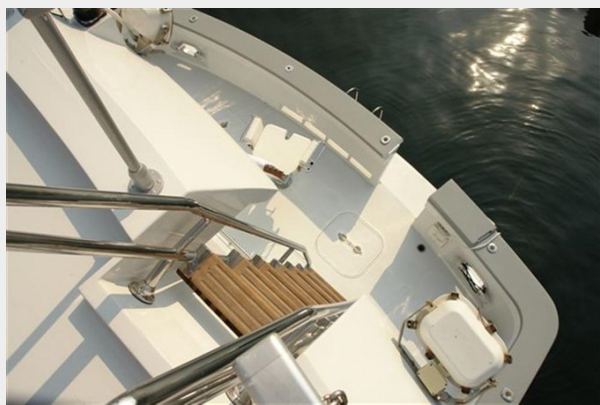
**Flybridge fwd view**



**Jacuzzi**



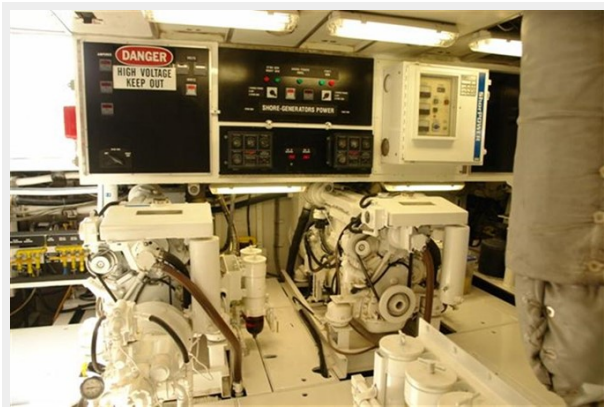
**Cockpit**



**Fore deck view**



**Gensets**



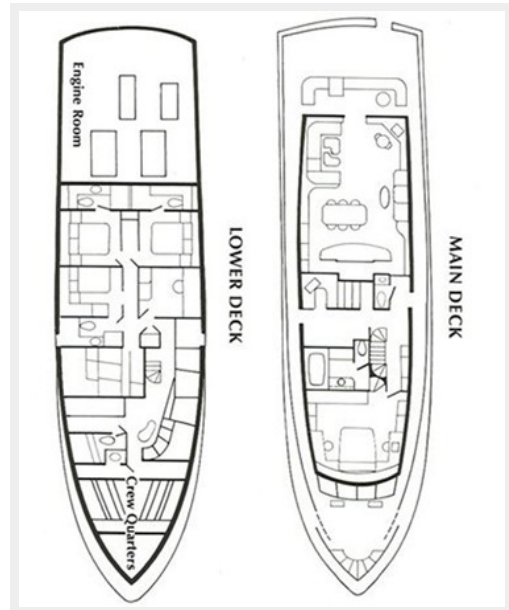
**Engine Room**



### Profile



### Layout



# CONTACTS

---

Andrey Shestakov, leading yacht broker of the sales department of Shestakov Yacht Sales Inc. Shestakov Yacht Sales Inc., the official representative of the Miami/Fort Lauderdale FL headquarters.

## Contact details

---

Email: [andrey@shestakovyachtsales.com](mailto:andrey@shestakovyachtsales.com)

Web: [shestakovyachtsales.com/en/](http://shestakovyachtsales.com/en/)

## Telephones

---

USA: +1(954)274-4435

## Office hours

---

Monday – Saturday: **9:00 - 21:00** EDT

Sunday: **closed**

## Address

---



Harbour Towne Marina, 850 NE 3rd St,  
STE 213, Dania, FL 33004