

SHANE — OVERMARINE - MANGUSTA



Builder: OVERMARINE - MANGUSTA

Year Built: 1999

Model: Motor Yacht

Price: PRICE ON APPLICATION

Location: France

LOA: 101' 11" (31.04m)

Beam: 21' 10" (6.65m)

Max Draft: 5' 0" (1.50m)

Cruise Speed: 34 Kts. (39 MPH)

Our experienced yacht broker, Andrey Shestakov, will help you choose and buy a yacht that best suits your needs **Shane — OVERMARINE - MANGUSTA** from our catalogue. Presently, at Shestakov Yacht Sales Inc., we have a wide variety of yachts available on our sale's list. We also work in close contact with all the big yacht manufacturers from all over the world.

If you would like to buy a yacht **Shane — OVERMARINE - MANGUSTA** or would like help answering any questions concerning purchasing, selling or chartering a yacht, please call **+1(954)274-4435**

TABLE OF CONTENTS

TABLE OF CONTENTS	2
SPECIFICATIONS	3
Overview	3
Basic Information	3
Dimensions	3
Speed, Capacities and Weight	3
Accommodations	3
Hull and Deck Information	4
Engine Information	4
DETAILED INFORMATION	5
Features	5
Accommodations	5
Galley	5
Saloon	5
Engine /Mechanical Equipment	5
Navigational Equipment	6
Deck Equipment	6
Remarks	6
Exclusions	6
Disclaimer	6
PHOTOS	7
Interior	9
CONTACTS	10
Contact details	10
Telephones	10
Office hours	10
Address	10

SPECIFICATIONS

Overview

GRP fast motor yacht built in 1998 (launched 1999) by Overmarine SPA (Italy). Naval architect and interior design: Rodriguez. 4 double cabins + crew. Dim.: 31.04 (27.85) x 6.65 x 3,35 m. Net tonnage: 43 t. . 2x 2250 hp MTU engines (1380 running hours - Sept. 2007). 34 kts maximum speed. Watermaker. Air conditioning. Classification: Bureau Veritas I 3/3 E.

Basic Information

Category: Motor Yacht

Model Year: 1999

Year Built: 1999

Country: France

Fly Bridge: Yes

Cockpit: Yes

Dimensions

LOA: 101' 11" (31.04m)

Beam: 21' 10" (6.65m)

Max Draft: 5' 0" (1.50m)

Speed, Capacities and Weight

Cruise Speed: 34 Kts. (39 MPH)

Accommodations

Total Cabins: 4

Total Berths: 9

Sleeps: 1

Total Heads: 1

Crew Cabin: 2

Crew Berths: 4

Crew Sleeps: 1

Crew Heads: 1

Hull and Deck Information

Hull Material: GRP

Engine Information

Engines: 2

Manufacturer: MTU

Engine Type: Inboard

Fuel Type: Diesel

DETAILED INFORMATION

Features

GRP fast motor yacht built in 1998 (launched 1999) by Overmarine SPA (Italy). Naval architect and interior design: Rodriguez. 4 double cabins + crew.

Accommodations

Accommodation for 8/9 guests in 4 cabins. Master cabin located on lower deck. Double bed with ensuite bathroom. Walk-in wardrobe. VIP cabin forward with double bed and ensuite facilities. Double guest cabin (stb side): double bed and ensuite bathroom. Twin guest cabin (port side): extra pullman bed. Each cabin has its own television and sound system. Main saloon (forward of the main deck). U-shaped sofa and 2 coffee tables. Forward of this area: large sofa with massive flat screen TV (linked to Sea Tell Inc System). Galley (located aft of the main saloon): 2 Fridgit fridges, 2 frigit drinks fridges, 2 frigit freezers. Sauter 4 rings induction plate with Gaggenau oven. Miele microwave. Zanussi dishwasher. Miele extractor fan. Crew mess (located aft of the galley). Deck saloon (can be open or closed by transparent covers). Two facing seating areas with coffee tables and dining table (8 guests). Bar area with icemaker, sink and fridge. Crew: 2 twin cabins with own facilities (toilet/shower). Miele washing machine and dryer. Day head located forward of the main saloon to port side.

Galley

Saloon

Engine /Mechanical Equipment

- 2x 2250 hp MTU engines (1380 running hours - 09/2007). 2x 30 kW Kohler generators. Port: 2992 running hours. Starboard: 2735 running hours. Transmission: ZF VW. Propulsion: KAMEWA waterjets. Fuel capacity: 13.300 l. in 2 tanks. Water capacity: 1300 l (1 tank). Idromar watermaker producing 1300 lph. (needs upgrade). Sewage (Hamman Supermini 220 v macerator with holding tank).
- Speed: 34 kts maximum, 28 kts cruising. Bowthruster: BCS 45 hp 4 banks of gel batteries. 600 ah service batteries. Dolphin battery charger. 2x 24V 80 A. Yanmar diesel pump fire system.

- BCS 24 v hydraulic powerpack for passerelle, garage door and bathing ladder.

Navigational Equipment

Robertson AP9 Mk III autopilot Furuno 93 nm radar Simrad CX 44 chart plotter. B&G depth sounder. Furuno GP32 GPS Furuno + Skanti VHF Furuno Inmarsat B&G Hydra 2000 wind set. Navtex NX 500 weather fax GMDSS approved Skanti VHF

Deck Equipment

Remarks

Bureau Veritas I 3/3 E.

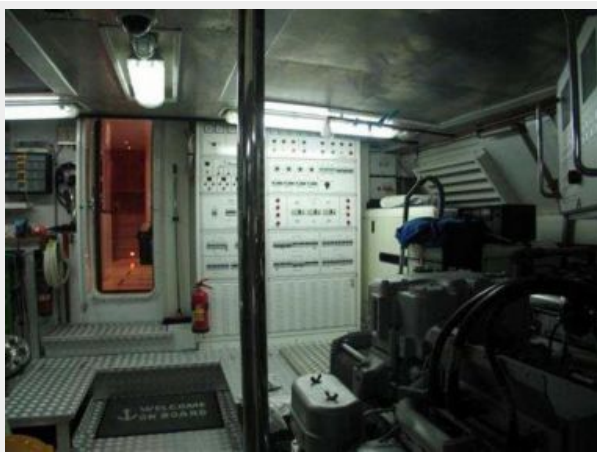
Exclusions

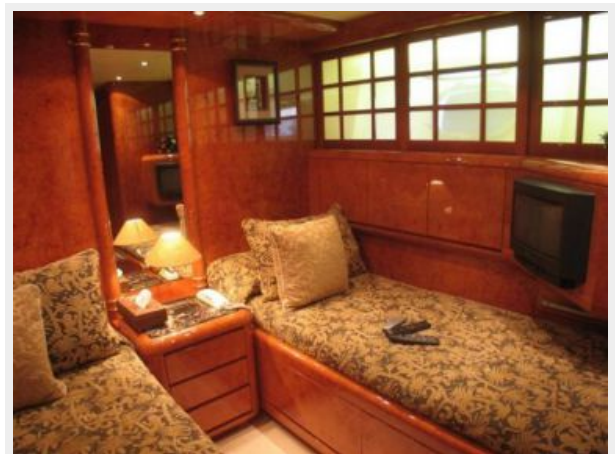
Owner's personal belongings.

Disclaimer

The Company offers the details of this vessel or yacht in good faith but cannot guarantee or warrant the accuracy of this information nor warrant the condition of the vessel. A buyer should instruct his representatives, agents, or his surveyors, to investigate such details as the buyer desires validated. This vessel or yacht is offered subject to prior sale, price change, or withdrawal without notice.

PHOTOS





Interior



CONTACTS

Andrey Shestakov, leading yacht broker of the sales department of Shestakov Yacht Sales Inc. Shestakov Yacht Sales Inc., the official representative of the Miami/Fort Lauderdale FL headquarters.

Contact details

Email: andrey@shestakovyachtsales.com

Web: shestakovyachtsales.com/en/

Telephones

USA: +1(954)274-4435

Office hours

Monday – Saturday: **9:00 - 21:00** EDT

Sunday: **closed**

Address



Harbour Towne Marina, 850 NE 3rd St,
STE 213, Dania, FL 33004