

C-REVENGE — SOUTHERN COMPOSITE YACHTS



Builder:
SOUTHERN COMPOSITE YACHTS

Year Built: 2001

Model: Sport Fisherman

Price: PRICE ON APPLICATION

Location: United States

LOA: 50' 0" (15.24m)

Beam: 17' 7" (5.36m)

Max Draft: 4' 0" (1.22m)

Cruise Speed: 28 Kts. (32 MPH)

Max Speed: 35 Kts. (40 MPH)

Our experienced yacht broker, Andrey Shestakov, will help you choose and buy a yacht that best suits your needs C-REVENGE — SOUTHERN COMPOSITE YACHTS from our catalogue. Presently, at Shestakov Yacht Sales Inc., we have a wide variety of yachts available on our sale's list. We also work in close contact with all the big yacht manufacturers from all over the world.

If you would like to buy a yacht C-REVENGE — SOUTHERN COMPOSITE YACHTS or would like help answering any questions concerning purchasing, selling or chartering a yacht, please call +1(954)274-4435

TABLE OF CONTENTS

TABLE OF CONTENTS	2
SPECIFICATIONS	4
Overview	4
Basic Information	4
Dimensions	4
Speed, Capacities and Weight	4
Accommodations	5
Hull and Deck Information	5
Engine Information	5
DETAILED INFORMATION	6
Advertising Write Up	6
Vessel Walkthrough	6
Salon	6
Galley	7
Dinette	7
Stateroom - Port	7
Head - Port	7
Stateroom - Starboard	7
Head - Starboard	8
Electrical System	8
Mechanical	8
Electronics and Helm Station	8
Flybridge	9
Cockpit	9
Deck	9
Fishing Equipment	9
Broker's Comments	10
Exclusions	10

Exclusions	10
Disclaimer	10
PHOTOS	11
Dinette	11
Head Port	12
Head Starboard	13
Port	13
Starboard	13
Deck	15
Rear View	15
CONTACTS	16
Contact details	16
Telephones	16
Office hours	16
Address	16

SPECIFICATIONS

Overview

2001 50' Catamaran Custom Sportfishing boat, 28 knot cruise, Series 60 Detroit Diesels 700 HP each, two staterooms, two heads, huge cockpit, dry ride, outstanding fuel economy, wide beam and excellent sea keeping qualities. Do not miss an opportunity to preview "C-Revenge" and see what the serious fisherman dream about.

Basic Information

Category: Sport Fisherman

Sub Category: Convertible

Model Year: 2001

Year Built: 2001

Country: United States

Coast Guard #: 1121883

Fly Bridge: Yes

Dimensions

LOA: 50' 0" (15.24m)

Beam: 17' 7" (5.36m)

Max Draft: 4' 0" (1.22m)

Speed, Capacities and Weight

Cruise Speed: 28 Kts. (32 MPH)

Max Speed: 35 Kts. (40 MPH)

Water Capacity: 250 Gallons

Fuel Capacity: 720 Gallons

Accommodations

Total Berths: 1

Sleeps: 1

Total Heads: 1

Crew Berths: 1

Crew Sleeps: 1

Crew Heads: 1

Hull and Deck Information

Hull Material: Fiberglass

Engine Information

Engines: 2

Manufacturer: Detroit Diesel

Model: Series 60

Engine Type: Inboard

Fuel Type: Diesel

DETAILED INFORMATION

Advertising Write Up

2001 50' Catamaran Custom Sportfishing boat, 28 knot cruise, Series 60 Detroit Diesels 700 HP each, two staterooms, two heads, huge cockpit and excellent sea keeping qualities. Do not miss an opportunity to preview "C-Revenge" and see what the serious fisherman dream about.

OWNER WILL CONSIDER ALL TRADES!!! BRING ALL OFFERS!!!

Vessel Walkthrough

OWNER WILL CONSIDER ALL TRADES !!! BRING ALL OFFERS !!!

C-REVENGE IS A RARE CATAMARAN CONVERTIBLE DESIGNED FOR THE DEDICATED SPORTFISHING ENTHUSIAST OR CHARTER OPERATION. From the huge cockpit you enter the salon with dinette on the port side and sofa seating to starboard. The salon includes entertainment systems, dinette, teak and holly floor, wet bar, chart table and ice maker. Forward on the same deck is the galley. There are two separate companionways one to port and one to starboard. The starboard companionway leads forward to stateroom number one with queen berth and private head. Turning aft from the companionway is large rod storage, tool room and access to engine room. The port side companionway and steps lead down to the second stateroom and private head. Once again proceeding aft you find the very large rod storage, tool room and engine room access.

Salon

- Teak and holly floor
- Bose surround sound
- Custom rod locker
- Large dinette
- Sofa
- Chart table
- Big Bay flat screen TV
- Samsung DVD / CD player
- U-line ice maker
- Throw pillows
- Air conditioning
- Accent lighting

Galley

- Corian counters
- Sub-zero refrigerator
- Sub-zero freezer drawer
- Sink with faucet
- Amana microwave
- Princess (3) burner cook top
- Teak and holly floor
- Mr. Coffee
- Cabinets

Dinette

- Huge U-shaped seating with table
- Storage
- Teak and holly floor

Stateroom - Port

- Queen berth
- Drawers
- Hanging lockers
- Storage
- Samsung flat screen TV
- Teak and holly floor
- Throw pillows
- Shelves
- Large rod storage in companionway
- Private ensuite head
- Air conditioning

Head - Port

- Sink with faucet
- Corain counter
- Large shower
- Head
- Teak and holly floor

Stateroom - Starboard

- Queen berth
- Drawers
- Hanging lockers
- Throw pillows
- Shelves

- Storage
- Samsung flat screen TV
- Teak and holly floor
- Large rod storage in companionway
- Private ensuite head
- Air conditioning

Head - Starboard

- Sink with faucet
- Corain counter
- Large shower
- Head
- Teak and holly floor

Electrical System

- Northern Lights 16kW generator
- Battery charger
- Shore power
- Spreader lights
- Accent lighting
- Battery parallel switch

Mechanical

- - Twin Series 60 Detroit Diesel 700 HP (1600 hours)
 - Marine Air A/C (four systems)
 - Bilge pumps (4)
 - Bilge blowers
 - Automatic fire system
 - Racor fuel filters
 - Oil change system
 - Dripless shaft seals
 - Tool room (port and starboard)

Electronics and Helm Station

- Robertson AP-20 autopilot
- (2) ACR Spotlights with remote pads
- (2) Icom M-602 VHF radios
- Simrad bottom sounder with large screen
- Simrad chart plotter / GPS with large screen
- DD electronic engine displays
- Simrad radar with large screen
- Custom helm pod
- Samsung screen
- Link 2000
- ESV stereo with four speakers
- XM Radio

Flybridge

- (3) Release Marine helm chairs
- Chair covers
- Helm pod
- Navigation station
- Huge bench seating
- Rocket launcher
- Hand rails
- Manual teaser reels
- Spreader lights
- Chart lighting
- Three side enclosure

Cockpit

- Transom door
- Large refrigerated fish box
- Live well
- Bait prep area
- Gaff and boat hook storage
- Salt water wash down
- Fresh water wash down
- Molded steps to flybridge (port and starboard)
- Tackle center
- Sink
- Electric grill
- Turdra freezer
- Release Marine fighting chair
- Simrad IS 15 screens
- VHF
- Generator start/stop
- Storage
- Rod holders
- Huge cockpit for 50' boat

Deck

- Danforth anchor
- Bow pulpit
- Bow rails
- Emergency life raft
- Large fore deck

Fishing Equipment

- Transom door
- Large refrigerated fish box
- Live well
- Bait prep area
- Gaff and boat hook
- Storage
- Turdra freezer
- Release Marine fighting chair
- Rod holders
- Huge cockpit for 50' boat
- Rupp outriggers
- Custom rod storage

- Tackle center
- Sink
- Tuna tubes
- Rocket launcher on flybridge

Broker's Comments

C-Revenge provides a rare opportunity to find a 50' Catamaran sportfishing boat. With a 28 knot cruise, huge cockpit, dry ride, outstanding fuel economy, wide beam, all the fishing bells and whistles, great accommodations and catamaran sea keeping qualities she is ready for her new owners to fish this season. A perfect private sport fishing vessel or an outstanding vessel that could be used for charter.

Exclusions

Owner's personal items and fishing tackle.

Exclusions

Owner's personal belongings.

Disclaimer

The Company offers the details of this vessel or yacht in good faith but cannot guarantee or warrant the accuracy of this information nor warrant the condition of the vessel. A buyer should instruct his representatives, agents, or his surveyors, to investigate such details as the buyer desires validated. This vessel or yacht is offered subject to prior sale, price change, or withdrawal without notice.

PHOTOS



Dinette

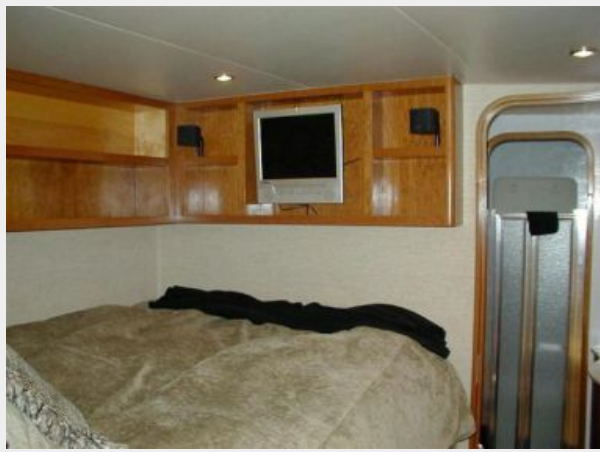




Head Port



Head Starboard



Port

Starboard





Deck



Rear View



CONTACTS

Andrey Shestakov, leading yacht broker of the sales department of Shestakov Yacht Sales Inc. Shestakov Yacht Sales Inc., the official representative of the Miami/Fort Lauderdale FL headquarters.

Contact details

Email: andrey@shestakovyachtsales.com

Web: shestakovyachtsales.com/en/

Telephones

USA: +1(954)274-4435

Office hours

Monday – Saturday: **9:00 - 21:00** EDT

Sunday: **closed**

Address



Harbour Towne Marina, 850 NE 3rd St,
STE 213, Dania, FL 33004