

## MR. VICTOR — CRAIG BLACKWELL



**Builder:** CRAIG BLACKWELL

**Year Built:** 2004

**Model:** Sport Fisherman

**Price:** PRICE ON APPLICATION

**Location:** United States

**LOA:** 36' 0" (10.97m)

**Beam:** 12' 0" (3.66m)

**Min Draft:** 3' 4" (1.02m)

**Cruise Speed:** 28 Kts. (32 MPH)

Our experienced yacht broker, Andrey Shestakov, will help you choose and buy a yacht that best suits your needs **Mr. Victor — CRAIG BLACKWELL** from our catalogue. Presently, at Shestakov Yacht Sales Inc., we have a wide variety of yachts available on our sale's list. We also work in close contact with all the big yacht manufacturers from all over the world.

If you would like to buy a yacht **Mr. Victor — CRAIG BLACKWELL** or would like help answering any questions concerning purchasing, selling or chartering a yacht, please call **+1(954)274-4435**

---

# TABLE OF CONTENTS

---

TABLE OF CONTENTS	2
SPECIFICATIONS	3
Basic Information	3
Dimensions	3
Speed, Capacities and Weight	3
Accommodations	3
Hull and Deck Information	3
Engine Information	4
DETAILED INFORMATION	5
Accommodations	5
Entertainment Center	5
Galley	5
Fishing Equipment	5
Electronics and Navigational Equipment	5
Engine /Mechanical Equipment	6
Electrical System	6
Deck Equipment	6
Remarks	6
Exclusions	6
Disclaimer	6
PHOTOS	7
CONTACTS	10
Contact details	10
Telephones	10
Office hours	10
Address	10

---

# SPECIFICATIONS

---

## Basic Information

---

**Category:** Sport Fisherman

**Sub Category:** Express

**Model Year:** 2004

**Year Built:** 2004

**Country:** United States

## Dimensions

---

**LOA:** 36' 0" (10.97m)

**Beam:** 12' 0" (3.66m)

**Min Draft:** 3' 4" (1.02m)

## Speed, Capacities and Weight

---

**Cruise Speed:** 28 Kts. (32 MPH)

**Water Capacity:** 200 Gallons

**Fuel Capacity:** 400 Gallons

## Accommodations

---

**Total Berths:** 1

**Sleeps:** 1

**Total Heads:** 1

**Crew Berths:** 1

**Crew Sleeps:** 1

**Crew Heads:** 1

## Hull and Deck Information

---

**Hull Material:** Fiberglass

---

## Engine Information

---

**Engines:** 2

**Manufacturer:** Caterpillar

**Model:** 3126B

**Engine Type:** Inboard

**Fuel Type:** Diesel

---

## DETAILED INFORMATION

---

---

### Accommodations

---

The layout of this boat is typical for what we have learned to be the best of fish boats. The cockpit is spacious and uncluttered with the fishbox mounted in the transom covering board. The full size fighting chair is easy to navigate around and the bait prep center and drinkbox are only a step away. One step up to the helm deck with a centerline helm LOADED with state of the art electronics. Seating port and starboard for comfort on the way out and back from the fishing grounds. The entry to the cabin is to starboard and the interior is finished in varnished teak. The joiner work is beautiful and the layout is very practical. The head is at the bottom of the stairs, galley to port and the dinette is forward. (The dinette seat is a molded fiberglass water tank giving the boat a 200 gallon fresh water supply.) Teak and holly soles, Cantilupi lighting and ultraleather seating make the interior rich and warm.

---

### Entertainment Center

---

SONY 24" LCD TV SONY DVD/VHS Monster power supply for TV Voice alarm system throughout Clarion AM/FM/CD w 8 Bose speakers

---

### Galley

---

Corian counter tops Sharp microwave Norcold 110/12v refrigerator/freezer Abundant cabinet space Stainless sink Hide-a-way trash can

---

### Fishing Equipment

---

Pipewelders tower w/hardtop Single lever controls in tower Caterpillar elec. displays in tower Rupp center rigger 22 rod holders Raw water washdown Stainless bait prep center w/RW wash Fiberglass buggy top Rupp 34' 2X outriggers Murray Bros. fighting chair w/rocket launcher and bait tray Stainless lined fishbox

---

### Electronics and Navigational Equipment

---

**Lower helm:** Furuno NavNet 72 Mile/12kw radar Garmin 740 GPS chartplotter ICOM 602 VHF w/remote speaker ICOM 802 SSB w/remote speaker ACR spotlight

**Tower:** ICOM 502 VHF Furuno RD30 remote GPS display Furuno FCV1100L color depth (3kw) Simrad AP22 autopilot ICOM 502 VHF w/remote speaker Furuno RD30 remote temp/depth/speed Trim tab indicators Remote Clarion stereo control Simrad AP22 ACR spotlight control

---

## Engine /Mechanical Equipment

---

Single lever electronic controls Airconditioned helm Racor fuel filters Dripless shaft seals Rerso oil change system Bronze seacocks Raritan Atlantis head system 4 auto bilge pumps Marineair reverse cycle A/C Hynautic steering Bennett trim tabs Fireboy FE241 auto system Engine room exhaust fans 5Gal Raritan hot water Raw water washdown Shower sump 4 Blade Nibral wheels

---

## Electrical System

---

8kw Northern Lights generator w/1800 hrs 50 Amp shore cord 12v engine room lights 2 24v C Power battery chargers Underwater lights in stern Volt/amp gauges on panel Centek gen. muffler system 50 Amp shore service 110v engine room lights 1 50 12v Battery charger 4 built-in spreader lights Cockpit rope lighting Battery switches Separate breaker panel for electronics Blue courtesy lights Interior rope lighting

---

## Deck Equipment

---

Danforth anchor w/chain and rode Teak helm deck sole Teak toe rails 4 Flush mounted spreader lights Padded cockpit coaming Bowmar deck hatch Fresh water wash down in tower Teak cockpit sole Teak covering boards Murray Bros helm chair Flush mount nav lights Stainless steel drink box (insulated) Extra drink box on helm deck Armstrong swim ladder Armstrong transom bracket

---

## Remarks

---

"Mr. Victor" is built on a great Carolina hull providing a great ride, superior seakeeping abilities and great fuel economy. She is loaded with every option and convenience imaginable and is ready to go at a moments notice. Fresh bottom, motivated seller, recent hull paint, recent Macrelon enclosure

---

## Exclusions

---

Owner's personal belongings.

---

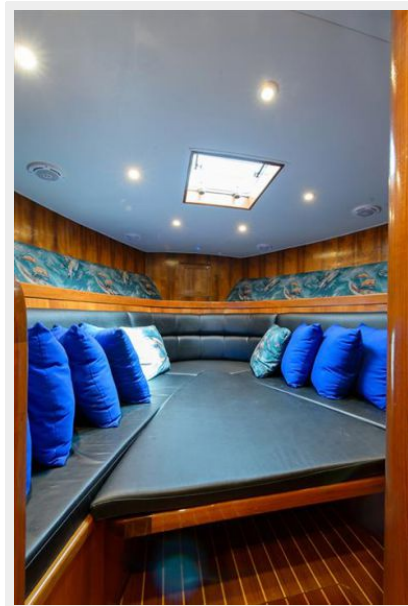
## Disclaimer

---

The Company offers the details of this vessel or yacht in good faith but cannot guarantee or warrant the accuracy of this information nor warrant the condition of the vessel. A buyer should instruct his representatives, agents, or his surveyors, to investigate such details as the buyer desires validated. This vessel or yacht is offered subject to prior sale, price change, or withdrawal without notice.

# PHOTOS









---

# CONTACTS

---

Andrey Shestakov, leading yacht broker of the sales department of Shestakov Yacht Sales Inc. Shestakov Yacht Sales Inc., the official representative of the Miami/Fort Lauderdale FL headquarters.

---

## Contact details

---

Email: [andrey@shestakovyachtsales.com](mailto:andrey@shestakovyachtsales.com)

Web: [shestakovyachtsales.com/en/](http://shestakovyachtsales.com/en/)

---

## Telephones

---

USA: +1(954)274-4435

---

## Office hours

---

Monday – Saturday: **9:00 - 21:00** EDT

Sunday: **closed**

---

## Address

---



Harbour Towne Marina, 850 NE 3rd St,  
STE 213, Dania, FL 33004