

PRINCIPE PERFEITO — CHANTIER NAVAL DE CAEN



Builder: [CHANTIER NAVAL DE CAEN](#)

Year Built: 1943

Model: Tallship

Price: PRICE ON APPLICATION

Location: Portugal

LOA: 136' 2" (41.50m)

Beam: 24' 8" (7.50m)

Min Draft: 12' 10" (3.90m)

Cruise Speed: 7 Kts. (8 MPH)

Max Speed: 8 Kts. (9 MPH)

Our experienced yacht broker, Andrey Shestakov, will help you choose and buy a yacht that best suits your needs **PRINCIPE PERFEITO — CHANTIER NAVAL DE CAEN** from our catalogue. Presently, at Shestakov Yacht Sales Inc., we have a wide variety of yachts available on our sale's list. We also work in close contact with all the big yacht manufacturers from all over the world.

If you would like to buy a yacht **PRINCIPE PERFEITO — CHANTIER NAVAL DE CAEN** or would like help answering any questions concerning purchasing, selling or chartering a yacht, please call **+1(954)274-4435**

TABLE OF CONTENTS

TABLE OF CONTENTS	2
SPECIFICATIONS	3
Basic Information	3
Dimensions	3
Speed, Capacities and Weight	3
Accommodations	3
Hull and Deck Information	4
Engine Information	4
DETAILED INFORMATION	5
Accommodations	5
Sails and Rigging	5
Cockpit and Deck	5
Electronics and Navigational Equipment	5
Engine /Mechanical Equipment	5
Comfort	5
Tanks	6
Remarks	6
Exclusions	6
Disclaimer	6
PHOTOS	7
CONTACTS	11
Contact details	11
Telephones	11
Office hours	11
Address	11

SPECIFICATIONS

Basic Information

Category: Tallship

Model Year: 1943

Year Built: 1943

Refit Year: 2006

Refit Type: Entirely rebuilt from the
mechanics, deck, rigging to the interior

Country: Portugal

Cockpit: Yes

Dimensions

LOA: 136' 2" (41.50m)

Beam: 24' 8" (7.50m)

Min Draft: 12' 10" (3.90m)

Speed, Capacities and Weight

Cruise Speed: 7 Kts. (8 MPH)

Cruise Speed RPM: 1250 Kts.

Cruise Speed Range: 3250

Max Speed: 8 Kts. (9 MPH)

Max Speed RPM: 1800 Kts.

Gross Tonnage: 299 Pounds

Water Capacity: 2113.376416 Gallons

Holding Tank: 792.516156 Gallons

Fuel Capacity: 2641.72052 Gallons

Accommodations

Total Cabins: 5

Total Berths: 5

Sleeps: 10

Total Heads: 4

Crew Cabin: 1

Crew Berths: 2

Crew Sleeps: 2

Crew Heads: 1

Hull and Deck Information

Hull Material: Steel

Deck Material: Steel

Hull Color: Blue with Yellow stripe

Engine Information

Engines: 1

Manufacturer: Caterpillar

Model: 3408

Engine Type: Inboard

Fuel Type: Diesel

DETAILED INFORMATION

Accommodations

Forward lounge : 77 m²Aft lounge : 68 m²Reception : 25 m²Guest cabins : 50 m²
totalCrew area : 25 m²**CHART TABLE**In the wheel house above the guest
cabins **SALOON**One lounge forward with a dancing floor and settees.One lounge aft with a bar
and settees. **CABINS**5 double cabins in the aft section (not finished) **SHOWER**
ROOM/HEAD05 **GALLEY**Professionally equipped **CREW CABIN**Aft under the guest cabins

Sails and Rigging

LEE SAILS set of sails - all in very good condition :84 m² fore sail95 m² main sail90 m² mizzen
main sail35 m² flying jib33 m² outer jib32 m² inner jib32 m² staysail22 m² main staysailSPARS :
steel masts and booms

Cockpit and Deck

Aft wheel houseMiddle deckCentral deck house with reception and access by stairs to both
loungesForward deck

Electronics and Navigational Equipment

instruments** : NASA CLIPPERsounder** : NASA CLIPPER***self steering** : ROBERTSON
APE***gyro compass** : SPERRY***VHF radio** : NAVICO RT 450 DSC***VHF radio** : 2 sets
NAVICO AXIS 30 of portable GMDSS***weather fax** : NAVTEX - ICS NAV***GPS** : GARMIN
128***radar** : RAY MARINE R80 + CRT 10" display & 4 KW 24" antenna***Ebirp** : MC MURDO
E3 - 406 Mhz***sart** : MC MURDO SA

Engine /Mechanical Equipment

MAIN ENGINE :470 HP CATERPILLAR 3408 B N° 99U07896***Performances** : 7,5 knots at
1.800 rd / m 6,5 knots at 1.250 rd /m***Consumption** : 20 litres / hour at 6,5 knots including
generator consumption***Range** : 3.250 miles**GENERATOR** 25 Kva BOLINDER VOLVA

Comfort

Boiler : electrical one + diesel electrical one**Water maker** : no**Refrigerator** : 2**Deep freezer**
: 1**Heater** : Central heating with diesel electrical (not working)

Tanks

Fuel: 10.000 litres **Water:** 8.000 litres **Black water:** 3.000 litres

Remarks

This ex fishing trawler has been converted into a successful charter vessel with a capacity of taking on day coastal cruising up to 200 guests with 5 crew (Captain and 4 crew) plus 5 interior crew (Chef, stewardess and waiters). She is a go anywhere vessel with a big range capacity. She is solid and seaworthy. She could be used to go around the world for a youth association as sailing school or nature youngsters activity. **Historical/prize-list:** Originally French fishing trawler the used for cargo.Sailed in Chile for a while.Bought in 2001 by the present owner in Sweden. Then converted in a day charter boat.Refit undertaken in Sweden of the steel and engine, then interior and other works completed in Portugal.First sailing since converted in 2006.Summer 2008, PRINCIPE PERFEITO will take part in a tall ships race between UK, Portugal and Madeira. **Safety/classification:** Portuguese commercial registered now.Certified now by IPTM - Institute Portugal Transport MarineVeritas certified until 1998.

Exclusions

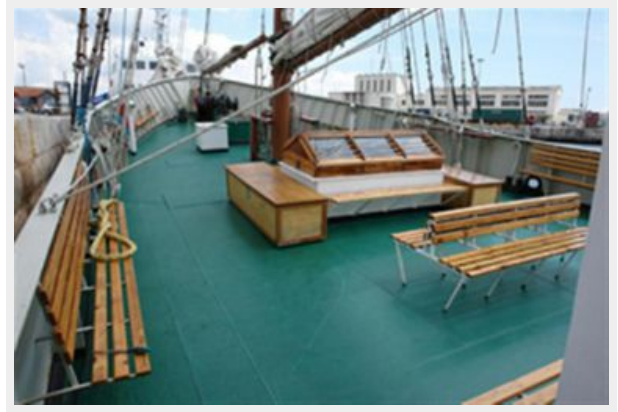
Owner's personal belongings.

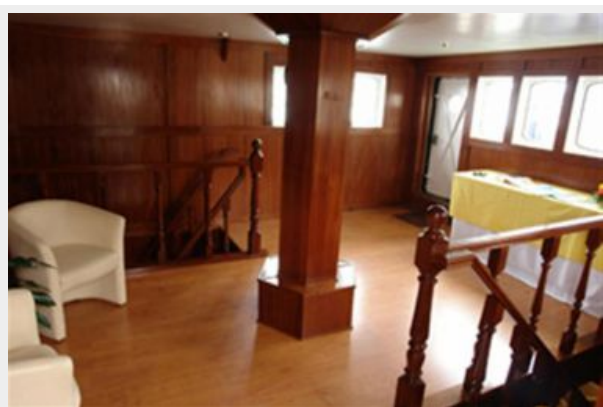
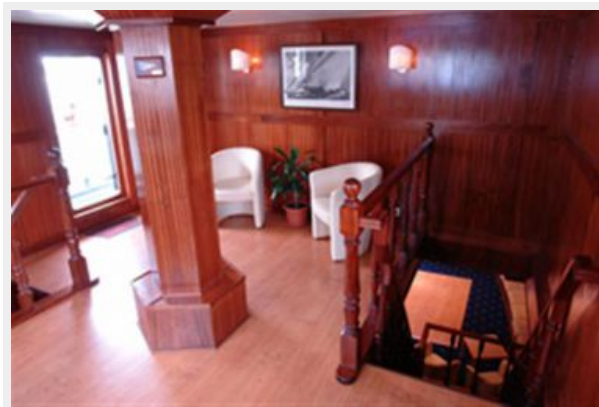
Disclaimer

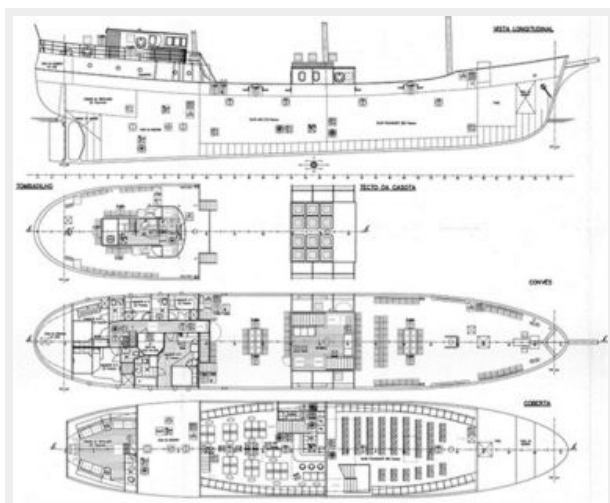
The Company offers the details of this vessel or yacht in good faith but cannot guarantee or warrant the accuracy of this information nor warrant the condition of the vessel. A buyer should instruct his representatives, agents, or his surveyors, to investigate such details as the buyer desires validated. This vessel or yacht is offered subject to prior sale, price change, or withdrawal without notice.

PHOTOS









CONTACTS

Andrey Shestakov, leading yacht broker of the sales department of Shestakov Yacht Sales Inc. Shestakov Yacht Sales Inc., the official representative of the Miami/Fort Lauderdale FL headquarters.

Contact details

Email: andrey@shestakovyachtsales.com

Web: shestakovyachtsales.com/en/

Telephones

USA: +1(954)274-4435

Office hours

Monday – Saturday: **9:00 - 21:00** EDT

Sunday: **closed**

Address



Harbour Towne Marina, 850 NE 3rd St,
STE 213, Dania, FL 33004