

NEWPORT STAR — CUSTOM



Builder: CUSTOM

Year Built: 1991

Model: Cruising Sailboat

Price: PRICE ON APPLICATION

Location: Greece

LOA: 60' 0" (18.29m)

Beam: 16' 9" (5.11m)

Min Draft: 7' 6" (2.29m)

Our experienced yacht broker, Andrey Shestakov, will help you choose and buy a yacht that best suits your needs **NEWPORT STAR — CUSTOM** from our catalogue. Presently, at Shestakov Yacht Sales Inc., we have a wide variety of yachts available on our sale's list. We also work in close contact with all the big yacht manufacturers from all over the world.

If you would like to buy a yacht **NEWPORT STAR — CUSTOM** or would like help answering any questions concerning purchasing, selling or chartering a yacht, please call **+1(954)274-4435**

TABLE OF CONTENTS

TABLE OF CONTENTS	2
SPECIFICATIONS	4
Overview	4
Basic Information	4
Dimensions	4
Speed, Capacities and Weight	4
Accommodations	4
Hull and Deck Information	5
Engine Information	5
DETAILED INFORMATION	6
Introduction	6
Broker's Comments	11
General	11
Mechanical	11
Hydraulics	12
Electrical	12
Batteries	12
Deck/Hull	13
Navigation/Communication	13
Facilities	14
Galley	16
Accommodation	16
Safety	17
Exclusions	18
Disclaimer	18
PHOTOS	19
CONTACTS	25
Contact details	25

Telephones	25
Office hours	25
Address	25

SPECIFICATIONS

Overview

A little super yacht. Very highly specced, and perfectly maintained. If you wanted a super yacht at 60ft, this is the yacht for you.

Basic Information

Category: Cruising Sailboat

Model Year: 1991

Year Built: 1991

Refit Year: 2004

Refit Type: Rebuild

Country: Greece

Cockpit: Yes

Dimensions

LOA: 60' 0" (18.29m)

Beam: 16' 9" (5.11m)

Min Draft: 7' 6" (2.29m)

Speed, Capacities and Weight

Displacement: 50706.32026 Pounds

Water Capacity: 264.172052 Gallons

Fuel Capacity: 264.172052 Gallons

Accommodations

Total Cabins: 3

Total Berths: 6

Sleeps: 6

Total Heads: 3

Crew Cabin: 1

Crew Berths: 2

Crew Sleeps: 2

Crew Heads: 1

Hull and Deck Information

Hull Material: GRP

Deck Material: Teak

Hull Designer: Bill Dixon

Engine Information

Engines: 1

Manufacturer: Ford

Model: Mermaid

Engine Type: Inboard

Fuel Type: Diesel

DETAILED INFORMATION

Introduction

Rigging:

- Hood system.

Sails:

- Main furling.
- Genoa furling.
- Staysail furling.
- Multi-purpose genoa.
- Spinnaker.

Deck & Safety:

Dinghy:

- 3.60m rib/steering.

Outboard:

- 25hp Yamaha & 5hp.

Life Jackets:

- Yes.

Fire Ext.:

- Yes.

Sun Awning:

- Yes.

Anchor:

- Bruce inox.
- Danforth (spare) and Delta in use.

Chain:

- 150m 1/2.

Windlass:

- Electric dual with chain meter.

Galley:

- Ceramic top and oven.
- 2 x Front loading refrigerators.
- Deep Freezer.

Others:

- Coffee maker.
- Shaker-mixer.
- Toaster.

- Espresso machine.
- Ice maker & crusher.

Accommodation:*Saloon:*

- Spacious saloon including galley.

Cabins/Berths:

- Master forward. En-suite.
- 2 x Double cabins aft. En-suite.

Crew Cabin:

- Forward twin berth. En-suite.

Navigation & Electronics:

- Log.
- Depth Sounder.
- Wind Instrument.
- Compass.
- Autopilot.
- VHF GMDSS.
- SSB.
- Radar-Marpa.
- GPS.

- Plotter and AIS.
- Navtex GMDSS.
- EPIRB.

Engine & Machinery:

Type:

- 1 x Ford Mermaid 135hp.

No. of Hours:

- 1,530hrs.

Range:

- 70 hrs x 8.0Av.SP=560nm.

Consumption:

- 15 lt PH.

Speed:

- 8 knots on 1700 rpm and 9/10 knots on 2000 rpm.

Service Batteries:

- 2 banks heavy duty 2 x 810 amp each (new 9/2006).

Steering:

- Hydraulic helm.

Generator:

- 21 kw & 6 kw.

Air Conditioning:

- 3 units tot. 60,000 BTU.

Watermaker:

- 200 l/h.

Tankage:

Fuel:

- 1,000 litres.

Water:

- 1,000 litres.

Generator (Fuel):

- 110 litres.

Drinking Water:

- 110 litres.

Holding Tanks:

- Grey and black

Broker's Comments

The yacht is one owner only since she was built. She has been excellently maintained and all parts which are used for repair or maintenance are original and of the most reputable brands. A great amount of money is spent every year in order to keep her in tip-top condition.

A condition survey was performed in May 2006 which is available upon request.

General

- Hull and Deck was AWLGRIP painted May 2005 deck re-rubbered. Insulation rubber on beam tops was renewed and floors were fitted with 10mlm sound insulation foam rubber

Sail Area:

- Main: 88 sq. m
- Genoa: 101 sq. m
- Staysail 38 sq. m
- M.P Genoa: 142 sq. m
- Spinnaker: 242 sq. m

Mechanical

- Main engine 135 (MERMAID / U.K.)
- Main Generator HFL 21 KVA
- Auxiliary Generator (6 KVA. Mastervolt - Whisper)
- New HALYARD exhaust systems fitted for generators separating water and fumes for silent operation
- Electrohydraulic, retractable bowthruster (RICHFIELD / U.K.) 16HP
- Hydraulic steering with joy stick for quick response & easy in-harbour manouvres steering

pump Overhauled 9/2007

- Electrohydraulic swimming ladder / gangway, with remote control (PIN CRAFT) all pipes renewed and hydraulic pump and cylinders overhauled (02/2008)
- Marine type Air Conditioning, hot / cold with 3 Separate Units installed totaling 60.000 BTU

Hydraulics

- Water Tank 1000 Lt.
- Holding Tank (Grey Water)
- Holding Tank (Black Water)
- Stainless Steel water Heater 60 Lt. - Serviced 2/2008 New heating element and thermostat SEAFRESH Desalinator 220 Lt. / Hr (British Navy suppliers) with U.V. Sterilization system New membranes Flitted 12/2005)
- All pumps for water, holding tanks (black and grey), bilges etc are double for safety and convenience plus hand operated pumps for emergency
- Two fresh water pumps - Dual head SHURFLO mod 4000 (new Dec 2006)

Electrical

- 12 V System Electrical panels (PHILIPPI / GERMANY) Electr. Panel completely reconstructed 6/2007
- Ceiling / berth lights halogen (BCM / ITALY)
- Lights, switches and plugs (TICINO / ITALY) gold plated
- All indicators on chart table by ITT
- 1 Inverter Mastervolt-sine 2KW with R/C from electrical panel
- 2 Battery chargers MASTERVOLT 80 Amp and 120 amp each with selection switch and isolators Generators one HFL 21 KVA and one MASTERVOL T Whisper 6 VA

Batteries

- Service 2 banks x 810 Amp each (new 4/2007) Engine battery 1x180 Amp and one battery for each Generator .Engine can start either from its battery or from service all batteries new in

4/2007 Service battery has automatic distilled.

- Water feeding system with easy accessible separate tank.

Deck/Hull

- Mast with three spreaders, twin black stripes and lights on spreaders for impressive mast illumination.
- Furling system (HOOD U.K.) mast was repainted (2/2006) with AWLGRIP and all standing and running rigging was renewed, all fittings inspected and either serviced or renewed
- Sails: Main, Genoa and Staysail (New2002) Also Spinnaker and Multipurpose Genoa
- Deck hardware. (HARKEN U.S.A.) Black anodised fittings
- Winches Black anodized HARKEN/USA all self tailing winches are oversized for easy handling of sails
- Sail cloth (square type, U.V. protected)
- Teak Deck. Hand-laid Burma teak initially 22m/m thick re-rubbered and sanded (July 2005) Electric windlass (LOFRANS -FALCON 1.5 KW)and cockpit control with electronic chain counter (New windlass fitted September 2006) - The 150 meters chain was galvanized in July 2005 - Windlass fitted also with twin electromagnetic switches for emergency situations Forward deck and aft deck wash with fresh water pressure pump
- Automatic fresh water anchor wash in the stemhead fitting
- Hull and deck painted with AWLGRIP April/May 2005
- Underwater parts treated with VERNICI VENEZIANI antiosmotic protection (3/2007)

Navigation/Communication

Chart Table:

- RAYTHEON ST80 SERIES Instruments
- Extra displays in cockpit with Analog Wind Direction and Close hauled indicators. (New 10/2006)
- Radar (JRC-JMC-51 04 48miles) and MARPA (new 3/2007)
- GPS-PLOTTER - AIS VDO (New 01/2007)

- S.S.B. SAILOR 250 Watts
- VHF Monitored in cockpit (SAILOR)
- Battery Load Scanner
- GMDSS VHF SAILOR monitored in the cockpit
- Mc Murdo EPIRB
- 3 Portable VHF ICOM 6 watts
- 2 small sized COBRA Marine VHF's 5 watts for use when mooring or anchoring Mc Murdo GMDSS NAVTEX receiver
- Tank monitoring system on all tanks(TANK TENDER-U.S.A)

Cockpit:

- Autopilot, Monitored at Chart Table (Interfaced to PLOTTER & GPS) Digital Compass, Monitored at Chart Table
- Extra: Analog Indicator Magnetic Type Compass
- RITCHIE magnetic compass
- Diesel flow meter
- Rudder Angle Indicator
- Speed Log Monitored at Chart Table (RAYTHEON) Depth Sounder Monitored at Chart Table (RAYTHEON) CAMOS SAT -TV Antenna
- Extra portable GPS with large screen
- Large refrigerator
- BOWTHRUSTER Controls
- ANCHOR CONTROL with chain length indicator JOY STICK steering control

Facilities

General:

- HOOD Furling System for main Sail, - HARKEN reefing system for Genoa and Stay Sail

easy sail handling within the cockpit area

- Inflatable dinghy 3,60 m (GRP RIB BOTTOM) steering console
- Auxiliary outboard engine YAMAHA 5 HP (new 2004)
- Outboard engine for water skiing YAMAHA 25 HP electric start (new 8/2005)
- Hot 1 Cold pressurized water throughout
- U. V. sterilized drinking water from Desalinator
- Electric toilets, household size (JABSCO), all new toilet bases and motors and pumps new 2008
- Central air-conditioning throughout with separate control panel in each cabin and 12V oscillating fans in cabins for night use
- Individual stereo systems in each cabin KENWOOD 2DIN size AAC/- AM / FM Tuner Cassette IDVDIMP3 and WMA Decoder, 24 BIT digital Audio converter and USB2.0 support - Memory flash 4GB for endless music iPod and bluetooth redy player Waterproof SONY loudspeakers in cockpit all renewed (2/207)
- Ability of Worldwide communications through SSB radio (SAILOR) 250 Watts
- 20 inch TFT SONY TV - BRA VIA (3/2006) in saloon
- Satellite TV antenna and decoder
- PHILIPS CD, DVD, MP3, VCRNHS and 5,1 Home cinema(3/2006) in the Saloon and Flatscreen TV 20' with DVD CD MP3 in the Master cabin
- SONY mini stereo system CD,MD and Tuner monitored to deck with fader
- 220 V AC plugs in each cabin
- Intercommunication system on all cabins and saloon
- Spacious lockers in each cabin with automatic interior lights
- Large Marine type cockpit refrigerator for cold drinks
- Ice maker
- Awning tent and cockpit tent
- Windscreen to protect cockpit from excessive spray
- Cockpit cushions new 5/2008

- Spray hood with extension
- Fireproof safe-box in master cabin

Galley

- Electric cooker, ceramic top, with drawer front oven 220 V (BOSCH/GERMANY)
- Microwave oven (BOSCH/GERMANY)
- Three Refrigerators & Freezer twin system 12V and 220V
- Drinking water from separate 120 Lt Water Tank
- 12V FRIGOBOAT Water cooler (new 3/2006)
- SEAGULL Water Filter for pure drinking water
- Electric Coffee maker (BOSCH/GERMANY)
- Galley Extractor fan (BOSCH/GERMANY)
- Luxury china crockery and cutlery
- Luxury cooking utensils
- Espresso machine, ice crusher, blender, toaster, grill , milk shaker and lots of other utensils

Accommodation

- Guest accommodation is contained in 2 identical large, double cabins and one suite Master cabin forward, all cabins are comfortable, pleasant fitted with mirrors and en-suite facilities.
- The forward crew cabin has a separate entrance and private facilities.

Interior:

All walls and furniture have a pearly white finish, which creates an impression of space and light. In the superbly equipped galley delicious meals can be prepared and in the saloon/dining, which seats eight persons comfortably, dining can be enjoyed, using specially selected crockery, cutlery and glassware provided

All materials used, for the ceiling and upholstery, to the thick custom made carpet, are soft,

pleasing to the eye. The blue related colours, the halogen lights and the indirect lighting adds an extra dimension.

All metal parts, lighting fixtures, etc., are gold plated, enhancing the stylish interior.

No extravagance at sea, when you wish to maintain the initial high standards of the yacht. Interior was completely repainted and redecorated in May 2005 and refreshed 2/2008. Saloon side windows were renewed (12/2004)

Safety

- Double macerators for the holding tanks (ITT) and emergency hand pumps
- Bilges: Two electrical and one emergency manual pump (IIT) capacities 2700 Gal/Hr and 3700 Gal/hour
- Electrical fuel transfer pump, supplying the Generator tank new fitted August 2005
- Independent Main Generator system, with separate tank & battery
- Independent auxiliary generator with tank and battery
- Main Engine, can start either from its own batteries or from the service batteries Fumes. Fire-Water level Detectors in bilge & engine room (IIT)
- Automatic fire extinguishers in engine room & lazarette
- Double blower system in engine room and lazarette (ATTWOOD)
- Easy access to the engine room through side doors and the removable front part of the engine room Two liferafts (SOLAS 8 pax PLASTIMO) offshore pack
- Horse shoe ring with Strobo light and Lifesling
- Life vests under berths
- Safety belts and lifelines
- Grab rails on deck
- 220 V Safety plugs throughout (Magic Type), TICING / ITALY
- All electrical wiring is heavy duty -10 to + 120 degrees centigrade, (TUBBI / ITALY)
- No Asbestos or gas is used onboard

-
- Fire retardant material was used for upholstery, carpeting bed covers etc
 - New leather upholstery for saloon sofa 3/2008
 - Adequate spare parts and tools on board as well as plenty of spares in storage house ashore (20' container) to be delivered with the boat
 - All Batteries (service - engine start - main generator - auxiliary generator and GMDSS VHF) renewed in April 2007
 - Sound insulation in engine room and generator space was renewed in April 2007
 - Electrical panel redesigned and completely rebuilt in June 2007

Exclusions

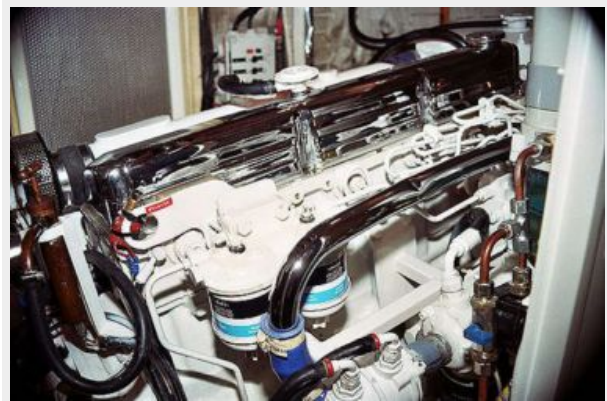
Owner's personal belongings.

Disclaimer

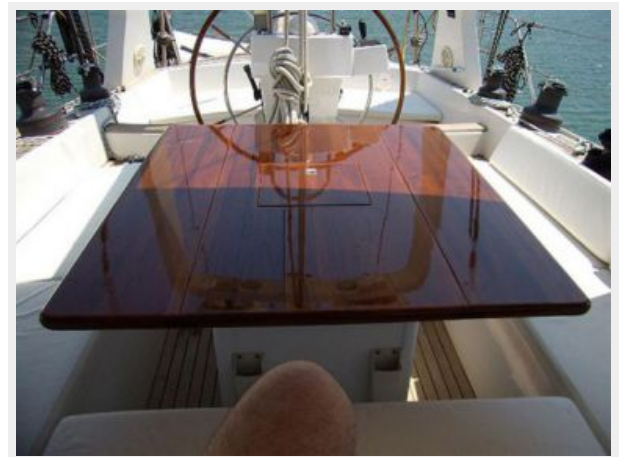
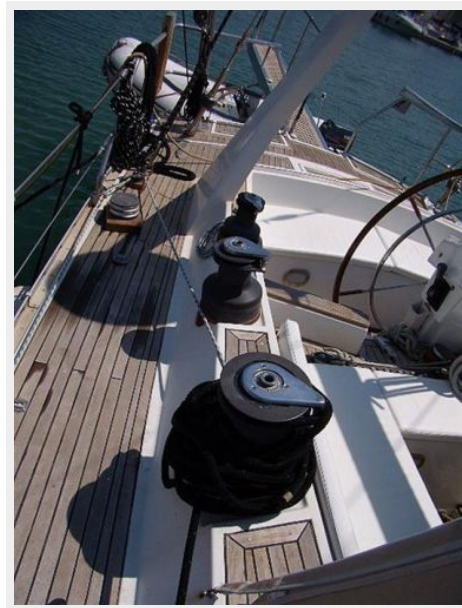
The Company offers the details of this vessel or yacht in good faith but cannot guarantee or warrant the accuracy of this information nor warrant the condition of the vessel. A buyer should instruct his representatives, agents, or his surveyors, to investigate such details as the buyer desires validated. This vessel or yacht is offered subject to prior sale, price change, or withdrawal without notice.

PHOTOS

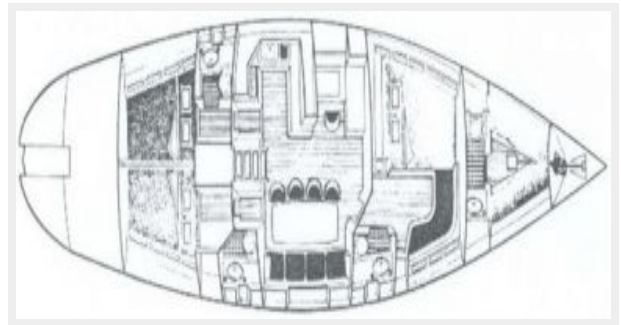
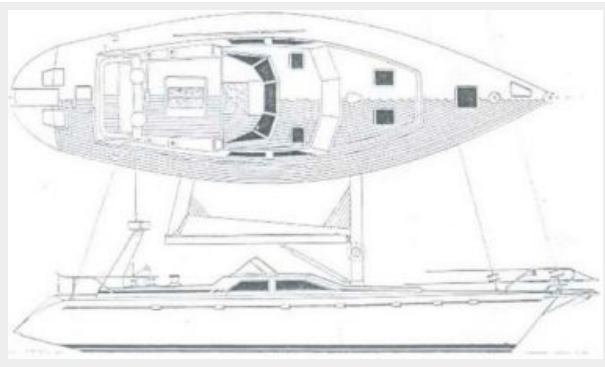












CONTACTS

Andrey Shestakov, leading yacht broker of the sales department of Shestakov Yacht Sales Inc. Shestakov Yacht Sales Inc., the official representative of the Miami/Fort Lauderdale FL headquarters.

Contact details

Email: andrey@shestakovyachtsales.com

Web: shestakovyachtsales.com/en/

Telephones

USA: +1(954)274-4435

Office hours

Monday – Saturday: **9:00 - 21:00** EDT

Sunday: **closed**

Address



Harbour Towne Marina, 850 NE 3rd St,
STE 213, Dania, FL 33004