

GATSBY — ELCO MARINE



Builder: ELCO MARINE

Year Built: 1930

Model: Cruiser

Price: PRICE ON APPLICATION

Location: United States

LOA: 57' 0" (17.37m)

Beam: 13' 0" (3.96m)

Min Draft: 3' 6" (1.07m)

Cruise Speed: 10 Kts. (12 MPH)

Max Speed: 14 Kts. (16 MPH)

Our experienced yacht broker, Andrey Shestakov, will help you choose and buy a yacht that best suits your needs **Gatsby — ELCO MARINE** from our catalogue. Presently, at Shestakov Yacht Sales Inc., we have a wide variety of yachts available on our sale's list. We also work in close contact with all the big yacht manufacturers from all over the world.

If you would like to buy a yacht **Gatsby — ELCO MARINE** or would like help answering any questions concerning purchasing, selling or chartering a yacht, please call **+1(954)274-4435**

TABLE OF CONTENTS

TABLE OF CONTENTS	2
SPECIFICATIONS	4
Basic Information	4
Dimensions	4
Speed, Capacities and Weight	4
Accommodations	4
Hull and Deck Information	4
Engine Information	5
DETAILED INFORMATION	6
Galley	6
Master Stateroom	6
Guest Stateroom	6
Aft Deck	6
Deck and Hull	6
Electrical and Electronics	7
Engine and Mechanical	7
Main Salon	7
Exclusions	8
Disclaimer	8
PHOTOS	9
Master Stateroom Dresser	9
Galley	9
Master Stateroom Facing Port Side	9
Master Stateroom Facing Aft Starboard	9
Master Head	10
Port Guest	10
Starboard Guest	10
Port Forward Salon	13

Starboard Forward Salon	13
Port Aft Salon Settee	13
Starboard Aft Salon	13
Forward Cabin Settee Aft	14
Forward Cabin Port Side Settee	14
Forward Cabin Built in T.V	14
Broker Notes	14
Broker Notes	15
Broker Notes	15
CONTACTS	16
Contact details	16
Telephones	16
Office hours	16
Address	16

SPECIFICATIONS

Basic Information

Category: Cruiser

Sub Category: Express

Model Year: 1930

Year Built: 1930

Country: United States

Dimensions

LOA: 57' 0" (17.37m)

Beam: 13' 0" (3.96m)

Min Draft: 3' 6" (1.07m)

Speed, Capacities and Weight

Cruise Speed: 10 Kts. (12 MPH)

Max Speed: 14 Kts. (16 MPH)

Water Capacity: 75 Gallons

Fuel Capacity: 300 Gallons

Accommodations

Total Berths: 1

Sleeps: 1

Total Heads: 1

Crew Berths: 1

Crew Sleeps: 1

Crew Heads: 1

Hull and Deck Information

Hull Material: Fiberglass

Engine Information

Engines: 2

Manufacturer: Cummins

Engine Type: Inboard

Fuel Type: Diesel

DETAILED INFORMATION

Galley

- New built-in Microwave
- New Refrigerator
- New Freezer
- New Cabinets
- New gas lines to stove and oven

Master Stateroom

Accessed through a starboard side companionway, the MASTER STATEROOM is below deck and all the way aft features; twin berths w/drawers underneath, large centered dresser aft w/mirror over, large swing-up ports, and ensuite head forward to port with lockers, tub, and shower. All interior woodwork is original varnished mahogany except the forward head enclosure and galley top cabinets. Custom carpeting, upholstery, and window treatments are post-2005. Original overheads with varnished mahogany capped beams.

Guest Stateroom

Adjoining a passageway to the GUEST STATEROOM is a guest head, linen locker, and drawers. The stateroom has twin berths, dresser with mirror forward, and large swing-in opening ports.

Aft Deck

The aft deck has a rear facing seat and two wicker chairs. All furniture and rails have protective tan Sunbrella weather covers. A hatch provides access to lazarette and steering gear. A hard top canopy extending aft from the salon provides shelter for the walkways and the trunk cabin. Life jackets are stowed in built in racks. A full width stowage box located upon the trunk cabin abuts the salon bulkhead. The canopy framing is bright finished mahogany adding rich detail.

Deck and Hull

- Frames: Steam bent oak 1 5/8" x 1 5/8" on 12" centers with closer spacing in engine room.
- Several forward replaced 1985.
- Floor Timbers: Oak fitted to all frames
- New wicker chairs w/ mahogany arms & sun covers on aft deck 2006
- Hull, decks, trunk cabin & hard canopy tops professionally fiberglass coated 2005-6

- Keel & Stem: 4 3/4" sided white oak. Stem replaced 1985.
- Hull planking: 1 1/4" white cedar copper riveted to frames
- Foredeck: Tongue & groove 2" fir over 2' tongue & groove lathing
- Side decks: White Cedar. Deck beams: oak.
- Exterior joiner work: Solid mahogany; including trunks, deckhouse, toe & cap rails, & skylight.
- Foredeck storage boxes and aft deck bench seat: Mahogany- new in 2006
- Freshly painted in 2007-8.
- New signal mast 2006
- Cap rails, toe rails and all other exterior bright work re-varnished 2007-8
- Custom tan Sunbrella canvas covers for all bright work, furniture, & transom added 2006
- Anchor windlass (original) w/dual anchors & lift on foredeck.
- Original deck hardware
- Scheduled for paint touch-up and haul-out July 2008

Electrical and Electronics

- Raytheon Radar at helm
- Garmin GPS/plotter screen at helm
- Completely rewired in 1984 with 12V DC and 110V AC systems
- Custom AC & DC circuit breaker panels
- 110V shore power with cable
- 4 x 8-D batteries
- New 12V & 110V refrigerator & freezer system TV/VCR's in main salon and forward cabin
- Dual electric horns
- Marinetek VHF & loudhailer at helm
- Modern instruments at helm; hidden behind fold-down panel containing originals
- Icebox
- 12 KW generator
- Dual battery switches
- GFI electrical outlets
- Circulation Fan in engine room
- Portable spot light in engine room
- Helm controlled spotlight on hardtop
- 2005 replacing original

Engine and Mechanical

- Twin CUMMINS 6 cyl. BT 5.9 210 hp 4-stroke fresh water-cooled turbo diesels installed 1987. 240 hrs SMOH
- New transmissions installed w/engines 1987
- New engine plumbing, wiring, & filtering 1987
- Original controls retained
- New Fuel Tanks 1987

Main Salon

The salon has sliding windows on three sides & 3-pane windshield forward with crank operated center pane. Helm station is centered forward with both original and updated (hidden) instrument panels and full size chart table. To port is an access door forward with L-shaped settee aft with drop leaf table. To starboard are cabinets and desk. To port of the helm is a curved stairway leading down to the starboard galley and portside settee berth. A crew / guest cabin is forward with 3 berths with head and recently added shower. The engine room is accessed through a doorway at aft end of galley.

Exclusions

Owner's personal belongings.

Disclaimer

The Company offers the details of this vessel or yacht in good faith but cannot guarantee or warrant the accuracy of this information nor warrant the condition of the vessel. A buyer should instruct his representatives, agents, or his surveyors, to investigate such details as the buyer desires validated. This vessel or yacht is offered subject to prior sale, price change, or withdrawal without notice.

PHOTOS

Galley



Master Stateroom Dresser



Master Stateroom Facing Port Side



Master Stateroom Facing Aft Starboard



Master Head

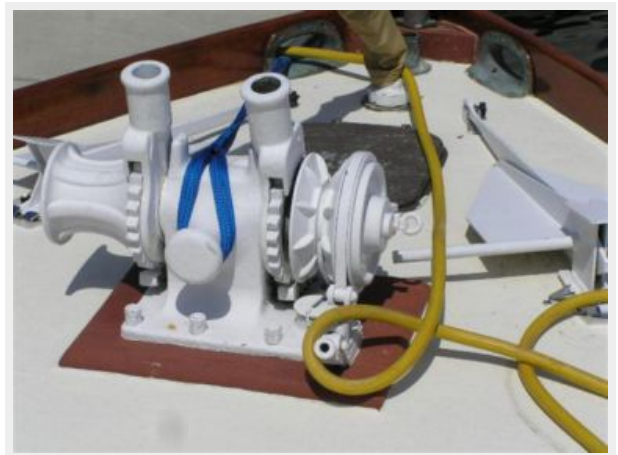


Port Guest



Starboard Guest

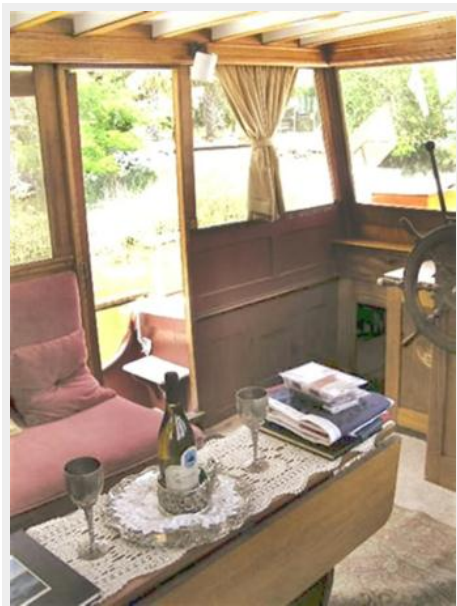








Port Forward Salon



Starboard Forward Salon



Port Aft Salon Settee



Starboard Aft Salon



Forward Cabin Settee Aft



Forward Cabin Port Side Settee



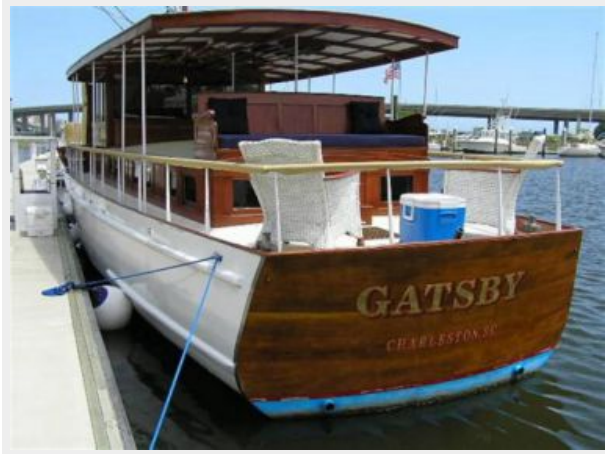
Forward Cabin Built in T.V



Broker Notes



Broker Notes



Broker Notes



CONTACTS

Andrey Shestakov, leading yacht broker of the sales department of Shestakov Yacht Sales Inc. Shestakov Yacht Sales Inc., the official representative of the Miami/Fort Lauderdale FL headquarters.

Contact details

Email: andrey@shestakovyachtsales.com

Web: shestakovyachtsales.com/en/

Telephones

USA: +1(954)274-4435

Office hours

Monday – Saturday: **9:00 - 21:00** EDT

Sunday: **closed**

Address



Harbour Towne Marina, 850 NE 3rd St,
STE 213, Dania, FL 33004