

2007 AZIMUT 68S — AZIMUT



Builder: AZIMUT

Year Built: 2007

Model: Motor Yacht

Price: PRICE ON APPLICATION

Location: Mexico

LOA: 68' 0" (20.73m)

Beam: 16' 8" (5.08m)

Max Draft: 5' 4" (1.63m)

Cruise Speed: 33 Kts. (38 MPH)

Max Speed: 37 Kts. (43 MPH)

Our experienced yacht broker, Andrey Shestakov, will help you choose and buy a yacht that best suits your needs **2007 AZIMUT 68S — AZIMUT** from our catalogue. Presently, at Shestakov Yacht Sales Inc., we have a wide variety of yachts available on our sale's list. We also work in close contact with all the big yacht manufacturers from all over the world.

If you would like to buy a yacht **2007 AZIMUT 68S — AZIMUT** or would like help answering any questions concerning purchasing, selling or chartering a yacht, please call **+1(954)274-4435**

TABLE OF CONTENTS

TABLE OF CONTENTS	2
SPECIFICATIONS	4
Overview	4
Basic Information	4
Dimensions	4
Speed, Capacities and Weight	4
Accommodations	4
Hull and Deck Information	5
Engine Information	5
DETAILED INFORMATION	6
Extras	6
Main Deck	6
Bow	6
Stern	6
Main Helm Station	7
Salon	7
Master Stateroom	7
VIP Stateroom	8
Guest Stateroom	8
Galley	8
Exclusions	8
Disclaimer	8
PHOTOS	10
CONTACTS	18
Contact details	18
Telephones	18
Office hours	18
Address	18



SPECIFICATIONS

Overview

Basic Information

Category: Motor Yacht	Sub Category: Cockpit
Model Year: 2007	Year Built: 2007
Country: Mexico	Vessel Top: Hardtop
Cockpit: Yes	

Dimensions

LOA: 68' 0" (20.73m)	Beam: 16' 8" (5.08m)
Max Draft: 5' 4" (1.63m)	MFG Length: 69' 5" (21.16m)

Speed, Capacities and Weight

Cruise Speed: 33 Kts. (38 MPH)	Max Speed: 37 Kts. (43 MPH)
Displacement: 70000 Pounds	Water Capacity: 251 Gallons
Fuel Capacity: 845 Gallons	

Accommodations

Total Cabins: 3	Total Berths: 4
Sleeps: 6	Total Heads: 3
Crew Cabin: 1	Crew Berths: 2
Crew Sleeps: 2	Crew Heads: 1

Hull and Deck Information

Hull Material: GRP

Deck Material: Fiberglass

Hull Configuration: Planing

Hull Color: Red

Hull Finish: Plastic

Hull Designer: Stefano Righini

Exterior Designer: Stefan Righini

Interior Designer: Carlo Galeazzi

Engine Information

Engines: 2

Manufacturer: MAN

Model: 12V CRM

Engine Type: Inboard

Fuel Type: Diesel

DETAILED INFORMATION

Extras

- Electrical system 110v/60 hz - 220v/110v Converter Sea Mod. Asp 25 k - 28 kw generator - Sidepower bow thruster - Tropical air conditioning - Air conditioning duct in master head - Gyroplus - E120 in main helm instead of the std. Equipment - Racor filter - 48nm antenna - Cockpit cover - 2 underwater lights - Shore water plugs - Ice maker in cockpit - Dimmers for internal lights - Safe in master cabin - Hi-lo mechanism - TV predisposition in guest cabin - Oil change system - Bordeaux hull - 3 additional 110v sockets in salon to be placed next to 3 std. ones - 1 additional 110v socket in guest cabin to be placed next to the std. one - 2 additional 110v sockets in VIP cabin to be placed next to the std ones - 1 additional 110v socket in guest cabin in addition to the std one - Wash-dryer - Teak cover for galley sink - Flagpole - Stainless steel fender holder - Curtain in salon - Wenge wood floor - Cradle for tender - Additional carpet to be placed over the floor - Additional conduits connecting engine room, radar arch, and console - Sea fire extinguishing system - TV predisposition in VIP cabin - Satellite TV predisposition in all cabins (Master, VIP, Guest) salon - Home theater predisposition in salon instead of std stereo - DVD predisposition in master cabin - Watermaker predisposition

Main Deck

- 2 midships cleats (one on each side)- Hand rails and accessories in stainless steel- Impact resistant fender bar in stainless steel and PVC- Teak walkways- Windows in tempered glass directly mounted in GRP, mirror finished- Opening hard top with heatless glass windows- Navigation lights- No. 2 fuel filters with protective cover- One fresh water intake port side- Black water tank discharge intake on stb side walkway

Bow

- 1700w,24v winch; 100mm (33") barbotin and capstan drum- Chain winch controls- 30kg (66 lb) anchor, 75m (246' 06"), 10mm (039") chain- Anchor chain housing with drain in bow locker- Chain Wahsdown- Stainless steel anchor nose- Two electric windscreen wiper-washers with return to idle position and window washer incorporated in the brush- Two stainless steel bites- Bow sundeck cushions with glass holders- Hatch- Steel handrails by sundeck cushions sides

Stern

- Salon access four-wing door in tempered glass- Tender storage compartment 3.2mm (10' 50") max length (included outboard motor), 1.62m (5' 32") wide- Garage hatch with electrohydraulic opening- Tender winch inside garage- Acoustic alarm for garage hatch and platform manoeuvres- GRP sundeck in cockpit with mobile back and stairs to crew cabin- GRP cabinet

with: fridge, sink, storage drawer and garbage bin- GRP bench port side- Shower with hot and cold water- 3.4m (11'16") extended electrohydraulic gangway- Collapsible electrohydraulic bathing ladder in stainless steel-teak- Shore sockets- Antifouling paint- Stern fairleads in stainless steel incorporated in deck design- Two stainless steel bites- Two electric winches (1000 w)- Cushions on cockpit bench and sundeck- Lights in cockpit cover- Walkways lights on access steps to platform and access to side walkways- Steel cockpit access hatch- Teak cockpit and platform access steps- Two side lights on bathing platform- 1.2m (4'92") mobile bathing platform with teak floor, 450kg lifting capacity- Boat hook

Main Helm Station

- Electrically adjustable single seat for pilot- Two-seater wheel house bench- Steering compartment wheel in stainless steel and leather, height adjustable- Power steering- Hand rail- Engine control levers, Navigation instruments, Engine control panel complete with acoustic and optical alarms,- Engine electronic ignition keys with start and stop buttons, Generator control (in galley control panel), Extractor switches, Air intake and fan control switches, Battery parallel connection, Compass, Bow thruster control, Anchor winch control, Trim tab controls with indicators, Windscreen wiper-washer controls- Switches for: electrically operated opening side windows, Chain wash down, Instruments lights, Horn, Alarm test, Navigation lights, Alarms shut-off, Bilge pump control- Alarms for: Bilge water, Grey water tank high level, black water tank high level, Navigation lights, Anchorage lights, Shore sockets, Service batteries, Engine batteries, Chain washdown, Extractors, Fans, Water in filters, Hydraulic until oil level, platform, bathing ladder- Rudding angle indicator- Fuel level gauge- Fresh water tank level gauge- Rev. counter/hour counter- Starboard and port engine coolant temperature gauge- Starboard, port engine and marine gear oil pressure gauge- Speedometer in knots and miles counter- Chain meter counter- 12v lighter socket- Alternator ammeters and battery charger

Salon

- Sofa on port side with pouf- Middle pouf equipped with Wengé tray- Armchair and bow towards adjacent stern and cabinet with glass top towards middle of boat- Three-seater sofa on starboard side placed between two built-in cabinets- Bar cabinet with glass top- Table in Wengé with leaf top- TV antenna system (with sockets in salon and owner's cabin)- Radio with CD and two pairs of speakers (one watertight pair in cockpit ceiling)- Halogen lighting- Salon floor in Wengé

Master Stateroom

- Double bed with drawer unit- Double-door wardrobe in fore section of the cabin- Aft wardrobe with drawers and rack- Built-in drawer unit on starboard side with two armchairs and table- Radio Cd player with speakers- Shading curtains and six square portholes- Wengé wood doors and frames- Direct access to owner's bathroom- Reading lights- Fluorescent lighting- Carpet- Owner's Head:- Access from owner's cabin- Separate shower with glass door equipped with thermostatic

mixer and diverter for double delivery- Tecma WC- Washbasin with transparent glass top, tick. 15mm- Wengé wood shelf under the washbasin- Bulwark cabinet with drawers- Wengé wood floor- Air extractor- Round porthole- Venetian blinds in wood, finish in Wengé

VIP Stateroom

- Double bed- Wengé wood headboard- Shelves above porthole- Wardrobe with drawers on port side- 2 built-in corner storage units- 2 round portholes, 300mm (98") diam- Deck hatch with shade and mosquito screen- Reading lights- Soft ceiling lights- Fluorescent lights- CarpetVIP Head:- Access from VIP cabin- Large round shower with plexiglass doors and wooden grating- Tecma WC- Shower column with soap holder and thermostatic mixer- Washbasin with transparent glass top- Bulwark cabinet with drawers- Round porthole- Floor in Wengé wood- Air extraction- Venetian blinds in wood, finish in Wengé

Guest Stateroom

- Twin beds - Central bedside table, switches - Reading light - Finishing strip in Wengé - Built-in wardrobe with drawers and rack - Round porthole - Fluorescent lighting - Diffused lighting under beds - Carpet - Drawers under bed Guest/Day Head: - Access from guest cabin and from corridor - Large round shower with plexiglass doors and wooden grating - Tecma WC - Washbasin with transparent glass top - Bulwark cabinet with mirror - Round porthole - Air extraction - Venetian blind in Wengé

Galley

- 220V 4 burner ceramic hob with fiddle-rail- Microwave oven and grill- Stainless steel worktop with two sinks- Extractor hood- 270L (71 USgal) fridge- Base cabinets with drawers, storage, compartments and garbage bin- Wengé wood wall cabinets- Post storage under the sinks- Wengé wood floor- Cabinet for dishes, glasses and cutlery next to fridge cabinet- Storeroom below stairs and wall cabinets

Exclusions

Owner's personal belongings.

Disclaimer

The Company offers the details of this vessel or yacht in good faith but cannot guarantee or warrant the accuracy of this information nor warrant the condition of the vessel. A buyer should instruct his representatives, agents, or his surveyors, to investigate such details as the buyer desires validated. This vessel or yacht is offered subject to prior sale, price change, or withdrawal

without notice.

PHOTOS

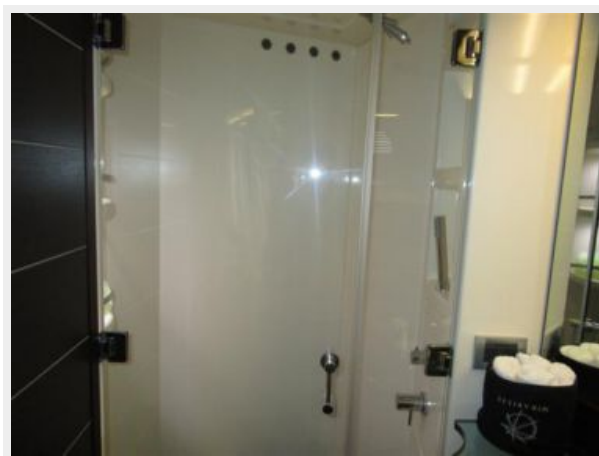
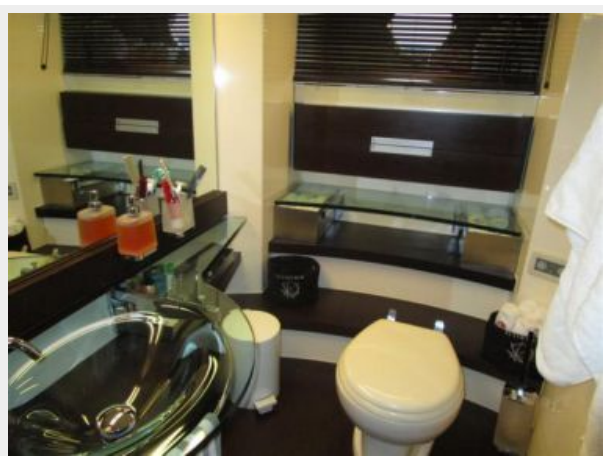


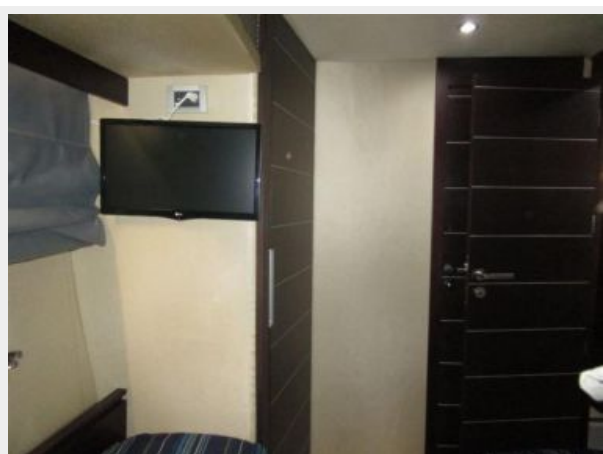
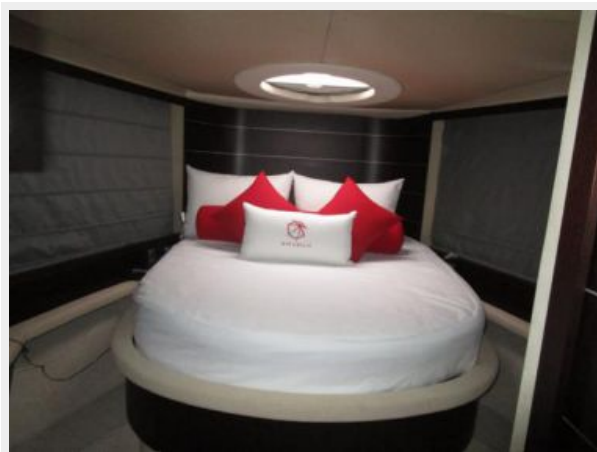
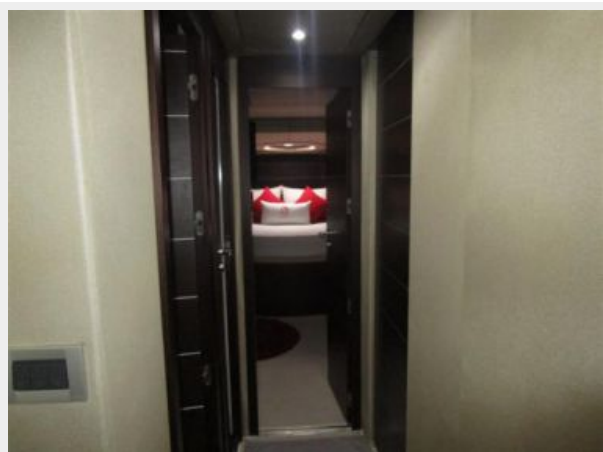














CONTACTS

Andrey Shestakov, leading yacht broker of the sales department of Shestakov Yacht Sales Inc. Shestakov Yacht Sales Inc., the official representative of the Miami/Fort Lauderdale FL headquarters.

Contact details

Email:
andrey@shestakovyachtsales.com

Web: shestakovyachtsales.com/en/

Telephones

USA: **+1(954)274-4435**

Office hours

Monday – Saturday: **9:00 - 21:00 EDT**

Sunday: **closed**

Address



Harbour Towne Marina, 850 NE 3rd St,
STE 213, Dania, FL 33004