

ORIANA — BURGER



Судостроитель: BURGER

Год постройки: 1984

Модель: Моторная яхта

Цена: **ЦЕНА ЯХТЫ ПО ЗАПРОСУ**

Местонахождение: Canada

Длина общая: 96' 0" (29.26m)

Ширина: 21' 9" (6.63m)

Макс. осадка: 5' 9" (1.75m)

Крейс. скорость: 14 Kts. (16 MPH)

Макс. скорость: 15 Kts. (17 MPH)

Купить **ORIANA — BURGER** а также выбрать подходящую вам яхту из нашего каталога яхт вам поможет опытный яхтенный брокер Андрей Шестаков. На сегодняшний день компания **Shestakov Yacht Sales Inc.** имеет большое количество яхт в собственном списке продаж, а также тесно сотрудничает со всеми крупными яхтенными производителями по всему миру.

Для того чтобы купить яхту **ORIANA — BURGER** а также проконсультироваться по любому вопросу связанному с покупкой, продажей, чартером яхт позвоните по телефону **+7(918)465-66-44**.

ОГЛАВЛЕНИЕ

ОГЛАВЛЕНИЕ	2
ХАРАКТЕРИСТИКИ	4
Обзор	4
Основная информация	4
Размеры	4
Скорость, вместимость и масса	4
Размещение	5
Корпус и палуба	5
Информация о двигателе	5
ПОДРОБНОЕ ОПИСАНИЕ	6
Salon	6
Features	6
Accommodations	6
Engine/Mechanical Equipment	6
Galley/Laundry Room	7
Electronics and Navigational Equipment	7
Deck and Hull Equipment	8
Remarks	9
Exclusions	9
Исключения	10
Отказ от ответственности	10
ФОТОГРАФИИ	11
Salon	11
Salon	11
Dining Salon	12
Dining Salon	12
Pompanette Chairs	12
Pilothouse	12

Galley	13
Galley Starboard	13
Master Stateroom	13
Master Stateroom	13
Master Bath	13
Master Stateroom	13
Guest Stateroom	14
Guest Stateroom	14
Shelving Starboard	14
Guest Stateroom	14
Laundry	15
Flybridge Helm	16
Aft Deck	16
Aft Deck	17
Boat Deck	17
Foredeck	17
Foredeck	17
Tender	18
At anchor	18
КОНТАКТЫ	20
Контактная информация	20
Телефоны	20
Время работы	20
Адрес	20

ХАРАКТЕРИСТИКИ

Обзор

Unique four stateroom, long range, CAT powered Burger in good condition. Owned by a Foundation who is a Serious seller!!!!. Price Just Reduced.

body {font-family: helvetica, arial;font-size: 12pt;} body {font-family: helvetica, arial;font-size: 12pt;}

Основная информация

Тип судна: Моторная яхта

Модельный год: 1984

Год постройки: 1984

Страна: Canada

Открытая палуба мостика: Да

Размеры

Длина общая: 96' 0" (29.26m)

Ширина: 21' 9" (6.63m)

Макс. осадка: 5' 9" (1.75m)

Длина привального бруса: 96' 0"
(29.26m)

Скорость, вместимость и масса

Крейс. скорость: 14 Kts. (16 MPH)

Макс. скорость: 15 Kts. (17 MPH)

Вместимость воды: 980 Gallons

Объем топливного бака: 6721 Gallons

Размещение

Всего кают: 4

Всего коек: 1

Спальные места: 8

Всего ком. состава: 4

Каюта капитана: Да

Каюты экипажа: 3

Койки экипажа: 4

Спальных мест экипажа: 4

Комм. состав экипажа: 2

Корпус и палуба

Материал корпуса: Aluminum

Информация о двигателе

Двигатели: 2

Производитель: Caterpillar

Модель: 3412

Тип двигателя: Inboard

Тип топлива: Diesel

ПОДРОБНОЕ ОПИСАНИЕ

Salon

The large main salon has two leather L-shaped settees and wicker lounge chairs. On the forward bulkhead is a stand behind bar and four stools. The salon is bright and airy with large windows on the sides and rear. Aft of the salon is the aft deck with an expanding dining table. The aft deck can be open on three sides or can be enclosed with Eisen glass or partially opened up with 6 zipper panels.

Features

Joinerwork: Woodwork The joinerwork is above the standard for other Burger's of this vintage. The dining room and master stateroom are Birdseye Maple. The rest of the joinerwork including the pilothouse is natural Oak. There are Burl inlays on the aft passageway; salon furniture and forward salon bulkhead. All the joinerwork is nicely matched with tight, well done seams. The sides of the salon have had wall covering applied to the paneling as a décor touch. This can easily be brought back to the oak paneling if desired. Other features/equipment: Entertainment Equipment: New TV/VCR main salon, master stateroom; Television crew quarters, dining salon, port guest stateroom, starboard guest stateroom, guest stateroom and small guest room; Stereo main salon, master stateroom, crew quarters; speakers throughout. Switchboard for all TV's for cable/antenna/VHS. Special sound shields on generator valve covers and oil pans; special motor and generator mounts and low resolution propeller shaft couplings make this yacht one of the quietists, smoothest running Burger Yachts afloat.

Accommodations

Sleeps 8 in 4 staterooms. There are 4 owners and guest staterooms including 3 guest heads and 3 guest showers. Crew accommodations include 5 berths, 2 heads, and 2 showers. The Captain's quarters are separate. The master stateroom has a king-size bed and two guest staterooms have large twins and the third stateroom has criss-cross twin berths. This stateroom has a sink and commode only. There is a powder room on the main deck.

Engine/Mechanical Equipment

- J.D. Nall (Aqu Air) air conditioning throughout including engineroom, two chillers each 60,000BTU/5TON, 10 TON total (One compressor in one chiller is not operating-cost for new improved 5TON soft start chiller is about \$15,000 installed(\$9677.00 + tax + labor including effecient heat mode). On the west coast USA/Canada only half of one chiller or one compressor is used for cooling so there is presently tripple redundancy. For tropical use, one chiller should be replaced and this will give the benifit of less amperage spike on

start up. Captain has exact equipment quotation and labor estimate.

- Halon fire control system
- Wagner hydraulic wheel steering.
- New Marine Air Imersion heater for chilled water A/C system 2009
- Naiad #254 stabilizers
- (2) bilge blowers
- Freshwater cooling system
- (2) spare propellers
- Galley Maid 800 &600 GPD water makers (rebuilt w/ new membranes 2006)
- Fire Fighting seawater pump
- (2) 47 gallon water heaters
- Mansfield vacuum toilet system
- Fuel leveling system/Fuel transfer system with racor filter
- ZF model BW250 transmissions
- Headhunter and Burkes water pumps
- (2) spare stub shafts
- 1- 50 kw, 1800 rpm generator
- 1- 35 kw, 1200 rpm generator
- Port Generator:13,007 hours
- Starboard Generator: 13,680 hours
- Port main engine: 6,151 hours
- Starboard main engine: 6,332 hours

Hours reported are approximate: On engines these are from service hour meters on the engines which are not necessarily the exact hours. The generator hours are for electric hour meters.

Galley/Laundry Room

- GE clothes washer & dryer
- GE refrigerator w/freezer
- GE 4 burner electric stove
- Microwave
- Dishwasher
- Garbage disposal
- Icemaker
- Instant hot water
- 10 cu. Ft bar refrigerator
- 10 cu. Ft. smaller refrigerator in store room
- 10 cu. Ft. small freezer in storeroom

Electronics and Navigational Equipment

- Plath Navipilot II autopilot w/ervo. repeater and course alarms(service 2009)

- Nobeltec chart system
- Fathometer (new 2009) integrated with NAV system
- Simrad flybridge radar
- Furuno "Black Box" radar pilot house (flat screen) with ARPA and AIS
- Horizon VHF radio
- ICOM VHF radio w/remote
- Brother Officejet fax/copy machine/scanner
- Plath Navigate stationary gyro compass
- Datamarine International offshore depth sounder w/flybridge remote
- Raython F720D flashing depth sounder
- Plath Navigon III automatic direction finder w/gyro interface
- Furuno FPS w/plotter and Nobetec chart plotter
- Kenyon speed and distance log
- Datamarine Navigator speed and distance log with flybridge remote
- 17 Merlin telephones each with 3 lines and 5 speaker phones
- Kenyon wind speed indicator with flybridge remote
- Plath Naviwarn compass steering and course select
- Dual station steering option from either bridge or pilothouse
- Kenyon air/sea temperature gauge
- Two Pilothouse Pompanette Chairs
- KVH M-7 satellite gyro (new 2009)

Deck and Hull Equipment

- (2) Danforth 150 lb through the bow anchors with (2) 300 chain rodes
- Danforth 60 lb. anchor with 250 1 rope
- Marquipt 9 step Tide Ride boarding ladder with teak rails
- Marquipt 7 step Tide Ride boarding ladder with teak rails
- Marquipt vertical hanging ladder
- Marquipt custom 12 Mediterranean boarding ladder w/rails and wheels
- Floodlights on mast for boat deck
- 406 EPIRB (new 1997)
- (2) Ideal windlasses on aft deck with 1/2 HP rope capstans
- Galley Maid 5 HP windlass on foredeck with dual gypsy
- 18' Boston Whaler w/ two 70 hp Yamahas (one motor low compression)
- 14' Novurania w/ 50 hp Yamaha
- Deck crane with block and tackle
- (2) Marquipt hydraulic 3500 lb. capacity cranes
- Kahlenberg T-3 dual air horn and whistle, dual station auto/manual controls
- (2) Avon 8-person self-inflating life rafts
- (2) Carlisle and Finch remote search lights
- Windshield washer and wipers
- Coast Guard safety package

- Freshwater wash down
- Bimini top, Eisen glass on flybridge
- 16" hydraulic bow thruster (new 2004)

Remarks

ORIANA is one of the finest Burger's ever built and was Henry Burgers pride and joy. She was the second Burger for her original owner and subsequent owners have owned Burgers previously and sought out ORIANA for purchase because she is a very special Burger. In 1986 she was lengthened by 5' by Bradford Marine as designed by J.B. Hargrave the original designer. The purpose of the extension was to transform the original cockpit to an aft deck and extend the boat deck about 12' and install two new cranes for larger (20+) tenders. At the same time the anchoring system was upgraded and a Med-gangway was built for worldwide cruising. The original lazarette under the cockpit has now been transformed into a huge storage room with refrigerator and freezer that could be used for motorcycles or wave runners. The aft deck has a fold-down set of steps to the swim platform creating the same utility as the new Euro-transoms, but with the ability to close in the aft deck with Eisen glass when needed. The stairs are invisible when up and all one sees is a traditional transom. ORIANA is a powerful, economical, displacement hull, which is much different than the shallower bilge, semi-displacement hull of most Burgers. She also has adequate power and torque that allows her cruising speed to be made in rough seas where displacement yachts with smaller engines can only make 8 or 9 knots. As well as having adequate fuel and the correct engines for long range trips, this design also features larger engine room, with engines placed low in the engine room for more stability. Larger crew quarter and storage below the crew quarters due to the hull design and the raised foredeck.

The main engines have their 5,000 hour service performed including new connecting rod bearings and motormounts. Since 2004 ORIANA has been in Vancouver/Victoria B.C. with a year round crew and ambitious upgrading/projects during the winter. She was painted in Florida before being shipped on a transport vessel to British Columbia. Her paint has aged well in Canada because the sun is not as strong as in Florida. These particulars are based on information provided by the sellers and are believed to be correct, although we cannot be liable for any inaccuracy. We recommend any purchaser to confirm details of concern to him by survey inspection and/or enquiry of the seller and to ensure that his concern is properly reflected in the purchase contract. An independent survey is always advisable. Ideal charter boat for well established southeast Alaska area, with some small modifications, such as different tenders, fly bridge enclosure, etc. Could gross close to a million dollars a year, plus transit north and south through Gulf and San Juan islands to/from a winter base is charterable too, but will require special marketing and itinerary review by U.S. and Canadian maritime attorneys to insure compliance with both countries regulations.

Exclusions

Not Offered For Sale Or Charter To Canadian Citizens/Residents While In Canadian Waters.

Not Offered For Sale Or Charter To U.S. Residents While In U.S. Waters

Исключения

При продаже яхты исключаются личные вещи владельца.

Отказ от ответственности

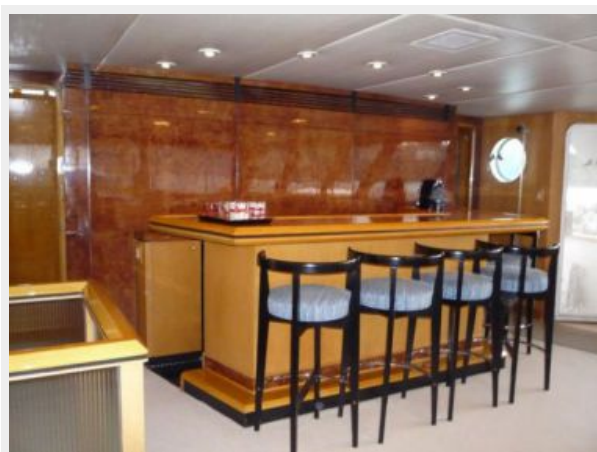
Компания предоставляет описание судна или яхты добросовестно, но не может гарантировать точность этой информации, а также не ручается за техническое состояние. Покупатель должен проинструктировать своих агентов или оценщиков исследовать представленную информацию более подробно, по собственному желанию. Продажа судна или яхты, изменение цены или снятие с продажи будет происходить без предварительного уведомления.

ФОТОГРАФИИ

Salon



Salon



Dining Salon



Dining Salon



Pompanette Chairs



Pilothouse



Galley



Galley Starboard



Master Stateroom



Master Stateroom



Master Stateroom



Master Bath





Guest Stateroom



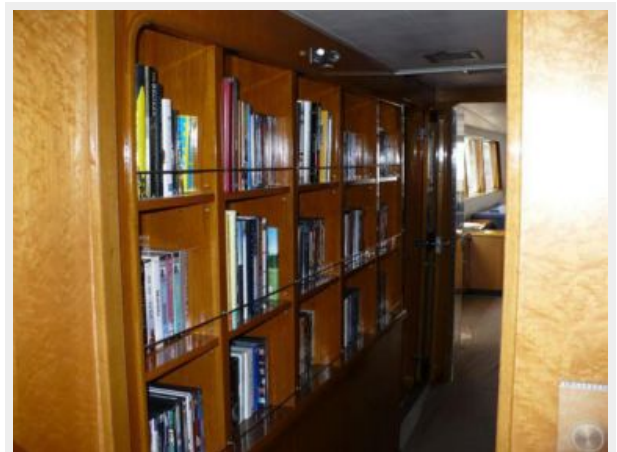
Guest Stateroom



Guest Stateroom



Shelving Starboard



Laundry





Flybridge Helm



Aft Deck



Aft Deck



Boat Deck



Foredeck



Foredeck



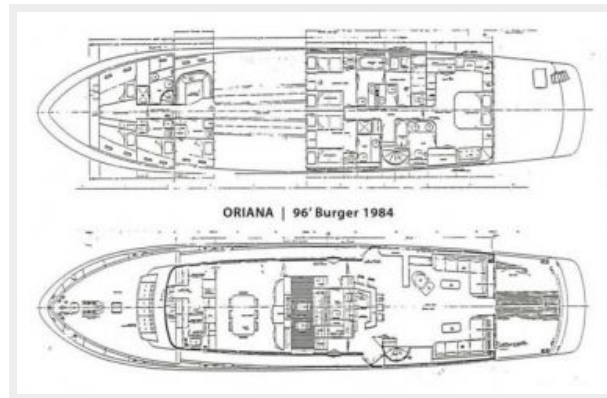
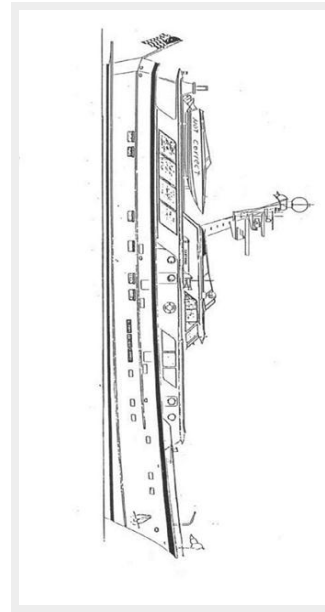
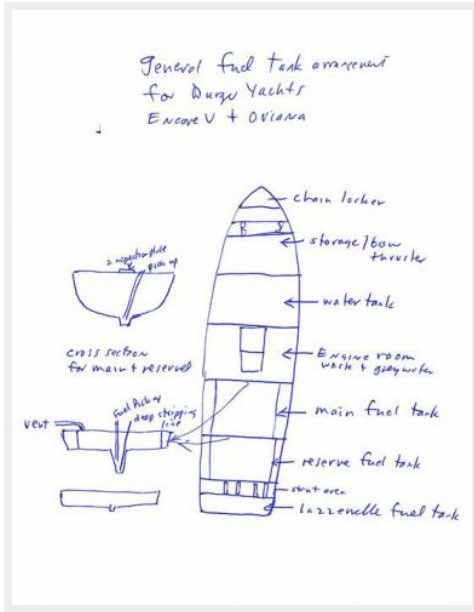


Tender



At anchor





КОНТАКТЫ

Андрей Шестаков (Andrey Shestakov) – ведущий яхтенный брокер отдела продаж яхт и судов компании Shestakov Yacht Sales Inc. Официальный представитель Shestakov Yacht Sales Inc. для русскоговорящих клиентов в центральном офисе компании в Майами/Форт Лодердейл/Флорида/США.

Контактная информация

Email: andrey@shestakovyachtsales.com

Web: shestakovyachtsales.com

Телефоны

Краснодарский край: **+7(918)465-66-44**

США, Майами, Флорида: **+1(954)274-4435**

Время работы

Понедельник – Суббота: **9:00 - 21:00**
EDT

Воскресенье: **Закрито**

Адрес



Harbour Towne Marina, 850 NE 3rd St,
STE 213, Dania, FL 33004