

MAGIC MOMENT — TARRAB



Builder: TARRAB

Year Built: 1993

Model: Motor Yacht

Price: PRICE ON APPLICATION

Location: United States

LOA: 75' 0" (22.86m)

Beam: 21' 6" (6.55m)

Min Draft: 5' 2" (1.57m)

Cruise Speed: 18 Kts. (21 MPH)

Max Speed: 14 Kts. (16 MPH)

Our experienced yacht broker, Andrey Shestakov, will help you choose and buy a yacht that best suits your needs **Magic Moment — TARRAB** from our catalogue. Presently, at Shestakov Yacht Sales Inc., we have a wide variety of yachts available on our sale's list. We also work in close contact with all the big yacht manufacturers from all over the world.

If you would like to buy a yacht **Magic Moment — TARRAB** or would like help answering any questions concerning purchasing, selling or chartering a yacht, please call **+1(954)274-4435**

TABLE OF CONTENTS

TABLE OF CONTENTS	2
SPECIFICATIONS	3
Overview	3
Basic Information	3
Dimensions	3
Speed, Capacities and Weight	3
Accommodations	3
Hull and Deck Information	4
Engine Information	4
DETAILED INFORMATION	5
Galley	5
Bridge Deck	5
Electronics and Navigational Equipment	5
Deck Equipment	5
Engine /Mechanical Equipment	5
Electrical System	5
Exclusions	6
Disclaimer	6
PHOTOS	7
CONTACTS	16
Contact details	16
Telephones	16
Office hours	16
Address	16

SPECIFICATIONS

Overview

1993 Tarrab Motor yacht.

Basic Information

Category: Motor Yacht

Model Year: 1993

Year Built: 1993

Country: United States

Fly Bridge: Yes

Dimensions

LOA: 75' 0" (22.86m)

LOD: 75' 0" (22.86m)

Beam: 21' 6" (6.55m)

Min Draft: 5' 2" (1.57m)

Speed, Capacities and Weight

Cruise Speed: 18 Kts. (21 MPH)

Max Speed: 14 Kts. (16 MPH)

Water Capacity: 150 Gallons

Fuel Capacity: 1945 Gallons

Accommodations

Total Cabins: 4

Total Berths: 1

Sleeps: 1

Total Heads: 1

Crew Berths: 1

Crew Sleeps: 1

Crew Heads: 1

Hull and Deck Information

Hull Material: Fiberglass

Deck Material: Teak

Hull Configuration: Modified V-Hull

Hull Color: White

Engine Information

Engines: 2

Manufacturer: Detroit Diesel

Model: 12V92TA

Engine Type: Inboard

Fuel Type: Diesel

DETAILED INFORMATION

Galley

Garbage Disposal U Line ice maker Frigid Air Refrigerator w/freezer Electric Stove with Oven Microwave Oven 4 GE Stove Burners Water Heater Water System: Pressure Trash Compactor Black & Decker toaster Oven Black & Decker Coffee maker Sony Stereo Central Vacuum System

Bridge Deck

Garmin GPS Icom Ic-M59 Hoblet Bow Thruster Control Tri - Data F200 Auto Pilot Remote

Electronics and Navigational Equipment

Robertson AP200 DL w/FB Remote Auto Pilot Ritchie Compass 5" Depth Sounder Furuno FMV-605 Recording Hailer Intercom Raymarine C-120 Loran Furuno Radar 72 miles Radios: SSB Icom Icm 700 Ray 420 VHF (primary) Rudder Angle Indicator Stereo 6 Televisions Video Recorder Echo Pilot (Fwd looking sounder) Raymarine C-120 GPS Ship mate RS 5500 Camera System Naid stabilizers ACR Spot Light Bow Thruster (Hoblet)

Deck Equipment

Anchor w/ Lines Maxwell Bimini Top Coast Guard Approved safety Package Deck material is Teak Deck Wash Down System: Freshwater Electric Dinghy Davits Novarania Dinghy LOA 13 Docking Lights Fenders & Lines Navigation Lights Electric Remote Control Search Lights Spreader Lights Swim (Boarding) Ladder Maxwell Windlass Windshield Washers & Wipers 1500lb Marquipt davit Givens 8-man life raft Yamaha 3 person waverunner Maxwell 3500 Windlass large jacuzzi on foredeck Bridge offers a wet bar with a ice maker & Refrigerator Magma Grill

Engine /Mechanical Equipment

Marine Air Air Conditioning 4 Bilge Pumps Hoblet Bow Thrusters Bridge Controls cabin Controls Engine Alarm Emergency Engine Stop Halon Fire Extinguishing System Racor Fuel filters Engine fuel Shut off valve Fume Detector Electric Holding Head Types Naid Stabilizers Hydraulic Steering Synchronizers ZF 2.448.1 Transmission HRO SYST Watermaker capacity: 800 gals Fixed Trim tabs Hynautic Engine Controls Fuel Polishing System 5 Blade propellor high Volume Engine Room Blowers 2 Chill water A/C units w/9 zones Dive Compressor

Electrical System

10 batteries Auto Battery Charger (Constavolt)80+60AMPSDockside Electrical CableOnan generator (Primary) 16K.W.Onan generator (Secondary) 16K.W.Electrical System: DC - 12V AC - 220V12/24 Volt DC system220 Volt 50 AMp system with 2 50A shore cords10 8D Batteries2 battery Chargers 80 A 12V & 60A 24V

Exclusions

Owner's personal belongings.

Disclaimer

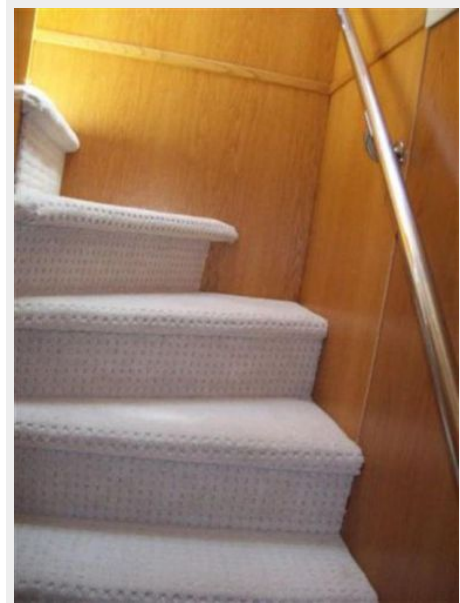
The Company offers the details of this vessel or yacht in good faith but cannot guarantee or warrant the accuracy of this information nor warrant the condition of the vessel. A buyer should instruct his representatives, agents, or his surveyors, to investigate such details as the buyer desires validated. This vessel or yacht is offered subject to prior sale, price change, or withdrawal without notice.

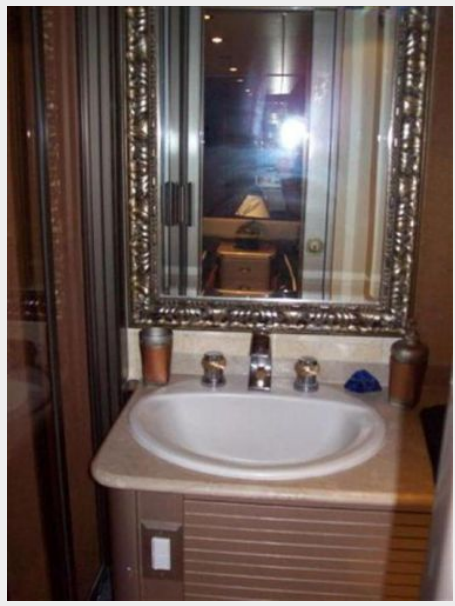
PHOTOS





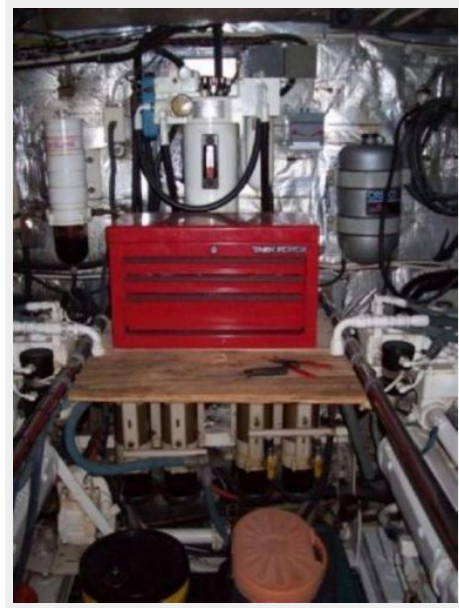














CONTACTS

Andrey Shestakov, leading yacht broker of the sales department of Shestakov Yacht Sales Inc. Shestakov Yacht Sales Inc., the official representative of the Miami/Fort Lauderdale FL headquarters.

Contact details

Email: andrey@shestakovyachtsales.com

Web: shestakovyachtsales.com/en/

Telephones

USA: +1(954)274-4435

Office hours

Monday – Saturday: **9:00 - 21:00** EDT

Sunday: **closed**

Address



Harbour Towne Marina, 850 NE 3rd St,
STE 213, Dania, FL 33004