

## REVELATION II — GLOBAL



**Судостроитель:** GLOBAL

**Модель:** Cruising Yacht

**Длина общая:** 127' (38.71mm)

**Макс. осадка:** 8' 5" (2.57mm)

**Крейс. скорость:** 10 Knots Kts. (12 MPH)

**Макс. скорость:** 13 Knots Kts. (15 MPH)

Купить **REVELATION II — GLOBAL** а также выбрать подходящую вам яхту из нашего **каталога яхт** вам поможет опытный яхтенный брокер Андрей Шестаков. На сегодняшний день компания **Shestakov Yacht Sales Inc.** имеет большое количество яхт в **собственном списке продаж**, а также тесно сотрудничает со всеми крупными **яхтенными производителями** по всему миру.

Для того чтобы купить яхту **REVELATION II — GLOBAL** а также проконсультироваться по любому вопросу связанному с покупкой, продажей, чартером яхт позвоните по телефону **+7(918)465-66-44**.

# ОГЛАВЛЕНИЕ

---

ОГЛАВЛЕНИЕ	2
ХАРАКТЕРИСТИКИ	3
Обзор	3
Основная информация	6
Размеры	7
Скорость, вместимость и масса	7
Размещение	7
Корпус и палуба	7
Информация о двигателе	7
ФОТОГРАФИИ	8
КОНТАКТЫ	11
Контактная информация	11
Телефоны	11
Время работы	11
Адрес	11

# ХАРАКТЕРИСТИКИ

## Обзор

This boat is a project. It has fallen out of Lloyd's class and currently needs new paint and to be re-comissioned. As such, the purchase price will depend upon whether a Buyer wants to receive it in 'turn-key' condition, or "as-is, where-is". The Owner of the four stateroom "Revelation II" is an experienced yachtsman whose previous 55-meter/180' motor yacht won awards for its tasteful re-fit and new interior. This vessel has undergone a series of extensive re-fits and upgrades valued at over \$10 million. 2008 re-fit included new galley, salon and electronics- both bridge and entertainment. In 2002, vessel was stripped down to her bare frames and completely rebuilt with new CAT engines, wiring, plumbing, electronics, Italian cabinetry, air conditioning, tankage, electrical panels, generators, overheads and hardware. In effect, what we have here is a remanufactured Camper & Nicholson Classic that is unique and not duplicable at any price. She is halfway through her 5-year Lloyds 100 A1 LMC and MCA inspections.

body {font-family: helvetica, arial;font-size: 12pt;} body {font-family: helvetica, arial;font-size: 12pt;} body {font-family: helvetica, arial;font-size: 12pt;} body {font-family: helvetica, arial;font-size: 12pt;} body {font-family: helvetica, arial;font-size: 12pt;} Decks

Lower deck: The engine room is amidships with crew quarters forward and two ensuite twin staterooms and a full beam VIP ensuite stateroom aft. Ma in deck: A large, shaded aft deck with dining table for ten, forward of which is the main saloon with bar, entertainment center, and comfortable seating. A lobby with day head is forward to starboard leading to the owner's suite comprising a full beam stateroom, lavish bathroom, and the owner's study/office further forward with access to the foredeck. The modern galley is amidships on the port side.

Boat deck: Two tenders, a jetski, and a Laser sailing dinghy are carried aft, with a single centerline crane. A large C-shaped settee forward of the tenders faces two breakfast tables aft of the superstructure. Full walkaround decks, with companionway stairs from the aft main deck on each side, surround this superstructure with the dining saloon occupying the aft section. A short corridor leads forward on the port side, with a day head and dumb waiter from the galley below, inboard, to the wheelhouse . The captain's ensuite cabin is behind the bridge on the starboard side. A very large Portuguese bridge is forward of the wheelhouse with a companionway stairs on the port side to the foredeck.

Flybridge : A central staircase aft leads up to this expansive area. Aft are generous cushioned sunning pads with L-shaped settees and cocktail tables on each side. The

central funnel, now concealing only some emergency equipment and the air intake to the engine room since the exhausts have been rerouted to the waterline, provides a visual break. Forward of this is a built-in six person Jacuzzi.

(Show to: **Public**)

## Accommodations

All of the owner and guest accommodation spaces in SAVVY are finished to a very high yacht standard. All paneling and cabinetry with detailed moldings is in American cherry. All overheads are in framed white painted panels with halogen lighting. All areas with the exception of the dining saloon are carpeted. The main saloon and lobby are in seafoam aqua, and all staterooms are in off white.

**MAIN SALOON:** This room occupies the full beam of the yacht at the forward end. A television rises at the touch of a button from the adjacent sideboard, aft of which a staircase leads down to the guest accommodation. Opposite two bar stools face a handsome bar in the starboard aft corner of the room alongside the double doors leading to the aft deck. Two further comfortable arm chairs are either side of a mahogany games table in the starboard forward corner.

**DINING SALOON:** This is a charming room with a bold and intricate parquet floor in a variety of hardwoods. Located in the after part of the upper deck superstructure, spectacular views are afforded by six large windows. A door leads from here to the boat deck and the flybridge above.

**MASTER STATEROOM:** The owner's quarters form a private suite forward on the main deck. The stateroom enjoys the full beam of the yacht with large windows to port and starboard. A king sized bed, dressing table, small settee, huge closets, locker and drawer storage, and a large plasma screen entertainment center with Bose surround sound are the highlights. Forward to port is the owner's bathroom, finished like the rest of the yacht in American cherry. Twin sinks with a pale cream marble countertop, head and bidet, a whirlpool bath, huge marble shower with multiple showerheads, and a very interesting checkboard marble and cherry wood floor. Further forward up a few steps is the owner's study with a partners' desk and two chairs, computer terminal, book shelves, a brown leather armchair and a door to the starboard side deck.

**VIP STATEROOM:** On the lower deck, aft, this full beam stateroom has a king sized bed, flat screen television, walk-in closet, and ensuite bathroom with marble shower.

**GUEST STATEROOM 1:** On the starboard side with twin berths, this spacious cabin is separated from the engine room bulkhead by its ensuite marble bathroom providing a very quiet space even underway.

GUEST STATEROOM 2: On the port side; similar to Guest Staterooml.

(Show to: **Public**)

Galley

GALLEY: Amidships on the port side and full equipped for catering to large parties. Equipment includes: Comeda BHC433A stainless steel dishwasher Silko electric stainless steel commercial stove, griddle and deep fryer Twin stainless steel sinks Insinkerator garbage disposal Dumb waiter Kitchen Aid heavy duty mixer Commercia I grade coffee maker Robot Coup R101 food processor Lenor cassette/radio player (2 ) Foster refrigerators (2 ) Foster freezers Sharp microwave oven CO2 Fire Control System Fridge/freezer room on lower deck forward of crew mess (2 ) Miele clothes washers on lower deck forward (2 ) Miele clothes dryers on lower deck forward

(Show to: **Public**)

Crew Quarters

CREW QUARTERS: The captain's cabin is to starboard, aft of the wheelhouse with a double berth, desk and chair, and an ensuite shower/head. The captain's cabin is to starboard, aft of the wheelhouse, ensuite head and shower. The engineer's cabin is to port on the lower deck, forward of the engine room, with a single berth, desk, and an ensuite head and shower. One crew cabin has upper and lower single berths, and a separate head and shower. A second crew cabin has two upper and two lower single berths, and a separate head and shower. The crew mess is to starboard on the lower deck forward of the engine room

(Show to: **Public**)

Electronics

ELECTRONICS: CIE telephone switchboard (2 ) Furuno ARPA radar Simrad AP20 autopilot Sailor HC4500 MF/HF control unit (hf) Sailor RT 4822 VHF-DSC Simrad Robertson R135mkz Rudder Angle Indicator TrorFEPIRB 9ghz transponder RGC Gyro compass and inverter Periscope steering compass Probe Interphase DS Furuno Navnet C-map

36nm radar %Ai/repeater in owners study EuroNav Simrad Televideo video camera switcher with alarms Fire alarm annunciator control Immarsat Mini M satellite communication system Ce llu la r telephone Furuno GPS system Simrad Gyro compass Na v5 GMDSS Navtex recorder ICS Electronics Ltd. Sailor DT4646E Data Terminal Sailor TT3623CM Ca p sa t GMDSS Dual Mode radio Furuno CMAP NT Navnet radar, 36nm range (ARPA) for stabilizer header, interfaced with autopilot

(Show to: **Public**)

Technical

**STABILIZERS:** Rodriguez hydraulic stabilizers with electronic control

**ELECTRICAL:** ( 2 ) 55kw Northern Lights diesel generators 2003 220v AC 50Hz Canalup i battery chargers 220v/50hz ASEA Universal converter for shore power

**DECK & HULL:** D vid McClure Ltd anchor windlass ( 2 ) 250 kg Navy type anchors ( 2 ) 120 m 16mm stud link chain

**MECHANICAL EQUIPMENT:** ( 2 ) Caterpillar 3408 540hp diesel engines Hamman sewage treatment system ( 2 ) Idromar 120L/hr output watermakers Co n d a ria air conditioning Wesmar bow thruster Rodriguez controlled active fin stabilizer Chiavari crane Hydraulic extending passerelle

**TENDERS & WATER SPORTS:** A Comitti varnished mahogany speed boat w/175hp jet drive Zodiac 480RIB w/Yamaha 4 stroke 80hp **SAFETY AND FIRE PROTECTION:** Safety equipment on board SAVVY to comply with Class Regulations and MCA Code of Practice for the Safety of Commercial Yachts includes: ( 5 ) Life raft systems He ie n Larssen Flexifog fire fighting system le te c smoke alarm system 6 kg dry chemical extinguisher in each compartment 10 kg CO2 extinguisher in engine room, wheelhouse, crew mess Flexifog nitrogen water mist system throughout ( 2 ) 220 volt pumps wiring main ( 2 0 ) Adult lifejackets ( 2 ) Child lifejackets ( 2 ) Jotron 9 ghz SARI transponders Pains Wessex flares ( 2 ) 280 volt fire pumps w/hydrants & fire hoses

## Основная информация

**Тип судна:** Cruising Yacht

**Подкатегория:** Long Range Cruiser

**Модельный год:** 1966

## Размеры

---

**Длина общая:** 127' (38.71mm)

**Макс. осадка:** 8' 5" (2.57mm)

## Скорость, вместимость и масса

---

**Крейс. скорость:** 10 Knots Kts. (12 MPH)

**Дальность на крейсерской скорости:** 4000

**Макс. скорость:** 13 Knots Kts. (15 MPH)

**Вместимость воды:** 3500 Gallons

**Объем топливного бака:** 7936 Gal  
Gallons

## Размещение

---

**Всего кают:** 5

**Всего коек:** 6

**Спальные места:** 10

**Всего ком. состава:** 5

**Каюты экипажа:** 1

**Койки экипажа:** 7

**Комм. состав экипажа:** 4

## Корпус и палуба

---

**Материал корпуса:** Steel

**Материал палубы:** Teak

**Цвет корпуса:** white

**Дизайнер корпуса:** Camper &  
Nicholsons

## Информация о двигателе

---

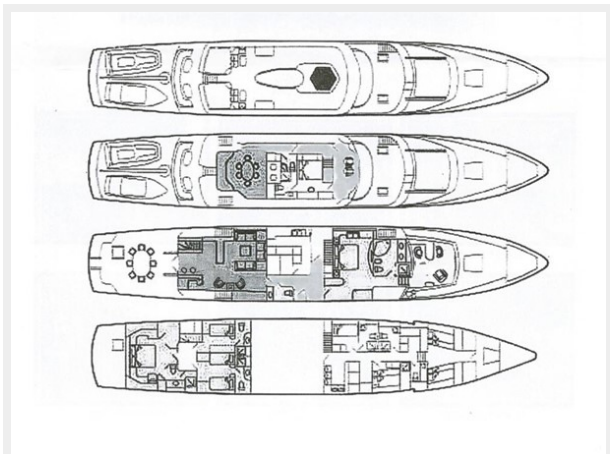
**Двигатели:** 2

**Производитель:** Caterpillar

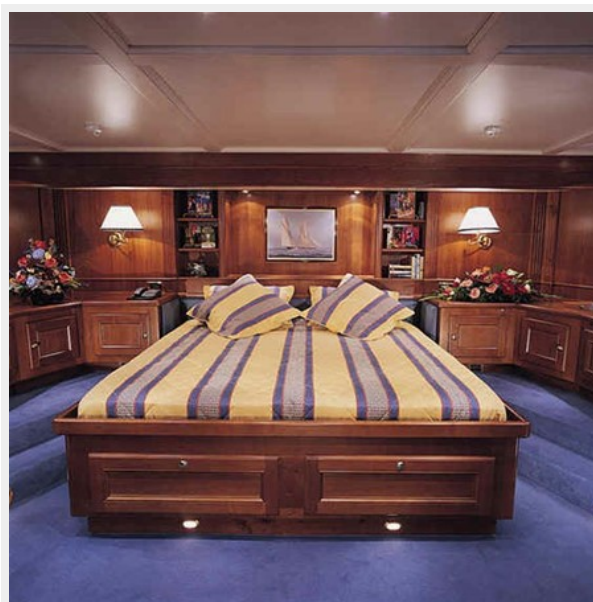
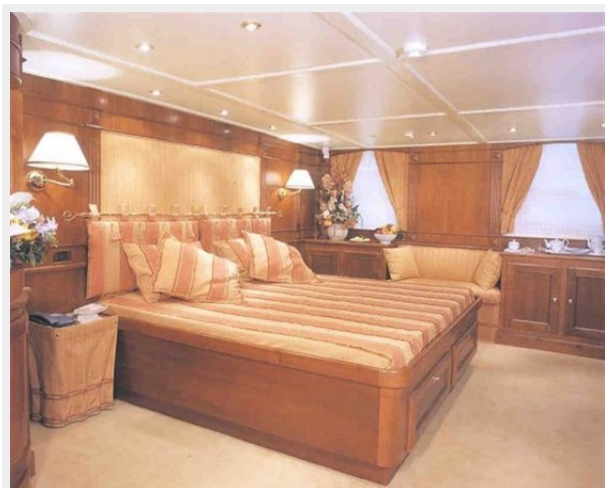
**Тип двигателя:** Inboard

**Тип топлива:** Diesel

# ФОТОГРАФИИ









# КОНТАКТЫ

---

Андрей Шестаков (Andrey Shestakov) – ведущий яхтенный брокер отдела продаж яхт и судов компании Shestakov Yacht Sales Inc. Официальный представитель Shestakov Yacht Sales Inc. для русскоговорящих клиентов в центральном офисе компании в Майами/Форт Лодердейл/Флорида/США.

## Контактная информация

---

Email: **andrey@shestakovyachtsales.com**

Web: [shestakovyachtsales.com](http://shestakovyachtsales.com)

## Телефоны

---

Краснодарский край: **+7(918)465-66-44**

США, Майами, Флорида: **+1(954)274-4435**

## Время работы

---

Понедельник – Суббота: **9:00 - 21:00** EDT

Воскресенье: **Закрето**

## Адрес

---



Harbour Towne Marina, 850 NE 3rd St, STE 213, Dania, FL 33004