

UNFORGETTABLE — FERRETTI



Судостроитель: FERRETTI

Год постройки: 2006

Модель: Моторная яхта

Цена: **ЦЕНА ЯХТЫ ПО ЗАПРОСУ**

Местонахождение: Antigua and Barbuda

Длина общая: 83' 0" (25.30m)

Ширина: 20' 6" (6.25m)

Мин. осадка: 6' 2" (1.88m)

Крейс. скорость: 30 Kts. (35 MPH)

Макс. скорость: 33 Kts. (38 MPH)

Купить **Unforgettable — FERRETTI** а также выбрать подходящую вам яхту из нашего каталога яхт вам поможет опытный яхтенный брокер Андрей Шестаков. На сегодняшний день компания **Shestakov Yacht Sales Inc.** имеет большое количество яхт в собственном списке продаж, а также тесно сотрудничает со всеми крупными яхтенными производителями по всему миру.

Для того чтобы купить яхту **Unforgettable — FERRETTI** а также проконсультироваться по любому вопросу связанному с покупкой, продажей, чартером яхт позвоните по телефону **+7(918)465-66-44**.

ОГЛАВЛЕНИЕ

ОГЛАВЛЕНИЕ	2
ХАРАКТЕРИСТИКИ	5
Основная информация	5
Размеры	5
Скорость, вместимость и масса	5
Размещение	5
Корпус и палуба	6
Информация о двигателе	6
ПОДРОБНОЕ ОПИСАНИЕ	7
Description	7
Hull & Deck Equipment:	7
Fly Bridge:	8
Salon:	8
Day Head:	8
Dining:	8
Galley:	8
Lobby:	9
Bridge:	9
Master Stateroom:	9
Master Bathroom:	9
VIP Guest Cabin at Bow:	9
Central Guest Cabins (No.2):	10
Guest Bathrooms (No.2) & VIP Bathroom:	10
Crew Cabins at Stern (No.2):	10
Crew Bathroom:	10
Crew Lounge	10
Engine & Mechanical Equipment	10
Systems Compartment:	11

Equipment:	11
American Standard Modifications:	11
Forepeak:	11
Lazarette:	12
Broker Remarks	12
Исключения	12
Отказ от ответственности	12
ФОТОГРАФИИ	13
Fly Bridge	13
Flybridge	13
Fly Bridge Control	13
Salon	13
Salon	13
Salon	13
Stair to Flybridge	14
Dining	14
Galley	14
Galley	14
Bridge Controls	14
Bridge Seating	14
Master Stateroom	15
Master Stateroom	15
Master Bathroom	15
Master Stateroom	15
Master Bathroom	16
Master Bathroom	16
VIP Stateroom	16
VIP Stateroom	16
Guest Cabin	16

Guest Cabin	16
Guest Bathroom	17
Guest Bathroom	17
Guest Bathroom	17
Guest Bathroom	17
VIP Bathroom	18
VIP Bathroom	18
Engine	18
Engine	18
Engine	18
КОНТАКТЫ	19
Контактная информация	19
Телефоны	19
Время работы	19
Адрес	19

ХАРАКТЕРИСТИКИ

Основная информация

Тип судна: Моторная яхта

Модельный год: 2006

Год постройки: 2006

Страна: Antigua and Barbuda

Открытая палуба мостика: Да

Размеры

Длина общая: 83' 0" (25.30m)

Ширина: 20' 6" (6.25m)

Мин. осадка: 6' 2" (1.88m)

Длина привального бруса: 83' 0"
(25.30m)

Скорость, вместимость и масса

Крейс. скорость: 30 Kts. (35 MPH)

Макс. скорость: 33 Kts. (38 MPH)

Водоизмещение: 167551 Pounds

Вместимость воды: 343 Gallons

Объем топливного бака: 2008 Gallons

Размещение

Всего кают: 4

Всего коек: 6

Спальные места: 8

Всего ком. состава: 5

Койки экипажа: 3

Спальных мест экипажа: 3

Комм. состав экипажа: 1

Корпус и палуба

Материал корпуса: Fiberglass

Цвет корпуса: Cream

Информация о двигателе

Двигатели: 2

Производитель: MTU

Модель: Mhp 16V 2000 M91

Тип двигателя: Inboard

Тип топлива: Diesel

ПОДРОБНОЕ ОПИСАНИЕ

Description

The Ferretti 830 was the first yacht of the Ferretti range to have the new open view window in the master cabin that ensures a completely unique view of the sea both from the bed, facing the window, and from the bathroom, with two communicating sections. The slender contours of the flying bridge are due to the unusual positioning of the roll bar towards the bow which gives a valuable advantage creating an area of shade over the sofa during the hottest hours. The layout of the navigation bridge has also been reassessed and unites practicality and aesthetics in a pleasingly cozy way. Inside the Ferretti style is immediately obvious with rich paneling in polished cherry-wood and extremely detailed fittings. Apart from the ample master cabin there are also two guest cabins and one VIP cabin with a double bed, all with en suite bathroom and shower. The vast salon is fitted out with every comfort including a plasma TV and up to eight people can dine in absolute tranquility. The sea becomes a real limitless pleasure with the Ferretti 830.

NOT FOR SALE TO US RESIDENTS WHILE IN US WATERS.

Hull & Deck Equipment:

203Vshor line cable mt. 15Access to swim platform through fixed stairs, steps in teak & stainless steel handrail Aft sliding door in stainless steel Anchors Bruce (1kg. 50-1kg.30) w/ 2 chains (mt. 100 & mt. 75) w/ washing2 Boat hooks housedBow pulpit w/ side rails Bow rollerCanopies for protection of the side & front windows in the bridgeChain washingChock for hauling out at stern & lateral roller chockCleats mid ship (3 each side)4 Cockpit chairsCockpit lightsCushions w/ backrest for cockpit benches Electric windlass 2500 W w/ controls in foredeck, bridge & Flying bridge (2)Electrohydraulic telescopic gangway in painted stainless steel & teak w/ remote controlExtendible teak cockpit table w/ storage for chairsExternal acoustic alarm for bilge water level fore & aftFenders (10) and spherical fenders (2)Foot-controlled capstans (2) w/ switch (700W)Fully fitted stern seat w/ lockers & sink w/ hot/cold salt waterGarage at stern w/ hydraulic hatch & storage for Jet Ski or tender (optional)Horn w/ compressor Hydraulic bow thruster (40HP)Ice maker in the cockpit under the stairs for the flyIndirect deck lightingLadder for the fly bridge in fiberglass w/ the steps in teak & stainless steel handrail Mooring lines (4) of mt. 12Navigation lightsPerimetrical curtain rod for canopies Remote shut off for engines & generator fuel hoses Salt-water outlet at transom, in the forepeak & in the galleyShower w/ hot/cold waterSliding side exit doors (2) w/ manual movementSolid teak deck surface and cockpit floorStainless steel deck equipmentStainless steel hardwareStereo loudspeakers (2) in cockpit Storage w/ door in the cockpit Sunlounge pad at bow w/ sunbathing cushionsWindshield w/ stainless steel frames & glued windows

Fly Bridge:

Automatic Dual Station pilot Raytheon ST6001+Car stereo CD w/ watertight panel & 2 loudspeakers Cigarette lighter outlet 12V Cocktail cabinet w/ sink, fridge, electric cooking top 230v & lockers Cover for helmsman seat, bench & coach Detachable & directable spotlight Electrical operated fully directable forward searchlight Electrohydraulic davit for lifting & launching of inflatable tender from Fly & lazarette (capacity load kg. 600) Electrohydraulic powered steering Electronic compass Raytheon ST60 Electronic controls for engine clutch and throttle Electronic digital chain counter Fiberglass radar arch Flag pole Flagstaff Helmsman bench seat (2 seats) Housed life ring, light buoy 7 floating rope Life jackets (16) Life rafts for 16 people Lights on the fly Plexiglas & stainless front deflector with side panels Railing Raymarine E-120 GPS/ Plotter Rudder angle indicator Salon and cockpit stairs skylight Second control station w/ instrument and alarms Sunlounge pad with sunbathing cushions Tridata Raytheon ST60 repeater (Depth sounder, speed log & water temperature) TV antenna U-shaped sofa w/ table VHF

Salon:

Aft sliding door & window, both w/ stainless steel frames Cooler w/ drawer 75 lt. 24V Dolby Surround sound Hi-Fi Bose Lifestyle 28 Digital w/ 6 loudspeakers in salon & 2 in the cockpit Fully fitted carpets Headlining Leather armchair L-shaped leather sofa Plisse curtains Table in leather w/ wooden tray TV LCD 32 in. Various cabinets, housing TV w/ bottle rack "Venetian" blinds on aft window

Day Head:

Electric ceramic WC (w/ fresh water) Floor in teak, mat painted Mirror Overhead lockers and shelves Plisse curtains Washbasin w/ marble countertop

Dining:

Cabinets w/ shelves Chairs (8) Fully fitted carpet Table

Galley:

Car-Stereo CD w/ 2 loudspeakers Ceramic cooking top w/ 4 rings & pan-holder Complete set of ceramic crockery & plates, glasses & stainless steel cutlery, for 12 people Cupboards Dishwasher for 8 Easy clean walls Electric/microwave oven Electrical panel Extractor fan ducted externally (220V) Fridge lt. 276 & freezer lt. 74 230V (24 through inverter) Garbage compactor Granite work counter w/ 2 sinks and draining board Lacquered headlining Overhead lockers Rubbish crusher Salt water outlet Sliding side exit door w/ manual movement

Lobby:

Cabinet w/ shelves Fully fitted carpet Sliding side exit door w/ manual movement Stairs to the fly

Bridge:

Automatic pilot Raytheon ST7001 + w/ interface Barometer, clock & hygrometer Chart/Plotter Geonav LCD colour 15 in. w/ GPS Cigarette lighter outlet 12V Control station w/ full instrumentation C-shaped sofa w/ table Ecosounder colour in Navnet monitor display Electrohydraulic powered steering Electronic controls for engine clutch & throttle Electronic digital chain counter Fully fitted carpet Helmsman seat w/ electrical movement Instant parallel battery Integrated system for managing and monitoring of the electric system (NAVIOP) w/ 15 in. touch screen display Magnetical compass Openable windows (2) Maptech GPS/Plotter Raymarine E-120 GPS/Plotter with repaeter on Flybridge Radar 48 miles w/ display LCD 15 in. Rudder angle indicator Switchboard Telephone interface GSM/GPRS/FAX/PCDATA Tridata Raytheon ST60 (Depth sounder, speed Log, & water temperature) VHF Windshield wipers w/ washers (2) & timer Wooden paneled aft bulkhead Wooded paneled sliding door

Master Stateroom:

Bedside tables (2) w/ drawers Book shelf Chaise lounge Curtains w/ wrinkled finish Double bed w/ mattress, pillows & bedspread Drawers underneath the bed Dressing-table w/ chair Electric blinds in glass partition in bedhead b/n cabin & bathroom Fixed window w/ 2 openable portholes in stainless steel w/ roll-up covers Fully fitted carpet Headlining LCD colour TV 20 in. Mini Hi-Fi system Mirrors (2) Reading lights Safe deposit box TV - & 230V outlet Ventilation under the bed Walk-in wardrobes (2)

Master Bathroom:

Ceramic bidet Electric ceramic WC (w/ fresh water) Floor in teak, mat painted Mirrors Overhead lockers & shelves Plisse curtains Porthole Washbasins (2) w/ marble countertop Waste water level gauge **Master Bathroom Area:** Bath w/ handheld shower for 2 Fixed window w/ 2 openable portholes in stainless steel w/ roll-up covers

VIP Guest Cabin at Bow:

Armchair on the right Cabinets Car-Stereo CD w/ 2 loudspeakers Chest of drawers Double bed w/ mattress, pillows & bedspread Escape hatch w/ cover & folding ladder Fully fitted carpet Headboard mirror over bed Headlining Mirrors (2) Plisse curtains Reading lights Safe deposit box Stainless steel openable portholes (2) w/ covers Storage underneath bed TV- & 230V

outlet Vanity furniture w/ chair on the left Ventilation under bed Walk-in wardrobe

Central Guest Cabins (No.2):

Beds (2) w/ mattresses, pillows & bedspreads Car-stereo CD w/ 2 loudspeakers Chests of drawers (2) Fully fitted carpets Mirror Overhead lockers Plisse curtains Shelves Stainless steel openable portholes (2) w/ covers TV- & 230V outlet Ventilation under bed Wardrobe

Guest Bathrooms (No.2) & VIP Bathroom:

Ceramic bidet Electric ceramic WC (w/ fresh water) Floor in teak, mat painted Mirrors Overhead lockers & shelves Plisse curtains Separate shower w/ door Stainless steel openable porthole Washbasin w/ marble countertop Waste water level gauge

Crew Cabins at Stern (No.2):

Bed (2 bunk beds in the stbd cabin) w/ mattresses, pillow & bedspread Lockers & storages Plisse curtains Stainless steel openable porthole w/ cover

Crew Bathroom:

Electric marine WC (w/ fresh water) Plisse curtains Shower Stainless steel openable porthole Storage Washbasin

Crew Lounge

Dinette w/ sofa & table Door to the systems compartment Various lockers Washing machine w/ dryer

Engine & Mechanical Equipment

Air intakes w/ remote controlled shut off Bilge pump Algae X Fuel Polishing System Change over valve to allow engine to pump water from the bilge Electric-self-locking blowers (2) Fresh-water outlet for filling & washing Fuel tank in fiberglass 2008 gal. w/ settler b/ master cabin and engine room Inspection lights Portable lamp Raw water engine filters (2) Separ engine filters Tool kit, if supplied by engine manufacture Watertight bulkhead abaft (systems room included) Watertight insulated bulkhead ahead Access door to the engine room (w/ fixed porthole) Access hatch from cockpit Auxiliary electric generator 23 KW Main electric generator 23 KW

Systems Compartment:

Water maker 130 lt./h Watertight bulkhead abaft Watertight door from crew area Workshop bench fitted w/ vice & a selection of tools

Equipment:

Air conditioning throughout Anti Rolling Gyro Mitsubishi (2) MSM-4000 + MSM-4000 Autoclave pump 24V for salt water at bow, transom & galley Autoclave pump 24V fresh water Bilge pump system w/ 1 electric self-priming pump w/ 6 cocks (bow-clear waters-waste waters-engines-lazarette-crew cabin) Bilge pump system w/ 5 electro-automatic diving pumps Cathodic protection w/ zinc anodes on the shafts and flaps Electric system consisting of: 1000Ah 24V bank of batteries for service (10) 100A 24V automatic battery charger 200Ah 12V auxiliary generator batteries 200Ah 12V main generator batteries 24V lighting throughout 600Ah 24V engine starting batteries (6) Auxiliary generator 23 KW Battery disconnecting electronic & mechanical switches Electric outlets 230V throughout Inverter 24Vdc/ 203Vac 1500W for fridge Inverter 24Vdc/ 203Vac 3000W w/ battery charger combi 100A Main generator 23 KW Mechanical & electric battery parallel switch Shore plug 63A 230V Electric WC system w/ fresh water Electrohydraulic powered steering Fire extinguishers Fresh-water tank lt. 1300 Gray water tank (330 lt.) Holding tank (300 lt.) w/ gauge (3/4 & full) Hot water systems w/ water heater 80 lt. 230V (2) Remote engine & generator shut down Silenced underwater exhausts Smoke detection alarm in the engine room Stuffing box w/ dripless shaft seal Trim tabs (Flaps) TV shore supply VHF (2) Waste water system w/ automatic electric & manual p

American Standard Modifications:

Automatic shore cables (2) 240V (glendinning) Auxiliary generator 23Kw Kohler Bathroom floors in gloss painted wood w/ logo Boarding door on both sides Centered wc's, removal of bidets in VIP & guest heads Closet w/ shelf in place of cooler in the salon Coastguard I.D. hull plate Cockpit table in gloss painted wood Control station in the cockpit Dishwasher Dual fuel filters w/ bi-pass Electric barbeque on the fly External cushions w. draining foam Generator 23Kw Kohler Ground faults interruptors in all the heads, galley & engine room Hi-Fi surround system Bose 3-2-1 in master & VIP cabin Hydromassage bathtub w/ heater on fly Microwave/convection GE oven in the galley Mirrored window in stern Phone socket in salon & master cabin Plotter + depth sounder Maptech Pop-up mechanism for plasma TV in the salon Racor filters for generators Radar Maptech 48nm Raritan ice maker connected to water tank Refrigerator GE in the galley Roman blinds in salon & master cabin Spotlight forward electrically controlled Stainless steel rubbing strake on side exhausts & spoiler Stereo CD in guest & crew's cabin Thumb locks in all cabins & heads door TV socket in all the cabins U.S. coastguard safety package Washer Water maker 220 lt/h Water-chilled air conditioning 144,000 BTU

Forepeak:

Anchor chain lockers (2) Inspection covers (2) Salt water outlet Shelves Tube for hanging mooring lines Winch push-button controls

Lazarette:

Hydraulic door w/ teak internal side

Broker Remarks

"Unforgettable" is a perfect example of fine Italian craftsmanship. This one owner yacht has been maintained to the highest standard since delivery. She has low hours and is in excellent condition. "Unforgettable" is the only U.S. spec 830 Ferretti on the market. Just completed yard service with upgrades to the electrical system. NOT FOR SALE TO US RESIDENTS WHILE IN US WATERS.

Исключения

При продаже яхты исключаются личные вещи владельца.

Отказ от ответственности

Компания предоставляет описание судна или яхты добросовестно, но не может гарантировать точность этой информации, а также не ручается за техническое состояние. Покупатель должен проинструктировать своих агентов или оценщиков исследовать представленную информацию более подробно, по собственному желанию. Продажа судна или яхты, изменение цены или снятие с продажи будет происходить без предварительного уведомления.

ФОТОГРАФИИ

Flybridge



Fly Bridge



Fly Bridge Control



Salon



Salon



Salon



Stair to Flybridge



Dining



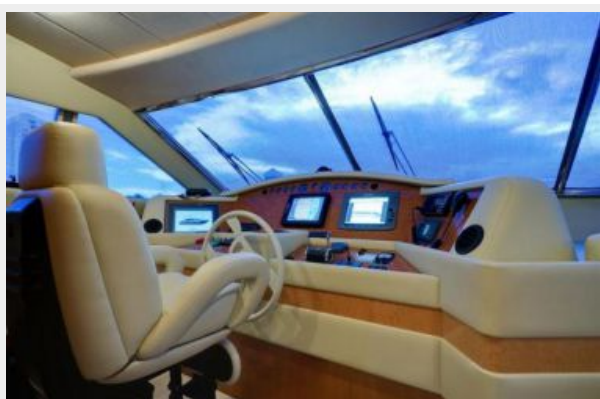
Galley



Galley



Bridge Controls



Bridge Seating



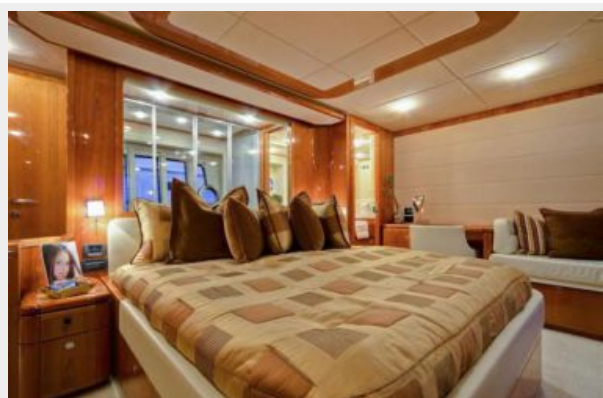
Master Stateroom



Master Stateroom



Master Stateroom



Master Bathroom



Master Bathroom



Master Bathroom



VIP Stateroom



VIP Stateroom



Guest Cabin



Guest Cabin



Guest Bathroom



Guest Bathroom



Guest Bathroom



Guest Bathroom



VIP Bathroom



VIP Bathroom



Engine



Engine



Engine



КОНТАКТЫ

Андрей Шестаков (Andrey Shestakov) – ведущий яхтенный брокер отдела продаж яхт и судов компании Shestakov Yacht Sales Inc. Официальный представитель Shestakov Yacht Sales Inc. для русскоговорящих клиентов в центральном офисе компании в Майами/Форт Лодердейл/Флорида/США.

Контактная информация

Email: andrey@shestakovyachtsales.com

Web: shestakovyachtsales.com

Телефоны

Краснодарский край: **+7(918)465-66-44**

США, Майами, Флорида: **+1(954)274-4435**

Время работы

Понедельник – Суббота: **9:00 - 21:00**
EDT

Воскресенье: **Закрито**

Адрес



Harbour Towne Marina, 850 NE 3rd St,
STE 213, Dania, FL 33004