

## BLUME-N-GOOD — HATTERAS



**Builder:** HATTERAS

**Year Built:** 2007

**Model:** Sport Fisherman

**Price:** PRICE ON APPLICATION

**Location:** United States

**LOA:** 68' 0" (20.73m)

**Beam:** 21' 6" (6.55m)

**Min Draft:** 5' 2" (1.57m)

**Max Draft:** 5' 4" (1.63m)

**Cruise Speed:** 27 Kts. (31 MPH)

**Max Speed:** 32 Kts. (37 MPH)

Our experienced yacht broker, Andrey Shestakov, will help you choose and buy a yacht that best suits your needs **Blume-N-Good — HATTERAS** from our catalogue. Presently, at Shestakov Yacht Sales Inc., we have a wide variety of yachts available on our sale's list. We also work in close contact with all the big yacht manufacturers from all over the world.

If you would like to buy a yacht **Blume-N-Good — HATTERAS** or would like help answering any questions concerning purchasing, selling or chartering a yacht, please call **+1(954)274-4435**

# TABLE OF CONTENTS

TABLE OF CONTENTS	2
SPECIFICATIONS	6
Basic Information	6
Dimensions	6
Speed, Capacities and Weight	6
Accommodations	6
Hull and Deck Information	7
Engine Information	7
DETAILED INFORMATION	8
Vessel Walkthrough	8
Cockpit	8
Salon	9
Galley	9
Dinette	10
Lower Companionway	10
Master Stateroom	10
Master Head	11
Port Guest Stateroom - Crew/Guests	11
Port Guest Head	12
Starboard Guest Stateroom	12
Starboard Head	12
VIP Stateroom	13
VIP Head	13
Flybridge	13
Tower	14
Electronics and Navigational Equipment	14
Electrical System	15
Engine /Mechanical Equipment	15

Hull and Exterior	16
Exclusions	16
Exclusions	16
Disclaimer	16
PHOTOS	18
Blume N Good Profile	18
Fighting Chair	18
Cockpit	18
Rocket Launcher	18
Salon Aft	18
Salon U-Shaped Couch	18
Salon Forward	18
Galley	18
Galley	19
Galley/Dinette	19
Companionway Wood Floors/Stairs	19
Dinette TV	19
Master Stateroom	19
Master Stateroom (2)	19
Master Stateroom Entrance	19
Master Stateroom to Port	19
Master Head	20
Master Head/ Shower	20
Port Stateroom	20
Day Head	20
Starboard Head	20
Strb. Guestroom - Twin Singles	20
Forward VIP Stateroom (2)	21
Forward VIP Stateroom	21

VIP Fwd Strm Head	21
VIP Fwd Strm Head/Shower	21
Washer/Dryer	21
Flybridge Helm	21
Teak Helm Pod	22
Twin Helm Chairs	22
Flybridge Table	22
Flybridge Seating	22
Flybridge - Strb Side	22
Center Ladder	22
Tower Console	22
Radar/Twin Life Rafts	22
Tower Console	23
Tower Seating	23
Bow	23
Aft Shade/Center Ladder	23
Aft Shade	23
Engine Room	23
Engine Room	23
Engine Room	23
Engine Room	24
Starboard Engine	24
Engine Room	24
Port Engine	24
Engine Room	24
Engine Room	24
Transom Name	24
Bow view	24
Profile - Strb Side	25

---

CONTACTS	26
-----	-----
Contact details	26
-----	-----
Telephones	26
-----	-----
Office hours	26
-----	-----
Address	26
-----	-----

---

## SPECIFICATIONS

---

### Basic Information

---

<b>Category:</b> Sport Fisherman	<b>Sub Category:</b> Convertible
<b>Model Year:</b> 2007	<b>Year Built:</b> 2007
<b>Country:</b> United States	<b>Vessel Top:</b> Hardtop
<b>Fly Bridge:</b> Yes	

### Dimensions

---

<b>LOA:</b> 68' 0" (20.73m)	<b>Beam:</b> 21' 6" (6.55m)
<b>Min Draft:</b> 5' 2" (1.57m)	<b>Max Draft:</b> 5' 4" (1.63m)
<b>MFG Length:</b> 68' 0" (20.73m)	

### Speed, Capacities and Weight

---

<b>Cruise Speed:</b> 27 Kts. (31 MPH)	<b>Cruise Speed RPM:</b> 2000 Kts.
<b>Max Speed:</b> 32 Kts. (37 MPH)	<b>Max Speed RPM:</b> 2300 Kts.
<b>Displacement:</b> 126500 Pounds	<b>Gross Tonnage:</b> 126500 Pounds
<b>Water Capacity:</b> 400 Gallons	<b>Holding Tank:</b> 125 Gallons
<b>Fuel Capacity:</b> 2100 Gallons	

### Accommodations

---

<b>Total Cabins:</b> 4	<b>Total Berths:</b> 6
<b>Sleeps:</b> 8	<b>Total Heads:</b> 4
<b>Crew Berths:</b> 2	<b>Crew Sleeps:</b> 1
<b>Crew Heads:</b> 1	

---

## Hull and Deck Information

---

**Hull Material:** Fiberglass

**Deck Material:** Fiberglass

**Hull Configuration:** Modified V-Hull

**Hull Color:** White

**Hull Finish:** Fiberglass

**Hull Designer:** Hatteras Yachts

**Exterior Designer:** Hatteras

**Interior Designer:** Hatteras

---

## Engine Information

---

**Engines:** 2

**Manufacturer:** Caterpillar

**Model:** C-32A

**Engine Type:** Inboard

**Fuel Type:** Diesel

## DETAILED INFORMATION

### Vessel Walkthrough

"**BLUME -N- GOOD**" is a 2007 68CV Hatteras that was custom built for the original owner. The equipment list is extensive. All the custom features are labeled with "upgrade" as you preview the listing. The attention to detail throughout this build allows an owner to not only enjoy the thrill of catching that next marlin, but also entertaining his family and friends in luxurious comfort and style.

"**BLUME -N- GOOD**" is powered by Twin Caterpillar C32A's (1800hp) Hours: Port/1575 - Starboard/1575. Includes a CAT Platinum Advantage warranty, expires March 31, 2016 or 2230 hours, whichever comes first. The cockpit is outfitted with a BlueWater fighting chair, for that day of Marlin fishing; and converts to a black carpeted cockpit outfitted with a teak table & chairs seating eight to entertain or dine al fresco. The cockpit is set up with twin 65 inch fish boxes with an Eskimo ice chipper in the starboard fish box; live well, two freezers, refrigerated step box, and teak mezzanine & teak coaming boards. Tower & cockpit cameras feed to a DVR that enables you to capture on video those big catches, and above the comfortable mezzanine seating are misters and air conditioning.

"**BLUME -N- GOOD**" has a sliding door from the cockpit that enters you into the salon. The floors are equipped with custom laid Peruvian Walnut wood that extend through the galley, dinette and down the lit stairwell to the lower companion way. The elegant decor is seen with raised African mahogany panel cabinetry throughout the entire vessel along with black galaxy granite counter tops found in the salon, galley, and each stateroom head floor. Custom cherry leather seating in both the salon and dinette continues the plush decor throughout this yacht. The salon features a 42 inch plasma HD TV with full surround sound and a second 32 inch LCD TV located in the dinette bulkhead which can also be used as a computer monitor with a wireless mouse & keyboard. Wi-Fi is equipped throughout along with SAT phone. Fully equipped galley has 4 under counter subzero refrigerator drawers & 2 under counter subzero freezer drawers with one additional freezer located in the starboard port locker. A full size wine cooler is also easily accessible in the starboard attic locker. Going down the lit Peruvian Walnut staircase to the custom staterooms, you enter a full beam, elegantly decorated master and three plush custom guest staterooms. Each one with its own private luxurious head, granite floors and counter tops.

"**BLUME -N- GOOD**" offers the right electronics to make that long range cruise or handle any day of offshore fishing. It is also equipped with air conditioning and plenty of comfortable U-shaped seating. To access the tower from the bridge the owner selected a center ladder to make the tower more accessible to everyone. "**BLUME -N- GOOD**" is a very unique 68CV Hatteras, and there has not been another 68CV Hatteras with this list of custom equipment, and as fine an eye to detail. Take the time to review the entire listing as it will display all the custom and additional equipment that has been put into this 2007 68CV Hatteras.

\*\*\*\*\* **WILL CONSIDER ALL TRADES** \*\*\*\*\*

**View a slide show of Blume N Good by following the link below:** [http://albums.phanfare.com/slideshow.aspx?i=1&pw=6OZbeoQd&db=1&a\\_id=4557503&s\\_id=5015968&q=http%3A//albums.phanfare.com/isolated/6OZbeoQd/1/4557503](http://albums.phanfare.com/slideshow.aspx?i=1&pw=6OZbeoQd&db=1&a_id=4557503&s_id=5015968&q=http%3A//albums.phanfare.com/isolated/6OZbeoQd/1/4557503)

### Cockpit

The cockpit of this 68CV is one of a kind. This area is versatile for fishing or entertaining. There is an interchangeable custom Bluewater teak fighting chair, teak rocket launcher, and a custom made teak table and chairs for 8. To add to this versatility, black carpet takes this area to a elegant setting. Teak natural finish is found on the mezzanine and coaming boards and of course upgrades in underwater lighting, misters, A/C blowers, and all the freezers, bait boxes and fishing necessities are found for a day or week of fishing.

- Storage in steps to deckhouse with refrigerated box in top step **UPGRADE**
- 6 Each Garrett Pompanette wing board rod holders **UPGRADE**
- Teak coaming & covering boards natural finish, Carolina Edition **UPGRADE**
- Hand held shower hot and cold **UPGRADE**
- Teak Mezzanine natural finish Carolina Edition **UPGRADE**
- ESKIMO ice machine 600 lbs a day **UPGRADE**
- Cockpit overhang w/misters "Unlimited Misters" & A/C blowers **UPGRADE**



- Large Custom Bluewater teak fighting chair w/offset & cushion & cover **UPGRADE**
- Recirculating live well on transom **UPGRADE**
- Second 5 cubic foot freezer **UPGRADE**
- Sea Vision underwater lights **UPGRADE**
- Teak rocket launcher w/8 rod holders **UPGRADE**
- Drop down wing station **UPGRADE**
- Black Sunbrella mezzanine cushions **UPGRADE**
- 8 Custom teak Bluewater Chairs **UPGRADE**
- Aft cockpit Sun Shade that turns into a Bimini **UPGRADE**
- Audio system control, multi-function keypad & speakers **UPGRADE**
- Custom 8 person Bluewater 92x36 teak tri-fold table w/storage bag **UPGRADE**
- AM/FM Stereo w/CD **UPGRADE**
- Custom Black carpeting **UPGRADE**
- Custom Black covering for coaming boards **UPGRADE**
- All Teak custom boarding step box **UPGRADE**
- Life up coaming gate **UPGRADE**
- A/C blower for cockpit overhang **UPGRADE**
- Molded fiberglass 192 sf
- Mezzanine seating w/cushions
- Sliding door to Salon
- Scuppers
- Polished aluminum ladder to Bridge
- Fiberglass sole
- Transom door
- Seat hinged for access to engine compartment

## Salon

Entering into the salon the experience is breathtaking. Custom Peruvian walnut wood floors, Biltmore leather cherry sofa, custom inlay salon table, and high gloss African Mahogany raised panelling throughout will make you feel you are on a fishing yacht or at a country club. Every detail accounted for in the floors & lighting to the custom decor.

- African Mahogany High Gloss raised panel cabinetry **UPGRADE**
- Removable upholstered headliner
- Fluted wood valances
- Timberline 2" wood blinds to match African Mahogany wood **UPGRADE**
- Fixed frameless windows with tinted safety glass
- Whirlpool icemaker
- Telephone
- AC dimmable lights
- Entertainment Center with 42" Sole plasma TV
- Denon DVD/CD changer and receiver
- SAT receiver
- Carbon monoxide detector
- Smoke detector
- A/C disbursed through wooden valances
- Bottle and glass storage
- Electric panels
- Sliding door to cockpit
- Polished stainless threshold at salon door
- Custom Peruvian Walnut wood flooring - **UPGRADE**
- CUSTOM Biltmore cherry leather U-shaped sofa with rod and arm storage - **UPGRADE**
- 4 each 20X20 Biltmore cherry leather throw pillows - **UPGRADE**
- 3 each 20X20 custom fabric throw pillows for matching club chair - **UPGRADE**
- Custom club chair - **UPGRADE**
- Custom cocktail table by A.J. originals with storage - **UPGRADE**
- U-Line 75BWC-00 wine cooler - **UPGRADE**
- All outlets covers and switch plates in black - **UPGRADE**

## Galley

The galley is one of the finest with raised high gloss African Mahogany storage cabinets, full array of upgraded appliances and very convenient free standing wine cooler. Plenty of storage with every convenience in mind. Luxurious granite countertops and imported Peruvian walnut wood flooring makes this a stunning galley to prepare meals or entertaining.

- African Mahogany raised panel cabinetry - **UPGRADE**
- A/C dispersed through fluted valances, port and starboard
- Removable upholstered headliner
- Fluted wood valances
- Storage in port attic for 8 person cockpit table **UPGRADE**
- Storage drawers in upper cabinet raised panel African Mahogany - **UPGRADE**
- Granite Black Galaxy countertops with double bullnose edge - **UPGRADE**

- Fixed frameless windows with dark tinted safety glass
- Sharp microwave/convection oven concealed by cabinet door
- Whirlpool Trash Compactor **UPGRADE**
- KitchenAid four burner ceramic cooktop stove
- In-Sink-Erator garbage disposal
- Under counter Sub Zero fridge and Sub Zero freezers 4 refrigerators and 2 freezers total **UPGRADE**
- Stainless Steel sink
- AC and DC light fixtures
- AC dimmable lights
- Telephone outlet
- Peruvian Walnut wood flooring - **UPGRADE**
- Soap dispenser - **UPGRADE**
- Additional lighting under cabinets - **UPGRADE**
- All light switches and switch plate covers in black - **UPGRADE**
- All outlet covers in black - **UPGRADE**
- U-Line 75BWC Standing wine cooler - **UPGRADE**
- 2 inch timberline wood blinds to match African Mahogany cabinetry **UPGRADE**
- KitchenAid insta-hot - **UPGRADE**
- Central vacuum outlet

## Dinette

The dinette, starboard to the galley, is very unique. Granite table top, custom Biltmore cherry leather seating, and raised panelled African Mahogany cabinetry with a Peruvian walnut wood floor. The dinette can also double as a work space with its 32 inch LCD TV doubling as a computer monitor with wireless mouse and keyboard.

- Raised African Mahogany panelling - **UPGRADE**
- Black Galaxy Granite dinette table - with double bullnose edge **UPGRADE**
- Custom dinette cherry leather seating - **UPGRADE**
- Custom throw pillows **UPGRADE**
- Timberline 2 inch wood blinds to match interior African Mahogany wood - **UPGRADE**
- Fish tank screen saver - **UPGRADE**
- 32 inch Sharp LCD TV on dinette bulkhead and can also be used as a computer monitor- **UPGRADE**
- Wireless mouse and keyboard with computer - **UPGRADE**
- Computer has 40 GB hard drive with CD Rom - **UPGRADE**
- Computer also has weather works - **UPGRADE**

## Lower Companionway

- Removable upholstered headliner
- Wallcovering
- DC light fixtures
- Whirlpool washer and dryer
- Access to port and starboard storage with DC light
- All switch plates and outlet covers in black - **UPGRADE**
- Access hatches to bilges
- Peruvian Walnut wood stairs and lower flooring running forward and aft - **UPGRADE**
- 24 volt dimmable lighting on stairs at each tread - **UPGRADE**
- Raised panel African Mahogany high gloss doorways - **UPGRADE**

## Master Stateroom

The owners spared no expense when it comes to their master suite. The carpet has been imported from Spain and custom laid to make sure every detail is perfect in the design. The bedside ivory sconces are imported from Africa and displayed on black velvet wallcoverings. Every detail from the high gloss African Mahogany raised panel cabinetry to the custom bedding is picture perfect.

- Full beam stateroom
- Custom bedding and pillows **UPGRADE**
- Removable upholstered headliner
- Wallcovering

- Upholstered berth base
- Walk-in cedar lined hanging locker with door and automatic light
- Nightstands port and starboard with drawers
- Dressers port and starboard with drawers
- AC dimmable lights
- Sharp 20 inch LCD flat screen TV
- Large portlights port and starboard
- Private access to head with door stop
- Pioneer AM/FM audio access with Pioneer CD/DVD player
- A one touch master universal remote with RF control - **UPGRADE**
- Additional set of sheets - **UPGRADE**
- 1 each standard size neck roll **UPGRADE**
- 2 each 20X20 accent pillows - **UPGRADE**
- Carbon monoxide detector
- Polk audio system
- Telephone outlet
- Full length mirror
- Raised panel African Mahogany cabinetry - **UPGRADE**
- Imported and custom layered carpeting from Spain - **UPGRADE**
- HMC king mattress with pad - **UPGRADE**
- Custom imported Ivory Ram Horn sconces from Africa - **UPGRADE**
- Custom velvet wallcovering port and starboard above each night stand - **UPGRADE**
- All switch plates and outlet covers in black - **UPGRADE**
- Crothed Mahogany with black inlay perimeter molding custom A.J. Originals headboard - **UPGRADE**
- Roman shades over portholes- **UPGRADE**

## Master Head

- Linen storage
- Towel bars
- Headhunter freshwater toilet
- 120V AC air freshener blower
- All switch plates and covers in black - **UPGRADE**
- Plexi-mirror around upper cabinet
- DC low voltage lights under toe kicks
- Plexi mirror ceiling - **UPGRADE**
- Holding tank 3/4 full indicator light
- Custom wallcovering - **UPGRADE**
- Countertops done in brown waves granite with double bullnose edge- **UPGRADE**
- Raised panel African Mahogany cabinets and doors- **UPGRADE**
- Flooring in Black Galaxy granite - **UPGRADE**

## Port Guest Stateroom - Crew/Guests

This stateroom is equipped with twin berths that can be used as crews quarters or guest quarters. Upgraded SAT TV receiver, raised panel African Mahogany storage cabinets and private access to the day head.

- Removable upholstered headliner
- Wallcovering
- Upholstered headboard and storage under berths
- Upholstered berth bases
- Upper and lower HMC mattresses
- Custom bedding and pillows
- Dresser with drawers
- Audio system control, LCD keypad and speakers
- Full length mirror
- Additional set of sheets for each berth **UPGRADE**
- Private access to head with door stop
- AC & DC light fixtures
- AC dimmable lights
- Switch plates and outlet covers in black - **UPGRADE**
- Upper storage cabinet in raised panel African Mahogany - **UPGRADE**
- Entrance doors in raised panel African Mahogany - **UPGRADE**
- Telephone outlet - **UPGRADE**
- Pioneer AM/FM Stereo w/DVD player - **UPGRADE**
- 20 inch Sharp LCD TV - **UPGRADE**
- SAT TV receiver **UPGRADE**

- Carbon Monoxide detector

## Port Guest Head

---

- Stall shower with door, seat and automatic enclosed sump pump
- Towel bar
- Headhunter freshwater toilet
- 120V AC air freshener blower
- AC & DC light fixtures
- Plexi glass around upper cabinet
- DC low voltage lights under toe kicks
- Linen storage
- Holding tank 3/4 full indicator light
- Switch plates and outlet covers in black - **UPGRADE**
- Raised panel African Mahogany entrance doors and cabinetry - **UPGRADE**
- Black Galaxy granite flooring - **UPGRADE**
- Brown Waves granite countertop with double bullnose edge - **UPGRADE**
- Plexi glass ceiling - **UPGRADE**
- Custom wallcoverings - **UPGRADE**

## Starboard Guest Stateroom

---

Starboard stateroom like the port has twin berths. This arrangement the berths can be slid together to make one queen size bed. Lots of storage and same attention to detail that is found throughout the vessel.

- Twin berths which slide together to make a queen - **UPGRADE**
- Removable upholstered headliner
- Wallcovering
- Upholstered berth bases
- Custom bedding and pillows
- Cedar lined hanging locker with door and automatic light
- AC dispersed through fluted wood soffits
- Full length mirror
- Blanket locker - outboard
- Carbon Monoxide detector
- AC & DC light fixtures
- AC dimmable lights
- 20 inch Sharp LCD TV
- Pioneer AM/FM DVD/CD player and one touch master universal remote
- Pioneer CD changer
- SAT TV Receiver **UPGRADE**
- All switch plates and outlet covers in black - **UPGRADE**
- Raised panel African Mahogany cabinets - **UPGRADE**
- Raised panel African Mahogany door to head and companionway - **UPGRADE**
- Imported and custom layed carpeting from Spain - **UPGRADE**
- HMC single berth mattresses - **UPGRADE**
- Additional set of sheets for each berth - **UPGRADE**

## Starboard Head

---

- Upper storage cabinets with mirror
- Stall shower with door, seat and automatic enclosed sump pump
- Towel bar
- Headhunter freshwater toilet
- 120V AC air fresheners
- AC & DC ight fixtures
- DC low voltage lights under toe kicks
- Holding tank 3/4 full indicator light
- Black galaxy granite flooring - **UPGRADE**
- Brown Waves granite countertops with double bullnose edge - **UPGRADE**
- Plexi mirrored ceiling - **UPGRADE**
- Raised panel African Mahogany - cabinets and entrance doors - **UPGRADE**
- All switch plates and outlet covers done in black - **UPGRADE**

- Custom wallpaper - **UPGRADE**

## VIP Stateroom

---

The VIP stateroom is located forward in the bow. High gloss raised panel African Mahogany cabinets and the custom laid carpet imported from Spain makes this guest stateroom fit for a king. Your guests have a private head, upgraded HMC queen mattress and plenty of storage.

- Removable upholstered headliner
- Padded panels on hullside
- Upholstered berth base
- Built in dresser port and starboard
- Carbon monoxide detector
- Cedar-lined hanging lockers with automatic light
- Overhead storage lockers port and starboard
- Screened overhead hatch with privacy cover
- Night stands port and starboard
- AC & DC lighting
- AC dimmable lights
- Full length mirror
- 20 inch Sharp LCD TV
- Pioneer AM/FM CD/DVD player - **UPGRADE**
- Pioneer DVD/CD changer **UPGRADE**
- SAT TV receiver - **UPGRADE**
- Raised panel African Mahogany cabinetry - **UPGRADE**
- HMC queen mattress - **UPGRADE**
- All outlet covers and switch plates in black - **UPGRADE**
- Telephone outlet - **UPGRADE**
- Imported and custom layed carpet from Spain - **UPGRADE**
- Additional set of sheets - **UPGRADE**

## VIP Head

---

- Custom wallcovering
- Plexi-mirror around upper cabinet
- Towel bars
- 120V AC air freshener blower
- AC & DC light fixtures
- DC low voltage lights under toe kicks
- Headhunter freshwater toilet
- Stall shower with door, seat automatic enclosed sump pump
- Holding tank indicator 3/4 full light
- Screened overhead hatch with privacy door
- Black Galaxy granite flooring - **UPGRADE**
- Brown Waves granite countertops w/ double bullnose edge **UPGRADE**
- Raised panel African Mahogany entrance doors and cabinets - **UPGRADE**
- Plexi glass mirror on ceiling - **UPGRADE**

## Flybridge

---

The flybridge is designed with the sport of fishing in mind. Upgrades to electronics, air conditioning for comfort, all with the same elegance and attention to detail as below. This flybridge was equipped for the captain in mind to take you to where the sport of catching those big Marlin lay!

- Molded fiberglass
- Top loading insulated chill box starboard
- Straight lounge to starboard, U-shaped lounge forward around to port with removable polyfoam cushions and
- A/C on flybridge - **UPGRADE**
- Bluewater teak helm chairs with cushions & covers - **UPGRADE**
- Center ladder to tuna tower - **UPGRADE**
- Bluewater custom teak table with single stainless

storage underneath

- Rod storage in port , starboard and aft lounges
- Central control station with all switches
- Engine synchronization control
- Compass with dimmable light
- Neutral interlock switches allowing engine to start
- Polished anodized welded aluminum rails and stanchions
- Powder coated grab rails
- Hydraulic power assisted steering
- Aft facing seat, aft of chill box and starboard lounge
- Power acuated electronics console
- 2 RUPP Outriggers **UPGRADE**
- Top loading 8 cubic feet deep freezer forward outboard port side of the console
- Emergency back up controls
- Freshwater washdown - **UPGRADE**
- Black custom Sumbrella cover for helm and teak pod area - **UPGRADE**

steel pedestal - **UPGRADE**

- Teak helm pod console with stainless steel wheel and single lever clutch and throttle controls **UPGRADE**
- SEA TEL SAT TV on electronics screen - **UPGRADE**
- Clarion AM/FM CD Player - **UPGRADE**
- Hydraulic 25 hp bow thruster -**UPGRADE**
- Spotlight installed in hardtop - **UPGRADE**
- Electric teaser reels with sliding door in hardtop - **UPGRADE**
- EZ2YC front and sides 7 piece enclosure - **UPGRADE**
- Murphy power view engine back up displays - **UPGRADE**
- Additional 6 rod holders across back of bridge (total of 12) - **UPGRADE**
- Custom hand rail on hardtop (L-shaped)
- Black custom Sumbrella covers for each helm chair - **UPGRADE**

## Tower

The tower is easily accesible with the center ladder from the flybridge. The view from the tower along with the full spectrum of upgraded electronics will enable the captain to locate that sweet spot to raise fish! At night this yacht is spectacular with the underwater lights and the tower lit up in blue lighting!

- Freshwater washdown in tower **UPGRADE**
- Center ladder **UPGRADE**
- 6100i Northstar **UPGRADE**
- Trim tab switches **UPGRADE**
- 2 each blue lights in hard top **UPGRADE**
- 2 each blue lights under tower standing platform **UPGRADE**
- Tower control box 60 inches to fit all electronics **UPGRADE**
- 7" FURUNO Nav Net **UPGRADE**
- Bow thruster controls **UPGRADE**
- Murphy power view - engines displays -**UPGRADE**
- Bench seat - **UPGRADE**
- Compass - **UPGRADE**

## Electronics and Navigational Equipment

- Northstar 972 GPS system **UPGRADE**
- Northstar 15 inch color display **UPGRADE**
- Northstar 6100i color GPS chart plotter **UPGRADE**
- Nobeltec charts for Florida east coast and keys, Florida west coast, Bahamas and Bermuda, Norfolk VA to Jacksonville **UPGRADE**
- Chart cards for Bahamas, Florida Mid-Atlantic and Delaware - **UPGRADE**
- 2 each ICOM 602 VHF/hailer **UPGRADE**
- TRACPHONE 252 SAT Phone **UPGRADE**
- Panasonic KXTA824 phone system **UPGRADE**
- KVH SAT Phone trackphone **UPGRADE**
- Furuno Navnet VX2 Radar/chart plotter 1954 CBB/NT **UPGRADE**
- Furuno 6 ft open array antenna 25KW, 120 NM **UPGRADE**
- Furuno CA50/200 R199 Transducer **UPGRADE**
- Furuno 15 inch SXGA bright display **UPGRADE**
- Furuno GP1920 CBB Navionics **UPGRADE**
- Furuno video sounder **UPGRADE**
- SeaTel 1898S SAT TV system **UPGRADE**
- GEOSAT Mobile wi-fi HP router and access system **UPGRADE**

- Splashcam & intelcam cameras - 2 each that record to a DVR  
**UPGRADE**
- SIMRAD IS15 Multi display -**UPGRADE**
- Furuno multi station GD1720 C fishfinder - **UPGRADE**
- Murphy power view engine displays - tower and bridge **UPGRADE**
- EPIRB GPIRB NATW/GPS - **UPGRADE**
- 2 each hydrostatic release life rafts **UPGRADE**
- Larger compass (like on 80MY Hatteras) **UPGRADE**

## TOWER NAVIGATION

- Trim tab switches
- Murphy power view - Engine displays **UPGRADE**
- Bow thruster controls **UPGRADE**
- Murphy power view - engine displays **UPGRADE**
- 6100i Northstar color GPS/chart plotter **UPGRADE**
- ICOM HM-157 VHF - **UPGRADE**
- Furuno multistation GD1720C fishfinder **UPGRADE**
- Furuno 7 inch Nav Net display **UPGRADE**
- SIMRAD IS15 Mult display **UPGRADE**
- Tower control box 60 inch to fit all electronics **UPGRADE**

## Electrical System

- Twin Onan 27.5 kw generators with 1350 hours on each
- Gel/lead battery charger
- Automatic battery paralleling system with switch at control console
- Air Conditioning with reverse cycle heating and A/C compressors
- DC distribution panel with magnetic circuit breakers
- DC electronics panel with magnetic circuit breakers
- AC distribution panel with magnetic circuit breakers
- AC switching panels with voltage source selector switches, volt meter, ammeter, frequency meters, twin generators start/stop controls, interlock selector breakers and voltage boost switches
- Battery control panels with fuses and isolation switches
- Two 24 volt 50 amp Glendinning shore power cords
- AC & DC light fixtures
- AC dimmable lights
- AC duplex outlets with ground protection
- Computer controlled ethernet monitoring system with LCD touch screen display
- Ground fault protection on AC receptacles and lighting circuits
- Navigation lights
- Telephone/CATV inlets
- Telephone and CATV shoreline cord one each
- Omni directional TV antenna
- Ventilation fans in attic space

## Engine /Mechanical Equipment

- Twin CAT C-32A 1800 hp each - Hours/Port 1575- Starboard 1575 **UPGRADE**
- CAT Platinum Advantage Warranty, expires March 31, 2016 OR 2230 hours **UPGRADE**
- Twin Onan 27.5 kw generators **UPGRADE**
- FCI Watermaker 1200 GPD
- Water manifold with centralized shut-off valve for sinks and showers
- AC fluorescent lights
- Polyethylene water lines
- FM200 fixed fire extinguishing system for engine compartment with auto and manual controls
- Pressurized 230 V AC freshwater pump with central charcoal freshwater filter and back flush capabilities
- 230V 40 gallon electric water heater
- Freshwater fill hose for engines and generator

- DC lights
- DC exhaust blower
- Variable speed air induction system for engine combustion air with two 16" vaneaxial fans ducted to cockpit and controlled by pressure and temp
- 24V DC bilge and sump pumps
- Two auxiliary emergency bilge pumps
- AC compressed air system with air line and regulator
- Seawater pressure system with AC pump
- AC compressors and pumps
- Welded and polished stainless steel grab rails
- Sea water pick up sea chests
- 1 inch stainless steel steering tie bar with pivoting self aligning ball joint connection
- Bow thruster - hydraulic 25hp **UPGRADE**
- Fiberglass holding and water tanks
- Monitoring consoles for main engines include all necessary gauges, start and stop switches
- Electric fuel priming pumps
- Electric fuel transfer system with two pumps
- Transducer well glycol filled
- Sealed shower sumps
- Soft water filtration for water tank
- Pultruded fiberglass rudder shelf
- Insulation in deck
- Water delivery kit - **UPGRADE**
- Freshwater AC back up pump - **UPGRADE**
- AC backup seawater pump - **UPGRADE**
- ACR RCL100 Spotlight - **UPGRADE**
- Engine room camera - **UPGRADE**

## Hull and Exterior

- Solid fiberglass hull
- 2 polished stainless steel stern cleats and hawse pipes
- 4 polished stainless steel springline cleats with chafing stripes
- Maganese bronze struts
- Nibral high performance **8 blade** propellers 49 X 81.5 inch
- Central vacuum system
- Bow deck access to rope storage locker
- Dripless shaft seals with spare seals
- Wireless remote control for cablemaster
- Zincs on rudders
- 2 Givens life rafts w/hydrostatic release installed on hardtop **UPGRADE**
- Dual air horn
- Life ring
- Life jackets
- Black fenders (4)
- Prop removal and installation tool
- Freshwater washdown on fore deck **UPGRADE**
- Black boot top **UPGRADE**
- Maxwell windlass 2500 - 300' 3/8 chain **UPGRADE**
- Black bottom paint
- Custom bow rail - **UPGRADE**
- Handles at port and starboard brow for easy access around sides - **UPGRADE**

## Exclusions

- All personal effects
- All personal gear

## Exclusions

Owner's personal belongings.

## Disclaimer

The Company offers the details of this vessel or yacht in good faith but cannot guarantee or warrant the accuracy of this information nor warrant the condition of the vessel. A buyer should instruct his representatives, agents, or his surveyors, to investigate such details as the buyer desires validated. This vessel or yacht is offered subject to prior sale, price change, or



withdrawal without notice.

# PHOTOS

**Blume N Good Profile**



**Fighting Chair**



**Cockpit**



**Rocket Launcher**



**Salon Aft**



**Salon U-Shaped Couch**



**Salon Forward**



**Galley**



**Galley**



**Galley/Dinette**



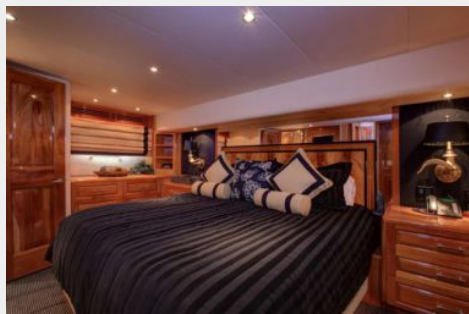
**Dinette TV**



**Companionway Wood Floors/Stairs**



**Master Stateroom**



**Master Stateroom (2)**



**Master Stateroom Entrance**



**Master Stateroom to Port**





**Master Head**



**Master Head/ Shower**



**Port Stateroom**



**Day Head**



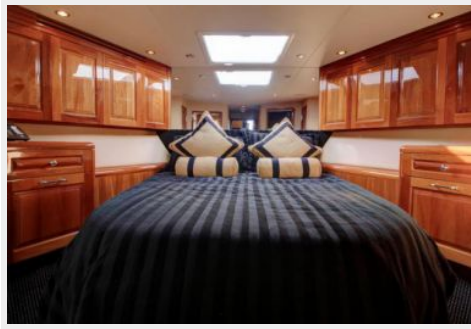
**Strb. Guestroom - Twin Singles**



**Starboard Head**



**Forward VIP Stateroom**



**Forward VIP Stateroom (2)**



**VIP Fwd Strm Head**



**VIP Fwd Strm Head/Shower**



**Washer/Dryer**



**Flybridge Helm**



**Teak Helm Pod**



**Twin Helm Chairs**



**Flybridge Table**



**Flybridge Seating**



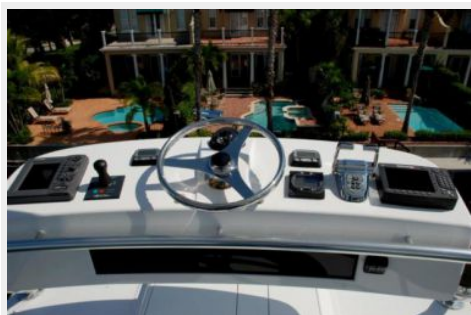
**Flybridge - Strb Side**



**Center Ladder**



**Tower Console**



**Radar/Twin Life Rafts**





**Tower Console**



**Tower Seating**



**Bow**



**Aft Shade/Center Ladder**



**Aft Shade**



**Engine Room**



**Engine Room**



**Engine Room**



**Engine Room**



**Starboard Engine**



**Engine Room**



**Port Engine**



**Engine Room**



**Engine Room**



**Transom Name**



**Bow view**





**Profile - Strb Side**



## CONTACTS

---

Andrey Shestakov, leading yacht broker of the sales department of Shestakov Yacht Sales Inc. Shestakov Yacht Sales Inc., the official representative of the Miami/Fort Lauderdale FL headquarters.

### Contact details

---

Email:  
[andrey@shestakovyachtsales.com](mailto:andrey@shestakovyachtsales.com)

Web: [shestakovyachtsales.com/en/](http://shestakovyachtsales.com/en/)

### Telephones

---

USA: +1(954)274-4435

### Office hours

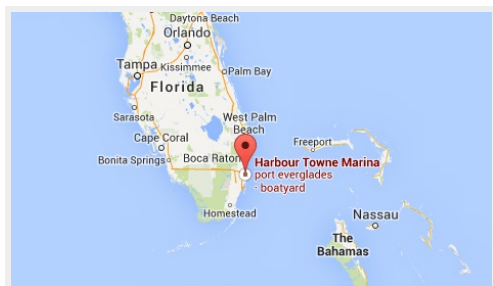
---

Monday – Saturday: **9:00 - 21:00** EDT

Sunday: **closed**

### Address

---



Harbour Towne Marina, 850 NE 3rd St,  
STE 213, Dania, FL 33004