

MANDARINE VI — HAKVOORT



Builder: HAKVOORT

Year Built: 2001

Model: Schooner

Price: PRICE ON APPLICATION

Location: Netherlands

LOA: 92' 0" (28.04m)

Beam: 18' 9" (5.70m)

Min Draft: 7' 7" (2.30m)

Max Draft: 14' 2" (4.30m)

Cruise Speed: 8 Kts. (9 MPH)

Max Speed: 10 Kts. (12 MPH)

Our experienced yacht broker, Andrey Shestakov, will help you choose and buy a yacht that best suits your needs **Mandarine VI — HAKVOORT** from our catalogue. Presently, at Shestakov Yacht Sales Inc., we have a wide variety of yachts available on our sale's list. We also work in close contact with all the big yacht manufacturers from all over the world.

If you would like to buy a yacht **Mandarine VI — HAKVOORT** or would like help answering any questions concerning purchasing, selling or chartering a yacht, please call **+1(954)274-4435**

TABLE OF CONTENTS

TABLE OF CONTENTS	2
SPECIFICATIONS	4
Overview	4
Basic Information	4
Dimensions	4
Speed, Capacities and Weight	4
Accommodations	4
Hull and Deck Information	5
Engine Information	5
DETAILED INFORMATION	6
Accommodations	6
Deck Equipment	6
Electronics and Navigational Equipment	6
Engine /Mechanical Equipment	6
Remarks	7
Sails and Rigging	7
Exclusions	7
Disclaimer	7
PHOTOS	8
Saloon	8
Saloon	8
Saloon	8
Galley	8
Guest room	9
Master bedroom	9
General plan	10
Sail plan	10
CONTACTS	11

Contact details	11
Telephones	11
Office hours	11
Address	11

SPECIFICATIONS

Overview

Mandarine VI, a classic Wishbone schooner, design by Olivier van der Meer and built by the wellknown Hakvoort yard in Holland. Nice three cabin layout with extra double berth in deckhouse, sleeps a total of 9, crew cabin with separate entrance. Captain-maintained and in pristine condition. Completely refitted in 2007 including a full paintjob by the Hakvoort yard.

Basic Information

Category: Schooner

Model Year: 2001

Year Built: 2001

Refit Year: 2007

Country: Netherlands

Dimensions

LOA: 92' 0" (28.04m)

LWL: 80' 0" (24.38m)

Beam: 18' 9" (5.70m)

Min Draft: 7' 7" (2.30m)

Max Draft: 14' 2" (4.30m)

Speed, Capacities and Weight

Cruise Speed: 8 Kts. (9 MPH)

Max Speed: 10 Kts. (12 MPH)

Displacement: 196.21141318 Pounds

Water Capacity: 1162.3570288 Gallons

Fuel Capacity: 1056.688208 Gallons

Accommodations

Total Cabins: 4

Total Berths: 9

Hull and Deck Information

Hull Material: Steel

Hull Color: White

Hull Designer: Olivier van der Meer

Engine Information

Engines: 1

Manufacturer: Vetus-Deutz

Model: DT67

Fuel Type: Diesel

DETAILED INFORMATION

Accommodations

Classic teak interior with massive teak floors, a spacious saloon with an open galley, nice seating area in the deckhouse. headroom approx. 2.05 m., Mastercabin with ensuite bathroom, and two guest cabins with one double berth and one with two singles and a pullman. Both with ensuite bathroom with shower and toilet. Up in the deckhouse an extra open double berth which makes a total of 9 berths. Separate entrance for the crew cabin in the front of the yacht. Fully airconditioned by Marine air systems and heated by a Kabola heating system. Galley is equipped with a Siemens electric 4 burner stove with integrated oven, Siemens Microwave, 2x Waeco fridge, 2x Engel freezer, extra fridge in deckhouse. Extractor, Miele softcare Combi wash and dryer (2007).

Deck Equipment

Herreshoff designed clinker built centreboard sailing dinghy 11'. RIB Zodiac Pro 420 dinghy with Yamaha 40 hp outboard, RIB Zodiac 310 dinghy with 10 hp outboard, 2 x horseshoe lifebuoys with lights, 2 x P&S Jonbuoy man overboard system, 2 x 8 persons ML lifeguard liferaft, 2 x stainless steel windlass, Anchors: 2 x 150 kg galvanised anchors with 110 m x 13 mm galvanised chain. 70 lb CQR with 30 m x 13 mm chain + 80 m warp. folding cockpit table, steel davits, sprayhood, Cockpit cover, Bimini cover, complete wintercover, Swimpladder, aluminium gangway, sparparts.

Electronics and Navigational Equipment

AP Navigator MK 10 GPS. Robertson AP20 autopilot. Furuno Marine FR 7112 W radar with ARPA radar plotting aid. Furuno NX 500 Navtex receiver. Thrane & Thrane Inmarsat Mini MPanasonic phone exchange with Siemens handsets in each cabin. Sailor A1 VHF DSC radio telephone in cockpit. Sailor RT4822 VHF Sailor H1622D Satcom C with Oki printer. Brookes & Gatehouse echo sounder and Hydra 2000 wind instruments. 2x MFD and 5x analogue repeater at helm position. 2x 20/20 repeaters at main mast. MFD in wheelhouse, MFD in crew cabin. Whitlock Polaris racing compass RR Electronics DSC-Pacific antenna system.

Engine /Mechanical Equipment

Vetus Deutz DT 67 diesel engine. ZF Hurth HSW 630 A1 gearbox. Engine hours approx. 2450 (nov 2008), Morse engine controls. 4 blade fixed propeller. Cruising speed approx. 8 knots, maximum speed approx. 10 knots, Onan MDKAF 28.6 KW 380V 3 phase generator, generator hours 7000 (nov 2008). Mastervolt battery chargers: 3x 100 A for service; 1x 25 A for emergency.

2 x Mastervolt 2500 W inverters. Cramm twin propeller hydraulic bowthruster driven from the engine. HEM 20/1200 380 V 3 phase watermaker. Thorn Minerva fire control system. Smoke sensors in all compartments. Flame detector in engine room.

Remarks

Mandarine VI was built as a family yacht to enjoy. With her low draft she can visit any port you like. A full paintjob was part of a complete refit in 2007 by the Hakvoort yard in Monnickendam (worklist available).

Sails and Rigging

Two aluminium Nirvan alloy masts with a Wishbone schooner rig: varnished pine tapered bowsprit. The mainsail is a simple and efficient Bermudian sail, fully battened with Fredericksen luff cars running on the mast track. Standing rigging in s.s. wire. Main staysail boom, set on vertical post. Fredericksen car for clew outhaul. 2 x Hallspars carbon spinnaker poles mounted on foreside of fore mast. Reckmann manual furling stays for genoa, fore staysail, main staysail, in-mast furling for Fisherman staysail.

Sails of 2001 by North Sails an in prestine condition. Furling yankee. Furling fore staysail. Furling fisherman. Furling boomed main staysail. Fully battened mainsail, extra a large Halfwinder and a light Genoa, Andersen electric winches and associated footblocks.

Exclusions

Owner's personal belongings.

Disclaimer

The Company offers the details of this vessel or yacht in good faith but cannot guarantee or warrant the accuracy of this information nor warrant the condition of the vessel. A buyer should instruct his representatives, agents, or his surveyors, to investigate such details as the buyer desires validated. This vessel or yacht is offered subject to prior sale, price change, or withdrawal without notice.

PHOTOS

Saloon



Saloon



Saloon



Galley



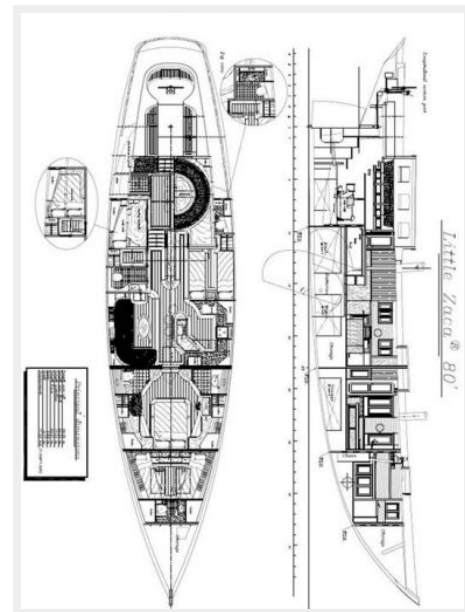


Guest room

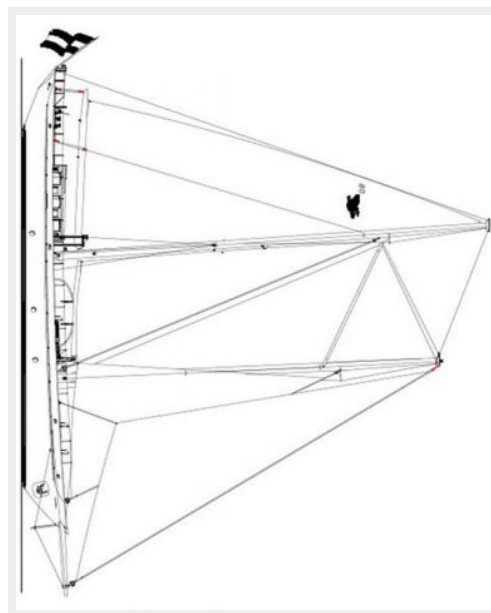
Master bedroom



General plan



Sail plan



CONTACTS

Andrey Shestakov, leading yacht broker of the sales department of Shestakov Yacht Sales Inc. Shestakov Yacht Sales Inc., the official representative of the Miami/Fort Lauderdale FL headquarters.

Contact details

Email: andrey@shestakovyachtsales.com

Web: shestakovyachtsales.com/en/

Telephones

USA: +1(954)274-4435

Office hours

Monday – Saturday: **9:00 - 21:00** EDT

Sunday: **closed**

Address



Harbour Towne Marina, 850 NE 3rd St,
STE 213, Dania, FL 33004