

SALT SHAKER — JIM SMITH



Builder: JIM SMITH

Year Built: 2000

Model: Sport Fisherman

Price: PRICE ON APPLICATION

Location: United States

LOA: 65' 0" (19.81m)

Beam: 18' 0" (5.49m)

Min Draft: 5' 3" (1.60m)

Cruise Speed: 37 Kts. (43 MPH)

Max Speed: 45 Kts. (52 MPH)

Our experienced yacht broker, Andrey Shestakov, will help you choose and buy a yacht that best suits your needs **Salt Shaker — JIM SMITH** from our catalogue. Presently, at Shestakov Yacht Sales Inc., we have a wide variety of yachts available on our sale's list. We also work in close contact with all the big yacht manufacturers from all over the world.

If you would like to buy a yacht **Salt Shaker — JIM SMITH** or would like help answering any questions concerning purchasing, selling or chartering a yacht, please call **+1(954)274-4435**

TABLE OF CONTENTS

TABLE OF CONTENTS	2
SPECIFICATIONS	4
Overview	4
Basic Information	4
Dimensions	4
Speed, Capacities and Weight	4
Accommodations	5
Hull and Deck Information	5
Engine Information	5
DETAILED INFORMATION	6
Accommodations	6
Salon	6
Galley	7
Master Stateroom - Forward	7
Master Head	7
VIP Stateroom	8
Guest Stateroom	8
Starboard & Port Head	8
Flybridge	8
Tower	9
Electronics and Navigational Equipment	9
Cockpit	9
Engine Room	10
Mechanical Equipment	11
Bow	11
Features	11
Remarks	12
Exclusions	12

Disclaimer	12
PHOTOS	13
Salon	13
Salon	13
Salon	13
Galley	13
Master Stateroom	13
Master Stateroom	13
Master Head	14
VIP Stateroom	14
Guest Stateroom	14
Port & Starboard Head	14
Flybridge	15
Flybridge	15
Cockpit	15
Cockpit	15
CONTACTS	18
Contact details	18
Telephones	18
Office hours	18
Address	18

SPECIFICATIONS

Overview

body {font-family: helvetica, arial;font-size: 12pt;} body {font-family: helvetica, arial;font-size: 12pt;}

Basic Information

Category: Sport Fisherman

Sub Category: Sport Fisherman

Model Year: 2000

Year Built: 2000

Country: United States

Fly Bridge: Yes

Cockpit: Yes

Dimensions

LOA: 65' 0" (19.81m)

Beam: 18' 0" (5.49m)

Min Draft: 5' 3" (1.60m)

Speed, Capacities and Weight

Cruise Speed: 37 Kts. (43 MPH)

Cruise Speed RPM: 1900 Kts.

Max Speed: 45 Kts. (52 MPH)

Displacement: 80000 Pounds

Water Capacity: 300 Gallons

Fuel Capacity: 2000 Gallons

Accommodations

Total Cabins: 3

Total Heads: 3

Crew Berths: 1

Crew Sleeps: 1

Crew Heads: 1

Hull and Deck Information

Hull Material: Cold Molded

Engine Information

Engines: 2

Manufacturer: MTU

Model: 16V2000

Engine Type: Inboard

Fuel Type: Diesel

DETAILED INFORMATION

Accommodations

Salt Shaker is best described as a sleek, high performance, custom sport fish. Built in 2000 and the first of the "New" hull design by Jim Smith Custom Yachts, it was and still is one of the fastest sport fishing yachts on the water. Her interior contains 3 staterooms, 3 heads, a very large well laid out salon and galley. Built with close attention to detail, the interior colors and fabrics throughout this vessel will instantly impress anyone who walks in the door. She is in excellent shape and has been professionally maintained by her captain and crew. If you are in the market for a turnkey, tournament rigged, custom sport fish, look no further.

Salon

To enter the salon you simply step on a button outside the door and the pneumatic air assist door opens. Upon entering the salon you find a beautiful L-shaped sofa to the port side with a chest coffee table with storage. The cushions of the couch are hinged with storage underneath. To starboard is a barrel chair and built in cabinets. Starting aft, the cabinets contain a radio station with both VHF and a single sideband radio. Forward in the next set of doors are shelves for storage and then the TV cabinet which is angled towards the L-shaped sofa. The salon and galley are separated by a granite topped countertop with two leather topped bar stools.

- Weather Fax Furuno MK 500
- Sea 156 VHF
- Ratan Ice Machine
- Sony 25" TV
- Sony VCR, Sony DVD, Sony 50 Disk Changer
- Sony Receiver
- DSS Receiver
- Plate Storage Below Starboard Forward Locker
- Dinette Table w/ Granite Top and Settee
- (2) Bar Stools w/ Chair
- Main Electrical Panel Under Galley Island
- Pneumatic Air Assisted Salon Door System w/ Compressor
- Dimmers on Overhead Halogen Lights
- Upgraded Sony Stereo System
- Custom Shelves for Keys, etc. in Starboard Bulkhead at Salon Entrance
- Custom Liquor and Wine Cabinet
- Ash/Cherry Custom Flooring
- Cherry Veneer Throughout

Galley

Forward of the salon is the very spacious galley. The galley comes equipped with large under counter custom stainless steel refrigerator and freezer, 2-burner cook top, GE Micro/Convection oven and a stainless steel sink. The cabinetry in the galley is a rich Cherry wood satin finish and the cabinets house locking pull out drawers with ample storage. To starboard is a matching granite topped dinette that will fit four people very comfortably.

- GE Microwave / Convection Oven
- Garbage Disposal
- 110V Pressure Fresh Water System Icemaker
- Under Counter Refrigerator / Freezer; Swing Type
- (2) Burner Stove
- ER Access
- Custom Stainless Steel Refrigerator
- Granite Counter Tops on Island
- Corian Tops in Galley
- Cherry Veneer Throughout
- Drawers Aft Portside
- Cabinets and Drawer Storage Forward

Master Stateroom - Forward

The Master stateroom is forward in the bow and is finished in a beautiful cherry wood. It has a queen sized berth which comes out from the starboard side and is equipped with an actuator lift that raises and lowers the berth for storage. The master head is all the way forward with ash and cherry floors and has a large shower with bench seating. Other features of this large roomy master stateroom are cedar lined hanging closets, a vanity with mirror and stool, 21" Sony TV, custom wallpaper, mirrored headboard, a small safe and its own independent climate control. All the comforts of any 5-Star resort.

- Sony 21" TV
- Queen Bunk on Actuator Lift
- Mattress Upgrade
- Ample Storage
- Cedar Lined Hanging Locker
- Vanity w/ Mirror and Stool
- Custom Wallpaper
- Mirrored Headboard
- Cherry Veneer Throughout
- Custom Carpet w/ Wrapped Hatches
- Chest of Drawers Forward and Aft
- Additional Phone Jack and 110V Outlet at Master Night Table
- Small Safe Located Under Master Bunk
- End Table Lamps Have Been Hardwired

Master Head

- Headhunter Toilet
- Corian Vanity Countertop
- Mirrored Ceiling w/ Overhead Hall Lights
- Mirrored Vanity
- Florescent Lights
- Ash and Cherry Floors

VIP Stateroom

The VIP stateroom is to the port side of the companionway and is also finished in a gorgeous cherry wood. The VIP features a queen berth against the hull side with a single bunk above. This configuration works well for both a guys fishing trip or a weekend with another couple. Next to the berths and aft is a large closet which houses the stackable washer/dryer. Other features include a cedar lined hanging closet, storage under the lower berth and its owner independent climate control. Forward is the VIP head featuring ash and cherry floors, a large shower and all the amenities.

- Built-in Washer and Dryer
- Lower Queen Bunk w/ Mirrored Headboards
- Storage Under Queen, Lift-up Bunk
- Upper Twin Bunk
- Custom Wallpaper
- Cherry Veneer Throughout
- Overhead Stereo Speakers
- Reading Lights at Bunks
- Sony 13" TV
- Hanging Locker

Guest Stateroom

The guest stateroom is to starboard of the companionway and has the same cherry wood finish. This stateroom has two oversized over under bunks and a cedar lined hanging closet with drawers and its own climate control. The head is aft of the stateroom with ash and cherry floors and can also be used as the day head. It also has a large shower and all the amenities.

Starboard & Port Head

- Corian Vanity Sink Countertop
- Mirrored Vanity
- Headhunter Heads
- Ash & Cherry Floors
- Cherry Veneer Throughout
- Custom Wallpaper

Flybridge

The flybridge is enormous and extremely well laid out. The helm is like that of an F15 fighter jet.

Everything is visible and within reach without having to step away from the wheel. Polished single lever controls and custom steering wheel finish off the helm with a sleek look. Overhead is a teaser reel mount again located so that you never have to leave the wheel while teasing a fish to the boat. The starboard bench seat has enough room to store most peoples complete rod collection. Aft is an observers seat with backrest for those long days of watching the baits and a refrigerated drink box underneath. Forward of the helm is a deep L-shaped bench seat with even more storage. There is even more storage which can be accessed from the bridge that is up in the forward brow.

- (2) Murray Brothers Helm Chairs
- Under Seat Refrigerated Drink Box
- 3-Sided EZ2CY Enclosure
- Teaser Reel Mount
- Storage Under Bench Seats
- Overhead Lighting
- Helm Pod w/ Single Lever Controls
- Aired Nautical Engine Gauge Package
- DDEC Engine Control Monitors

Tower

- Custom Hopewell Tuna Tower w/ ECM for each Engine
- DDEC Engine Monitors
- 44' Rupp Outriggers & Center Rigger
- SEA 156 VHF
- Remote Data Marine Depth Sounder
- (3) Spreader Lights 110V

Electronics and Navigational Equipment

- Data Marine Digital Depth Sounder
- 961XD Northstar Chart Plotter GPS
- 96 mi Furuno 15" Clear Monitor Non-Interface Display Radar
- Chart NAV Display Monitor
- SEA 2250 Single Side Band
- Robertson AP22 Autopilot
- SEA 156 VHF
- RCL 100 Spotlight
- Eclipse Stereo w/ CD
- Backup Controls for DDEC Controls

Cockpit

The "Salt Shaker" is the ultimate fishing machine. She comes with an all teak cockpit and covering boards and is equipped with a huge in-deck fish box which can be accessed from either side. Outboard of the fish box on each side are 2 enormous in-deck live bait wells. Aft is an access hatch to the lazarette area. A full sized Murray Brothers fighting chair with rocket launcher

and bait tray highlight the cockpit. Other cockpit features include: Bait prep station, custom tackle center with 4 drawers, custom stainless steel top loading freezer, refrigerated drink box under the step, storage for cleaning supplies, fuel gauges, switches for bait wells, macerator pump, fuel transfer pumps and salt and fresh water washdowns. The cockpit also has a 50 amp power connector on each side. This feature allows you to run the boat on either side with a single 50 amp cord or run the boat with (2) 50 amp cords. The transom has a large transom door for pulling in those tournament winning Marlin.

- Freezer at Tackle Center
- Bait Prep Station
- Tackle Center w/ (4) Drawers to Port
- ER Access
- Stow CAB to Starboard w/ Pump Switches, Live Bait, Fuel, Fish Box and Gauge
- Refrigerated Drink Box at Salon Step
- Ladder to Bridge
- Teak Deck
- Teak Cover Boards and Combing
- Overhead Lights
- Indirect Gunnel Lighting
- Fresh and Saltwater Washdown
- Eskimo Ice Machine, Pumped to in Deck; Insulated Fishbox
- Transom Tuna Door w/ Custom Swim Ladder
- Additional Upgraded AC Pump
- Imron Lazarette
- Jim Smith Fabricated Sump Pump w/ Macerator
- Murray Tuna Chair w/ Back Rest and Rocket Launchers w/ Bait Tray
- Dual Thermostat on Cockpit Freezer for Refrigerator and Freezer Capabilities
- Wing Haunches Have (3) Rod Holders Each side
- Extended Tackle Drawers Under Cockpit Sink

Engine Room

The engine room of a Jim Smith Tournament Sporfish could arguably be the finest in the market today. They are all faired, finished and painted with Imron. The "Salt Shaker's" engine room features 1800 horsepower 16 2000 Series MTU's. These engines have had all the updates available and are running beautifully. All compressors and refrigeration are mounted on top of the mid-fuel tank which is located at the forward bulkhead of the engine room. Aft of the engines are (2) 25kW Northern Lights Generators. Upon entering the engine room from the cockpit, to port is the 1200 GPD SEA Recovery unit with access to all filters for easy servicing. Both the aft fuel tank and the mid fuel tank are equipped with site fuel gauges so there is no guessing as to how much fuel is on board. Even with all this equipment, the manner in which Jim Smith laid out the engine room gives it plenty of room both inboard and outboard of the engines for easy access.

- Engine Room Gauges Mounted Forward
- 1200 GPD Sea Recovery with MKR
- ER Blowers
- Headhunter Fresh Water Pump
- Additional Backup AC Pump w/ Fittings

- (2) Northern Light Gen Sets
- Water Separator for both Generators
- Central Drainage System Reducing the Number of Thru-Hulls
- Generator and Engine Prime Systems
- Additional (Auxiliary) 24 Volt Fresh Water Backup Pump
- Imron Bilges Throughout
- Dryout Pump in Forward Bilge and Engine Room
- Eskimo Ice Maker
- 330 Gallon Mid Fuel Tank
- DDEC Displays
- AC Compressors
- AC & DC Breaker Panels
- Battery Parallel
- Finish is Faired and Finished Throughout
- Fuel Transfer System Aft and Forward with Inline Filters
- Fuel Tank Site Gauges on Aft and Mid Tanks

Mechanical Equipment

- 24,000btu Reverse Cycle A/C Units
- Halon Fire Control System
- In-Line Mufflers
- Exhaust Pyrometer Pressure Gauge
- Fuel Prime Pumps

Bow

- Muir Self-Feeding Anchor w/ Windlass for Chain and Rope with Remote
- (3) Bomar Deck Hatches
- Custom Made, Removable Stainless Steel Pulpit

Features

- (2) Macerator Pumps on both Bait Wells
- Dual Steer Rams
- In-Deck Fish Box w/ Macerator
- Dual Trim Tab Motors
- Headhunter Water System
- Custom Wrapped Valances, Soffits and Wire Box Chases
- Brass Fixtures
- Mirrored Ceilings in all Heads
- High Polish Corian Countertop in Galley
- Cherry-Faced Vanity Cabinets in all Heads
- Granite Dinette Table
- "Treasure Chest" Cocktail Table w/ Storage

Remarks

If you are looking for a fast, economical and tremendous ocean going sport fish then the "Salt Shaker" is the boat your looking for. She boasts a cruising speed of 37 knots at 1950 rpm's burning 120 gph. At that speed her range is over 600 nautical miles. Not only is the "Salt Shaker" an awesome performing boat, she also fishes very nice. The fish are definitely not scared of this boat. She will impress even the most avid fishermen in every way.

Exclusions

Owner's personal belongings.

Disclaimer

The Company offers the details of this vessel or yacht in good faith but cannot guarantee or warrant the accuracy of this information nor warrant the condition of the vessel. A buyer should instruct his representatives, agents, or his surveyors, to investigate such details as the buyer desires validated. This vessel or yacht is offered subject to prior sale, price change, or withdrawal without notice.

PHOTOS

Salon



Salon



Salon



Galley



Master Stateroom



Master Stateroom



Master Head



VIP Stateroom



Guest Stateroom



Port & Starboard Head



Flybridge



Flybridge



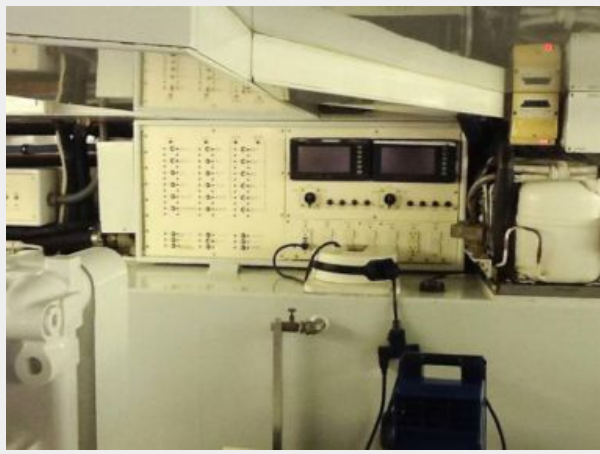
Cockpit



Cockpit







CONTACTS

Andrey Shestakov, leading yacht broker of the sales department of Shestakov Yacht Sales Inc. Shestakov Yacht Sales Inc., the official representative of the Miami/Fort Lauderdale FL headquarters.

Contact details

Email: andrey@shestakovyachtsales.com

Web: shestakovyachtsales.com/en/

Telephones

USA: +1(954)274-4435

Office hours

Monday – Saturday: **9:00 - 21:00** EDT

Sunday: **closed**

Address



Harbour Towne Marina, 850 NE 3rd St,
STE 213, Dania, FL 33004