

BELLISSIMA — HATTERAS



Builder: HATTERAS

Year Built: 1987

Model: Motor Yacht

Price: PRICE ON APPLICATION

Location: United States

LOA: 53' 0" (16.15m)

Beam: 15' 10" (4.83m)

Min Draft: 4' 0" (1.22m)

Cruise Speed: 16 Kts. (18 MPH)

Max Speed: 18 Kts. (21 MPH)

Our experienced yacht broker, Andrey Shestakov, will help you choose and buy a yacht that best suits your needs **Bellissima — HATTERAS** from our catalogue. Presently, at Shestakov Yacht Sales Inc., we have a wide variety of yachts available on our sale's list. We also work in close contact with all the big yacht manufacturers from all over the world.

If you would like to buy a yacht **Bellissima — HATTERAS** or would like help answering any questions concerning purchasing, selling or chartering a yacht, please call **+1(954)274-4435**

TABLE OF CONTENTS

TABLE OF CONTENTS	2
SPECIFICATIONS	4
Basic Information	4
Dimensions	4
Speed, Capacities and Weight	4
Accommodations	4
Hull and Deck Information	4
Engine Information	5
DETAILED INFORMATION	6
Accommodations	6
Aft deck	6
Deck Equipment	6
Electrical System	6
Engine /Mechanical Equipment	7
Exclusions	7
Flybridge	7
Galley and Laundry	8
Master Stateroom Aft	8
Pilothouse	8
Exclusions	8
Disclaimer	9
PHOTOS	10
Flybridge Helm	11
Forward Flybridge Helm Seating	11
Helm	11
Electronics	11
Tender and Aft Seating	11
Galley	11

Meile Washer and Dryer	12
Dinette	12
Aft	12
Master Stateroom Starboard	12
Master Stateroom Closet	12
Master Entertainment	13
Pilothouse Helm Seat	13
Salon Port	13
Salon Starboard	13
CONTACTS	14
Contact details	14
Telephones	14
Office hours	14
Address	14

SPECIFICATIONS

Basic Information

Category: Motor Yacht

Model Year: 1987

Year Built: 1987

Country: United States

Fly Bridge: Yes

Dimensions

LOA: 53' 0" (16.15m)

Beam: 15' 10" (4.83m)

Min Draft: 4' 0" (1.22m)

Speed, Capacities and Weight

Cruise Speed: 16 Kts. (18 MPH)

Max Speed: 18 Kts. (21 MPH)

Displacement: 55000 Pounds

Water Capacity: 310 Gallons

Holding Tank: 165 Gallons

Fuel Capacity: 700 Gallons

Accommodations

Total Cabins: 3

Total Heads: 3

Hull and Deck Information

Hull Material: Fiberglass

Hull Configuration: Semi-Displacement

Hull Color: Imron White

Hull Designer: Hargrave

Engine Information

Engines: 2

Manufacturer: Detroit Diesel

Model: 6V92TA

Engine Type: Inboard

Fuel Type: Diesel

DETAILED INFORMATION

Accommodations

Bellissima is a one-of-a-kind Hatteras. Her condition is the BEST I've ever seen in 50+ years in the marine industry. Twin 465 hp. Detroit 6V92TA diesels with 400 hours SMOH, stabilizers, low-profile davit, hard bottom inflatable, TOTAL custom hi-gloss cherry finish, teak and holly deck, so much more!

Entering the Main Salon from Aft Deck the salon features an L-shaped sofa in light green with storage. The fabrics are very neutral, there is a custom high-gloss teak hi-low table, a port side custom hi-gloss cherry cabinet with a 42" flat screen TV which lifts electronically. There are two barrel chairs, custom cherry valances, and a white dinette. Forward is a custom helm seat in hi-gloss with leather upholstered seats. The entertainment center features a home theater controlled receiver for surround sound, 5-disc CD player, DVD, and DirecTV. There are NEW headliners and lighting with custom valance. The cabinetry is hi-gloss cherry with granite countertops!

Aft deck

- Three-sided Sumbrella enclosure - black
- Port and Starboard wing doors
- Bar cabinet in high-gloss cherry with granite top, sink and U-line ice machine/refrigerator
- Teak and stainless ladder to Bridge
- (2) Wicker settee's and a table
- Extended swim platform

Deck Equipment

The bottom is blister free!

- Marquipt 1000 lb. low profile davit
- Novurania 11' hard bottom inflatable with Honda 15 hp. outboard
- Galley Maid 32 volt windlass
- 5/16" chain and 1" braid (both 300 feet)
- Guardian G-87 anchor

Electrical System

- Onan 20 kw. generator
- La Marche 30 amp/32 volt battery charger
- DC 12/32 volt
- AC 120/220 volt
- (8) 8-volt batteries
- 32 Volt to 12 volt inverter
- Main battery switches

Engine /Mechanical Equipment

Engines have been totally overhauled with approximately 400 hrs. SMOH. The engine room is in NEW condition!

- Niad stabilizers
- Pressure water system (100/32 volt)
- Hynautic steering
- Dual Racor 1000 fuel filters
- (4) NEW A/C units
- Galleymaid electric heads
- Full manual instruments in engine room
- Fuel priming system
- NEW A/C cooling pump
- Oil change system
- Special oil filtration system
- Dripless shaft seals
- All seacoks are operational
- Engine room have been completely re-painted
- Hoses and clamps
- Walker air seps

Exclusions

Owner's personal items.

Flybridge

The Flybride has a full custom console with two helmseats, a black Sunbrella bimini top, and a full enclosure.

- FLYBRIDGE ELECTRONICS
- Icom VHF
- Interphase forward sonar
- Icom hailer

- Robertson AP300X autopilot
- Raymarine E-120 radar
- Furuno NavNet GPS/plotter

Galley and Laundry

Located forward is a NEW Bosch stacked washer/dryer. The Galley has had a COMPLETE UPDATE including custom cabinets, and granite countertops, NEW appliances including a 4-burner cooktop, Miele dishwasher, GE refrigerator, and a teak and holly sole. The dinette includes a granite topped table with newly upholstered seats and backs.

Master Stateroom Aft

The Master Stateroom AFT features a full-width centerline queen with underbed storage, a full length cedar-lined closet forward, night stands and drawers, a flat-screen TV, stereo, CD, DVD, and DirecTV. The Master Ensuite bath includes a head, sink, and stall shower.

- Forward Guest VIP Stateroom
- Upper/Lower bunks
- Large hanging locker
- Ample storage
- Ensuite bath with stall shower, sink and head
- Guest Stateroom AFT
- Twin beds separated by a nightstand
- Full-length closet
- Ample storage with drawers
- Flat screen TV
- Across companionway is a full head with stall shower.

Pilothouse

- Icom VHF
- Interphase forward sonar
- Furuno fishfinder NavNet
- Robertson AP300X autopilot
- Furuno NavNet GPS/plotter
- World phone
- Weather fax and phone
- Raymarine wind gauge
- ACR searchlight

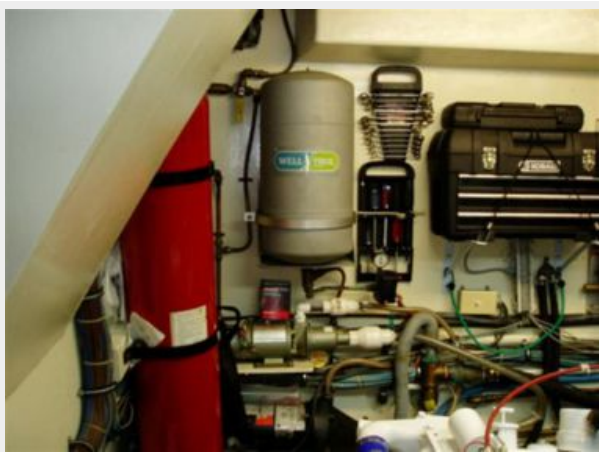
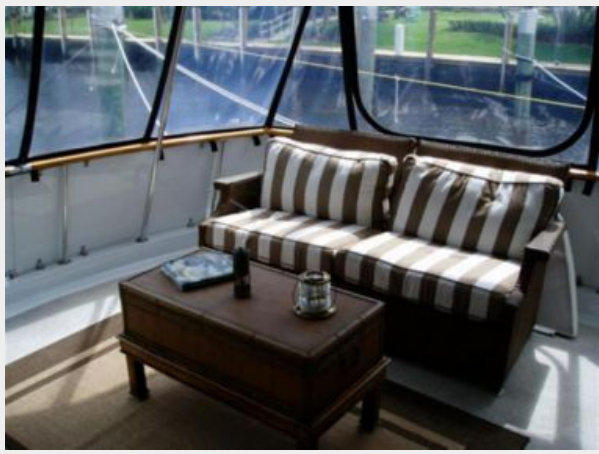
Exclusions

Owner's personal belongings.

Disclaimer

The Company offers the details of this vessel or yacht in good faith but cannot guarantee or warrant the accuracy of this information nor warrant the condition of the vessel. A buyer should instruct his representatives, agents, or his surveyors, to investigate such details as the buyer desires validated. This vessel or yacht is offered subject to prior sale, price change, or withdrawal without notice.

PHOTOS



Flybridge Helm



Forward Flybridge Helm Seating



Helm



Electronics



Tender and Aft Seating



Galley



Dinette



Meile Washer and Dryer



Aft



Master Stateroom Starboard



Master Stateroom Closet



Master Entertainment



Pilothouse Helm Seat



Salon Port



Salon Starboard



CONTACTS

Andrey Shestakov, leading yacht broker of the sales department of Shestakov Yacht Sales Inc. Shestakov Yacht Sales Inc., the official representative of the Miami/Fort Lauderdale FL headquarters.

Contact details

Email: andrey@shestakovyachtsales.com

Web: shestakovyachtsales.com/en/

Telephones

USA: +1(954)274-4435

Office hours

Monday – Saturday: **9:00 - 21:00** EDT

Sunday: **closed**

Address



Harbour Towne Marina, 850 NE 3rd St,
STE 213, Dania, FL 33004