

ZAMINDAR — CALIFORNIAN



Builder: CALIFORNIAN

Year Built: 1990

Model: Motor Yacht

Price: PRICE ON APPLICATION

Location: United States

LOA: 48' 0" (14.63m)

Beam: 15' 3" (4.62m)

Min Draft: 4' 9" (1.42m)

Cruise Speed: 16 Kts. (18 MPH)

Max Speed: 20 Kts. (23 MPH)

Our experienced yacht broker, Andrey Shestakov, will help you choose and buy a yacht that best suits your needs Zamindar — CALIFORNIAN from our catalogue. Presently, at Shestakov Yacht Sales Inc., we have a wide variety of yachts available on our sale's list. We also work in close contact with all the big yacht manufacturers from all over the world.

If you would like to buy a yacht Zamindar — CALIFORNIAN or would like help answering any questions concerning purchasing, selling or chartering a yacht, please call +1(954)274-4435

TABLE OF CONTENTS

TABLE OF CONTENTS	2
SPECIFICATIONS	4
Basic Information	4
Dimensions	4
Speed, Capacities and Weight	4
Hull and Deck Information	4
Engine Information	4
DETAILED INFORMATION	5
DETAILED WALKTHROUGH	5
ACCOMMODATIONS	5
GALLEY / DINETTE	5
MASTER STATEROOM AND HEAD	6
GUEST STATEROOM AND HEAD	6
FLYBRIDGE ELECTRONICS / NAVIGATION	6
SUNDECK	7
COCKPIT / DECK	7
ENGINE DETAILS AND MECHANICAL EQUIPMENT	7
EXCLUSIONS	8
BROKERS REMARKS	8
Exclusions	8
Disclaimer	8
PHOTOS	10
Salon to Port	10
Salon to Starboard	10
Galley to Port	10
Dinette to Starboard	10
Flybridge Helm	11
Flybridge Seating	11

Wet Bar and Entertainment	11
Aft Deck Seating	11
Aft Deck Wet Bar	11
Engine Room	12
CONTACTS	13
Contact details	13
Telephones	13
Office hours	13
Address	13

SPECIFICATIONS

Basic Information

Category: Motor Yacht

Model Year: 1990

Year Built: 1990

Country: United States

Cockpit: Yes

Dimensions

LOA: 48' 0" (14.63m)

Beam: 15' 3" (4.62m)

Min Draft: 4' 9" (1.42m)

Speed, Capacities and Weight

Cruise Speed: 16 Kts. (18 MPH)

Max Speed: 20 Kts. (23 MPH)

Displacement: 41000 Pounds

Water Capacity: 190 Gallons

Fuel Capacity: 500 Gallons

Hull and Deck Information

Hull Material: Fiberglass

Engine Information

Engines: 2

Manufacturer: Caterpillar

Model: 3208TA

Engine Type: Inboard

Fuel Type: Diesel

DETAILED INFORMATION

DETAILED WALKTHROUGH

You can enter this fine vessel from either the port or starboard side. You can also enter her from the cockpit. From the cockpit you can enter into the Master Stateroom or up a few stairs to the sundeck.

As you enter the salon from the sundeck you have a large L-Shaped couch on the starboard side. Across from the couch on the port you have the entertainment center.

Forward and down a few stairs you have the galley on the port and the dinette on the starboard.

Forward of the galley and dinette you have the guest stateroom with an island bed and her own guest head with separate shower.

Aft of the salon down a few steps you have the utility closet with separate washer and dryer.

Aft of the closet you have the master Stateroom. The Master Stateroom has an Island bed with private master head and separate shower.

ACCOMMODATIONS

The salon has had new carpet installed and the L-Shaped couch has been newly upholstered, Color TV, DVD/VCR, Home Stereo System, CD, AM/FM & Marine Air. The owner's stateroom & head is aft with a large Island Bed, Air/Heat. (3) Hanging Closets, built in Color TV and lots of storage. A separate master head & separate shower. Just before you enter the Master Stateroom you have a utility closet with a separate Washer and Dryer. The Guest Stateroom & Guest Head is forward.

GALLEY / DINETTE

- Electric Counter top Stove
- Crank up/Down Dinette Table

- Built in Convection/Microwave Oven
- Built in Coffee Maker
- Large Refrigerator/Freezer
- Storage
- Newly upholstered U-Shaped Dinette
- (2) Stainless Sinks

MASTER STATEROOM AND HEAD

- Large Island Bed
- Air/Heat
- (3) Hanging Closets
- Lots of Storage
- Color TV (built-in)
- Separate Shower

GUEST STATEROOM AND HEAD

- Island Bed
- Air/Heat
- Closet
- Storage
- Separate Shower

FLYBRIDGE ELECTRONICS / NAVIGATION

The bridge is completely enclosed and in excellent shape

- Maxwell Windlass Remote
- Rudder Indicator
- Glendinning Engine Synch
- Garmin 178C Sounder/GPS
- Raytheon RZI Radar
- Speaker Controls
- VHF Radio Uniden Solaria
- Speed, Depth, Temp Dart
- Spotlight Control
- Compass Azimuth Electric
- Pioneer Stereo/CD on Flybridge

SUNDECK

The Sundeck has had custom work done on her. The Large wet bar has beautiful wood trim, 2 large Wicker chairs w/Ottomans. Both the starboard and portside have solid wing doors.

- Solid Wing Doors
- Cockpit Access
- Bridge Access
- Salon Access
- Enclosure w/U-Zips & Screens
- Custom Wet Bar (Wood accented)
- U-Line Refrigerator/Icemaker
- Cabinet Storage
- Sink
- TV

COCKPIT / DECK

She has one of the rare white hulls.

- Swim Platform w/Ladder
- Transom Door
- Cockpit Coaming Pads
- Hot & Cold Freshwater Shower
- Maxwell Windlass (Bow Foot Controls) NEW 06
- Large Electric Spotlight
- Fender Racks/ Fenders
- Chain Rode
- Plow Anchor
- Dock side Pressured Water
- Freshwater wash down

ENGINE DETAILS AND MECHANICAL EQUIPMENT

The engine room and equipment has been well maintained.

- Sea Water Strainers
- Racor Filters
- 110/12-volt system
- Onan 12.5 kW generator w/Sound Shield 1500 hours

EXCLUSIONS

Personal Possessions.

BROKERS REMARKS

You can enter this fine vessel from either the port or starboard side. You can also enter her from the cockpit. From the cockpit you can enter into the Master Stateroom or up a few stairs to the sundeck.

As you enter the salon from the sundeck you have a large L-Shaped couch on the starboard side. Across from the couch on the port you have the entertainment center. Forward and down a few stairs you have the galley on the port and the dinette on the starboard. Forward of the galley and dinette you have the guest stateroom with an island bed and her own guest head with separate shower. Aft of the salon down a few steps you have the utility closet with separate washer and dryer. Aft of the closet you have the master Stateroom. The Master Stateroom has an Island bed with private master head and separate shower.

This vessel was fresh water kept until 2006!

A one of a kind MUST SEE!

Exclusions

Owner's personal belongings.

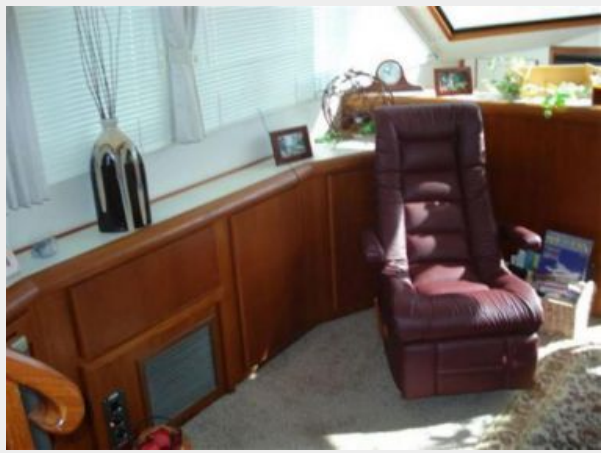
Disclaimer

The Company offers the details of this vessel or yacht in good faith but cannot guarantee or warrant the accuracy of this information nor warrant the condition of the vessel. A buyer should instruct his representatives, agents, or his surveyors, to investigate such details as the buyer

desires validated. This vessel or yacht is offered subject to prior sale, price change, or withdrawal without notice.

PHOTOS

Salon to Port



Salon to Starboard



Galley to Port



Dinette to Starboard



Flybridge Helm



Flybridge Seating



Wet Bar and Entertainment



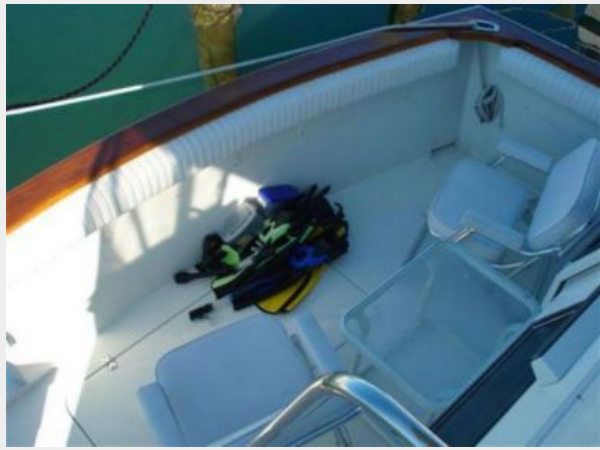
Aft Deck Seating



Aft Deck Wet Bar



Engine Room



CONTACTS

Andrey Shestakov, leading yacht broker of the sales department of Shestakov Yacht Sales Inc. Shestakov Yacht Sales Inc., the official representative of the Miami/Fort Lauderdale FL headquarters.

Contact details

Email: andrey@shestakovyachtsales.com

Web: shestakovyachtsales.com/en/

Telephones

USA: +1(954)274-4435

Office hours

Monday – Saturday: **9:00 - 21:00** EDT

Sunday: **closed**

Address



Harbour Towne Marina, 850 NE 3rd St,
STE 213, Dania, FL 33004