

## MED ADVENTURE — FARMONT YACHTS



**Builder:** [Farmont Yachts](#)

**Year Built:** 2004

**Model:** Cruiser

**Price:** PRICE ON APPLICATION

**Location:** Netherlands

**LOA:** 70' 0" (21.34m)

**Beam:** 20' 5" (6.20m)

**Min Draft:** 5' 5" (1.65m)

**Cruise Speed:** 11 Kts. (13 MPH)

Our experienced yacht broker, Andrey Shestakov, will help you choose and buy a yacht that best suits your needs **Med Adventure — Farmont Yachts** from our catalogue. Presently, at Shestakov Yacht Sales Inc., we have a wide variety of yachts available on our sale's list. We also work in close contact with all the big yacht manufacturers from all over the world.

If you would like to buy a yacht **Med Adventure — Farmont Yachts** or would like help answering any questions concerning purchasing, selling or chartering a yacht, please call **+1(954)274-4435**

# TABLE OF CONTENTS

---

TABLE OF CONTENTS	2
SPECIFICATIONS	4
Overview	4
Basic Information	4
Dimensions	4
Speed, Capacities and Weight	4
Accommodations	4
Hull and Deck Information	5
Engine Information	5
DETAILED INFORMATION	6
Accommodations	6
Electronics and Navigational Equipment	6
Engine /Mechanical Equipment	6
Remarks	7
Exclusions	7
Disclaimer	7
PHOTOS	8
saloon	8
saloon	9
Master	9
Guest bathroom	9
Guest bedroom	9
Master bathroom	10
Lower aft deck	10
Lower aft deck	10
Upper aft deck	11
CONTACTS	13
Contact details	13

---

Telephones	13
Office hours	13
Address	13

---

# SPECIFICATIONS

---

## Overview

---

The "Med Adventure" is a unique yacht, designed by René van der Velden, built to the highest standards. Taking the input of the experienced yacht owner and his yacht manager together with the workmanship of builder Farmont, a premium yacht has been delivered. The superior workmanship shows immediately in both the interior and the exterior. As well on the technical side she is fully equipped.

## Basic Information

---

**Category:** Cruiser

**Sub Category:** Long Range Cruiser

**Model Year:** 2004

**Year Built:** 2004

**Country:** Netherlands

## Dimensions

---

**LOA:** 70' 0" (21.34m)

**LWL:** 67' 0" (20.40m)

**Beam:** 20' 5" (6.20m)

**Min Draft:** 5' 5" (1.65m)

## Speed, Capacities and Weight

---

**Cruise Speed:** 11 Kts. (13 MPH)

**Displacement:** 180000 Pounds

**Water Capacity:** 1003.8537976 Gallons

**Holding Tank:** 528.344104 Gallons

**Fuel Capacity:** 5283.44104 Gallons

## Accommodations

---

**Total Cabins:** 3

**Total Berths:** 6

---

## Hull and Deck Information

---

**Hull Material:** Composite

**Deck Material:** Teak

**Hull Color:** White

**Hull Designer:** René van der Velden

**Interior Designer:** René van der Velden

---

## Engine Information

---

**Engines:** 2

**Manufacturer:** Caterpillar

**Model:** 3406C

**Fuel Type:** Diesel

---

# DETAILED INFORMATION

---

## Accommodations

---

Living and main saloon on deck level with electrically hidden flatscreen television, two steps down to open galley with dinette for 5 persons. Galley fully equipped with 4 stove oven, microwave/grill/convection oven, icemaker, trash compactor, dish washer, 2 refrigerators and 2 freezers. Stainless steel sinks in marble countertops. Walkway up from the living to the spacious pilothouse/skylounge with freestanding chart table and drawers, chartbox and locker/book stowage outboard, computer area, pilot bunk and upholstered L-shaped settee, raised high enough for visibility out of the windows. Windows electrically heated with CLD heating appliques. Two steps up to the mid aft deck. Stairs down from the pilothouse to central hallway which leads to the owner's cabin and guest cabin. Owner's cabin in nice cherry woodwork and beige velvet with ensuite bathroom with marble toppings and nice shower cabin. Guest cabin with ensuite bathroom, finished in beige marble. Both cabins with double bed. From lower side deck entrance down to central hall which leads to engine room, aft storage space as well as the crew/guest area. Crew/guest area with two single bunks and ensuite bathroom, all finished in cherry wood. From wheel house portuguese walkway to front deck where you will find a proper crane that can be used to reload the tender and sailing dinghy. From mid aft deck stairs up to top (sun)deck.

## Electronics and Navigational Equipment

---

2 x radar (Simrad RA53 and Simrad RA52). 2 x Chart plotter Simrad CS55. Simrad AP50 autopilot, second autopilot Simrad HS50. Small chart plotter Simrad CP33. 2 x VHF Simrad RS87 radio and antenna. KVH Inmarsat Satcom Fleet 55 Tracphone, Iridium satellite telephone. Ritchie Compass, Friedrich Barograph. Simrad Depthsounder. Double steering positions in pilothouse.

Besenzoni extending and rotating telescoping passerelle mounted in transom for stern-to docking, stand alone system. Naiad hydraulic stabilizers. Deck crane Telescopic Tenderlift capacity 1500 lbs, Avon Seajet 400 tender, sailing dinghy. Watermaker HEM 4.500 l/p day, Torkmaster hydraulic anchor windlass, two bow anchors of 160 kg each, high holding power type. Each 2 x 110 m x 16 mm diameter hi-tensile chain. Reversible chilled water air-conditioning, Kabola warm water central heating (besides the airco system). Active KVH G5 Satellite TV receiver.

## Engine /Mechanical Equipment

---

---

- Two main engines Caterpillar 3406C - C rated, 355 kw/480PS @2300 rpm, to this set two Python drive units are added to reduce the vibration. -Torkmaster bowthruster 25 hp; Torkmaster Sternthruster 20hp. -Two Torkmaster generators 32 Kw. - Hydraulic system power pack electrical with 2 additional pto's installed on engines, 18,6 kw units. - Engine room freely aired. - Electrical system shore power system, stern cable caddy, inverters Mastervolt with a total of 15000 watt, frequency converter, gel service batteries 1200AH. On board 12/24/220/380 V electrical system with converter. Yacht is constantly upgraded as example all bulbs have been replaced into led systems winter 2007/2008. All technical systems on board are in a double or triple setup so that you can travel all around the world and even then the yacht will be delivered with many spare parts, as extra props and shafts, etc.

## Remarks

---

The "Med Adventure" is a unique yacht, designed by René van der Velden, built according to the highest standards as it was the first of these yachts to be built.

This smallpocket explorer vessel has all equipment necessary to go around the world. This yacht was built for an experienced owner, the full attention of the yacht manager during the build, as well as the effort of the shipyard make her a fully upgraded long range motor yacht.

## Exclusions

---

Owner's personal belongings.

## Disclaimer

---

The Company offers the details of this vessel or yacht in good faith but cannot guarantee or warrant the accuracy of this information nor warrant the condition of the vessel. A buyer should instruct his representatives, agents, or his surveyors, to investigate such details as the buyer desires validated. This vessel or yacht is offered subject to prior sale, price change, or withdrawal without notice.

# PHOTOS

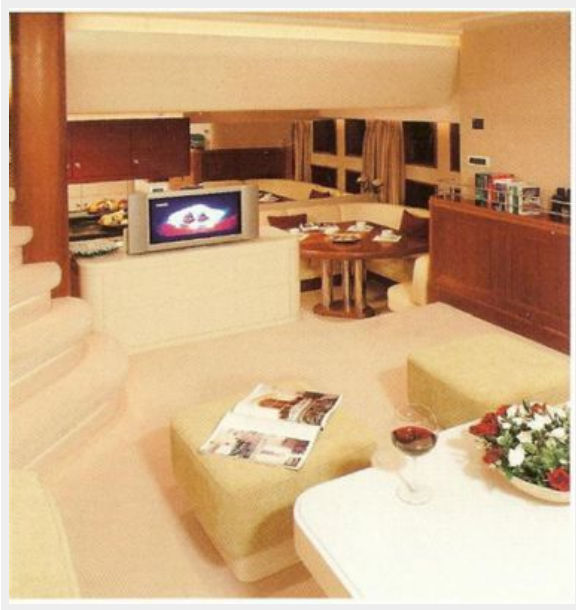


saloon





**saloon**



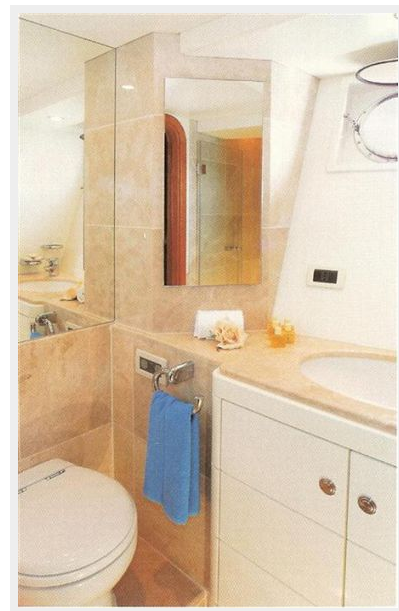
**Master**



**Guest bedroom**



**Guest bathroom**



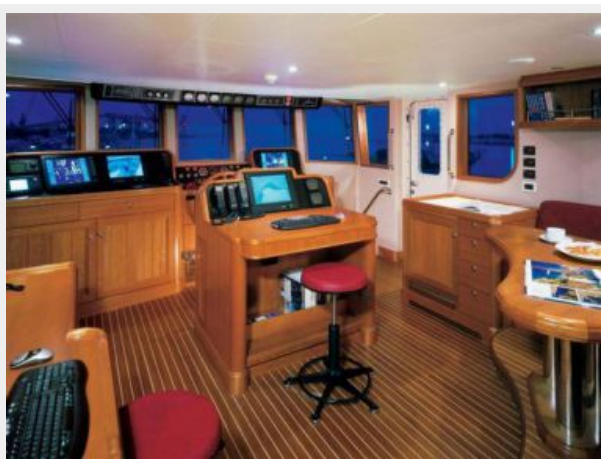
**Lower aft deck**



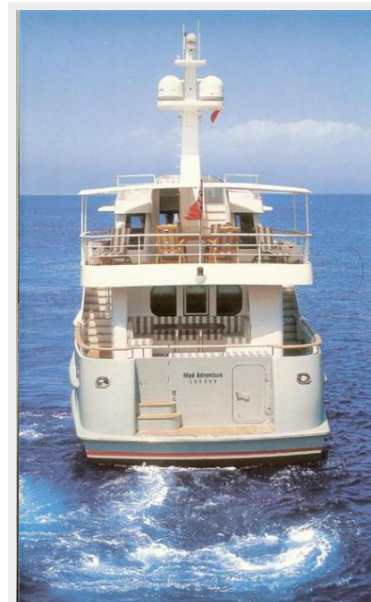
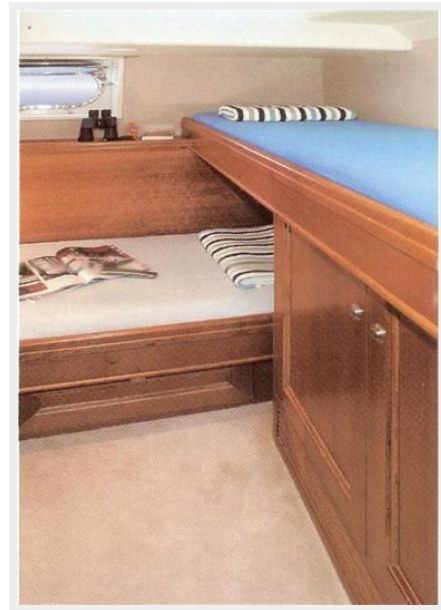
**Master bathroom**



**Lower aft deck**



### Upper aft deck





# CONTACTS

---

Andrey Shestakov, leading yacht broker of the sales department of Shestakov Yacht Sales Inc. Shestakov Yacht Sales Inc., the official representative of the Miami/Fort Lauderdale FL headquarters.

## Contact details

---

Email: [andrey@shestakovyachtsales.com](mailto:andrey@shestakovyachtsales.com)

Web: [shestakovyachtsales.com/en/](http://shestakovyachtsales.com/en/)

## Telephones

---

USA: +1(954)274-4435

## Office hours

---

Monday – Saturday: **9:00 - 21:00** EDT

Sunday: **closed**

## Address

---



Harbour Towne Marina, 850 NE 3rd St,  
STE 213, Dania, FL 33004