

NO NAME 570 BERTRAM — BERTRAM



Builder: BERTRAM

Year Built: 2007

Model: Sport Fisherman

Price: PRICE ON APPLICATION

Location: United States

LOA: 57' 0" (17.37m)

Beam: 16' 10" (5.11m)

Min Draft: 5' 4" (1.60m)

Cruise Speed: 35 Kts. (40 MPH)

Max Speed: 39 Kts. (45 MPH)

Our experienced yacht broker, Andrey Shestakov, will help you choose and buy a yacht that best suits your needs **NO NAME 570 BERTRAM — BERTRAM** from our catalogue. Presently, at Shestakov Yacht Sales Inc., we have a wide variety of yachts available on our sale's list. We also work in close contact with all the big yacht manufacturers from all over the world.

If you would like to buy a yacht **NO NAME 570 BERTRAM — BERTRAM** or would like help answering any questions concerning purchasing, selling or chartering a yacht, please call **+1(954)274-4435**

TABLE OF CONTENTS

| | |
|--|----|
| TABLE OF CONTENTS | 2 |
| SPECIFICATIONS | 4 |
| Overview | 4 |
| Basic Information | 4 |
| Dimensions | 4 |
| Speed, Capacities and Weight | 4 |
| Accommodations | 5 |
| Hull and Deck Information | 5 |
| Engine Information | 5 |
| DETAILED INFORMATION | 6 |
| Accommodations | 6 |
| Salon | 6 |
| Galley | 6 |
| Master Stateroom | 7 |
| Interior | 7 |
| Guest Stateroom | 7 |
| Deck & Hull | 8 |
| Fly Bridge | 9 |
| Electronics and Navigational Equipment | 9 |
| Engine /Mechanical Equipment | 10 |
| Cockpit | 10 |
| Owner Added Options | 10 |
| Factory Installed Options | 10 |
| Extras | 10 |
| Remarks | 11 |
| Exclusions | 11 |
| Disclaimer | 11 |
| PHOTOS | 12 |

| | |
|-----------------------|----|
| Salon | 12 |
| Salon looking forward | 12 |
| Dinette | 12 |
| Dinette View 2 | 12 |
| Galley-Dinette View | 12 |
| Master Stateroom | 13 |
| Guest Stateroom | 13 |
| Head | 13 |
| Head | 14 |
| Companionway | 14 |
| Helm | 14 |
| Helm Instruments | 14 |
| Engine Room | 14 |
| Cockpit | 15 |
| CONTACTS | 16 |
| Contact details | 16 |
| Telephones | 16 |
| Office hours | 16 |
| Address | 16 |

SPECIFICATIONS

Overview

A true 'BEST BUY"! This late model, 570 Bertram '07 is one of the best priced in the world!!! She's a beautiful 3-stateroom Sportfish Convertible equipped with top-of-the-line electronics, Murray helm chairs, Blue Water chair, watermaker, High Seas hardtop, Rupp 39' Triple Spreader outriggers and much more. A proven tournament winner. Very clean, well equipped and maintained with an open check book. Two boat owner. Easy to show in Miami. **OFFERS ENCOURAGED!**

Basic Information

Category: Sport Fisherman

Sub Category: Convertible

Model Year: 2007

Year Built: 2007

Country: United States

Dimensions

LOA: 57' 0" (17.37m)

Beam: 16' 10" (5.11m)

Min Draft: 5' 4" (1.60m)

MFG Length: 57' 0" (17.37m)

Speed, Capacities and Weight

Cruise Speed: 35 Kts. (40 MPH)

Max Speed: 39 Kts. (45 MPH)

Displacement: 78716 Pounds

Water Capacity: 250 Gallons

Holding Tank: 101 Gallons

Fuel Capacity: 1500 Gallons

Accommodations

Total Cabins: 3

Total Berths: 4

Sleeps: 6

Total Heads: 3

Hull and Deck Information

Hull Material: Fiberglass

Deck Material: Fiberglass

Hull Configuration: Deep Vee

Hull Color: White

Engine Information

Engines: 2

Manufacturer: Caterpillar

Model: C-32

Engine Type: Inboard

Fuel Type: Diesel

DETAILED INFORMATION

Accommodations

Sleeps 6 in 3 staterooms, three-head floor plan arranged with the galley and dinette forward on the deckhouse level a step up from the salon plus the VIP guest forward with Split bunks, 3rd stateroom located midship to starboard with twin lower bunks. The master stateroom is amidship and each head has a separate stall shower.

Salon

*Salon and Stateroom "Plan B" arrangement**

| | |
|---|--|
| | Bar with storage |
| | Raritan Icemaker |
| | Entertainment Center w/ Sharp LCD 27" TV |
| Upgraded interior, Marty Lowe decor Central vacuum system Lighting 24V DC and 120V AC Weight saving "Whisper Wall" system Overhead salon rod locker | Recessed Wood Blinds |
| Ultra leather-L-shaped sofa with storage underneath | Bose "Lifestyle" system |
| Cocktail table | (2) Direct TV receivers |
| | KVH Sat phone |
| | All televisions linked to satellite system |

Galley

Sub Zero Freezer /refrigerator drawers

Custom Amtico Flooring U-shaped Dinette Four (4) Burner Cooktop w/sliding cover Convection Microwave Corian Countertops

Sink

Cherry Cabinets

Master Stateroom

Island queen berth Highgloss cherrywood finish Flat screen television with DVD/CD

Hanging locker, drawers

MASTER HEAD:

Cherry Cabinets

Corian Countertops

Vanity w/sink

Stall Shower

Tecma elongated heads

Mirrored Overhead

Antico flooring

Interior

Guest Stateroom

Forward: - VIP Sharp TV

Separate AM/FM stereo CD/DVD

Hanging Locker & Drawers

Side: Guest Side by side twin berths Sharp LCD TV

CD/DVD - AM/FM stereo

Companionway: Washer/Dryer

Guest Head and Day Head:

Cherry Cabinets
 Corian Counter tops
 Vanity w/sink
 Stall shower
 Tecma Elongated heads
 Mirrored overhead
 Amtico Flooring

Deck & Hull

| | |
|---|---|
| | Tournament Helm |
| | Custom Wheel |
| | Side Mount Handles & Steering Wheel |
| High Seas Tuna Tower | |
| Integrated bow pulpit with windlass and stainless steel chute Low profile foredeck hatches Underwater lighting (3) Armorcote Premium ISO-NPG Gelcoat Heavy duty white rubrail with stainless insert | Palm Beach Bow Rail Pipe Welders Polished Rail Package |
| | Low Profile foredeck hatches |
| | FB/deck/boot stripe modifications |

Fly Bridge

High Seas Fiberglass Hardtop

Rupp 39' Triple Spreader outriggers

Rupp Center Rigger

Murray Brothers helm chairs Three sided enclosure Huge flybridge with U-shaped lounge seating for (8) forward of the helm Overhead lights, (6) in hardtop-(4) white (2) red

Custom Wheel

Side Mount Single Lever Controls

Custom Steering Wheel

Double aft bridge rail with 8 Rod Holders Custom "Palm Beach" Bow Rail and Custom bridge ladder 24V and 12V distribution panels Sirius CD Stereo with watertight speakers Seat foot rest

Aft quartz spreader lights

Molded nav lights

Cold Plate for FB cold box

Electronics and Navigational Equipment

2 Northstar 61001 Radar & Plotter

Garmin 3210 GPS

Simrad AP 25 Autopilot

Northstar 6002 GPS

Icom M604 VHF

Furuno RD 30

Ritchie Compass

2 CAT Digital Displays

Windlass Switch

ACR 600 Remote Spotlight

Engine /Mechanical Equipment

Single fiberglass fuel tank with baffles and sight gauge Trolling valves Power actuated electronics console Reverse Osmosis 600gpd watermaker (2) 23 kw Kohler generators - (1) with 300 hours & (1) with 1300 hours Galvanic Isolators Emergency bilge water evacuation system (2) 50 amp converters

(2) Engine Room Blowers

Engine hours: 2200

Cockpit

Bluewater White/Large Tuna Chair

120sqft Cockpit Removable fish box with macerator pump Sea and fresh water washdown Eskimo icemaker plumbed to fish box Storage lockers Molded boarding steps, Port & Starboard Transom Box

Transom Door & Gate

Fast cockpit drainage system Cockpit coaming padding Glendenning cable master with (2) shore power supply Prep center with tackle drawers in engine room entrance door

Full tackle center with sink, larger freezer and 2nd freezer

Extra large cockpit sole fish box

Owner Added Options

2nd 23kW Kohler generator, installed June 2010

FCI Max Q Watermaker /600 GPD

ACR 600 Remote Spotlight

Factory Installed Options

Extras

2nd 23kW Kohler generator, installed June 2010

FCI 600gpd watermaker Eskimo ice machine Bluewater fighting chair

Murray Brothers helm chairs Extra large cockpit sole fish box High Seas hardtop Rupp riggers and center rigger

Remarks

Proven tournament winner. Professionally maintained. Owner moving up. A true "Best Buy" late model 57' Bertram. Offers encouraged.

Exclusions

Owner's personal belongings.

Disclaimer

The Company offers the details of this vessel or yacht in good faith but cannot guarantee or warrant the accuracy of this information nor warrant the condition of the vessel. A buyer should instruct his representatives, agents, or his surveyors, to investigate such details as the buyer desires validated. This vessel or yacht is offered subject to prior sale, price change, or withdrawal without notice.

PHOTOS

Salon



Salon looking forward



Dinette



Dinette View 2



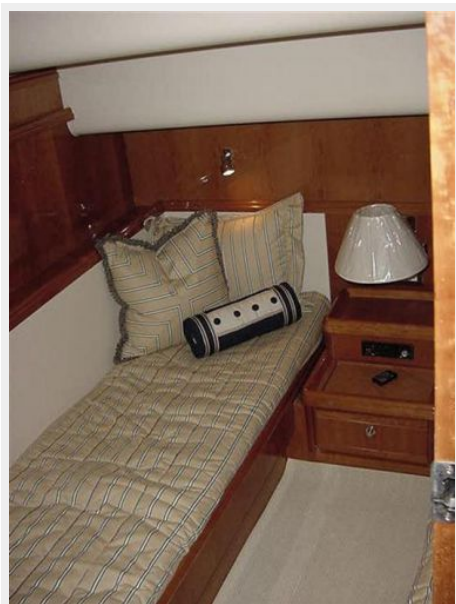
Galley-Dinette View



Master Stateroom



Guest Stateroom



Head



Head



Companionway



Helm



Helm Instruments



Engine Room



Cockpit



CONTACTS

Andrey Shestakov, leading yacht broker of the sales department of Shestakov Yacht Sales Inc. Shestakov Yacht Sales Inc., the official representative of the Miami/Fort Lauderdale FL headquarters.

Contact details

Email: andrey@shestakovyachtsales.com

Web: shestakovyachtsales.com/en/

Telephones

USA: +1(954)274-4435

Office hours

Monday – Saturday: **9:00 - 21:00** EDT

Sunday: **closed**

Address



Harbour Towne Marina, 850 NE 3rd St,
STE 213, Dania, FL 33004