

MIZAR OF LONDON — AKHIR



Builder: [AKHIR](#)

Year Built: 1991

Model: Motor Yacht

Price: PRICE ON APPLICATION

Location: Spain

LOA: 88' 7" (27.00m)

Beam: 20' 5" (6.20m)

Max Draft: 6' 3" (1.90m)

Cruise Speed: 25 Kts. (29 MPH)

Max Speed: 28 Kts. (32 MPH)

Our experienced yacht broker, Andrey Shestakov, will help you choose and buy a yacht that best suits your needs **Mizar of London — AKHIR** from our catalogue. Presently, at Shestakov Yacht Sales Inc., we have a wide variety of yachts available on our sale's list. We also work in close contact with all the big yacht manufacturers from all over the world.

If you would like to buy a yacht **Mizar of London — AKHIR** or would like help answering any questions concerning purchasing, selling or chartering a yacht, please call **+1(954)274-4435**

TABLE OF CONTENTS

TABLE OF CONTENTS	2
SPECIFICATIONS	3
Overview	3
Basic Information	3
Dimensions	3
Speed, Capacities and Weight	4
Accommodations	4
Hull and Deck Information	4
Engine Information	4
PHOTOS	5
cockpit	6
helm on fly	7
flybridge	7
BBQ on flybridge	7
seating on fly	7
CONTACTS	8
Contact details	8
Telephones	8
Office hours	8
Address	8

SPECIFICATIONS

Overview

Mizar offers complete luxury and style. Her current owner completely re-designed her interior using the finest materials. She has four cabins (plus two crew cabins), all with en-suite bathrooms, independent sound systems and air conditioning. She has a very spacious saloon/dining area, and a well equipped galley with dishwasher, large fridge/freezers, oven and microwave plus washing machine and dryer. An impressive flybridge with dining area, barbecue, sunbeds and bimini make Mizar the perfect yacht for chartering. She has previously earned a good charter income, and the charter licence and MCA compliance record should not be a problem to renew. Technically she is very well equipped with two MTU engines, two generators, hydraulic bow thrusters, two electric anchor windlasses, hydraulic passarell and complete navigation and communication equipment. She also comes with an Avon jet rib, jet ski, waterskis, knee and wake board and a doughnut.

Basic Information

Category: Motor Yacht

Sub Category: Flybridge

Model Year: 1991

Year Built: 1991

Refit Year: 2006

Refit Type: Complete refit.

Country: Spain

Fly Bridge: Yes

Cockpit: Yes

Dimensions

LOA: 88' 7" (27.00m)

Beam: 20' 5" (6.20m)

Max Draft: 6' 3" (1.90m)

Speed, Capacities and Weight

Cruise Speed: 25 Kts. (29 MPH)

Cruise Speed RPM: 2000 Kts.

Max Speed: 28 Kts. (32 MPH)

Max Speed RPM: 2000 Kts.

Displacement: 232697.917541 Pounds

Water Capacity: 581.1785144 Gallons

Fuel Capacity: 2509.634494 Gallons

Accommodations

Total Cabins: 4

Total Berths: 6

Sleeps: 8

Total Heads: 4

Captain Cabin: True

Crew Cabin: 2

Crew Berths: 2

Crew Sleeps: 2

Crew Heads: 1

Hull and Deck Information

Hull Material: Wood

Deck Material: Teak

Hull Configuration: Semi-Displacement

Hull Color: White

Hull Finish: Stainless Steel

Engine Information

Engines: 2

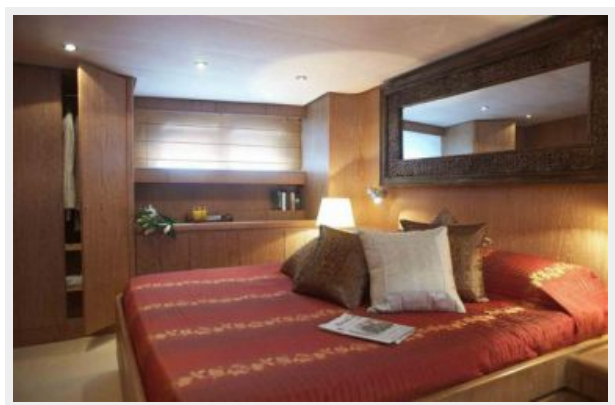
Manufacturer: MTU

Model: MTU12V396TB93

Engine Type: Inboard

Fuel Type: Diesel

PHOTOS





cockpit



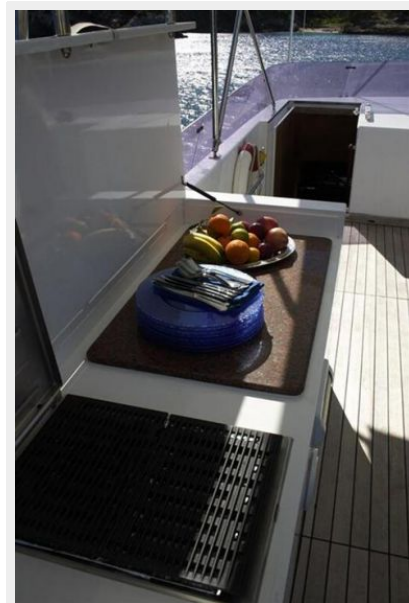
helm on fly



flybridge



BBQ on flybridge



seating on fly



CONTACTS

Andrey Shestakov, leading yacht broker of the sales department of Shestakov Yacht Sales Inc. Shestakov Yacht Sales Inc., the official representative of the Miami/Fort Lauderdale FL headquarters.

Contact details

Email: andrey@shestakovyachtsales.com

Web: shestakovyachtsales.com/en/

Telephones

USA: +1(954)274-4435

Office hours

Monday – Saturday: **9:00 - 21:00** EDT

Sunday: **closed**

Address



Harbour Towne Marina, 850 NE 3rd St,
STE 213, Dania, FL 33004