

LA PERLA — JONGERT



Builder: JONGERT

Year Built: 1989

Model: Motorsailor

Price: PRICE ON APPLICATION

Location: United States

LOA: 98' 6" (30.02m)

Beam: 21' 6" (6.55m)

Min Draft: 12' 6" (3.81m)

Cruise Speed: 10 Kts. (12 MPH)

Max Speed: 12 Kts. (14 MPH)

Our experienced yacht broker, Andrey Shestakov, will help you choose and buy a yacht that best suits your needs **La Perla — JONGERT** from our catalogue. Presently, at Shestakov Yacht Sales Inc., we have a wide variety of yachts available on our sale's list. We also work in close contact with all the big yacht manufacturers from all over the world.

If you would like to buy a yacht **La Perla — JONGERT** or would like help answering any questions concerning purchasing, selling or chartering a yacht, please call **+1(954)274-4435**

TABLE OF CONTENTS

TABLE OF CONTENTS	2
SPECIFICATIONS	4
Basic Information	4
Dimensions	4
Speed, Capacities and Weight	4
Accommodations	4
Hull and Deck Information	5
Engine Information	5
DETAILED INFORMATION	6
Accommodations	6
Salon	6
Covered Cockpit	6
Crew Area	6
Forward Deck	7
Galley	7
Audio And Visual Equipment	7
Electrical & Mechanical Equipment	7
Engine Room	8
Electronics & Navigation	8
Flybridge	9
Owners Stateroom	9
1st Guest State Room	10
2nd guest State Room	10
Aft deck	10
Pilothouse	10
Refits	10
Sails and Rigging	12
Exclusions	12

Tenders & Toys	12
Remarks	12
Exclusions	13
Disclaimer	13
PHOTOS	14
Dining	14
Salon	14
Guest	14
Master	14
Stairs	15
Aft Deck	15
Running Shot	15
CONTACTS	16
Contact details	16
Telephones	16
Office hours	16
Address	16

SPECIFICATIONS

Basic Information

Category: Motorsailor

Model Year: 1989

Year Built: 1989

Refit Year: 2008

Country: United States

Cockpit: Yes

Dimensions

LOA: 98' 6" (30.02m)

LWL: 69' 9" (21.26m)

LOD: 85' 0" (25.91m)

Beam: 21' 6" (6.55m)

Min Draft: 12' 6" (3.81m)

MFG Length: 96' 5" (29.39m)

Speed, Capacities and Weight

Cruise Speed: 10 Kts. (12 MPH)

Cruise Speed Range: 1600

Max Speed: 12 Kts. (14 MPH)

Gross Tonnage: 110 Pounds

Water Capacity: 980 Gallons

Holding Tank: 560 Gallons

Fuel Capacity: 4300 Gallons

Accommodations

Total Cabins: 3

Total Berths: 1

Sleeps: 7

Total Heads: 5

Captain Cabin: True

Crew Cabin: 2

Crew Berths: 4

Crew Sleeps: 1

Crew Heads: 1

Hull and Deck Information

Hull Material: Steel

Deck Material: Teak

Hull Designer: Jongert

Exterior Designer: Peter Sijm

Engine Information

Engines: 1

Manufacturer: Caterpillar

Model: 3406

Engine Type: Inboard

Fuel Type: Diesel

DETAILED INFORMATION

Accommodations

LA PERLA is a refined solid steel blue water motorsailor that sails. The interior is inspired by classic motor yacht volumes and views. The Master cabin has dominant transom windows, great old world ambiance, very sexy. Outdoor living space includes a substantial flying bridge with all weather enclosable aft deck cockpit. There is excellent water access by built in stairway to the sea and a dock for your dingy. The bow sprit and decks are generously proportioned. Dutch Jongert pedigree is evident through out LA PERLA. She sleeps seven in the owner's party in three double staterooms plus four crew in two twin cabin staterooms. There is ample crew separation.

Salon

LA PERLA is boarded on either port or starboard side of the on-deck covered dining /cockpit area. The entrance to the main salon is on the port side of the covered cockpit and is down four steps. The salon is finished in the beautiful satin finished teak that Jongert is famous for. To port is a built-in stereo center with beautifully built-in storage drawers for china and cutlery. The starboard side of the main salon features an L-shaped couch measuring approximately 12 feet in total and there is a custom teak/hydraulic table that is a wonder to watch as it opens automatically and converts itself from a cocktail to dining table. An especially nice feature of the main salon on LA PERLA is that it is so bright and airy and that one can look out, while seated, through large windows both port and starboard. Additionally, there is a double set of windows to the aft cockpit and the long view forward through the raised pilothouse that contributes to an overall feeling of spaciousness and essentially 360 degree views from LA PERLA's salon.

Covered Cockpit

The covered cockpit is large measuring approximately 10x12 feet and is suitable for dining eight comfortably. With the hard top above, this area provides protection from the sunlight and yet with her three-sided soft enclosure she can be fully enclosed or wide open for Caribbean breezes. This makes a great place to enjoy the outside for those who do not have their tan up to speed as yet.

Crew Area

Forward of the galley, up two steps, is a raised crew mess area and opposite to starboard are the two-crew staterooms. The forward stateroom features over and under bunks with en suite head and shower, opening ports for fresh air and direct access to the fore deck. The second crew cabin

is the captains cabin with a large double bed below and a single above to starboard. The Corian and teak head is quite large and features a separate tile step-down shower. There are two opening ports in this area as well as two large full-length hanging lockers.

Forward Deck

Unlike most sailing yachts, the fore deck on LA PERLA provides the same amenities as many large motor yachts. There is built-in seating facing forward and enough room on deck to make this a third area to take the sun. Lastly, the final place on the outside to mention is the extended bowsprit. Not only does it provide the common sense answer to handle multiple anchors but is it a great place to walk out on under way and to look back at the vessel under sail.

Galley

The galley is forward of the main salon and down six steps. The galley can be completely enclosed from the rest of the boat and it is quite large. Measuring approximately 10x8 in floor space the chef finds it very easy to work in the galley and with built-in freezers and refrigerators and the large amount of counter space available, a good chef has no trouble in turning out gourmet meals. NEW in Galley in 2001: Corian Faucets Princess Gourmet Oven Microwave, Coffee Maker Equator S.S. Dishwasher Pots & Pans - Crockery, Crew flatware Extractor Fan Original Galley Equipment: Refrigerator & Freezer

Audio And Visual Equipment

Panasonic DVD-RV31 JVC P175EE VCR Pioneer Digital Surround Receiver/ Multi System Pioneer 6 Disc CD Player 2 x Multi System TV's w. VCR (PAL & US) Stereo for Captain's cabin, bridge, pilothouse and aft deck

Electrical & Mechanical Equipment

Atlas Frequency Converter 25 KW (2010)

New hot water heating system (2010)

New AC chiller (2010)

All thru hull fittings rebuilt (2010)

Most bilges scraped and painted (2010)

Rebuilt shaft system (2010)

Rebuilt rudder system (2010)

Bottom stripped to bare metal and repainted (2010)

Audio gage (2010)

Windlass rebuilt (2008)

Bow Thruster: Manheim Rexroth 80 hp Hydraulic off main engine (2008)

60 Cycle Power 100 AMP Throughout, single phase (2001) All new shore cords (2001) 24V System (2001)

GEC batteries (2001) Heart Inverter charger x 2 w/ 2 Mastervolt 50 amp (2001) Step-Up Chargers (2001) Start Power service supplies (2001)

1200 GPD Sea Recovery Water Maker (2001) 3 Ton Marine Air Chiller x 2/ Air Conditioning total of 8 Zones, 5 new (2001)

AC and DC Electrical Panels (2001) ASKO Washer and separate Dryer (2001) Bilge/ Fire Pump(2001) 110V. Engine Room Fan (2001) 24V. Engine Room Fan (2001) All Tanks opened, inspected and cleaned (2001) Lewmar Hydraulic Power pack (2001) Engine controls rebuilt (Air Shift) (2001) New lighting for navigation (2001)

Engine Room

LA PERLA'S engine room is full beam, full heights, well ventilated and large enough to easily work completely around the main engine. Engine rooms typically are best maintained when there is ample space to get at everything and LA PERLA'S engineering spaces are excellent.

2001 Refit

Engine: 1 x Caterpillar 3406/ 400HP New 2001 885 Hrs. (October 2012) Generator: 2 x Isuzu Heavy Duty Commercial Gens 41 kW each 2,235 Hrs. each approximately (October 2012)

Electronics & Navigation

New 2009:

- Furuno 3-D Nav Net Chart
- 24 mile LCD Radar System
- (2) X 18" Nav Net Monitors

- (1) 17" Hatteland Monitor
- (7) Furuno Analog/Digital Displays
- Sirius weather package
- Furuno AIS
- PB 200 ILocal Weather System
- Maretron Full function information in captain's cabin
- Furuno Fish and Depth Sounder

New 2006

- LCD 48 mile Furuno Color Radar
- B&G Network Depth Sounder

New 2001:

- Robertson AP-20 Auto Pilot (2 Stations)
- ICOM VHF
- ICOM VHF Hand Held
- 2 x FRS ICOM "Walkie Talkie" (FRS)
- Furuno D-Fax (Weather)
- Hewlett Packard 5.0 gig with updated Maptech Nav. - 2 Monitors

Flybridge

Forward and up six steps from the aft deck cockpit or from the Pilot House is the raised sun bridge or flying bridge area. This is a feature pioneered by LA PERLA and her 3 sister ships being copied by larger yachts worldwide. Once you have had a yacht with an on deck covered cockpit and the ability to go up on the flying bridge to take the sun or to sail the ship or to simply enjoy the fabulous view from there, stepping back in to the traditional, non-fly bridge boat can be a bit difficult.

Owners Stateroom

As is typical in the larger Jongerts, the owner's stateroom is truly luxurious. Upon entering you are struck by the transom window vista and spaciousness of the suite. The queen size bed is built-in on the centerline with access in and out of the master bed on both sides with generous drawers, lockers and bookcases. There is a seating couch on the starboard side and opposite to port is a make-up table with leather chair and vanity. This stateroom extends very far forward and has on the forward end of the stateroom a built-in Sony stereo system, Grundig TV, three large hanging lockers and numerous other drawers and lockers. The owners' head, which is forward to port, features a full size tub and a separate shower, head and bidet accented in gold and a lot of

floor area. Essentially, the owner's suite on LA PERLA is equal to something that one might expect in the finest of hotels, both in quality and in size.

Ist Guest State Room

The owners and guest cabins are located aft of the main salon off a central hallway. The starboard guest cabin is finished in the same satin teak as the main salon, has large twin singles port and starboard and a Pullman berth which drops down for additional sleeping. Additionally there is a built-in CD player, two large stainless steel opening ports and forward is a large teak, gold and Corian head with separate shower.

2nd guest State Room

This stateroom is essentially a mirror image of the starboard stateroom finished in the same Dutch teak craftsmanship. Both staterooms have several drawers and lockers beneath the bed and good size hanging closets.

Aft deck

The aft deck is large with built-in teak seating all across the transom, teak steamer chairs and a very large aft deck extension. This is not only to store the dinghy but also importantly drops down to make a stairway to the sea and a dock for the dinghy. New aft deck enclosure. All new sundeck cushions.

Pilothouse

The raised forward pilothouse is up three steps from the main salon where a center-mounted helm provides excellent visibility forward and along either side. In the aft starboard corner of the pilothouse is a large open ships' office with built-in computers, weather fax and necessary electronics, some dated. A special feature of LA PERLA is two additional doors from the bridge. One leads directly out on to the port side of the fore deck and makes it very easy for the captain to access the deck for docking or anchoring maneuvers. The other special staircase is a half spiral in custom teak leading up to the fly bridge area.

Refits

Refit 2002

- 1 Caterpillar 3406 400hp
- 2 Isuzu Generators 41 kw each

- New 24v system
- New GEC batteries
- Recovery Water Maker 1200g PD
- 2 new 3 ton Marine Air chilled water air conditioning chillers
- 5 zones A/C new
- New AC/DC electric panels
- New Asko washer and Dryer
- New bilge and fire pump
- New Lewmar Hydraulic power pack
- Engine controls rebuilt
- New navigation lighting
- Windless rebuilt
- 2 new Heart inverters
- 2 new Mastervolt 50 amp battery chargers

Refit 2005

- Hull painted Awlgrip flag blue
- All new standing rigging
- Rondal furlers rebuilt
- Main and mizzen masts reconditioned and repainted
- Reckmann head sail Furlers rebuilt with all new rod rigging

Refit 2008/'09

- Paint all awlgrip above the deck; all hardware and windows removed and rebedded
- Companionway hatch from flybridge to salon rebuilt
- Reconditioned flybridge deck
- 3 new Lewmar deck hatches in pilothouse and office replaced
- Decks recaulked and repaired as needed
- Reconditioned hull bottom plate forward
- Reconditioned fore peak, 7 coats primer, 3 top coats
- Reconditioned lazarette
- Reconditioned exterior varnish
- Reconditioned all dorade boxes
- All exterior fastenings replaced
- anchor windlass system rebuilt
- 2 CQR anchors and 2 x 300' of chain hot dip galvanized

Refit 2010:

- Bottom stripped to bare metal. Recoated with Interlux anti fouling system
- Bottom Audio gage
- Rebuilt Rudder System
- Atlas frequency/converter 25 KW

- Most bilges scraped and painted
- New A/C and watermaker piping
- New AC Chiller
- New bilge pump piping
- New main engine sea chest valves
- New hot water heating system
- Rebuilt Shaft system
- All thru hull fittings rebuilt

Sails and Rigging

130% genoa; staysail; main and mizzen new 1998 All running rigging replaced 2002 Complete new standing rigging 2005 Rondal & Reckmen furlers rebuild 2005 Masts and booms reconditioned and repainted 2005

Masts and booms reconditioned 2009

Exclusions

A detailed list of exclusions will be provided pursuant to a purchase agreement.

Tenders & Toys

New 2004 A-B 15' rigid bottom inflatable with 50 HP 4 stroke Yamaha outboard 2 Kayaks, Mistral Windglider, Bauer 2 Tank Yacht Pack Dive Station

Remarks

LA PERLA is a classic Dutch yacht with substantially new systems and cosmetics. She suffered grounding and was subsequently brought to the Palmer Johnson shipyard in Savannah, Georgia for a refit lasting approximately one year in 2002 under the expert supervision of Patton Marine Surveyors. LA PERLA's large volume interior should not confuse anyone looking for a luxury yacht that really sails. Yes, she has a Dutch M/Y interior, her master stateroom with bullet-proof transom windows are as sexy as a yacht comes. Yes she is an all weather, all ocean sailing yacht. This Jongert is the for-runner to the successful Perini fly bridge motor sailing yachts. LA PERLA is available for a fraction of comparably equipped yachts due to the owner's need for a change after his 14 year affair with LA PERLA.

Exclusions

Owner's personal belongings.

Disclaimer

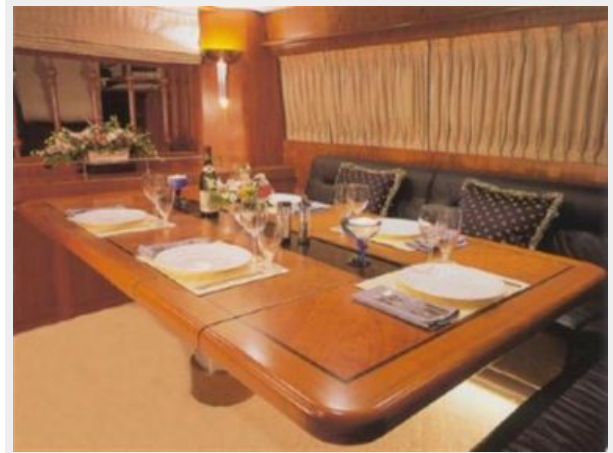
The Company offers the details of this vessel or yacht in good faith but cannot guarantee or warrant the accuracy of this information nor warrant the condition of the vessel. A buyer should instruct his representatives, agents, or his surveyors, to investigate such details as the buyer desires validated. This vessel or yacht is offered subject to prior sale, price change, or withdrawal without notice.

PHOTOS

Salon



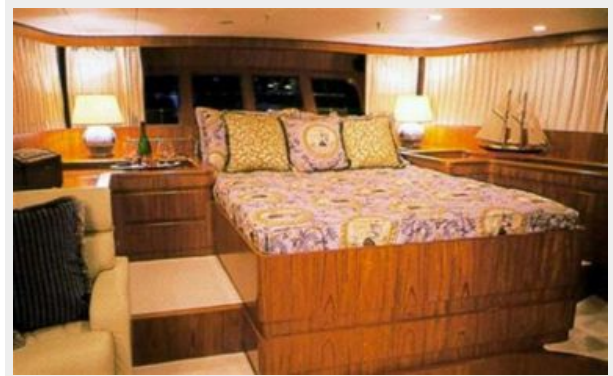
Dining



Guest



Master



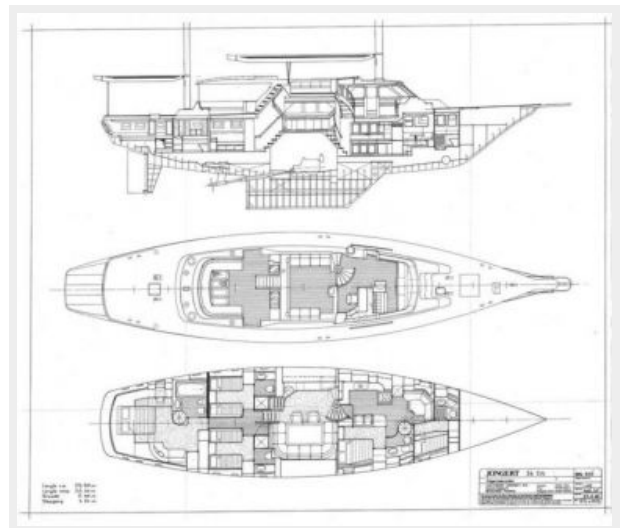
Stairs



Aft Deck



Running Shot



CONTACTS

Andrey Shestakov, leading yacht broker of the sales department of Shestakov Yacht Sales Inc. Shestakov Yacht Sales Inc., the official representative of the Miami/Fort Lauderdale FL headquarters.

Contact details

Email: andrey@shestakovyachtsales.com

Web: shestakovyachtsales.com/en/

Telephones

USA: +1(954)274-4435

Office hours

Monday – Saturday: **9:00 - 21:00** EDT

Sunday: **closed**

Address



Harbour Towne Marina, 850 NE 3rd St,
STE 213, Dania, FL 33004