

## OCEANS GRACE — HATTERAS



**Builder:** HATTERAS

**Year Built:** 1981

**Model:** Motor Yacht

**Price:** PRICE ON APPLICATION

**Location:** United States

**LOA:** 56' 0" (17.07m)

**Beam:** 18' 0" (5.49m)

**Min Draft:** 5' 0" (1.50m)

**Cruise Speed:** 16 Kts. (18 MPH)

**Max Speed:** 18 Kts. (21 MPH)

Our experienced yacht broker, Andrey Shestakov, will help you choose and buy a yacht that best suits your needs **OCEANS GRACE — HATTERAS** from our catalogue. Presently, at Shestakov Yacht Sales Inc., we have a wide variety of yachts available on our sale's list. We also work in close contact with all the big yacht manufacturers from all over the world.

If you would like to buy a yacht **OCEANS GRACE — HATTERAS** or would like help answering any questions concerning purchasing, selling or chartering a yacht, please call **+1(954)274-4435**

# TABLE OF CONTENTS

TABLE OF CONTENTS	2
SPECIFICATIONS	4
Overview	4
Basic Information	4
Dimensions	4
Speed, Capacities and Weight	4
Accommodations	5
Hull and Deck Information	5
Engine Information	5
DETAILED INFORMATION	6
Vessel Walkthrough	6
Salon and Pilothouse	6
Galley and Dinette	6
Master Stateroom	7
Guest Stateroom	7
Guest Stateroom Head & Hallway	7
Forward Stateroom with Head	7
Pilothouse Electronics	8
Flybridge Electronics	8
Flybridge	8
Aft deck	8
Fore Deck	9
Engine Rooms (2)	9
Electrical System	9
Remarks	9
Exclusions	9
Disclaimer	10
PHOTOS	11

---

Salon Looking Forward	11
Salon Looking Aft	11
Pilothouse Floor - NEW	11
Head	12
Teak Table	12
TV	12
Bow	13
Walkaround	13
Starboard Profile	13
<b>CONTACTS</b>	<b>14</b>
Contact details	14
Telephones	14
Office hours	14
Address	14

---

# SPECIFICATIONS

---

## Overview

---

This is the cleanest Motoryacht that you will be able to find in this age and price. **100% CREAM PUFF!** Both Engines rebuilt with approximately 100 hours SMOH. Onan 21.5 Generator, Ice cold A/C. Electric Davit for Tender. Raytheon Ray Chart 610-T, 398 GPS, Northstar 800 Loran C, Raytheon R21-XX Raster Scan Radar. One of Hatteras' most popular layouts with Master aft and two other wonderfully appointed staterooms. 3 Heads, huge salon area, full galley. Tremendous Live-aboard. All wood in excellent condition, all appliances in excellent condition. Very Clean Boat!

## Basic Information

---

**Category:** Motor Yacht

**Sub Category:** Liveaboard

**Model Year:** 1981

**Year Built:** 1981

**Country:** United States

**Fly Bridge:** Yes

## Dimensions

---

**LOA:** 56' 0" (17.07m)

**Beam:** 18' 0" (5.49m)

**Min Draft:** 5' 0" (1.50m)

## Speed, Capacities and Weight

---

**Cruise Speed:** 16 Kts. (18 MPH)

**Max Speed:** 18 Kts. (21 MPH)

**Displacement:** 74000 Pounds

**Water Capacity:** 350 Gallons

**Fuel Capacity:** 1020 Gallons

---

## Accommodations

---

**Total Cabins:** 3

**Total Berths:** 5

**Sleeps:** 6

**Total Heads:** 3

---

## Hull and Deck Information

---

**Hull Material:** Fiberglass

**Hull Designer:** J. Hargrave

---

## Engine Information

---

**Engines:** 2

**Manufacturer:** Detroit Diesel

**Model:** 8V92TI

**Engine Type:** Inboard

**Fuel Type:** Diesel

# DETAILED INFORMATION

---

## Vessel Walkthrough

---

This is the cleanest Motoryacht that you will be able to find in this age and price.

**2010 Insurance Survey shows this yachts as "ABOVE AVERAGE" condition with a value of \$355,500!**

**100% CREAM PUFF!** Both Engines rebuilt with approximately 100 hours SMOH. Onan 21.5 Generator, Ice cold A/C. Electric Davit for Tender. Raytheon Ray Chart 610-T, 398 GPS, Northstar 800 Loran C, Raytheon R21-XX Raster Scan Radar. One of Hatteras' most popular layouts with Master aft and two other wonderfully appointed staterooms. 3 Heads, huge salon area, full galley. Tremendous Live-aboard. All wood in excellent condition, all appliances in excellent condition. Very Clean Boat!

## Salon and Pilothouse

---

- Double Swing Doors from Aft Lounge
- Wrap Around Windows with Shades
- Full Size Sofa
- Love Seat
- Chairs (2)
- Coffee & End Table
- Carpet Protector
- Indirect Lighting
- Surround Sound System
- KVH satellite with Direct TV
- Toshiba TV
- Sony DVD
- Sony AM/FM Receiver
- Sony 5 Disc CD Changer
- Port & Stbd Wing Doors
- Bench Style Helm Seating
- Etched Decorative Glass
- Companionway to Galley
- Electrical Control Boards

## Galley and Dinette

---

- GE Full Size S/S Fridge/Freezer
- Modern Maid Four Burner Stove
- Modern Maid Dishwasher
- Modern Maid Oven
- Booth Style Dinette (with storage beneath)
- Sliding Windows
- Separate A/C
- Companion Way from Salon, Hallway, & Forward Stateroom

- Power Vent
- Nutone Blender

---

## Master Stateroom

---

- Centerline Queen Berth with Lights
- Port & Stbd Bureaus with Lockers & Drawers
- Large Cedar Lined Hanging Locker
- Portholes (3)
- Aft Escape hatches (2)
- TV/DVD
- Separate A/C
- Head
- Shower/Bathtub
- Electric Toilet
- Mirrored Vanity

---

## Guest Stateroom

---

- Twin Berths
- Night Table
- Reading Lights
- Screened Portholes (2)
- Separate A/C

---

## Guest Stateroom Head & Hallway

---

- Separate Stall Shower
- Electric Toilet (Rebuilt Pump)
- Power Vent
- Mirrored Vanity with Storage
- Frigid Air Washer & Dryer
- Storage Locker
- Engine-room Access Doors (4)
- Overhead Lighting

---

## Forward Stateroom with Head

---

- Twin Bunk Style Beds (2)
- Two Port Holes Plus Escape Hatch
- Reading Lights
- Ship phone
- Hanging Locker
- Dressing Mirror
- TV/DVD
- Access To Anchor Locker
- Head
- Stall Shower
- Electric Toilet
- Mirrored Vanity with Storage
- Shower Sump
- Power Vent

## Pilothouse Electronics

---

- Raytheon Ray chart 610T
- Raytheon Raychart 611T
- Raytheon Nav 398 GPS/Loran
- Northstar 800 Loran C
- Raytheon R21XX Raster Scan Radar
- Raytheon RayPilot 650
- Raytheon 202 VHF/Haler
- Raytheon 55 VHF/Radio Phone
- Autohelm Depth Finder/Trip
- Ritchie Compass

## Flybridge Electronics

---

- Raytheon Nav GPS
- Horizon VHF
- Ship Phone
- Echo Pilot
- Auto Pilot
- Datamarine LX201
- Aquatronics Stereo/Tape
- Trim Tab Remotes

## Flybridge

---

- Captain, Port, & Stbd Pedestal Chairs
- Bimini Top
- 'L'-Shaped Aft Lounge
- Electric Davit for Tender
- Stainless Grill

## Aft deck

---

Entry from Port & Stbd Walkways Via Wood Swing Doors

- Scotsman Icemaker
- Wet Bar
- Lounge Seating
- Lay Down Carpet
- Storage Lockers
- Flybridge Ladder
- Swim Platform with Boarding Ladder
- New Hi-Low Teak Table



## Fore Deck

---

- Large Side Decks from Aft Lounge
- Molded Bench Seat
- Teak Bow Pulpit
- Galley Maid Windlass w/Chain, Rode, & Anchor
- Storage Boxes
- Freshwater Outlet
- New Windshield & Side Doors Covers
- Reset Windshield

## Engine Rooms (2)

---

- Kidd Auto Halon Fire Extinguisher (3)
- Sentry 32Volt 30 Amp Battery Charger
- Fuel Transfer Valves
- New Batteries (House Bank)
- Hot Water Heater (40 Gal) Fans
- Racor Fuel Filters
- Blowers
- New Battery Charger

## Electrical System

---

Located under galley sole.

- Onan 21.5 KW Generator 360 hours (Upgraded)
- Cruisair Air Conditioners (New Water Pump)
- Galley 10,000 BTU
- Crew Quarters 7,000 BTU
- Salon 24,000 BTU
- Guest 7,000 BTU
- Master 12,000 BTU

## Remarks

---

If you are in the market for any Hatteras, you owe it to yourself to at the very least, take a look at the magnificent 56' Motoryacht. This is in 100% excellent condition! Owners are moving up! This is an opportunity to see a Hatteras that has been maintained as a mega yacht would. Interior & Exterior are very good!

## Exclusions

---

Owner's personal belongings.

## Disclaimer

---

The Company offers the details of this vessel or yacht in good faith but cannot guarantee or warrant the accuracy of this information nor warrant the condition of the vessel. A buyer should instruct his representatives, agents, or his surveyors, to investigate such details as the buyer desires validated. This vessel or yacht is offered subject to prior sale, price change, or withdrawal without notice.

# PHOTOS

Salon Looking Forward



Salon Looking Aft

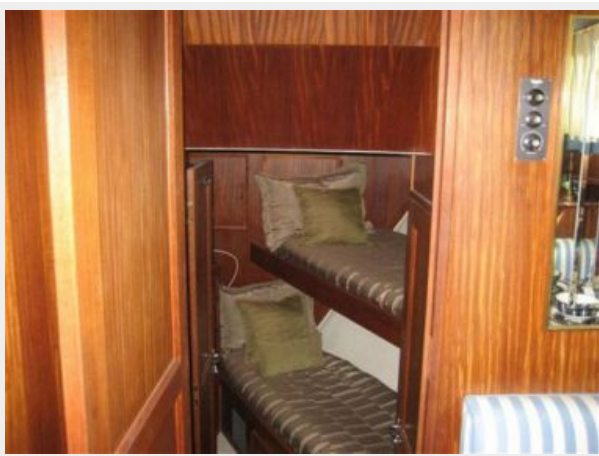


Pilothouse Floor - NEW





Head



Teak Table



TV





**Bow**



**Walkaround**



**Starboard Profile**



# CONTACTS

---

Andrey Shestakov, leading yacht broker of the sales department of Shestakov Yacht Sales Inc. Shestakov Yacht Sales Inc., the official representative of the Miami/Fort Lauderdale FL headquarters.

## Contact details

---

Email: [andrey@shestakovyachtsales.com](mailto:andrey@shestakovyachtsales.com)

Web: [shestakovyachtsales.com/en/](http://shestakovyachtsales.com/en/)

## Telephones

---

USA: +1(954)274-4435

## Office hours

---

Monday – Saturday: **9:00 - 21:00** EDT

Sunday: **closed**

## Address

---



Harbour Towne Marina, 850 NE 3rd St,  
STE 213, Dania, FL 33004