

TWO MARTINIS — WENDON MANUFACTURING



Судостроитель:

WENDON MANUFACTURING

Год постройки: 2000

Модель: Моторная яхта

Цена: ЦЕНА ЯХТЫ ПО ЗАПРОСУ

Местонахождение: United States

Длина общая: 48' 0" (14.63m)

Ширина: 14' 6" (4.42m)

Макс. осадка: 3' 9" (1.14m)

Купить **TWO MARTINIS — WENDON MANUFACTURING** а также выбрать подходящую вам яхту из нашего каталога яхт вам поможет опытный яхтенный брокер Андрей Шестаков. На сегодняшний день компания **Shestakov Yacht Sales Inc.** имеет большое количество яхт в собственном списке продаж, а также тесно сотрудничает со всеми крупными яхтенными производителями по всему миру.

Для того чтобы купить яхту **TWO MARTINIS — WENDON MANUFACTURING** а также проконсультироваться по любому вопросу связанному с покупкой, продажей, чартером яхт позвоните по телефону **+7(918)465-66-44**.

ОГЛАВЛЕНИЕ

ОГЛАВЛЕНИЕ	2
ХАРАКТЕРИСТИКИ	4
Обзор	4
Основная информация	4
Размеры	4
Скорость, вместимость и масса	4
Размещение	5
Корпус и палуба	5
Информация о двигателе	5
ПОДРОБНОЕ ОПИСАНИЕ	6
OVERVIEW	6
Salon	6
Galley/Laundry	7
Master Stateroom Fwd	7
Fwd Head	8
Guest Stateroom Aft	9
Guest Head Aft	9
Companion Way	10
Electronics	10
Fly Bridge	11
Deck Equipment	11
Lazarette	12
Cockpit	13
Hull	14
Engine Room	15
Исключения	16
Отказ от ответственности	16
ФОТОГРАФИИ	17

КОНТАКТЫ	27
Контактная информация	27
Телефоны	27
Время работы	27
Адрес	27

ХАРАКТЕРИСТИКИ

Обзор

She has low hours on Caterpillar 3126's and fresh bottom paint. The success of any company depends on a number of factors. In the case of Wendon Manufacturing, the ultimate success is centered about the Founder and President, Mr. Al Owen. Wendon is now thirteen years old, as it was established in 1991 as a division of Weldco Beales Manufacturing Ltd. The initial plant at Canoe Cove in Sidney, B.C., manufactured one fiberglass yacht at a time. Many of the staff at Wendon have up to twenty-five years experience in the industry. The unparalleled quality of construction in all phases of the manufacturing process is a reflection of their skills. Every employee has a deep love and respect for boats, and each derives satisfaction from building something of beauty and function.

Основная информация

Тип судна: Моторная яхта

Подкатегория: Pilothouse

Модельный год: 2000

Год постройки: 2000

Страна: United States

Открытая палуба мостика: Да

Размеры

Длина общая: 48' 0" (14.63m)

Ширина: 14' 6" (4.42m)

Макс. осадка: 3' 9" (1.14m)

Скорость, вместимость и масса

Водоизмещение: 32000 Pounds

Вместимость воды: 160 Gallons

Вместимость сточного бака: 80 Gallons

Объем топливного бака: 500 Gallons

Размещение

Всего кают: 2

Всего коек: 1

Спальные места: 1

Всего ком. состава: 2

Койки экипажа: 1

Спальных мест экипажа: 1

Комм. состав экипажа: 1

Корпус и палуба

Материал корпуса: Fiberglass

Дизайнер корпуса: Wendon Mfg British
Columbia Can.

Информация о двигателе

Двигатели: 2

Производитель: Caterpillar

Модель: 3126

Тип двигателя: Inboard

Тип топлива: Diesel

ПОДРОБНОЕ ОПИСАНИЕ

OVERVIEW

She has low hours on Caterpillar 3126's and fresh bottom paint.

The success of any company depends on a number of factors. In the case of Wendon Manufacturing, the ultimate success is centered about the Founder and President, Mr. Al Owen.

Wendon is now thirteen years old, as it was established in 1991 as a division of Weldco Beales Manufacturing Ltd. The initial plant at Canoe Cove in Sidney, B.C., manufactured one fiberglass yacht at a time.

Many of the staff at Wendon have up to twenty-five years experience in the industry. The unparalleled quality of construction in all phases of the manufacturing process is a reflection of their skills. Every employee has a deep love and respect for boats, and each derives satisfaction from building something of beauty and function.

Salon

Lights and switches

Windows with blinds

Speakers (2)

Air conditioning control

Cabinet with Clarion M3170 AM/FM/ cassette stereo

Life Vests

TV antenna

A/B switch and phone jack

Sony 20" TV with integral VCR and remote

110V receptacles

Entry doors

Boarding ladder stored

Portable fire extinguisher

Galley/Laundry

3 burner electric Stove

GE microwave oven

Power vent with switch

Lights and switches

Sink with hot and cold pressure water

Storage cabinets and drawers

110V receptacles

2 refrigerator/freezer

Window outboard with blind

Counter top

Master Stateroom Fwd

Anchor rode locker with door

Windlass components

Chain and raw water wash down fittings

Bed with pillows

Storage and air conditioner exchanger beneath

Light and switches

Storage shelves outboard

Port and starboard

Air conditioner returns and vent

Port lights with curtains (2) with screens

Overhead hatch with screen

110V receptacles

Sole with carpet

Entry door with latch

Closet with light and access to hoses

Head entry door

Wesmar electric bow thruster beneath bed and sole

Fwd Head

Vacuflush head and control

Sink with hot and cold pressure water

110V receptacles with GFCI

Storage cabinets

Mirror

Port light with curtain and screen

Light and switches

Toilet paper rack

Towel bar

Power vent and switch (timer)

Shower stall with curtain

Head and control

Light and drain

Access to helm backsides overhead

Guest Stateroom Aft

Bed with pillows and spread

Air conditioner exchanger beneath bed

Light and switches

110V receptacles

Drawers

Closet with light and access to bilge

Shoes and windshield sunscreen

Air conditioner control

Return and vent

Port lights with curtains and screens (2)

Bedside tables with drawers

Mirror

Entry door with latch

Entry to head

Beneath closet

Bilge pump and float switch

Black water holding tank with pump out macerator and through hull fitting and forward shower drain pump (Whale Gumper 220)

Access to shower stall backsides and shower drain pump

Guest Head Aft

Entry door with latch

Mirror

Storage under sink

Vacuflush head

Storage cabinets

Towel racks

Drawers

Power vent and switch

Light and switches

110V receptacles with GFCI

Sink with hot and cold pressure water

Port light outboard with curtain

Shower stall with curtain

Light

Shower controls and drain

Companion Way

Lights and switch

Handrail

Steps

Entry doors

Sole with carpet

Electronics

GPS chart plotter

Radar

Video Sounder

Depth speed log indicator

VHF radio

Auto Pilot

Fly Bridge

Helm Wheel

Controls for engine and gears

Compass

Sole

Lights (4) with switch

Windshield gauges

Switches

Trim tab controls with angle indicators

Wesmar bow thruster control

Radar arch with lights

Navigation lights

Antennas

Radar Array and lighting arrestor

Spotlight controls

Helm seat

Deck drains

U shaped seating with storage beneath

Deck Equipment

Life ring

Rail

Stern light

Deck drains (4)

Safety light

Storage cabinets with canvas and horn air compressor

Fiberglass pulpit with roller

Anchor and chain

Raw water washdown fitting

Stainless steel bow rails with burgee staff

Windlass with foot switches

Cleats fwd (2) with chafe plates

Hatch cover

Boat hooks (2)

Vents

Superstructure with grab rails

Horns

Side doors

Navigation side lights

Spot light and hailer speaker

Windshield with wipers (3) and washers

Waste deck fittings (4)

Fuel fill deck fittings port and stbd

Water fill deck fittings port and stbd

Steps

Amidships cleats (4)

Hand rails

Lazzarette

Water tanks (2)

Shore power disconnect switch

Fire bucket

Deck drains

Engine room entry door

Storage shelves with fenders port/stbd

Portable fire extinguisher

Generator exhaust with check valve

Exhaust for main engines with mufflers

Bennett trim tab reservoir and pump lights and switch

Glendinning Cable master shore cord retractor and cord bin

Rudder logs

Stuffing boxes

Post and arms (2) each

Steering tie rod and hydraulic actuating cylinder

Rudder angle transducer

Auto pilot fluid pump and hose

Bilge pump and float switch with high water alarm

Bonding system

Deck drain piping

Cockpit

Lights overhead

Salon entry doors with windows

Lazzarette hatch cover

Deck drains (2)

Shower in cabinet with door

Steps – port /stbd

Storage cabinet's port/stbd with axe and docking lines

Transom door

Bell

Swim platform with swim ladder

Trim tabs (2) w/ 2 cylinders each

Transom door

Hull I.D. number

Dockside water connection

Vents

Cleats (2)

Shore power Glendenning Cable MasterShore cord retractor

Dockside TV and phone cable connections

Hull

Anchor rode locker drain

FLA registration numbers

Port Lights

Vents

Discharge through hulls

Rub rail

Gelcoat

Propellers (2)

Rudders (2)

Struts (2) with cutlass bearings

Propeller shafts (2) with zincs

Transducers (2)

Paddle wheels (2)

Shaft logs (2)

Strainers

Anti fouling bottom paint

Zincs

Engine Room

Main engines (2) and transmissions

550 hours with recent service performed

Exhaust hoses and connections

Fuel tanks (2)

Lights and switches

Entrance doorway

Raw water strainers (4)

Through hull fittings and seacock's

Fixed automatic fire extinguisher

Shaft logs and dripless stuffing boxes (2)

Batteries in boxes

Bonding system

Bilge pump with float switch

Air conditioner compressors (2)

Battery switches (2)

Air conditioner water pump

Through hull seacock and strainer

110V receptacle with cover

Battery charger

Blower with thermostat

Grey water holding tank with discharge macerator pump and through hull fitting with seacock

Racor fuel filters (3)

Transducers

Glendenning engine synchronizer unit

Groco Paragon 12V water pump and accumulator

Hynautic hydraulic engine control fluid reservoir and pressure gauges

Breaker panel

Head vacuum pumps and reservoirs (2)

Water heater with exchanger

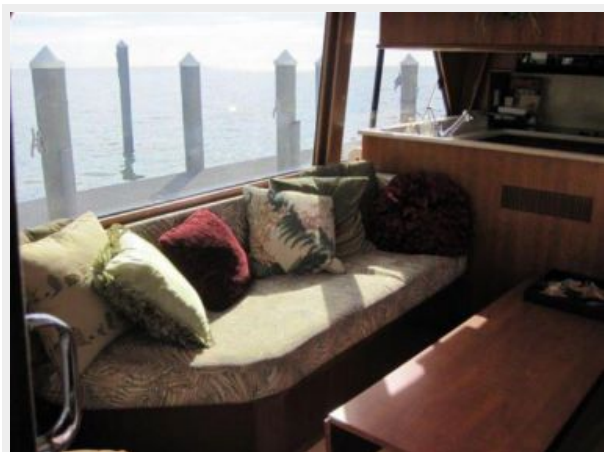
Исключения

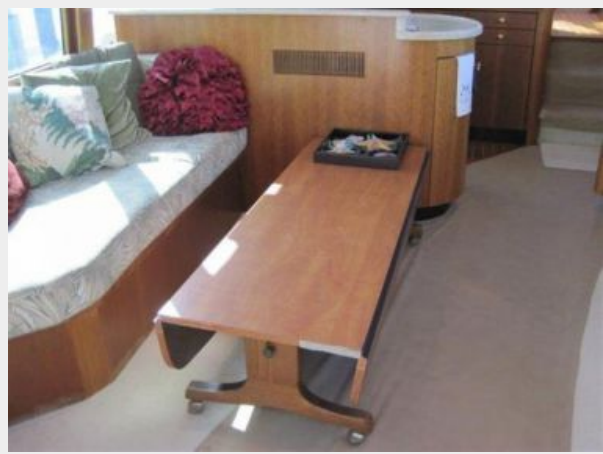
При продаже яхты исключаются личные вещи владельца.

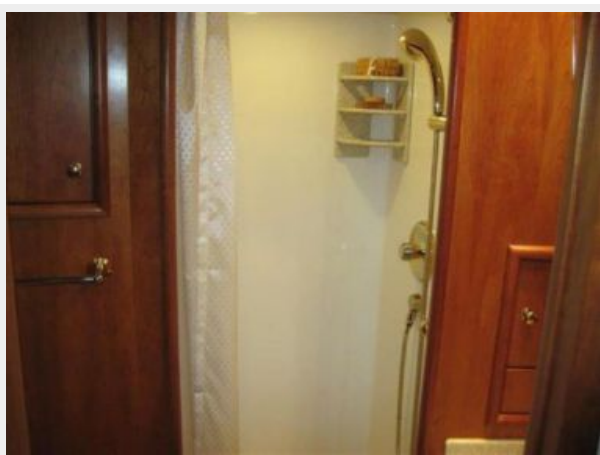
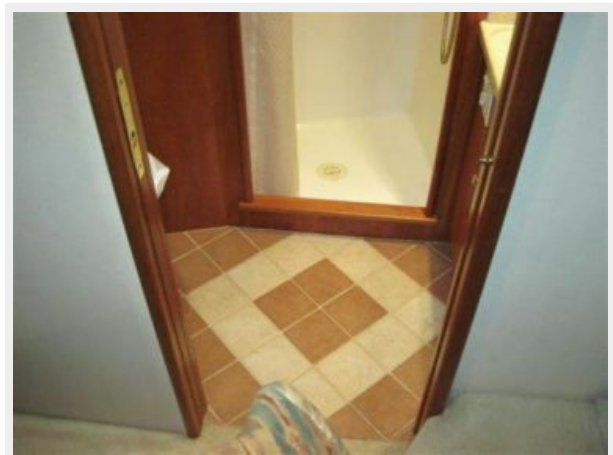
Отказ от ответственности

Компания предоставляет описание судна или яхты добросовестно, но не может гарантировать точность этой информации, а также не ручается за техническое состояние. Покупатель должен проинструктировать своих агентов или оценщиков исследовать представленную информацию более подробно, по собственному желанию. Продажа судна или яхты, изменение цены или снятие с продажи будет происходить без предварительного уведомления.

ФОТОГРАФИИ

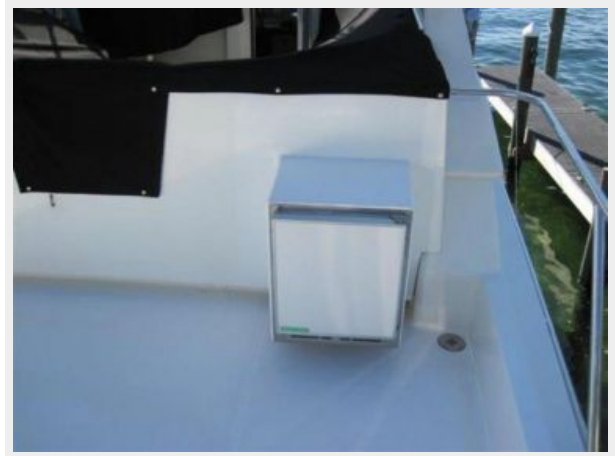




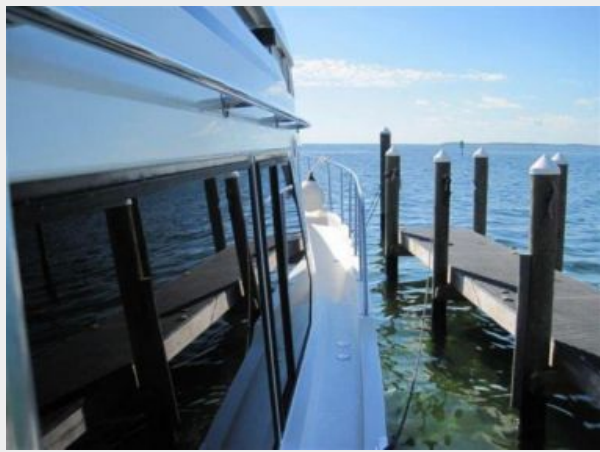
















КОНТАКТЫ

Андрей Шестаков (Andrey Shestakov) – ведущий яхтенный брокер отдела продаж яхт и судов компании Shestakov Yacht Sales Inc. Официальный представитель Shestakov Yacht Sales Inc. для русскоговорящих клиентов в центральном офисе компании в Майами/Форт Лодердейл/Флорида/США.

Контактная информация

Email: andrey@shestakovyachtsales.com

Web: shestakovyachtsales.com

Телефоны

Краснодарский край: **+7(918)465-66-44**

США, Майами, Флорида: **+1(954)274-4435**

Время работы

Понедельник – Суббота: **9:00 - 21:00**
EDT

Воскресенье: **Закрето**

Адрес



Harbour Towne Marina, 850 NE 3rd St,
STE 213, Dania, FL 33004