

CANYON LADY — HATTERAS



Builder: HATTERAS

Year Built: 1986

Model: Sport Fisherman

Price: PRICE ON APPLICATION

Location: United States

LOA: 45' 8" (13.92m)

Beam: 14' 6" (4.42m)

Min Draft: 4' 6" (1.37m)

Cruise Speed: 21 Kts. (24 MPH)

Max Speed: 26 Kts. (30 MPH)

Our experienced yacht broker, Andrey Shestakov, will help you choose and buy a yacht that best suits your needs **CANYON LADY — HATTERAS** from our catalogue. Presently, at Shestakov Yacht Sales Inc., we have a wide variety of yachts available on our sale's list. We also work in close contact with all the big yacht manufacturers from all over the world.

If you would like to buy a yacht **CANYON LADY — HATTERAS** or would like help answering any questions concerning purchasing, selling or chartering a yacht, please call **+1(954)274-4435**

TABLE OF CONTENTS

TABLE OF CONTENTS	2
SPECIFICATIONS	5
Overview	5
Basic Information	5
Dimensions	5
Speed, Capacities and Weight	5
Accommodations	6
Hull and Deck Information	6
Engine Information	6
DETAILED INFORMATION	7
Accommodations	7
Master Stateroom, Amidship Starboard	7
Guest Stateroom, Forward	7
Salon	7
Head	7
Galley, Amidship Port	8
Helm	8
Deck	8
Engine and Mechanical Equipment	8
Electrical System	9
Fishing Equipment	9
Exclusions	9
Salesman's Comments	9
Disclaimer	9
Exclusions	9
Disclaimer	10
PHOTOS	11
Profile 2	11

Profile 3	11
Profile 5	11
Profile 4	11
Master Stateroom 1	12
Profile 6	12
Master Stateroom 2	12
Master Stateroom 3	12
Guest Stateroom 1	13
Guest Stateroom 2	13
Guest Stateroom 3	13
Guest Stateroom 4	13
Salon 1	13
Salon 2	13
Salon 3	14
Salon 4	14
Head 1	14
Head 2	14
Galley 2	15
Galley 1	15
Galley 4	15
Galley 3	15
Helm / Electronics & Navigation 1	16
Electronics & Navigation 2	16
Electronics & Navigation 3	16
Electronics & Navigation 4	16
Deck 1	16
Deck 2	16
Deck 3	17
Deck 4	17

Deck 6	17
Deck 5	17
Deck 7	18
Deck 8	18
Deck 9	18
Deck 10	18
Deck 11	18
Deck 12	18
Deck 13	19
Deck 14	19
Deck 15	19
Engine & Mechanical Equipment	19
Rear Profile	19
Profile 7	19
CONTACTS	20
Contact details	20
Telephones	20
Office hours	20
Address	20

SPECIFICATIONS

Overview

"Canyon Lady" is well outfitted and ready for her new owner! ANOTHER MAJOR PRICE REDUCTION FALL 2013!!!! SHE IS PRICED TO SELL FAST! DON'T MISS OUT ON THIS OPPORTUNITY TO OWN A CLASSIC 45' HATTERAS!

Basic Information

Category: Sport Fisherman

Sub Category: Convertible

Model Year: 1986

Year Built: 1986

Country: United States

Fly Bridge: Yes

Dimensions

LOA: 45' 8" (13.92m)

LOD: 45' 8" (13.92m)

Beam: 14' 6" (4.42m)

Min Draft: 4' 6" (1.37m)

Speed, Capacities and Weight

Cruise Speed: 21 Kts. (24 MPH)

Max Speed: 26 Kts. (30 MPH)

Displacement: 39000 Pounds

Water Capacity: 165 Gallons

Fuel Capacity: 590 Gallons

Accommodations

Total Cabins: 2

Total Berths: 5

Sleeps: 5

Total Heads: 1

Crew Berths: 1

Crew Sleeps: 1

Crew Heads: 1

Hull and Deck Information

Hull Material: Fiberglass

Deck Material: Fiberglass

Hull Configuration: Semi Vee

Hull Color: White

Engine Information

Engines: 2

Manufacturer: Detroit Diesel

Model: 6V-92 TA

Engine Type: Inboard

Fuel Type: Diesel

DETAILED INFORMATION

Accommodations

Sleeps four owners and guests in two staterooms plus settee sleeps one for a total of five berths. One head and shower. Teak interior, Galley down with two staterooms and one head.

Master Stateroom, Amidship Starboard

- Carpeting
- Night stand
- Double berth
- Under bed storage
- Air conditioning / heater with controls
- Port light
- Hanging locker
- Under bed drawer
- Deck hatch w/ screen

Guest Stateroom, Forward

- V-berth
- Carpeting
- Under bed storage
- Anchor locker access
- Air conditioning / heater with controls
- (2) Port lights
- Hanging locker
- Under bed drawer
- Deck hatch w/ screen

Salon

- Teak Parquet Hi-Lo table
- Bar, sink and bottle storage
- Air conditioning / heater with controls
- L-shaped sofa w/ storage to starboard
- 12v Sony Stereo system / CD with Sirius Radio
- Miniblinds
- Tinted windows
- U-Line icemaker
- (2) Barrel chairs
- Canvas rug runner

Head

- Sink
- Port light

- Shower
- Vinyl flooring
- Holding tank, overboard, recirculating, electric head
- Wallpaper
- Exhaust fan
- Medicine cabinet

Galley, Amidship Port

- Sharp Microwave oven
- Hot Point refrigerator w/ freezer
- Galley Maid 3 burner stove w/ oven
- Pressure, dockside fresh water system
- Sink
- Carpeting
- Water heater
- Medicine cabinet

Helm

- Furuno radar
- Robertson Autopilot
- Northstar 800 Ioran
- Icom M-602 VHF radio
- Compass
- Furuno fish finder
- Datamarine offshore digital depth finder

Deck

- Transom door
- Anchor w/ lines
- Goode electric windlass
- (2) Pompanette helm seats
- Pressure, saltwater wash down system
- Spreader lights
- Navigation lights
- Bridge seating w/ storage
- Electric controlled, fixed searchlight w/ remote control

Engine and Mechanical Equipment

- Trim tabs
- Fire control system
- Raw water sea strainer
- Hydraulic wheel steering
- Engine temperature alarm
- (2) Bilge blowers
- Racor fuel filters
- Oil pressure alarm
- Engine fuel shut-off valve
- Acoustical, thermal insulation

- Bridge, tower engine controls
- Cruiseair reverse cycle air conditioner
- (3) Automatic, manual bilge pumps
- Automatic, manual, Halon fire extinguisher

Electrical System

- 12v DC electrical system
- Onan generator w/ 1580 hrs.
- 110v, 220v AC electrical system
- Automatic, manual battery charger
- (4) Batteries
- Battery parallel switch
- Dockside electrical cable

Fishing Equipment

- Fish box
- Rupp outriggers
- Tuna (full) tower
- 6-rod rocket launcher aft Bridge rail
- Cockpit sink
- (7) Rod holders
- Rupp center rigger
- Cockpit tackle locker

Exclusions

Owner's personal gear.

Salesman's Comments

"Canyon Lady" is well outfitted and ready for her new owner! ANOTHER MAJOR PRICE REDUCTION FALL 2013!!!! SHE IS PRICED TO SELL FAST! DON'T MISS OUT ON THIS OPPORTUNITY TO OWN A CLASSIC 45' HATTERAS!

Disclaimer

The Company offers the details of this vessel in good faith but cannot guarantee or warrant the accuracy of this information nor warrant the condition of the vessel. A buyer should instruct his agents, or his surveyors, to investigate such details as the buyer desires validated. This vessel is offered subject to prior sale, price change, or withdrawal without notice.

Exclusions

Owner's personal belongings.

Disclaimer

The Company offers the details of this vessel or yacht in good faith but cannot guarantee or warrant the accuracy of this information nor warrant the condition of the vessel. A buyer should instruct his representatives, agents, or his surveyors, to investigate such details as the buyer desires validated. This vessel or yacht is offered subject to prior sale, price change, or withdrawal without notice.

PHOTOS

Profile 2



Profile 3



Profile 5



Profile 4



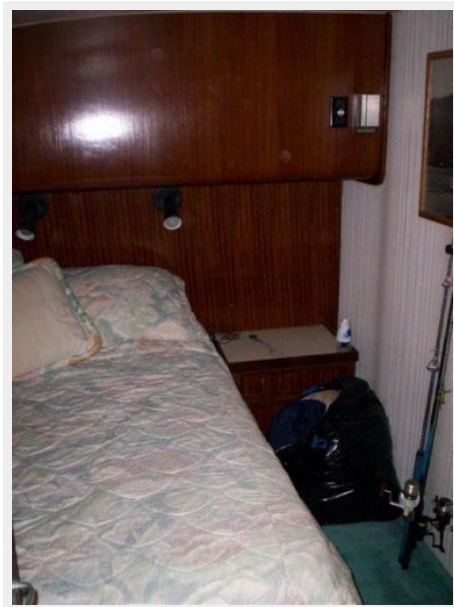
Profile 6



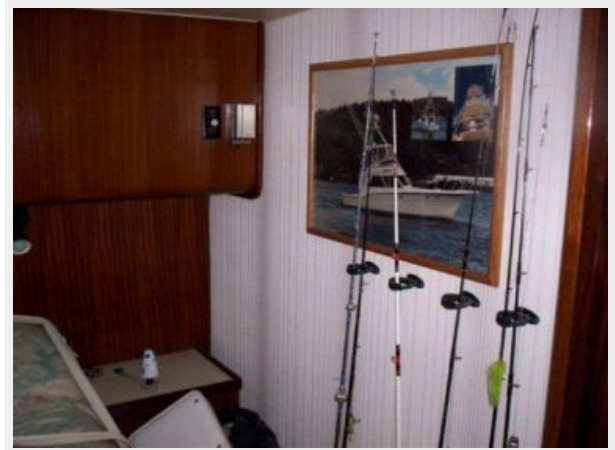
Master Stateroom 1



Master Stateroom 2



Master Stateroom 3



Guest Stateroom 1



Guest Stateroom 2



Guest Stateroom 3



Guest Stateroom 4



Salon 1



Salon 2



Salon 3



Salon 4



Head 1



Head 2



Galley 1



Galley 2



Galley 3



Galley 4



Helm / Electronics & Navigation 1



Electronics & Navigation 2



Electronics & Navigation 3



Electronics & Navigation 4



Deck 1



Deck 2



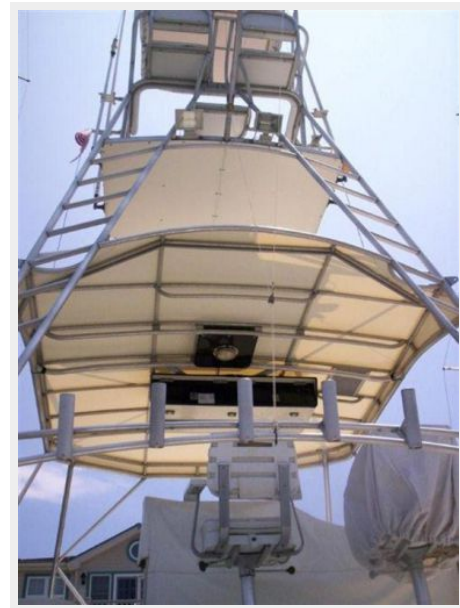
Deck 3



Deck 4



Deck 6



Deck 5



Deck 7



Deck 8



Deck 9



Deck 10



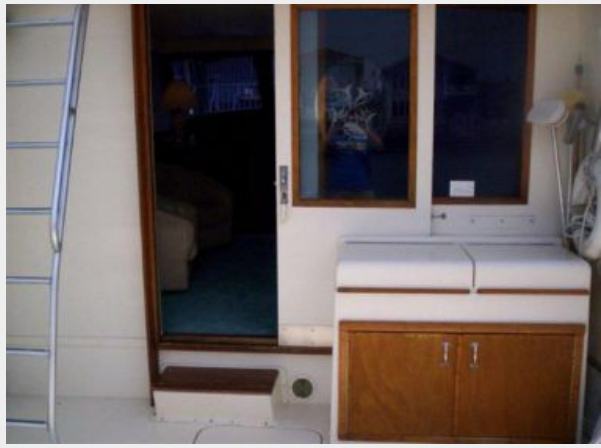
Deck 11



Deck 12



Deck 13



Deck 14



Deck 15



Engine & Mechanical Equipment



Rear Profile



Profile 7



CONTACTS

Andrey Shestakov, leading yacht broker of the sales department of Shestakov Yacht Sales Inc. Shestakov Yacht Sales Inc., the official representative of the Miami/Fort Lauderdale FL headquarters.

Contact details

Email: andrey@shestakovyachtsales.com

Web: shestakovyachtsales.com/en/

Telephones

USA: +1(954)274-4435

Office hours

Monday – Saturday: **9:00 - 21:00** EDT

Sunday: **closed**

Address



Harbour Towne Marina, 850 NE 3rd St,
STE 213, Dania, FL 33004