

## VICTORY CHIMES — GEORGE K. PHILLIPS CO.



**Судостроитель:** [George K. Phillips Co.](#)

**Год постройки:** 1900

**Модель:** Шхуна

**Цена:** ЦЕНА ЯХТЫ ПО ЗАПРОСУ

**Местонахождение:** United States

**Длина общая:** 132' 0" (40.23m)

**Ширина:** 23' 8" (7.21m)

**Мин. осадка:** 8' 6" (2.59m)

**Макс. осадка:** 18' 0" (5.49m)

**Крейс. скорость:** 5 Kts. (6 MPH)

**Макс. скорость:** 7 Kts. (8 MPH)

Купить Victory Chimes — George K. Phillips Co. а также выбрать подходящую вам яхту из нашего каталога яхт вам поможет опытный яхтенный брокер Андрей Шестаков. На сегодняшний день компания Shestakov Yacht Sales Inc. имеет большое количество яхт в собственном списке продаж, а также тесно сотрудничает со всеми крупными яхтенными производителями по всему миру. Для того чтобы купить яхту Victory Chimes — George K. Phillips Co. а также проконсультироваться по любому вопросу связанному с покупкой, продажей, чартером яхт позвоните по телефону **+7(918)465-66-44**.

# ОГЛАВЛЕНИЕ

ОГЛАВЛЕНИЕ	2
ХАРАКТЕРИСТИКИ	5
Основная информация	5
Размеры	5
Скорость, вместимость и масса	5
Размещение	5
Корпус и палуба	6
Информация о двигателе	6
ПОДРОБНОЕ ОПИСАНИЕ	7
Accommodation	7
Passenger Cabins	7
Captain's Quarters	7
Crew Quarters	8
Saloon	8
Galley	8
Deck & Hull	8
Sails and Rigging	9
Mechanical & Electrical Details	9
Electronics & Navigation	10
Comments	10
Исключения	11
Отказ от ответственности	11
ФОТОГРАФИИ	12
Standard Twin Bunk Cabin	12
Over Under Four Bunk Cabin	12
Over Under Four Bunk Cabin	12
Over Under Four Bunk Cabin Wash Basin	12
Queen Cabin Forward	13

Queen Cabin Aft	13
Queen Cabin Head	13
Commodores Guest Suite	13
Commodores Guest Suite Bookcase	14
Commodores Guest Suite Head	14
General Use Below Deck Head	14
General Use On Deck Head	14
Companionway to Captains Cabin	15
Captains Quarters Forward Bulkhead	15
Captains Quarters, Settee	15
Captains Quarters Port Side	15
Captains Quarters Chart Storage and Table	16
Main Companionway to Passenger Cabins	16
Main Companionway Foyer Looking Aft	16
Main Foyer Looking Aft	16
Forward Companionway, General Use Heads Either Side	17
Main Hall Looking Forward From Main Foyer	17
Forward Companionway From Saloon	17
Saloon Starboard Side	17
Galley Port Side Forward	18
Saloon Port Side	18
Galley Port Side Aft	18
Galley Sink	18
Galley Starboard Side Forward	19
Galley Starboard Side Aft	19
Port Side Deck Looking Forward	19
Starboard Side Deck Looking Forward	19
Sidedeck Port Side Forward	20
Port Side Forward Side Deck	20

---

Donkey Engine	20
Mid Deck Seating	20
Windlass	20
Emergency Bilge Pump and Engine	20
Helm	21
Electronics at Helm	21
Aft Bollard And Lazzarette Hatch	21
Forward Bollard	21
Profile at Anchor	21
Profile at Anchor	21
Profile Under Sail	22
Profile Under Sail	22
VICTORY CHIMES at recent haulout	22
Yawlboat	22
Historical Photo of 'Edwin and Maud'	23
Historical Photo of 'Edwin and Maud'	23
National Historic Landmark Plaque	23
"Being pushed by the Yawl Boat"	23
Layout	23
<b>КОНТАКТЫ</b>	<b>24</b>
Контактная информация	24
Телефоны	24
Время работы	24
Адрес	24

# ХАРАКТЕРИСТИКИ

## Основная информация

Тип судна: Шхуна

Модельный год: 1900

Год постройки: 1900

Страна: United States

## Размеры

Длина общая: 132' 0" (40.23m)

Длина палубы: 132' 0" (40.23m)

Ширина: 23' 8" (7.21m)

Мин. осадка: 8' 6" (2.59m)

Макс. осадка: 18' 0" (5.49m)

Трапы: 85' 5" (26.03m)

## Скорость, вместимость и масса

Крейс. скорость: 5 Kts. (6 MPH)

Макс. скорость: 7 Kts. (8 MPH)

Водоизмещение: 415490.6 Pounds

Вместимость воды: 3000 Gallons

Вместимость сточного бака: 1000 Gallons

Объем топливного бака: 450 Gallons

## Размещение

Всего кают: 21

Спальные места: 44

Всего ком. состава: 8

Каюта капитана: Да

Каюты экипажа: 9

Койки экипажа: 7

## Корпус и палуба

---

**Материал корпуса:** Wood

**Материал палубы:** Wood

**Цвет корпуса:** Hunter Green

**Дизайнер корпуса:** J.M.C. Moore

## Информация о двигателе

---

**Двигатели:** 1

**Производитель:** Cummins

**Модель:** 210hp on Yawlboat

**Тип двигателя:** Inboard

**Тип топлива:** Diesel

---

# ПОДРОБНОЕ ОПИСАНИЕ

---

## Accommodation

---

Fo'c'sle forward, followed by galley, large main saloon capable of seating 50, and passenger accommodation with one general use guest head for those cabins not having a head en-suite. Above deck, the forward deck house features two general use heads with sinks and two stall showers for use by the entire vessel. The Masters or Captain's quarters are located aft.

## Passenger Cabins

---

VICTORY CHIMES features 21 total passenger cabins providing accommodation for 44 adults. 20 cabins are below deck and 1 is located on deck.

- (15) Over/under 2 person cabins with sink, hot/cold water and portlight
- (1) Over/under 4 person cabin with sink, hot/cold water and portlight
- (1) Side by side 2 person cabin with sink, hot/cold water and portlight
- (4) Queen 2 person cabins with sink, hot/cold water, en-suite head, and portlight

## Captain's Quarters

---

Located aft and forward of the helm. It features a large private settee suitable for crew meetings with drop leaf table, fireplace/stove, desk, book cases, chart storage and abundant natural light. The sleeping quarters are separate with head, sink with hot/cold water and stall shower en-suite. There is also private access to the main corridor below deck.

- "L"-shaped cushioned settee
- Large mahogany drop leaf table
- (2) Arm chairs
- Built in mahogany drop front desk
- 8 day brass Chelsea ships bell clock
- Chelsea brass ships barometer
- (2) Waterford crystal decanters
- Brass ships cannon
- Brass front solid fuel fireplace/stove (circa: 1887)
- Brass antique coal scuttle
- Brass matchbox holder
- Mahogany fireplace mantle
- Nav-station w/hinged chart table and abundant chart storage
- (8) Brass lanterns of various shapes and sizes
- (2) Single berths with storage under
- Closet with drawers

- Full size stall shower
- Small refrigerator
- Teak paneling throughout
- Large overhead skylight box
- Submarine compass above captains bunk from WWII

---

## Crew Quarters

---

Located above and below deck in both the bow and stern of the schooner

- (5) Single berths in fo’c’sle accessed via forward deck hatch
- (2) Single over/under berth cabin port side of forward deck house
- (1) Single berth Mates cabin starboard side of forward deck house
- (1) Single berth Cooks cabin aft of passenger cabin below deck

---

## Saloon

---

- (3) Large dining tables
- Abundant seating (for 50) via settee’s and stools
- (5) Opening portlights
- Companionway to main deck
- Serving area
- Access to main corridor below deck to passenger cabins
- Brass hanging lamps
- 110v/220 lighting

---

## Galley

---

- Large capacity 110v/220v front and top loading cold plate refrigeration
- Diesel fired “French flat top” cast iron stove w/2 warming racks and 2 ovens
- Stainless countertop on “hot” side of galley
- Large double basin stainless sink
- Exhaust fan
- (2) Opening ports
- GE Microwave Oven
- Assorted pots, pans, dishes, plates, silverware, glasses and service ware

---

## Deck & Hull

---

VICTORY CHIMES is built as a flat bottomed centerboard schooner of large volume (LOA: 132’ / BEAM: 23’8” / DEPTH: 8’6”) Hull is constructed of double planked long leaf yellow pine 3” to 4”



thick on 8 ½” oak frames. A 4” thick hull ceiling, also of long leaf yellow pine, adds additional strength. Deck planking is also of long leaf yellow pine.

- Bow rebuilt (1993)
- Transom replaced (2005)
- Foredeck below windlass rebuilt (1997)
- Anchor windlass, original 1900, fully rebuilt and overhauled w/new bearings (2002)
- (1) 12,000 lb iron stock type anchor
- (1) 1,500 lb iron stock type anchor
- (1) 350 lb iron stock type anchor
- (2) 3 Shots (270') of 1 ½” ABS stud link anchor chain rode
- (64) PFD's located in deck boxes
- (3) Throwable liferings
- (1) Viking 20 man self inflating life raft with EPIRB
- (2) 35 man hard life rafts with EPIRB's
- (17) Fixed fire extinguishers
- (7) Halon fire extinguishers in aft lazarette
- (1) B-1 type portable fire extinguisher
- (7) B-2 type portable fire extinguishers
- 8' Old Town rowing skiff
- 12' Lapstrake pulling boat w/sailing rig on davits
- 13' Avon RIB rescue boat with 25hp Suzuki outboard engine

## Sails and Rigging

VICTORY CHIMES has the traditional “ram” schooner rig consisting of a standing jib, flying jib, staysail, foresail, mainsail, and spanker or mizzen. The heads of the fore, main, and spanker are supported by gaffs and the foots are laced to booms.

- Oregon Douglas fir keel-stepped foremast (replaced 1989)
- Oregon Douglas fir keel-stepped mainmast (replaced 1988, pulled and serviced 2013)
- Oregon Douglas fir keel-stepped mizzenmast (replaced 1976, new chain plates 2013)
- 8,700 Square feet of sail
- Nat Wilson, Oceanis cloth flying jib (1998)
- Nat Wilson, Oceanis cloth jib (1998)
- Nat Wilson, Oceanis cloth staysail (1998)
- Nat Wilson, Oceanis cloth foresail (1999)
- Nat Wilson, Oceanis cloth mainsail (1999)
- Nat Wilson, Oceanis cloth mizzensail (1998)
- Galvanized steel wire standing rigging, treated with boiled linseed oil
- Steel bowsprit (1965)

## Mechanical & Electrical Details

- 6hp 1906 Olds Seagear gasoline powered “donkey” engine for anchor windlass and sail raising windlass (overhauled 2001)
- 2 ½hp (circa 1900) Domestic gasoline powered pump engine for 6” Edson type diaphragm bilge pump
- Honda 2” gasoline powered fire pump / bilge pump engine (2007)
- 12.5kw Phasor generator with sound box (2008)
- 5kw Honda emergency generator
- (1) Out Back 35 Amp 32 Volt inverter/battery charger (2009)
- (1) Hart 20 Amp 32 Volt inverter/battery charger
- (1) Pro Mariner 25 Amp 32 Volt battery charger
- (1) Vantex 20 Amp 32 Volt battery charger
- (2) Banks 32 Volt / 8 Volt in series house batteries (2009)
- (1) 12 Volt emergency lighting battery
- (2) 12 Volt navigation equipment batteries
- (1) 12 Volt generator starting battery
- (2) 12 Volt spare batteries
- Electrical system and wiring (1989)
- (2) Rule 1400gph 32 Volt bilge pumps
- (2) Scott 1’ 32 Volt bilge pumps
- 6 kw Honda portable generator (2013)

---

## Electronics & Navigation

---

- Sailor type R VHF
- Standard Horizon Eclipse Plus VHF
- Garmin 3210 color chart plotter w/weather fax
- International Offshore depth sounder
- Furuno 1731 36 mile radar
- Furuno 1900 24 mile radar
- SITEX 955 hailer
- Cape Cod wind speed indicator
- Antique brass compass and binnacle

---

## Comments

---

VICTORY CHIMES, built as “EDWIN AND MAUD” being named for the two children of her first Captain, Robert E. Rigger, is the only surviving example of the Chesapeake Ram type schooner in existence today. She was optimized in her design for use on the mid Atlantic and Great Lakes where it was necessary for a schooner to fit through the shallow navigational canals which linked ports in larger and deeper bodies of water. Her original cargo consisted of sawn lumber, grain, soft coal and fertilizer, which she carried in and out of Chesapeake Bay until 1945 when she was

converted to carrying passengers. She worked the Bay until she was purchased by a syndicate who brought her to Maine in 1954 and re-named VICTORY CHIMES. VICTORY CHIMES operated as a successful charter business on the coast of Maine until 1984 when she was sold to a Minnesota banker who brought her to the Great Lakes. Shortly after, she was purchased by the owner of Domino's Pizza, Mr. Thomas Monaghan, and re-named "DOMINO EFFECT". Used by the company for employee incentive cruises, Mr. Monaghan invested large amounts of money repairing and restoring the schooner and can arguably be credited for saving her life. In 1989 she returned to the coast of Maine and subsequently in 1990, was purchased by her current owners, Capt. Kip Files and Capt. Paul DeGaeta who named her "VICTORY CHIMES" once again and returned her to the passenger trade. Honored by the State of Maine as "The premier schooner of the Maine sailing fleet" in 1991, by the United States National Parks Service as a "National Historic Landmark" in 1997 and minted on the State of Maine Quarter in 2003, she remains a successful and well kept "working" vessel steeped with important U.S. maritime history. VICTORY CHIMES presently holds a USCG Certificate of Inspection for 50 passengers and is diligently kept to, and above, the standards the USCG requires with annual inspections, etc... Detailed restorative data, as well as business data, is available upon request to well qualified prospects. Interested parties may wish to consult the vessels website: [www.victorychimes.com](http://www.victorychimes.com) or the National Park Service's National Historic Landmark Study for the vessel: [www.nps.gov/history/maritime/nhl/victory.htm](http://www.nps.gov/history/maritime/nhl/victory.htm)

---

## Исключения

При продаже яхты исключаются личные вещи владельца.

---

## Отказ от ответственности

Компания предоставляет описание судна или яхты добросовестно, но не может гарантировать точность этой информации, а также не ручается за техническое состояние. Покупатель должен проинструктировать своих агентов или оценщиков исследовать представленную информацию более подробно, по собственному желанию. Продажа судна или яхты, изменение цены или снятие с продажи будет происходить без предварительного уведомления.

# ФОТОГРАФИИ

**Standard Twin Bunk Cabin**



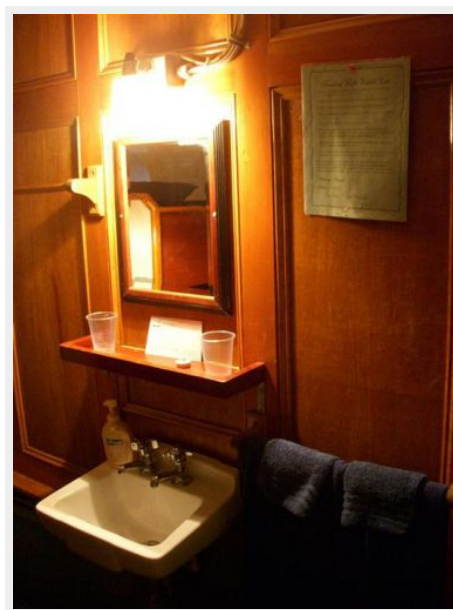
**Over Under Four Bunk Cabin**



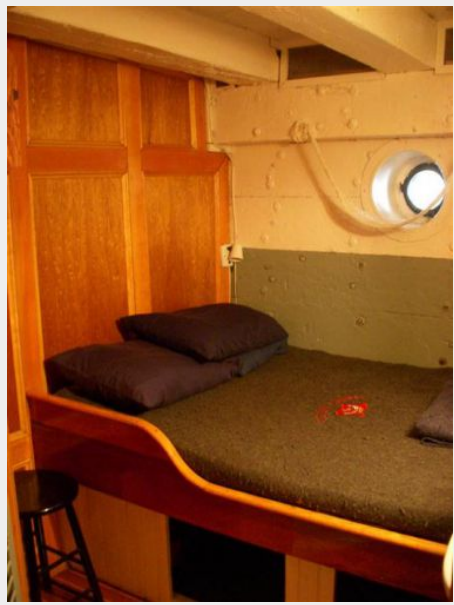
**Over Under Four Bunk Cabin**



**Over Under Four Bunk Cabin Wash Basin**



**Queen Cabin Forward**



**Queen Cabin Aft**



**Queen Cabin Head**



**Commodores Guest Suite**



**Commodores Guest Suite Bookcase**



**Commodores Guest Suite Head**



**General Use Below Deck Head**



**General Use On Deck Head**



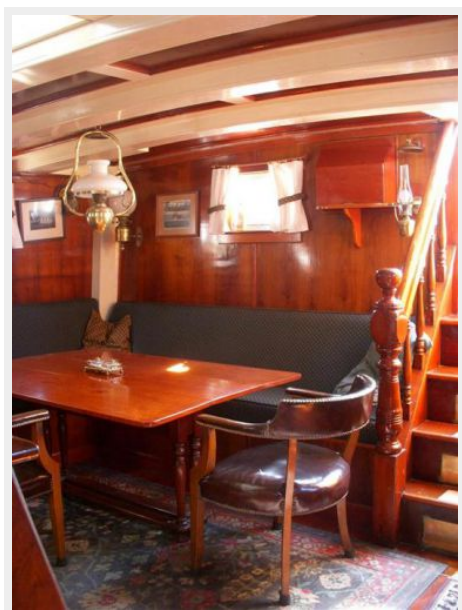
## Companionway to Captains Cabin



## Captains Quarters Forward Bulkhead



## Captains Quarters, Settee



## Captains Quarters Port Side



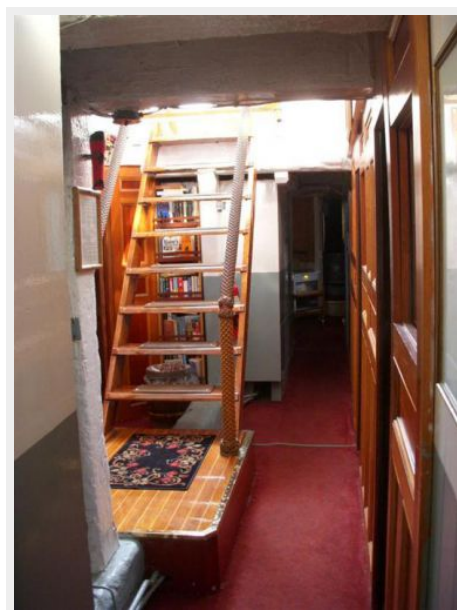
**Captains Quarters Chart Storage and Table**    **Main Companionway to Passenger Cabins**



**Main Companionway Foyer Looking Aft**



**Main Foyer Looking Aft**





**Main Hall Looking Forward From Main Foyer**



**Forward Companionway, General Use  
Heads Either Side**



**Forward Companionway From Saloon**



**Saloon Starboard Side**



**Saloon Port Side**



**Galley Port Side Forward**



**Galley Port Side Aft**



**Galley Sink**



**Galley Starboard Side Forward**



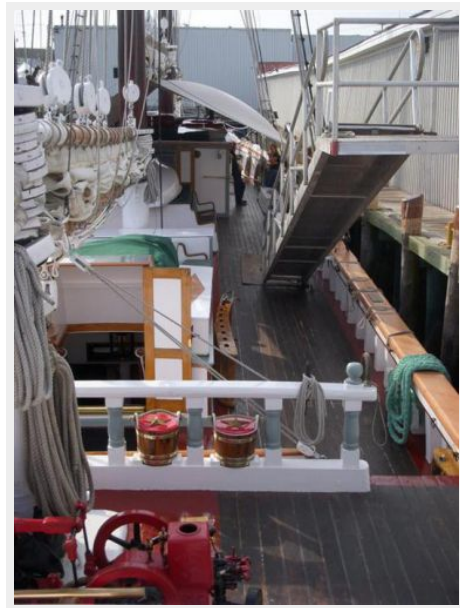
**Galley Starboard Side Aft**



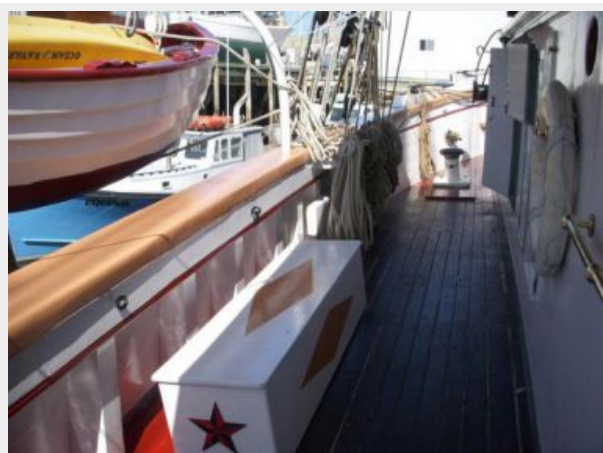
**Port Side Deck Looking Forward**



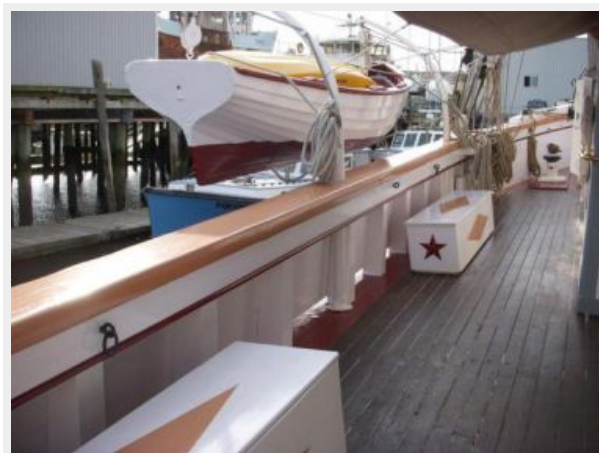
**Starboard Side Deck Looking Forward**



**Siddeck Port Side Forward**



**Port Side Forward Side Deck**



**Mid Deck Seating**



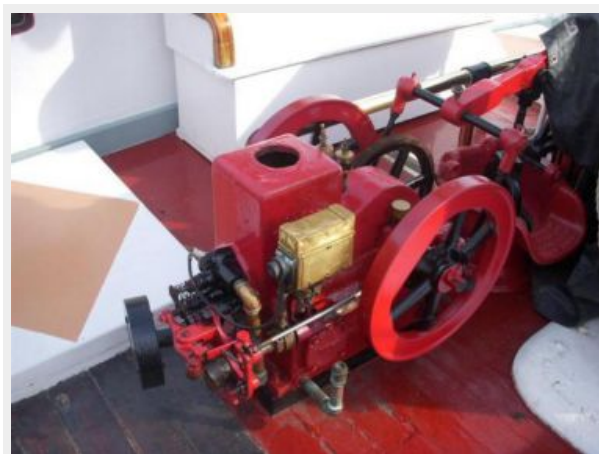
**Donkey Engine**



**Windlass**



**Emergency Bilge Pump and Engine**



**Helm**



**Electronics at Helm**



**Aft Bollard And Lazzarette Hatch**



**Forward Bollard**



**Profile at Anchor**



**Profile at Anchor**



### Profile Under Sail



### Profile Under Sail



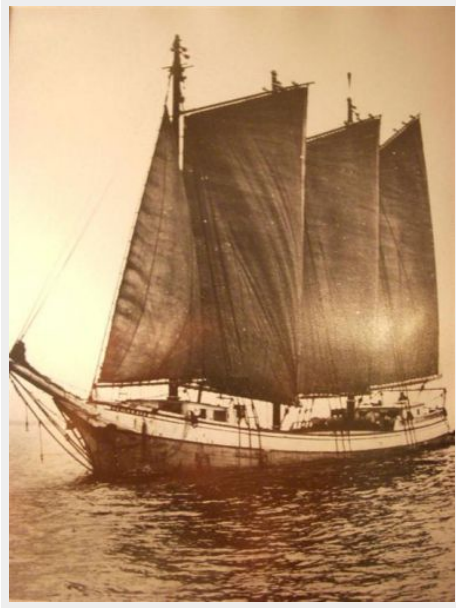
### VICTORY CHIMES at recent haulout



### Yawlboat



Historical Photo of 'Edwin and Maud'



Historical Photo of 'Edwin and Maud'



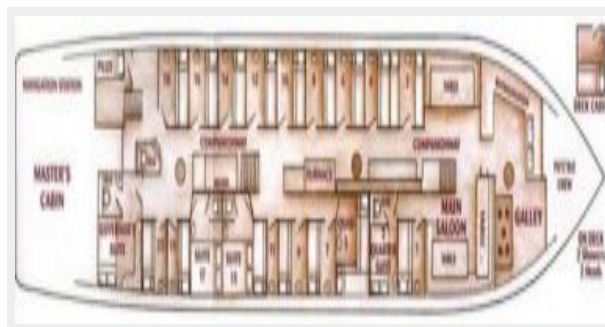
National Historic Landmark Plaque



"Being pushed by the Yawl Boat"



Layout



# КОНТАКТЫ

---

Андрей Шестаков (Andrey Shestakov) – ведущий яхтенный брокер отдела продаж яхт и судов компании Shestakov Yacht Sales Inc. Официальный представитель Shestakov Yacht Sales Inc. для русскоговорящих клиентов в центральном офисе компании в Майами/Форт Лодердейл/Флорида/США.

## Контактная информация

---

Email: [andrey@shestakovyachtsales.com](mailto:andrey@shestakovyachtsales.com)

Web: [shestakovyachtsales.com](http://shestakovyachtsales.com)

## Телефоны

---

Краснодарский край: **+7(918)465-66-44**

США, Майами, Флорида: **+1(954)274-4435**

## Время работы

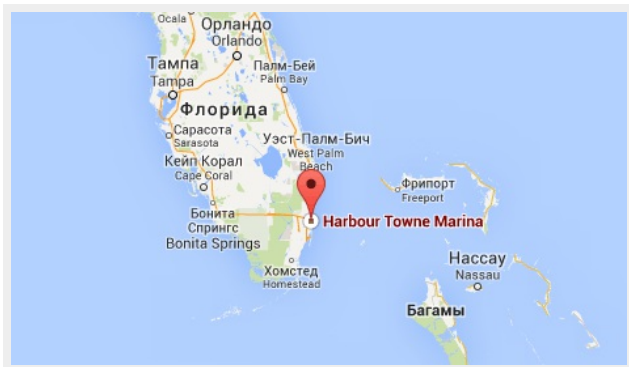
---

Понедельник – Суббота: **9:00 - 21:00**  
EDT

Воскресенье: **Закрито**

## Адрес

---



Harbour Towne Marina, 850 NE 3rd St,  
STE 213, Dania, FL 33004