

SUB-LI-MATE — CRUISERS



Builder: CRUISERS

Year Built: 2006

Model: Cruiser

Price: PRICE ON APPLICATION

Location: United States

LOA: 46' 0" (14.02m)

Beam: 14' 0" (4.27m)

Min Draft: 36' 7" (11.13m)

Our experienced yacht broker, Andrey Shestakov, will help you choose and buy a yacht that best suits your needs **Sub-Li-Mate — CRUISERS** from our catalogue. Presently, at Shestakov Yacht Sales Inc., we have a wide variety of yachts available on our sale's list. We also work in close contact with all the big yacht manufacturers from all over the world.

If you would like to buy a yacht **Sub-Li-Mate — CRUISERS** or would like help answering any questions concerning purchasing, selling or chartering a yacht, please call **+1(954)274-4435**

TABLE OF CONTENTS

TABLE OF CONTENTS	2
SPECIFICATIONS	3
Basic Information	3
Dimensions	3
Speed, Capacities and Weight	3
Hull and Deck Information	3
Engine Information	3
DETAILED INFORMATION	4
Accommodations	4
Salon	4
Galley	4
Master Stateroom	4
Forward Stateroom	4
Helm & Cockpit	4
Engine /Mechanical Equipment	5
Exclusions	5
Disclaimer	5
PHOTOS	6
CONTACTS	10
Contact details	10
Telephones	10
Office hours	10
Address	10

SPECIFICATIONS

Basic Information

Category: Cruiser

Sub Category: Express

Model Year: 2006

Year Built: 2006

Country: United States

Dimensions

LOA: 46' 0" (14.02m)

Beam: 14' 0" (4.27m)

Min Draft: 36' 7" (11.13m)

Clearance: 13' 2" (3.99m)

Speed, Capacities and Weight

Water Capacity: 79 Gallons

Holding Tank: 50 Gallons

Fuel Capacity: 400 Gallons

Hull and Deck Information

Hull Material: Fiberglass

Engine Information

Engines: 2

Manufacturer: Volvo

Engine Type: Inboard

Fuel Type: Gas

DETAILED INFORMATION

Accommodations

The 460 features a highly functional layout with maximized living space, impressive performance and luxurious amenities. Every minute spent aboard this wonderful vessel is first class. Casual elegance envelops you whether embarking on your destination of choice or relaxing peacefully dockside. This boat belongs with someone who stands away from the crowd and appreciates high performance and high style. Women love this boat, men are envious of it.

Salon

The comfortable midcabin salon with ample head room does double duty as dining and lounging space.

Galley

Coffee maker Electric
refrigerator/freezer

Hot water system Microwave/convection oven 3 burner
electric stove

Master Stateroom

Features full standing headroom and walk-around queen size island berth.

Forward Stateroom

The guest quarters are found in the forward stateroom. Perpendicular berths combined with a unique slide out system allow for a single or double upper bunk and a single lower bunk. Ample storage for personal belongings in the guest quarters.

Helm & Cockpit

The air conditioned helm with a panoramic view features a distinguished captain's chair with bolster and an adjacent crescent lounge companion seat.

Automatic fire extinguishing system Cockpit carpet Cockpit
icemaker/refrigerator Cockpit table and sunlounge Electric

Spotlight Trim tabs Windlass
Anchor with rode Double helm

engine hatch

seat

Engine /Mechanical Equipment

Accessed by hydraulic engine hatch and down a removable ladder which makes routine checks and maintenance a much simpler task when working around twin engines. Regular maintenance and upkeep has kept this compartment in excellent working order.

Exclusions

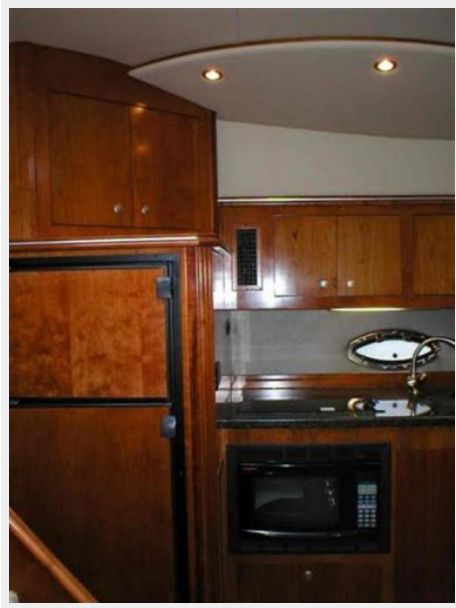
Owner's personal belongings.

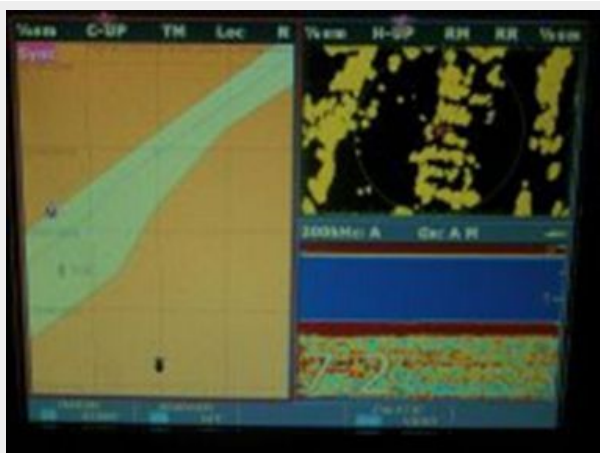
Disclaimer

The Company offers the details of this vessel or yacht in good faith but cannot guarantee or warrant the accuracy of this information nor warrant the condition of the vessel. A buyer should instruct his representatives, agents, or his surveyors, to investigate such details as the buyer desires validated. This vessel or yacht is offered subject to prior sale, price change, or withdrawal without notice.

PHOTOS









CONTACTS

Andrey Shestakov, leading yacht broker of the sales department of Shestakov Yacht Sales Inc. Shestakov Yacht Sales Inc., the official representative of the Miami/Fort Lauderdale FL headquarters.

Contact details

Email: andrey@shestakovyachtsales.com

Web: shestakovyachtsales.com/en/

Telephones

USA: +1(954)274-4435

Office hours

Monday – Saturday: **9:00 - 21:00** EDT

Sunday: **closed**

Address



Harbour Towne Marina, 850 NE 3rd St,
STE 213, Dania, FL 33004