

SWEET TUNA — HATTERAS



Builder: HATTERAS

Year Built: 2008

Model: Sport Fisherman

Price: PRICE ON APPLICATION

Location: United States

LOA: 77' 0" (23.47m)

Beam: 22' 0" (6.71m)

Min Draft: 5' 3" (1.60m)

Max Draft: 5' 3" (1.60m)

Cruise Speed: 28 Kts. (32 MPH)

Max Speed: 33 Kts. (38 MPH)

Our experienced yacht broker, Andrey Shestakov, will help you choose and buy a yacht that best suits your needs **Sweet Tuna — HATTERAS** from our catalogue. Presently, at Shestakov Yacht Sales Inc., we have a wide variety of yachts available on our sale's list. We also work in close contact with all the big yacht manufacturers from all over the world.

If you would like to buy a yacht **Sweet Tuna — HATTERAS** or would like help answering any questions concerning purchasing, selling or chartering a yacht, please call **+1(954)274-4435**

TABLE OF CONTENTS

TABLE OF CONTENTS	2
SPECIFICATIONS	4
Overview	4
Basic Information	5
Dimensions	5
Speed, Capacities and Weight	5
Accommodations	6
Hull and Deck Information	6
Engine Information	6
DETAILED INFORMATION	7
Vessel Walkthrough	7
Cockpit	8
Day Head (Salon)	9
Salon	10
Galley	11
Walk in Pantry - Attic	12
Lower Companionway	12
Laundry Room	12
Master Stateroom	13
Master Office/Study	13
Master Head	14
VIP Stateroom	14
VIP Head	15
Bow Guest Stateroom	15
Starboard Guest Stateroom	16
Guest Head Starboard	17
Enclosed Flybridge	17
Electronics and Navigational Equipment	18

Engine /Mechanical Equipment	19
Electrical System	20
Tower	21
Hull and Forward Deck	22
Tenders	22
Features and Upgrades	23
Exclusions	23
Summary	24
Exclusions	24
Disclaimer	24
PHOTOS	25
CONTACTS	33
Contact details	33
Telephones	33
Office hours	33
Address	33

SPECIFICATIONS

Overview

Unique and custom designed yacht that will not match any other 77CV Hatteras built to date. All natural teak cockpit, a clear transom live well with LED lighting, misters in A/C vents located in overhang, mezzanine seating and large 65" fish boxes in deck and ice chippers to name a few. The entrance pneumatic sliding door opens displaying mahogany wood plank flooring showcasing a very elegant and spacious Salon and Galley. The Salon features a custom AJ Originals mahogany and glass coffee table with custom end tables housing a wine cooler. As you enter, there is a day head to port and a cherry wood spiral staircase leading to the Flybridge. The mahogany plank floors extend through the Galley and bar seating area. The Galley is equipped with upgraded appliances, upgraded raised panel satin cherry wood and a 50" HD plasma TV with Omni directional sound giving you a warm and inviting feeling. Enter downstairs to a custom Master Suite with unique features unlike that of an ordinary 77CV. Oversized portholes with 3" tamboured mahogany accents allow extra sunlight into the room where you will find a large bed with a California King Sleep number mattress with headboard. A day bed lies in front of a huge cedar lined walk in closet with custom built drawers and an access entrance to the engine room. To port, there is a custom, beautifully decorated master head with an abundance of upgrades and storage. A private study, complete with refrigerator/freezer and internet and telephone allows for work at your leisure. Forward port is **another** Master Suite with a large bed with a California King Sleep number mattress and mahogany accents. Access to the head is forward with a private entrance ensuite, showcasing raised panel satin cherry wood work and marble countertops with a fully enclosed shower. Forward to the bow where one guest stateroom would be, are crew accommodations or guest accommodations. The space has been separated into two private cabins - one has Captain's quarters and one for the mate, offering plenty of storage in each cabin, including storage in the shared head. The head is accessed through the companionway and can be closed off by a hidden sliding door. Appointed in raised panel satin cherry wood work including nightstands, cedar lined overhead lockers and built in dressers. The enclosed Flybridge, accessible through the Salon or Cockpit by spiral staircase, offers custom mahogany wood flooring and spectacular views. Electronics are plenty, with upgrades and custom features making this Flybridge a captain's playground. Underwater cameras, night vision, large VEI screens, just to name a few, to navigate through waters day or night. A rear docking station and stainless steel ladder are located on the outside of the Flybridge. This 77CV Hatteras was a total custom build and well thought out by an experienced yachtsman and captain both with a sharp eye for interior décor and classy color choices. If you desire a sportfish to cruise like a large motor yacht and have the fishability of a tournament boat, this is the yacht for you. If you prefer to cruise in style and comfort and fish either part time or fish hardcore tournaments, the 77CV is a proven tournament winner! This yacht is one of the finest choices an owner can make in choosing a luxury vessel with the ability to catch fish and play the tournaments at the same time!

Basic Information

Category: Sport Fisherman

Sub Category: Convertible

Model Year: 2009

Year Built: 2008

Country: United States

Vessel Top: Enclosed Pilothouse

Fly Bridge: Yes

Cockpit: Yes

Dimensions

LOA: 77' 0" (23.47m)

Beam: 22' 0" (6.71m)

Min Draft: 5' 3" (1.60m)

Max Draft: 5' 3" (1.60m)

MFG Length: 77' 0" (23.47m)

Speed, Capacities and Weight

Cruise Speed: 28 Kts. (32 MPH)

Cruise Speed RPM: 2100 Kts.

Cruise Speed Range: 2500

Max Speed: 33 Kts. (38 MPH)

Max Speed RPM: 2450 Kts.

Displacement: 175000 Pounds

Gross Tonnage: 175000 Pounds

Water Capacity: 380 Gallons

Holding Tank: 200 Gallons

Fuel Capacity: 3000 Gallons

Accommodations

Total Cabins: 4	Total Berths: 4
Sleeps: 7	Total Heads: 4
Captain Cabin: True	Crew Cabin: 2
Crew Berths: 2	Crew Sleeps: 2
Crew Heads: 1	

Hull and Deck Information

Hull Material: Fiberglass	Deck Material: Fiberglass Sandwich
Hull Configuration: Modified V-Hull	Hull Color: Flag Blue
Hull Finish: Fiberglass	Hull Designer: Hatteras Yachts
Exterior Designer: Hatteras Yachts	Interior Designer: Hatteras Design Team

Engine Information

Engines: 2	Manufacturer: MTU
Model: 16V2000 M93 World Engine	Engine Type: Inboard
Fuel Type: Diesel	

DETAILED INFORMATION

Vessel Walkthrough

Unique and creative custom designed yacht that will not match any other 77 Hatteras built to date. Every option upgraded and spaces redesigned with additions not found in most Hatteras yachts; **definitely not to be missed**. This 77CV was in planning for 12 months, then 18 months to build awaiting the resin infusion process for the hull. Resin infusion saves over 10,000 pounds of weight but yields a stronger hull than the traditional layup method. Her experienced owners and captain built the finest sportfish with no expense or option spared!

An all-natural teak cockpit invites even the most discriminating fisherman. The clear transom live well with LED lighting, over-stuffed mezzanine seat cushions, misters in A/C vents located in the overhang and large 65" fish boxes in deck and ice chippers are just a few of the upgrades you will see. Full color TV for catching up on news and weather and upgraded navigation electronics are displayed in the cockpit for up to date data on favorite fishing spots.

The entrance pneumatic sliding door opens displaying mahogany wood floors and a very elegant and spacious Salon and Galley. The overhead ceiling, designed with extra height, is mirrored and takes center stage as you enter. An L-shaped custom overstuffed, down-filled sofa covered in soft elegant material with storage underneath and custom AJ Originals mahogany and glass coffee table with custom end tables housing a wine cooler for both red and white selections accent the sofa and invite you in. There is a day head to port just as you enter and a cherry wood spiral staircase leading to the Flybridge just forward the head. Mahogany plank flooring extends through to the Galley and bar seating area. The Galley is equipped with appliances with European door pulls, complemented by raised panel satin cherry wood and a 50" HD plasma TV giving this Galley a warm and inviting feeling. The interior wood panels on "Sweet Tuna" were a must for that particular owner wanting the best finish possible pushing Hatteras to construct a work of art with this elaborate custom wood interior. From the mahogany wood floors to the very custom wood raised panels throughout, you will not find a finer constructed sportfish on the waters today!

Just forward the Galley before the companionway down, are two very large storage attics. The port side attic has two freezers, AV equipment and plenty of room to provision for those long trips. Starboard attic offers storage space with amtico flooring and houses the audio with a large storage Kaleidoscope. Both attics are fully air conditioned.

Entering down the lower companionway, detailed with 3" tamboured satin cherry wood on the walls, you find the Master Stateroom aft. This custom designed stateroom has unique features unlike that of an ordinary 77CV. The two custom oversized portholes both port and starboard with satin cherry tamboured wood accenting the walls allow extra light into the room. To port, a settee sits in front of a large cedar lined walk in closet with custom built drawers and shelving. Forward the settee and up one step is a private office/study equipped with Wi-Fi, telephone and internet, a small counter space with fridge/freezer underneath with overhead cabinets done

in raised panel satin cherry wood.

Forward through the companionway, to the port side of the vessel, is *another* master suite. The California King Sleep by Number fully walk around berth with custom spread and matching pillows compliment the room. Private ensuite head with raised panel satin cherry door to full linen closet with Plexiglas shower enclosure.

Forward to the bow where one guest stateroom would be, are crew accommodations or guest accommodations. The space has been separated into two private cabins – one as Captain's quarters and one for the mate, appointed in raised panel satin cherry wood including nightstands, cedar lined overhead lockers and built-in dressers. They share a head accessed via the companionway. There is plenty of storage in each cabin and if an owner desires, the forward stateroom could be used as a large bunk room with the Captain in the starboard bunk room.

The enclosed Flybridge is accessed via spiral staircase through either the Salon or cockpit where you will find mahogany wood flooring and spectacular views. Electronics are plenty; upgrades and custom features make this Flybridge a Captain's playground with underwater cameras, large VEL screens and everything to navigate through waters day or night. A rear docking station and stainless steel ladder are located on the outside of the Flybridge.

On the foredeck you will find plenty of space that holds a Hewes flats boat lifted easily by a 2500 crane tucked neatly away from view. Both are color matched to the boat and well secured.

This 77CV Hatteras is amazing! You must see this to truly feel the elegance and beauty of her well designed and thought out layout.

Cockpit

Molded 192 sq. ft. custom natural teak deck with 25' feet of mezzanine seating. Fishboxes, ice maker, additional rod holders and see thru transom live well make this sportfish ready and equipped to win the ultimate prize money in any tournament! This cockpit is like fishing from a Pier!

- Molded 192 sq ft. cockpit (simply huge)
- Additional 25' of mezzanine seating
- Scuppers - cockpit quick drains
- Polished anodized aluminum ladder to Flybridge with acrylic steps
- Transom door with lift up transom gate
- 10 cubic ft. starboard bait freezer **UPGRADE**
- (3) 20 gallon storage tubs - bait trays **UPGRADE**
- (2) 65" fish boxes with macerator flush in deck with gas hinges - with mascerators **UPGRADE**
- Storage in steps to deckhouse with instep chill box "Refrigerated" **UPGRADE**
- Fiberglass cockpit boarding step with

UPGRADE

- (2) retractable Glendinning shore cords with remote - twin "100 Amp" **UPGRADE**
- Seawater and freshwater washdown outlets
- Full glass sliding pneumatic glass door **UPGRADE**
- Seat hinged for access to engine compartment
- Telephone/CATV inlets
- (4) Polished stainless steel rod holders with 2 additional 30 degree holders on aft coaming board **UPGRADE**
- Custom seating with cushions across upper mezzanine - Sunbrella
- Stainless steel transom hawsers
- Audio system control, LCD keypad and speakers, TV, sounder, radar, etc. **UPGRADE**
- Shore water connections with pressure reducing valve port and starboard
- (2) tackle drawers with perforated stainless steel bottom covered with cabinet door
- (6) Pompanette wing board rod holders port and starboard **UPGRADE**
- Large Bluewater fighting chair with offset pedestal custom by owner **UPGRADE**
- High gloss custom teak transom **UPGRADE (75K option)**
- storage
- DC overhead lights under Flybridge overhang
- A/C in overhang with blowers **UPGRADE**
- Misters in A/C vents located in cockpit overhang **UPGRADE**
- Cockpit coaming lights
- Lift up coaming gate **UPGRADE**
- Transom fishbox with recirculating live well **UPGRADE**
- Glass front live well with LED lighting **UPGRADE**
- Eskimo chipped ice machine in cockpit **UPGRADE**
- Additional vertical tackle center port side **UPGRADE**
- Teak natural finish mezzanine deck **UPGRADE**
- Teak natural finish cockpit sole **UPGRADE**
- In deck port side fish box with live well **UPGRADE**
- Portside mini drop out clutch and throttle wing control station **UPGRADE**
- Plumbing and electrical for second optional eskimo ice maker on port side **UPGRADE**
- Safety comfort handrail **UPGRADE**
- Full A/C, color screen black box for A/C and electronics viewing **UPGRADE**

Day Head (Salon)

Beautiful, custom decor and conveniently located immediately portside of the entrance to the Salon; a luxury that is valued when fishing not having to walk to the lower decks through the Salon.

- Plexi mirror ceiling

- Mahogany flooring
- Custom wallcovering
- Stone countertop with Kohler porcelain under mount sink
- Headhunter freshwater toilet
- Plexiglas mirror around upper cabinet
- Hardwood base boards
- A/C and ventilation fan **UPGRADE** (no other 77CV has this upgrade)
- Decorative mirror over sink
- Swinging door to day head
- Towel bar
- 120V A/C air freshener blower
- AC and DC light fixtures
- AC duplex outlet
- DC low voltage lights under tow kicks
- Hand selected marble **UPGRADE**

Salon

A pneumatic sliding door from the cockpit opens to this custom decorated Salon fully equipped with hidden wine cooler in the corner table, a convenient day head, upgraded entertainment center, custom carpeting, an extra high mirrored center ceiling for added room, all make this a very comfortable place to entertain or just relax. Done in warm earth tones with African Mahogany flooring, imported countertops, and Satin cherry wood, all can be adored by the warmth of the sunsets glowing through the large windows on port and starboard sides of the hull.

- Raised custom paneling throughout **UPGRADE**
- Custom carpeting **UPGRADE**
- Custom L-shaped sectional lounge with rod storage
- Removable upholstered headliner
- Satin cherry finished wood bulkheads
- Fluted wood valances with silhouette blinds
- Fixed frameless windows with tinted safety glass
- Whirlpool icemaker
- Telephone outlet
- Custom throw pillows
- Day head to port
- A/C disbursed through fluted valances
- Surround sound speakers
- Carbon monoxide detector
- Entertainment center with 50" HD plasma TV with
- AC & DC light fixtures
- AC dimmable lights
- AC duplex outlets
- Electric panels
- Stairwell to bridge
- Custom end table with wine cooler **UPGRADE**
- Smoke detector
- Ice maker **UPGRADE**
- Raised panel cherry veneer interior side of Salon and Flybridge doors **UPGRADE**
- Extra overhead height in Galley and Salon ceiling **UPGRADE**
- Custom AJ Originals mahogany high gloss beveled glass cocktail table **UPGRADE**
- Mahogany entry flooring

Omni directions antenna, AM/FM surround sound stereo receiver with DVD/CD player behind doors and one touch remote control **UPGRADE**

from cockpit **UPGRADE**

- Polished stainless steel threshold pneumatic door **UPGRADE**
- Twin 50" & 46" plasma TV's
- Platinum AV upgrade (audio interiors) (**150K option**) with full media center with Kaleidoscope **UPGRADE**

Galley

Spacious and open upgraded and fully equipped Galley done in raised satin cherry raised panel woodwork, beautiful imported granite counter tops, table settee and backsplash. Mahogany plank flooring throughout. Upgraded appliances done in satin cherry woodwork. Full size refrigerator with two Subzero refrigerator drawers underneath. 46" plasma TV mounted over imported granite table. Storage cabinet under table for additional space. Leather seating on dinette settee makes this a very comfortable and relaxing area to dine.

- Paykel custom refrigerator/freezer with European door pulls **UPGRADE**
- Microwave/convection oven
- One half HP continuous garbage disposal with cherry fascia front **UPGRADE**
- Paykel custom dishwasher **UPGRADE**
- Drawers in Galley upper cabinets behind doors
- Complete full custom raised panel doors throughout **UPGRADE**
- (2) Additional bar stools mounted on Salon side of Galley bar (total 5) **UPGRADE**
- Mahogany plank flooring **UPGRADE**
- Full size Whirlpool oven installed below cook top **UPGRADE**
- Imported hand picked granite Kozmus countertop with Ogee Edge **UPGRADE**
- AC & DC light fixtures
- AC dimmable lights
- AC duplex outlets
- Custom throw pillows in settee
- Telephone outlet
- A/C disbursed through fluted valances port and starboard
- Fluted wood valances with silhouette blinds
- Fixed frameless windows with dark tinted glass
- Central vacuum outlet
- Removable upholstered headliner
- Additional storage with Lazy Susan installed **UPGRADE**
- Additional small storage locker over top of dinette **UPGRADE**
- Satin nickel faucets and stainless steel sink

- Subzero drawer freezer in port attic **UPGRADE**

Walk in Pantry - Attic

PORT

- AC duplex outlet
- DC fixtures
- Amtico flooring
- (2) Subzero freezer drawers
- Electrical panels
- Extra large 150 sq. ft. of storage space
- Fully air conditioned

STARBOARD

- AC duplex outlet
- DC fixtures
- Central vacuum unit
- Audio equipment
- Fully air conditioned
- Amtico flooring
- Kaleidoscope

Lower Companionway

- Carpeting
- DC light fixtures
- Central vacuum outlet
- Steps to Salon
- Access hatch to mechanical room
- Custom layout and design **UPGRADE**
- Tamboured 3" solid wood cherry paneling throughout **UPGRADE**

- Removable upholstered headliner
- Satin cherry tamboured 3" paneling
- Access hatches to all bilges
- Custom raised panel satin cherry wood doors to Master Stateroom and guest rooms **UPGRADE**
- Small laundry room with stackable Whirlpool washer/dryer **UPGRADE**
- Overhead custom rod storage **UPGRADE**

Laundry Room

A full, oversized walk in laundry center enclosed by a raised panel door and conveniently located in the lower companionway. This is a major upgrade from other 77CV's on the market as the laundry centers are located in the hallway thus creating a flow block and leaving laundry laying outside in the hall. A completely redesigned floor plan and moving walls on this vessel made this possible.

Master Stateroom

This Master Stateroom was well thought out in great detail by the original owner. It features a very large custom, cedar lined walk-in closet, special ordered large portholes on both port and starboard hull sides enhanced by the tamboured cherry wood design, personal study/office with refrigerator/freezer under a small counter area with overhead storage, settee and custom decor. This Master Suite offers much more than just a place to relax!

- Carpeting
- Removable upholstered headliner
- Finished satin cherry bulkhead
- California King Sleep by Number mattress **UPGRADE**
- Custom throw pillows and shams
- Custom spread and linens
- Upholstered berth base
- Full length mirror in closet
- Private ensuite head
- Carbon monoxide detector
- 24" U-line refrigerator/freezer in study under countertop **UPGRADE**
- Cedar lined walk in closet with extra shelving designed for shoes **UPGRADE**
- Custom headboard
- Nightstands port and starboard
- Custom raised headliner for more head room **UPGRADE**
- Dressers port and starboard with drawers
- Fixtures and handles in fluted polished chrome
- AC & DC light fixtures
- AC dimmable lights
- AC duplex outlets
- 37" plasma TV with MATV outlet **UPGRADE**
- AM/FM audio access with local DVD/CD changer and one touch master universal remote **UPGRADE**
- Stereo speakers
- Telephone outlet
- DC low voltage lights under berth
- SMX HAVC compartment controlled
- Settee with underneath storage
- Hullside panels around portlights finished in 3" tamboured satin cherry wood **UPGRADE**
- (4) Pacific Coast Marine portlights with heat treated tempered lens **UPGRADE**

Master Office/Study

Located in a quiet spot in this large Master Stateroom, you will not be disturbed. An oversized A/C system was installed to keep this area extra cool during the hottest of summer days in the Bahamas. Open and natural light is yielded by her large vertical portholes that open freely to allow outside fresh air in to help put you at ease when making tough business decisions or just relaxing.

Full refreshment center with U-Line refrigeration drawers and a full bar. All wood drawers with raised panel doors and tops with granite. Access via fax line, telephone and internet are available on the desk top. There is no other sportfish on the market today with a fully functional custom office such as this.

- Satin cherry desk and chair
- Carpeting
- Finished tamboured 3" satin cherry wood bulkheads **UPGRADE**
- Internet/Wi-fi connections
- Sub-zero refrigerator/freezer under counter top with satin cherry raised panel cabinet overhead
- Custom raised panel throughout **UPGRADE**
- AC & DC light fixtures
- Carbon monoxide detector
- AM/FM radio access with local DVD/CD changer and one touch master universal remote
- Speakers
- Telephone outlet
- Removable upholstered headliner
- Upgraded A/C system **UPGRADE**

Master Head

This master head has a very large walk in marble shower fully enclosed in glass. Custom décor including overhead mirrored ceiling and polished chrome fixtures.

- Mahogany flooring
- Removable upholstered headliner
- Custom wallcovering
- Golden Sun marble countertop
- Hardwood baseboards
- Shower enclosure in Terrascape Mystera
- Single enlarged glass door, seat and automatic enclosed sump pump
- AC discharge
- Linen storage lockers
- Storage cabinet with mirror
- Finished polished chrome towel bars
- Headhunter freshwater toilet
- 120V A/C air freshener
- AC & DC light fixtures
- AC duplex outlet
- Plexi mirror around upper cabinet
- DC low voltage lights under toe kicks
- Holding tank 3/4 full indicator light
- Polished chrome fixtures
- Overhead plexiglass ceiling

VIP Stateroom

This Stateroom could be considered a second Master Stateroom! Large and luxurious. Your guests will enjoy the California King Sleep by Number mattress just like the Master Suite as well as the 46" LCD TV and platinum AV package and private head with full floor to ceiling closet. The private head and separate shower contain all the custom upgrades you can imagine. Your guests will certainly find this to be a very comfortable and relaxing space to enjoy.

- Carpeting
- Removable upholstered headliner
- Finished 3" tamboured satin cherry wood bulkheads
- Upholstered berth base
- Select custom California King mattress, custom spreads, pillows and shams **UPGRADE**
- Cedar lined hanging locker with door and automatic light
- Pocket door with private access to head
- Hinged door with access to stateroom
- Blanket locker, outboard with center shelf
- Raised panel satin cherry entry doors **UPGRADE**
- A/C disbursed through fluted wood soffit
- Nightstand with drawers
- Full length mirror
- AC & DC light fixtures
- AC duplex outlets
- AC dimmable lights
- AM/FM audio access with local DVD/CD changer and one touch master universal remote
- Boston acoustic speakers
- Carbon monoxide detector
- 46" LCD with Platinum AV package **UPGRADE**
- Telephone outlet
- Clear plexi aft bulkhead

VIP Head

Elegant and spacious ensuite guest head in port side stateroom.

- Mahogany flooring
- Upper storage cabinet with mirror
- Golden Sun marble countertops and backsplash, sidesplash and integral sink over storage cabinet
- Vanities height 36"
- Headhunter freshwater toilet
- 120V A/C air freshener blower
- AC & DC light fixtures
- AC duplex outlet
- Hardwood base boards
- Raised panel throughout **UPGRADE**
- Removable upholstered headliner
- Custom wallcovering
- Plexi mirror around upper cabinet
- Fiberglass stall shower with door seat and automatic sump pump
- Screened overhead hatch with privacy cover
- Towel bars
- Linen storage
- DC low voltage lights under toe kicks
- Holding tank 3/4 full indicator light
- Plexiglass mirrored ceiling

Bow Guest Stateroom

This is another very unique space that was redesigned for functionality. This Stateroom, located in the bow, has all satin cherry raised paneling on drawers both under the berth and overhead. A dresser with two drawers sits to the starboard side with a hanging cedar lined closet forward featuring a mirror and light. All custom decor and a 20" color LCD TV makes this a comfortable sophisticated space for your guests.

- Carpeting
- Removable upholstered headliner
- Finished satin cherry bulkheads
- Whisperwall padded panels
- Carbon monoxide detector
- Access to head via companionway
- Smoke detector
- DC low voltage lighting under berth
- A/C disbursed through fluted wood soffits
- Custom spreads and pillows
- Telephone outlet
- Satin cherry raised panel storage drawers under berth
- Built in dressers with raised panels
- Cedar lined hanging locker with mirror and light
- Overhead storage lockers
- Screened overhead hatch
- AC & DC light fixtures
- AC dimmable lights
- AC duplex outlets
- 20" color LCD TV **UPGRADE**

Starboard Guest Stateroom

This port guest stateroom plenty of storage underneath the berth which rests on top large dresser drawers underneath. Twin size comfortable mattress with access via steps adjacent to the bed.

- Removable upholstered headliner
- Finished satin cherry bulkheads
- Whisperwall padded panels
- Carbon monoxide detector
- Access to head via companionway
- DC low voltage lights under berth
- Step up to twin berth
- A/C disbursed through fluted wood soffits
- Custom designed comforter and pillows
- Wallcovering
- Satin cherry raised panel storage drawers under berth
- Built in dressers with raised panel woodworking
- Overhead storage lockers
- AC & DC light fixtures
- AC dimmable lights
- AC duplex outlets
- Telephone outlet
- Smoke detector

Guest Head Starboard

This guest head is located starboard and accessed via the companionway and can be separated by a door to accommodate crew or remain open for guests.

- Mahogany flooring
- Upper storage cabinet with mirror
- Golden Sun marble countertops and backsplash, sidesplash and integral sink over storage cabinet
- Vanities 36" in height
- Headhunter freshwater toilet
- 120V A/C air freshener blower
- AC & DC light fixtures
- AC duplex outlet
- Hardwood base boards
- Raised panel throughout **UPGRADE**
- Removable upholstered headliner
- Custom wallcovering
- Plexi mirror around upper cabinet
- Fiberglass stall shower with door seat and automatic sump pump
- Screened overhead hatch with privacy cover
- Towel bars
- Linen storage
- DC low voltage lights under toe kicks
- Pocket door to stateroom port head only
- Holding tank 3/4 full indicator light
- Plexiglass mirrored ceiling

Enclosed Flybridge

This sophisticated space has every décor luxury found throughout the yacht in addition to spectacular electronics that have been upgraded as well. Here the Captain sets his course and takes you to your desired destinations. Upgrades include outrigger cameras, thermal camera, zoom in features, underwater lights and much more. This is a Captain's playground for sure.

- Polished anodized welded aluminum ladder cockpit to bridge deck
- Molded fiberglass observation station
- Computer controlled ethernet monitoring system with LCD touch screen display **UPGRADE**
- Polished anodized welded
- Custom cherry and black leather control station with

aluminum rails

- Elevated L-shaped sofa with rod storage

UPGRADE

- Riding seats port and starboard
- Adjustable Pompanette helmsman seat
- Three piece rounded windshield with safety glass
- Fixed frameless windows with safety glass
- Side aft walls and window frames finished in satin cherry 3" tamboured wood in lieu of standard
- Whisperwall **UPGRADE**
- Intermittent electric windshield wipers with washers and controls
- Non-leaking swing door to aft outside station
- **UPGRADE**
- Central vacuum
- DC low level lights
- Interior stairwell to Salon
- Carbon monoxide detector
- Glendinning controls
- Countertops done in Kosmos marble with bullnose edge **UPGRADE**
- Custom dash and helm layout **UPGRADE**

single lever and throttle controls with emergency back up, hydraulic power assisted 22" helm wheel steering, compass and electric trolling valve control switches **UPGRADE**

- Pod style aft control station with start/stop switches, smaller controls in lieu of standard Palm Beach style
- 32" plasma flip down TV with cherry panel on underside in lieu of black Formica **UPGRADE**
- AC duplex outlets
- AM/FM audio access with local DVD/CD changer, media center, Platinum AV package **UPGRADE**
- Solid wood Mahogany flooring in lieu of carpeting **UPGRADE**
- Whisperwall headliner
- Wood valances
- Telephone outlet
- Custom throw pillows
- Wet bar with sink and faucet **UPGRADE**
- Custom table done in Kosmos marble with matching pedestal to helms chair **UPGRADE**
- 24" drawer style refrigerator/freezer **UPGRADE**
- Raised panel throughout **UPGRADE**
- Custom \$450K High Seas Navigational package **UPGRADE**

Electronics and Navigational Equipment

High Seas electronics outfitted custom package (value of 450K).

- Richie flush mount compass

- Steering and controls for MTU engines
- Underwater camera **UPGRADE**
- Furuno Navnet MFDDBB Radar
- Furuno DRS25A 25kw Radar Transceiver
- Furuno 6' open array antenna
- Furuno PB100 Ultrasonic weather station sensor
- Northstar 6100I
- Simrad autopilot
- ICOM 604 VHF
- ACR RCL-100D 24V remote control searchlight
- Raymarine CAM100 Reverse image day/night engine room camera
- **Tower:** Furuno MFD12 Navnet 3D chart plotter
- **Tower:** SIMRAD AP26 autopilot
- **Tower:** ICOM IC-HM162SW
- **Aft Bridge:** Furuno MFD8 Navnet 3D chart plotter
- **Aft Bridge:** SIMRAD AP26 autopilot
- VEI DM series 17" super sunlight display for radar
- Furuno BBFF3 Network sounder
- Furuno CA50/200 ID-R199 Transducer
- VEI DM Series 17" super sunlight display for sounder
- Furuno MFDDBB Navnet 3D BB GPS/plotter
- VEI DM Series 17" super sunlight display for GPS and plotter
- Second ICOM M604 VHF radio
- Latham sportfish camera with remote and VEI 17" display
- SYRENS WIFI system **UPGRADE**
- AIS system
- Tracvision M7 US SAT TV system
- Tracphone FC250 SAT phone system
- Navnet Sirius weather satellite **UPGRADE**

Engine /Mechanical Equipment

- Twin MTU 16V2000 2400HP engines - common rail (1650 hours)
- Water manifold with centralized shut off valve for sinks and showers
- AC fluorescent lights
- DC lights
- DC exhaust blower
- (2) 27.5 W freshwater cooled Onan Diesel generators
- Variable speed air induction system for engine combustion air with (2) 20" vaneaxial fans
- Polyethylene water lines
- Bronze/chrome plated ball valves thru bolted in solid fiberglass on all underwater thru hull fittings
- A/C compressed air system with air line and regulator
- FM200 fixed fire extinguishing system for engine compartment with automatic and remote manual controls plus audio and visual discharge
- Pressurized 230V AC freshwater pump with central charcoal freshwater filter and back flush capabilities
- 230V AC 50 gallon electric water heater
- Freshwater fill hose for engines and generator
- 24V DC bilge and sump pumps: 7 at 3700gph and 2 at 2000gph with heavy duty float switches and protective guards
- Fiberglass holding tanks with bronze fittings
- Fiberglass water tanks with bronze fittings
- UL marine listed fuel filter and water separator and generator
- Sewage holding tank with 24V DC sewage

- UL marine listed fiberglass fuel tanks constructed with fire retardant resin and bronze fitting and coated with fire retardant paint
- 110V AC reversible oil changing system for engines, gear and generator
- Electric fuel priming pumps
- Electric fuel transfer system with (3) pumps provide back up capability with filtration and dry tank protection for pump
- Rubber deck mat between engines
- Isolated discharge sea chests
- Transducer well glycol filled
- Sealed shower sumps
- Insulation in deck **UPGRADE**
- AC back up water pumps **UPGRADE**
- Bow thruster backup redundant pump adder kit off Mains **UPGRADE**
- Stern thruster **UPGRADE**
- pump plumbed for dockside pump-out with 3/4 full display and alarm
- US Coast guard type A1 UL marine listed fuel lines
- Seawater pressure system with AC pump
- Welded and polished stainless steel grab rails
- Painted polyurethane engine room and bilges
- Protruded fiberglass rudder shelf
- 1" stainless steel steering tie bar with pivoting self aligning ball joint connection at all cylinder and tie bar connections
- Watermaker install thru hulls and wire for installation
- Water Maker **UPGRADE**
- Freshwater AC back up pump **UPGRADE**
- Water delivery kit **UPGRADE**
- Stabilizer system **UPGRADE**
- Pick up sea chests **UPGRADE**

Electrical System

- (2) 24V heavy duty banks with 12V marine batteries mounted in fire retardant fiberglass boxes
- (2) 100 Amp transformer connected retractable shore cords with over current protection and wireless remote control port and starboard
- AC & DC light fixtures
- Ventilation fans in attic space
- Gel/lead acid compatible 240V automatic/programmable battery charger
- Automatic battery paralleling system with switch at control console
- AC 118,000 BTU with reverse cycle heating, with AC compressors, individually controlled by SMX controls
- AD distribution panel with magnetic circuit

- AC dimmable lights
- AC duplex outlets with ground fault protection
- Battery control panels with fuses and isolation switches
- Computer controlled ethernet monitoring system with LCD touch screen display providing visual and audible signals for engines, gears, generators, high bilge water, fire warning in engine compartment, fire extinguisher discharge in engine compartment, AC power loss, smoke detectors, all tank level indication, low battery voltage, alternator failure battery charger failure, bilge pump control and run indication, holding tank pump control and run indication
- Omni directional TV antenna
- Ventilation fans in attic space
- UL 1426 listed boat cable, tin coated with insulation
- breakers
- DC electronics panel with magnetic circuit breaker
- AC distribution panels with magnetic circuit breakers
- AC switching panel with voltage source selector switches, volt meter, ammeter, frequency meters, twin generator start/stop controls, interlock selector breakers and voltage boost switch
- Ground fault protection on AC receptacle and lighting circuits
- Navigation lights
- Telephone CATV inlets
- Telephone and CATV shoreline cord one each

Tower

- Full Pipewelders tuna tower
UPGRADE
- Sunshade with integrated fiberglass dome mount
- Running lights
- One piece molded standing platform
- 51' 4 spreader hydraulic outriggers with bridge release **UPGRADE**
- Red, blue and white LED lights on center ladder and bridge ladder steps **UPGRADE**
- Bench seat with 72" backrest
- Lightning rod on sunshade
- (4) underwater lights **UPGRADE**
- Center rigger 15'

Hull and Forward Deck

- Isophthalic flag blue polyurethane with claret look 4" boot stripe and 1" accent stripe **UPGRADE**
- Blister resistant vinylester resin in hull bottom skin coat - resin infused hull
- Hull and superstructure linear polyester/polyurethane coating
- Ploymar/copper-based anti-fouling bottom paint
- Non skid surface on decks with polyurethane paint with polymeric beads
- Solid fiberglass hull
- Hull sides and superstructure laminated with PVC foam core
- Fiberglass stringers engine room bulkheads and decks of resin infused composite construction using PVC foam core with layers of fiberglass laminate on each side
- Zincs on rudders and shafts
- Dual air horn
- Life ring
- (10) life jackets
- Stainless steel trim tabs
- Wireless remote control for cablemaster
- Hatch with sliding screen, bow deck, port and starboard
- Manganese bronze struts
- Brushed chrome hardware
- Fiberglass pulpit with welded and polished stainless steel anchor chute and roller
- 90 lb. Danforth anchor, anchor line and deck hawse pipe
- Windlass 2500 lb. with 25' of galvanized chain and 300' of rope with deck mounted control switches
- (2) polished stainless steel stern cleats and hawse pipes through bolted in aluminum backing plate
- (4) polished stainless steel springline cleats with chafing strips
- Powder coated grab rails on cabin side
- Aluminum Flybridge ladder with acrylic steps
- Fog bell
- Bow deck access to rope storage locker
- Central vacuum system
- Prop removal installation tool
- Reboarding steps to cockpit
- Deck plates for fuel and water fills and waste pump out
- Additional freshwater washdown foredeck
- 2500 lb. Nautical structures davit on starboard side of bow deck
- Center ladder with plexi steps

Tenders

- 2008 16' Hewes Redfisher tender

- 115HP Yamaha 4 stroke engine
- Garmin bottom plotter/GPS combo
- Minn Kota co-pilot remote for trolling motor
- Bimini cover
- Dual batteries
- Internal battery charger

Features and Upgrades

- Hand selected marble on countertops
- Mahogany flooring throughout
- Raised panel satin cherry cabinetry throughout
- Pneumatic door entry way
- Lift up transom gate
- Additional 25' of mezzanine seating
- Misters combined with A/C vents in cockpit overhang
- Natural teak sole
- Mini port side drop down docking station
- Full color screen black box
- Glass front livewell in transom with LED lighting
- A/C and ventilation fan in day head
- Salon custom end table with wine cooler inside
- (2) Twin plasma TV's in Salon 50" and 46"
- Platinum AV upgrade audio interiors package with full media center
- (2) Additional bar stools Salon side of Galley countertop
- Lazy Susan in corner underneath counter top
- Kaleidoscope entertainment module
- All Sleep by Number mattresses
- Upgraded A/C system
- Underwater lights
- Computer controlled ethernet monitoring system
- Custom black leather and cherry helm station
- 32" plasma drop down TV in Flybridge
- Wet bar and sink in Flybridge
- Custom \$450K High Seas navigational system upgrade
- 24" drawer refrigerator/freezer in Flybridge
- Underwater camera
- SYRENS Wi-Fi system
- Upgraded 2400HP common rail MTU engines
- Upgraded stabilizer system
- Pick up sea chests upgraded
- Water delivery system upgraded
- AC back up water pumps
- Stern thruster and bow thruster back up
- LED lighting in tower and stairs
- Fresh bottom paint 12/2014
- Fresh prop speed 12/2014
- 1500 MTU service completed summer of 2014

Exclusions

Personal effects; list upon request.

Summary

In today's market, it is important that your vessel's manufacturer is healthy and still producing new boats, ensuring the legacy of the name for years to come. Hatteras is surviving these unpredictable economic times by returning to the basics and gearing down current production, keeping them on the path of long term sustainability. Many years from now Hatteras yachts will still be, as they are today, an industry leader and innovator in the highest quality production of sport fishers and motor yachts.

There is not a more well equipped and finely tuned 77CV or large sportfish on the market today. With her state of the art resin infused Flag Blue hull color, she will be the talk of the dock. The 77 hull is a proven tournament winner with several million dollar purses under its history with other 77CV's currently cruising the sportfish circuit. This boat, although feels and runs like a comfortable motor yacht, she can fish next to a custom sportfish and bring home the prize purse. The major difference is the owner and guests will experience a great degree of comfort! With her fully stabilized ride and massive beam and length, all the others will be trailing behind on a blue water day.

While you're sipping your favorite cocktail from the enclosed bridge or aft observation deck, you will see why the most discriminating yachtsmen have chosen Hatteras as their yacht of choice.

For long running cruising she is exceptional and sure to please with her huge range and abundance of storage. There is no destination too far or long for the 77CV. Fine tuned by an experienced captain and laid out by an experienced yachtsman, once you board "Sweet Tuna" you will understand her value. Save millions over new with no wait!

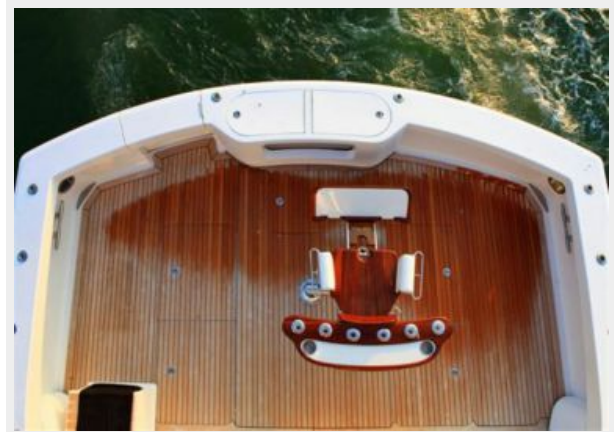
Exclusions

Owner's personal belongings.

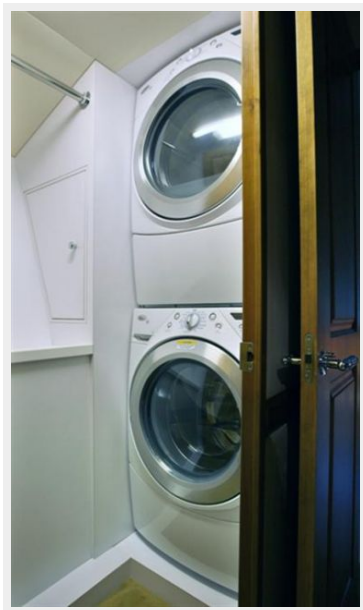
Disclaimer

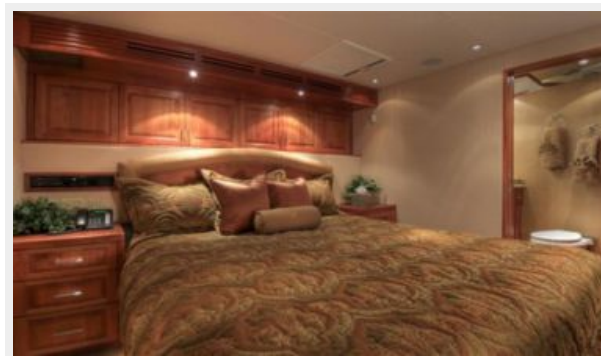
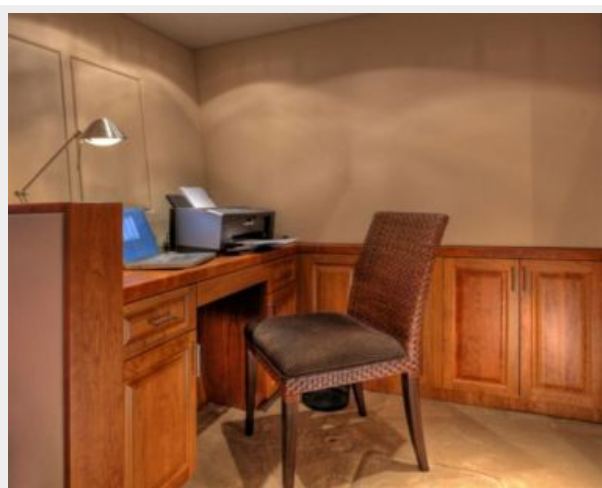
The Company offers the details of this vessel or yacht in good faith but cannot guarantee or warrant the accuracy of this information nor warrant the condition of the vessel. A buyer should instruct his representatives, agents, or his surveyors, to investigate such details as the buyer desires validated. This vessel or yacht is offered subject to prior sale, price change, or withdrawal without notice.

PHOTOS

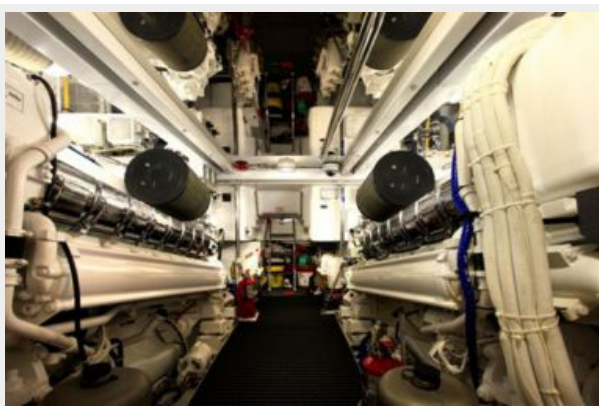
















CONTACTS

Andrey Shestakov, leading yacht broker of the sales department of Shestakov Yacht Sales Inc. Shestakov Yacht Sales Inc., the official representative of the Miami/Fort Lauderdale FL headquarters.

Contact details

Email: **andrey@shestakovyachtsales.com**

Web: shestakovyachtsales.com/en/

Telephones

USA: **+1(954)274-4435**

Office hours

Monday – Saturday: **9:00 - 21:00 EDT**

Sunday: **closed**

Address



Harbour Towne Marina, 850 NE 3rd St,
STE 213, Dania, FL 33004