

AWESOME — MANGUSTA



Builder: MANGUSTA

Year Built: 2005

Model: Motor Yacht

Price: PRICE ON APPLICATION

Location: Italy

LOA: 130' 0" (39.62m)

Beam: 25' 4" (7.72m)

Max Draft: 4' 5" (1.35m)

Cruise Speed: 31 Kts. (36 MPH)

Max Speed: 35 Kts. (40 MPH)

Our experienced yacht broker, Andrey Shestakov, will help you choose and buy a yacht that best suits your needs **AWESOME — MANGUSTA** from our catalogue. Presently, at Shestakov Yacht Sales Inc., we have a wide variety of yachts available on our sale's list. We also work in close contact with all the big yacht manufacturers from all over the world.

If you would like to buy a yacht **AWESOME — MANGUSTA** or would like help answering any questions concerning purchasing, selling or chartering a yacht, please call **+1(954)274-4435**

TABLE OF CONTENTS

TABLE OF CONTENTS	2
SPECIFICATIONS	3
Basic Information	3
Dimensions	3
Speed, Capacities and Weight	3
Accommodations	3
Hull and Deck Information	4
Engine Information	4
DETAILED INFORMATION	5
Accommodations	5
Electronics and Navigational Equipment	5
Electrical System	6
Engine /Mechanical Equipment	7
Galley	7
Audio And Visual Equipment	8
Deck Equipment	8
Safety And Fire Protection	9
Tenders	9
Remarks	9
Exclusions	9
Disclaimer	9
PHOTOS	10
CONTACTS	12
Contact details	12
Telephones	12
Office hours	12
Address	12

SPECIFICATIONS

Basic Information

Category: Motor Yacht

Sub Category: Fast

Model Year: 2005

Year Built: 2005

Country: Italy

Dimensions

LOA: 130' 0" (39.62m)

Beam: 25' 4" (7.72m)

Max Draft: 4' 5" (1.35m)

Speed, Capacities and Weight

Cruise Speed: 31 Kts. (36 MPH)

Cruise Speed Range: 600

Max Speed: 35 Kts. (40 MPH)

Water Capacity: 792.516156 Gallons

Fuel Capacity: 6340.129248 Gallons

Accommodations

Total Cabins: 4

Total Berths: 6

Sleeps: 8

Total Heads: 4

Captain Cabin: True

Crew Cabin: 3

Crew Berths: 3

Crew Sleeps: 6

Crew Heads: 3

Hull and Deck Information

Hull Material: GRP

Hull Color: Metallic Silver

Engine Information

Engines: 2

Manufacturer: MTU

Model: 16V 4000/M90 2720KW

Fuel Type: Diesel

DETAILED INFORMATION

Accommodations

Main Deck :

The aft deck is accessed on the port-side and is equipped with a large central sun-bathing bed, and casual seating.

Central sensor activated doors access to the main salon. There is a welcome bar to port, and comfortable extended couches to starboard. There is an access stair to port forward of the bar which leads to the crew quarters and galley.

The TV is positioned in the furniture separation between the living area and dining area, raising on a lift.

The dining area with a table that seats 10, is situated between the living area and the bridge.

The bridge accesses to port down to the main sleeping accommodations.

To the exterior, forward of the bridge there is a large seating area and an expansive sunbathing area.

Lower Deck :

Descending the stairs there is a TV salon to port, and a day-head opposite to starboard.

The Owner's full beam cabin is found aft, sporting a dressing room, a fridge, a bathroom with a Hamman shower, 2 safes.

Double VIP cabin forward and two guest cabins to either side. The twin cabin to port has 4 bunks. The cabin to starboard a double bed.

Descending the stairs to the galley, there is a small ship's office to port. A Captain's double cabin to port, and 2 crew cabins with 2 beds further aft.

The laundry is found to starboard aft of the galley.

There is a centrally located crew mess, with aft access to the engine room.

Electronics and Navigational Equipment

VSAT communications.

Central Panasonic telephone exchange.

CCTV with 8 cameras and monitors in bridge and crew mess.

Management system monitoring alarms, tanks, engine room, bilges, fire etc

Kahlenberg horns.

Kral fuel management system.

2 X Sanshin searchlights.

Simrad AIS system AI70

1 X VHF Simrad GMDSS

1 X Autopilot Robertson AP9

Simrad echo-sounder/log/wind speed.

1 X SSB Sailor.

1 X Furuno Radar 48m

3 Simrad screens.

2 X Simrad GN33 GPS.

1 X Simrad plotter.

Electrical System

2 X Kohler Generators 55EFOZ-380 VAC 55KW 50Hz

Shore power 380 VAC 3-phase 50Hz of 40KVA

24V DC battery banks

24 to 12 volt converters for 12 volt consumers.

380 VAC

220 VAC.

Lighting : 24 VAC, 24 VDC, 220 VAC

1 X 25m 63 Amp shore-power cable

Engine /Mechanical Equipment

2 X MTU 16V 4000/M90 2720KW@ 2100rpm

2 X ZF gearbox BW 7550, reduction 2.241:1

2 X Kamewa 71 SII waterjets

2 X Kohler Generators 55KW, 380VAC, 50Hz, 55EFOZ

Separ filters on main engines : SWK-2000/40/UMS.

Separ filters on generators : SWK-2000/5

2 X Idromar watermaker MC 5S : 230 litres/hour

Freshwater treatment system : Carbon Active filter CT 6R1.

Hamann sewage treatment plant Mini Compact : 300 litres with bypass.

Fire suppression systems : CO2 and Air Compressed system.

1 X Bowthruster :

Air Conditioning : Frigit 3 X compressors.

1 X AlfaLaval fuel centrifuge.

Galley

Forward, under floor in guest accommodation : 2 X freezers.

1 X Raritan ice-maker behind bar.

1 X Raritan ice-maker in Galley.

2 X fridges behind bar.

2 X fridges in galley.

2 X freezers in galley.

1 X wine-cooler 168L under crew stairs.

1 X Miele microwave M637EC

1 X Miele induction hob.

1 X Extractor

1 X Miele dishwasher G7855

1 X Trash compactor

1 X Raritan ice-maker

2 X Fridges

2 X Freezers

2 X Miele Dryers T5205C

2 X Miele Washers WS5427

Audio And Visual Equipment

Each guest area is controlled by a Crestron system, and linked to the central music library and kalaidascape DVD server. Each Guest cabin and both salons have decoders for SKY SAT TV.

Wi-Fi throughout.

4 X 600 watt free-standing speakers + DJ table.

Salon : Marantz amplifier and separate DVD/CD player + TV NEC

Master : Hitachi TV + LINN DVD

VIP : Wintron TV + LINN DVD.

Double cabin : Wintron TV + LINN DVD

Twin bunk cabin : 2 X Sharp TV + LINN DVD .

Deck Equipment

Fore-deck has a Tepanyaki hotplate, 6 speakers and CD/music system.

1 X fridge on fore-deck.

2 X Lofrans 'Ercole Verticale' windlasses.

2 X Galvanised High Tensile Steel anchors 160kg each.

2 X lengths of 140m 16mm chain.

2 X Capstans T 2500.

1 X Telescopic Gangway 6.00m

Safety And Fire Protection

2 X 10 man Liferrafts.

1 X 6 man Liferaft.

1 X Epirb.

Tenders

1 X Castoldi Jet 480 with Yanmar 85 KW engine.

2 X Yamaha waverunners 1300 RR.

1 X Bauer dive compressor.

6 dive bottles.

Towable donuts.

1 X inflatable canoe.

Remarks

This MCA certified version of the popular 130' Mangusta series was developed with a hands on approach from the Owner's project team. The yacht was very fully specified from the outset, and has been maintained to the highest possible standards. Her metallic paint job and luxurious interior and soft furnishings set her apart from her sisterships.

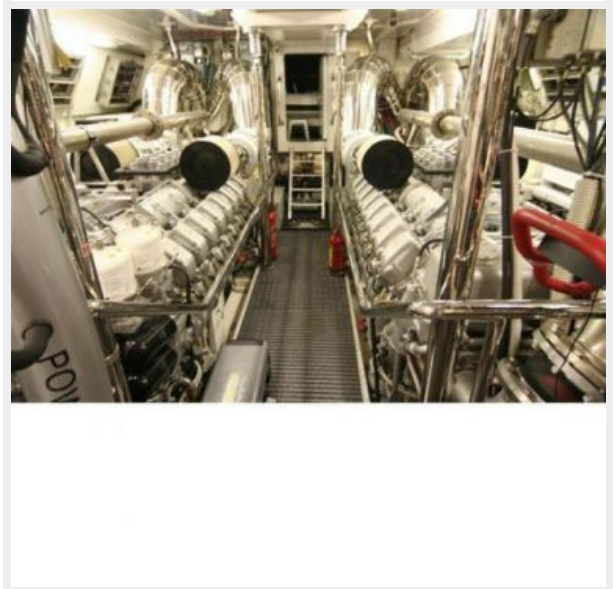
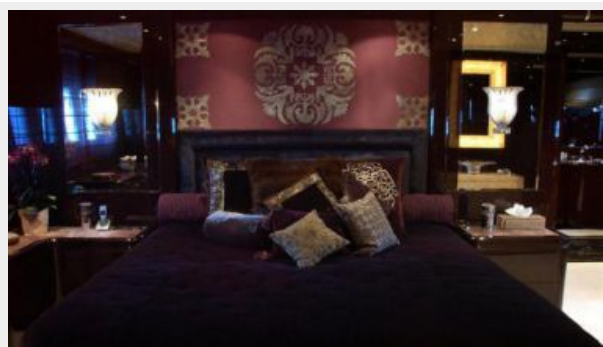
Exclusions

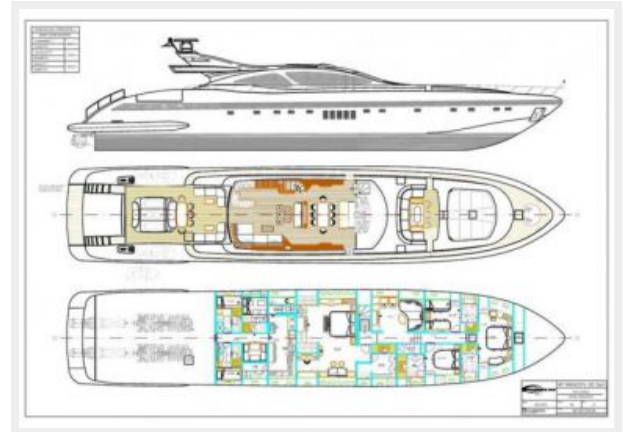
Owner's personal belongings.

Disclaimer

The Company offers the details of this vessel or yacht in good faith but cannot guarantee or warrant the accuracy of this information nor warrant the condition of the vessel. A buyer should instruct his representatives, agents, or his surveyors, to investigate such details as the buyer desires validated. This vessel or yacht is offered subject to prior sale, price change, or withdrawal without notice.

PHOTOS





CONTACTS

Andrey Shestakov, leading yacht broker of the sales department of Shestakov Yacht Sales Inc. Shestakov Yacht Sales Inc., the official representative of the Miami/Fort Lauderdale FL headquarters.

Contact details

Email: **andrey@shestakovyachtsales.com**

Web: shestakovyachtsales.com/en/

Telephones

USA: +1(954)274-4435

Office hours

Monday – Saturday: **9:00 - 21:00** EDT

Sunday: **closed**

Address



Harbour Towne Marina, 850 NE 3rd St,
STE 213, Dania, FL 33004