

80' AZIMUT — AZIMUT



Builder: [AZIMUT](#)

Year Built: 2003

Model: Motor Yacht

Price: PRICE ON APPLICATION

Location: United States

LOA: 80' 0" (24.38m)

Beam: 20' 0" (6.10m)

Max Draft: 6' 7" (2.01m)

Our experienced yacht broker, Andrey Shestakov, will help you choose and buy a yacht that best suits your needs 80' Azimut — AZIMUT from our catalogue. Presently, at Shestakov Yacht Sales Inc., we have a wide variety of yachts available on our sale's list. We also work in close contact with all the big yacht manufacturers from all over the world.

If you would like to buy a yacht 80' Azimut — AZIMUT or would like help answering any questions concerning purchasing, selling or chartering a yacht, please call +1(954)274-4435

TABLE OF CONTENTS

TABLE OF CONTENTS	2
SPECIFICATIONS	4
Basic Information	4
Dimensions	4
Speed, Capacities and Weight	4
Accommodations	4
Hull and Deck Information	4
Engine Information	5
DETAILED INFORMATION	6
Accommodations	6
Master Stateroom	6
VIP Stateroom	6
Guest Cabins	6
Crew Quarters	7
Main Salon	7
Electronics	7
Remarks	8
Exclusions	8
Disclaimer	8
PHOTOS	9
Main Salon	9
Main Salon 2	9
Main Salon 3	9
Galley	9
Galley	9
Master Stateroom	9
VIP Stateroom	10
Guest Stateroom 1	10

Guest Sateroom 2	10
Pilothouse	10
Flybridge Bar	10
Flybridge Dining	10
Exterior	11
Flybridge Tender	11
Engine Room	11
Engine Room 2	11
Engine Room 3	11
Engine Room 4	11
CONTACTS	12
Contact details	12
Telephones	12
Office hours	12
Address	12

SPECIFICATIONS

Basic Information

Category: Motor Yacht

Sub Category: Pilothouse

Model Year: 2003

Year Built: 2003

Country: United States

Fly Bridge: Yes

Cockpit: Yes

Dimensions

LOA: 80' 0" (24.38m)

Beam: 20' 0" (6.10m)

Max Draft: 6' 7" (2.01m)

Speed, Capacities and Weight

Water Capacity: 397 Gallons

Fuel Capacity: 1585 Gallons

Accommodations

Total Cabins: 4

Total Berths: 1

Sleeps: 1

Total Heads: 1

Crew Berths: 1

Crew Sleeps: 1

Crew Heads: 1

Hull and Deck Information

Hull Material: Fiberglass

Engine Information

Engines: 2

Manufacturer: Caterpillar

Model: 3412E

Engine Type: Inboard

Fuel Type: Diesel

DETAILED INFORMATION

Accommodations

4 Staterooms / 4 heads plus crew.

Master Stateroom

- Queen size berth.
- Indirect lighting underneath the bed.
- Two nightstands.
- Three large portlights on both sides (two fixed and one opening).
- Lounge settee on starboard side.
- Vanity with opening counter top, mirror and stool on portside.
- Walk-in closet with drawers and hanging bar.
- Drawers underneath bed.
- Fancoil.
- Curtains and carpet.
- Safe.
- Master Head:
- Two sinks.
- Mirror and cabinets.
- Shower.
- Counter top in granite.
- Marble flooring.
- Air extractor.
- Air conditioning outlet with fan coil.
- Curtains, upholstery and marble.

VIP Stateroom

Located forward.

- Double bed.
- Indirect lighting underneath bed.
- Two nightstands.
- Wardrobe with hanging bar.
- Furniture with doors on both sides.
- Drawers underneath bed.
- Side windows.
- Hatch on ceiling.
- Fancoil.
- Curtains, upholstery and carpet.
- VIP Head:
- Toilet
- Sink.
- Mirror and cabinets.
- Shower.
- Counter top
- Wooden flooring.
- Air extractor.
- Curtain on porthole.

Guest Cabins

- Twin berths each.
- Indirect lighting underneath berths.
- Nightstand.
- Wardrobe with hanging bar.
- Drawers underneath bed.
- Fancoil.
- Curtains, upholstery and carpet.
- Guest Heads (each ensuite):
- Sink.
- Mirror and cabinets.
- Shower with watertight lighting.
- Counter top in marble or granite
- Wooden flooring.
- Air extractor.
- Curtains on portholes

Crew Quarters

Crew quarters accessed from the galley.

- Door to access the engine room.
- Door to access the crew cabin.
- Crew galley.
- Table and seating.
- Washer and dryer (stack unit).
- Sink.
- Refrigerator.
- CD player.
- Porthole.
- Crew Head:
- Toilet.
- Sink and shower.
- Air extractor.
- Wooden flooring.
- Cabinet and mirror.

Main Salon

- Two curved sofas (one each side).
- Indirect lighting underneath sofas.
- Ceiling in vinyl with lacquer wood inserts and lights.
- Coffee table.
- Oval dining table with eight chairs.
- Cabinets to store dishes, glasses and cutlery.
- Dishware, glassware and cutlery for 10 guests.
- Icemaker.
- Curtain, upholstery and carpet.

Electronics

- Console in leather and burl wood.
- Helm seat in lorica for three people, electrically adjustable.
- Furniture for electrical panel.

- Pilot station includes:
- Main engine controls (MMC) with synchronizer.
- Main engine & reversing gear gauges. Instruments for navigation
- Electrical panel
- Compass
- Rudder angle indicator.
- Maneuvering intercom connects flybridge, pilothouse & engine room.

Remarks

Caterpillar Diesels with low hours, four staterooms plus one owner since new, large crew quarters.

Exclusions

Owner's personal belongings.

Disclaimer

The Company offers the details of this vessel or yacht in good faith but cannot guarantee or warrant the accuracy of this information nor warrant the condition of the vessel. A buyer should instruct his representatives, agents, or his surveyors, to investigate such details as the buyer desires validated. This vessel or yacht is offered subject to prior sale, price change, or withdrawal without notice.

PHOTOS

Main Salon



Main Salon 2



Main Salon 3



Galley



Galley



Master Stateroom



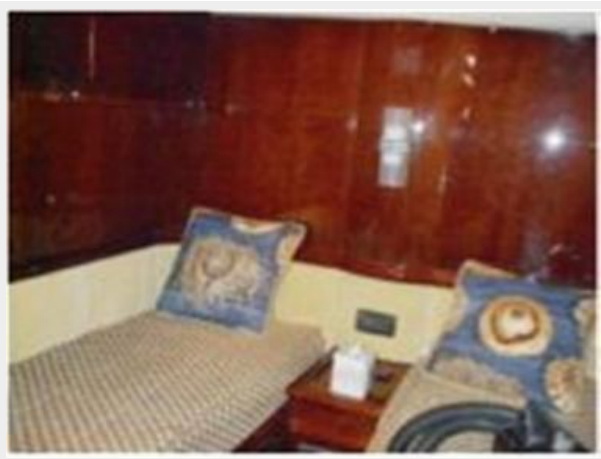
VIP Stateroom



Guest Stateroom 1



Guest Stateroom 2



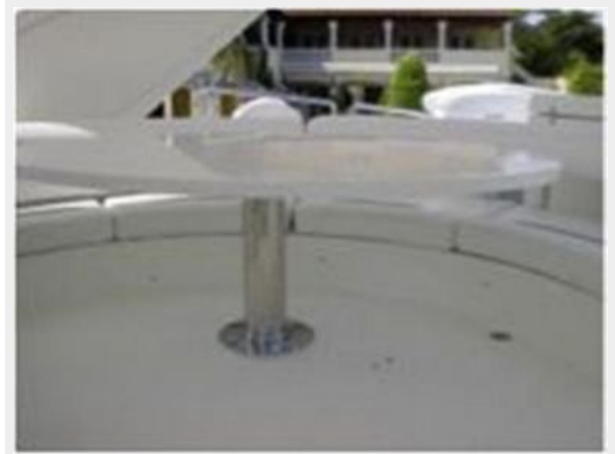
Pilothouse



Flybridge Bar



Flybridge Dining



Flybridge Tender



Exterior



Engine Room



Engine Room 2



Engine Room 3



Engine Room 4



CONTACTS

Andrey Shestakov, leading yacht broker of the sales department of Shestakov Yacht Sales Inc. Shestakov Yacht Sales Inc., the official representative of the Miami/Fort Lauderdale FL headquarters.

Contact details

Email: andrey@shestakovyachtsales.com

Web: shestakovyachtsales.com/en/

Telephones

USA: +1(954)274-4435

Office hours

Monday – Saturday: **9:00 - 21:00** EDT

Sunday: **closed**

Address



Harbour Towne Marina, 850 NE 3rd St,
STE 213, Dania, FL 33004