

BACI — BRISTOL YACHTS



Судостроитель: BRISTOL YACHTS

Длина общая: 47' 0" (14.33m)

Год постройки: 1987

Ширина: 13' 2" (4.01m)

Модель: Крейсерская яхта

Цена: ЦЕНА ЯХТЫ ПО ЗАПРОСУ

Местонахождение: United States

Купить Baci — BRISTOL YACHTS а также выбрать подходящую вам яхту из нашего каталога яхт вам поможет опытный яхтенный брокер Андрей Шестаков. На сегодняшний день компания Shestakov Yacht Sales Inc. имеет большое количество яхт в собственном списке продаж, а также тесно сотрудничает со всеми крупными яхтенными производителями по всему миру.

Для того чтобы купить яхту Baci — BRISTOL YACHTS а также проконсультироваться по любому вопросу связанному с покупкой, продажей, чартером яхт позвоните по телефону **+7(918)465-66-44**.

ОГЛАВЛЕНИЕ

ОГЛАВЛЕНИЕ	2
ХАРАКТЕРИСТИКИ	3
Обзор	3
Основная информация	3
Размеры	3
Скорость, вместимость и масса	3
Размещение	4
Корпус и палуба	4
Информация о двигателе	4
ПОДРОБНОЕ ОПИСАНИЕ	5
Accommodations	5
Deck and Hull	6
Electrical System	7
Electronics and Navigational Equipment	7
Engine /Mechanical Equipment	8
Sails and Rigging	8
Исключения	9
Отказ от ответственности	9
ФОТОГРАФИИ	10
КОНТАКТЫ	12
Контактная информация	12
Телефоны	12
Время работы	12
Адрес	12

ХАРАКТЕРИСТИКИ

Обзор

Best buy in a traditional cruising boat. Looks great, smells good and ready to take you to the Bahamas.

BACI is an aft cockpit version of the Bristol 47.7, designed by Ted Hood, with his famous centerboard shoal draft design. This hull design is the best in the fleet of Bristol Yachts history. A great cruising yacht with good performance characteristics, and ICW proof. Exterior varnish had two coats added May 2014.

"Yacht Brokerage Service above and beyond your expectations"

Основная информация

Тип судна: Крейсерская яхта

Модельный год: 1987

Год постройки: 1987

Страна: United States

Размеры

Длина общая: 47' 0" (14.33m)

Длина по ватерлинии: 37' 3" (11.35m)

Ширина: 13' 2" (4.01m)

Скорость, вместимость и масса

Водоизмещение: 34660 Pounds

Вместимость воды: 120 Gallons

Вместимость сточного бака: 30 Gallons Объем топливного бака: 100 Gallons

Размещение

Всего коек: 1

Спальные места: 1

Всего ком. состава: 1

Койки экипажа: 1

Спальных мест экипажа: 1

Комм. состав экипажа: 1

Корпус и палуба

Материал корпуса: Fiberglass

Информация о двигателе

Двигатели: 1

Производитель: Volvo Penta

Модель: TAMD31A

Тип двигателя: Inboard

Тип топлива: Diesel

ПОДРОБНОЕ ОПИСАНИЕ

Accommodations

BACI has wonderful accommodations, inside and outside. The large aft cockpit is comfortable to lounge or to cruise. The side and fore decks are wide and, in my opinion, it is safe and easy to move about while underway. BACI has good deck storage.

The cockpit companionway leads to the aft stateroom, navigation station and chart table. There is a second entry, from the coach roof, into the salon. The yacht is light and airy and has great throughout. The yacht has an open, comfortable feeling about her and exudes quality and craftsmanship. The two staterooms, two heads, galley, and salon provide all of the room necessary to cruise in comfort with family and friends.

The forward stateroom has large V-berths, cushions new '04. This stateroom has good light and ventilation, lot's of locker and drawer storage space, and a private entry into the forward head and shower. The manual head has Y-valve for overboard discharge or holding tank; the holding tank has a macerator discharge. The teak interior and teak & holly sole are in wonderful condition. The head may also be entered from the companionway leading from the salon.

The salon is large and well designed. BACI has great headroom, lot's of storage, and good light and ventilation throughout. Wonderful dining area to port with U-shaped seating and a large double drop leaf table. The starboard side has a comfortable settee. Both convert into additional sleeping for guests, when needed. The settees have storage below, behind, and above them, and book cases port and starboard, behind the settees. The salon cushions were new September '04. The lockers have louvered door for good looks and ventilation.

The large galley is to starboard, behind the salon. The galley is U-shaped with good countertop space, lot's of storage, and is well equipped. It is hard to imagine a better galley.

The owners stateroom is aft with two very accommodating (oversized) single berths, one port and one starboard; new cushions '04. The navigation station is to starboard. This stateroom has a private head with separate shower stall. The Vacuflush head '03 has Y-valve and holding tank.

- Reverse cycle air conditioning system.
- Air conditioners have digital controls.
- Large double sinks in the galley.
- Hot & Cold pressure water system.
- Water heater is 220 volt.
- Three burner Shipmate stove, propane.
- Stove has an oven with broiler. The entire propane system new '04.
- Samsung microwave oven '03.
- Seafrrost refrigeration, 220 volt.

- Sylvania digital 17" color TV & DVD.
- Hinckley TV antenna '00.
- AM/FM/CD sound system with speakers.
- Safe, for keeping valuables & cash.
- Two heads with showers.
- Separate shower stall in aft head.
- Vacu-Flush head aft.
- Raratain manual head forward.
- Brass lighting fixtures.
- Holding tank with macerator pump.
- Panasonic AM/FM/CD system '95.
- 12 CD changer '95.
- Speakers in cockpit and salon.
- Barometer & clock.

Deck and Hull

Imron painted "Flag Blue" hull looks very good. Hand laid fiberglass hull was lined with Airex for thermal and sound insulation. The ballast is internal. Centerboard is fiberglass; can be used going to weather to point a bit better, otherwise not needed. Centerboard pendant replaced '00.

Zahniser's Yachting Center installed new teak decks in 2004.

- Hull Imron Flag Blue '97.
- Ideal electric windlass, rebuilt '00.
- Windlass now power up & down.
- 45 lb. CQR anchor with 250' chain.
- Bruce anchor with chain & rode.
- Anchor roller @ bow.
- Two new 20 lb propane tanks.
- Heart tank tender.
- Hatches serviced '00.
- New plexiglass in four fixed ports.
- Two tone non-skid, tan/white on coach top.
- New Dodger '12.
- Awning from dodger over cockpit '01.
- Awning from mast, aft, over boom '01.
- Four teak dorade boxes w/vents.
- Custom boarding ladder '97.
- Plastimo life raft with tan cover.
- S/S bow & stern rails.
- Double life lines with gates.

- Optional tall teak toe rails.
- Rub rails with S/S strake.
- Cockpit cushions.
- Teak cockpit table.
- Tan canvas wheel cover '00.
- Teak cockpit sole.
- Cockpit shower '01.
- S/S outboard motor crane hoist '00.
- S/S Radar mast '00.
- Avon dinghy 9.8 HP outboard motor.

Electrical System

BACI is a very well equipped yacht in all regards.

Northern Lights 5 KW generator with soundshield and remote panel '97. Prowatt 800 inverter to power the computer. 12 volt, 110 volt, 220 volt, and voltage meter. 50 amp shore power and shore power cord. Two alternators supply two house batteries and one starting battery. Ample Power battery monitor system with charging diodes. Dockside TV and phone hook-up. Heart 3000 inverter,'00 that charges the batteries and provided 110 voltage. Master electrical panel.

Electronics and Navigational Equipment

BACI has a great navigation station with large chart table. It is well located, well equipped, and has good storage space.

- B&G autopilot '00.
- Northstar 951XD GPS Plotter '00.
- Furuno 1800 Radar '95.
- Radar and antenna mast '00.
- Icom M127 VHF Radio '00.
- Standard cockpit VHF, rebuilt '01.
- Two B&G Hydra 2000 in cockpit.
- B&G Hydra 2000 @ chart table.
- ICOM SSB M710 '00.
- B&G wind speed & direction.
- Ocean PC computer @ chart table '00.
- Radar reflector on mast.
- Hand held VHF radio w/wired charge

Engine /Mechanical Equipment

Engine access is from the aft stateroom and the two cockpit lockers. The larger diesel engine is more than enough power for the Bristol 47.7. We estimate 750 engine hours. The original meter stopped working, new engine hour meter reads 31 hours, generator meter reads 1 hour.

- Oil transfer system.
- New Max prop '01.
- Racor fuel filter.
- Raw water strainer.
- Groco fresh water pump.
- New diesel engine control panel and gauges '00.
- Tank tender for fuel and water.
- Tank tender for holding tank.

Sails and Rigging

The standing rigging was new in '00. The mast and boom were removed, reconditioned, painted '00. The Hood Stoway system was rebuilt and electric drive added. Sails: Stoway mainsail; staysail on quick release inner forestay, with tan UV protection; 150% genoa on roller furling, with tan UV protection; Tradewinds double headsail, for down wind use (It may also be used as a normal headsail if needed). No spinnaker.

- Hood roller furling system for genoa.
- Staysail rigging.
- Running backstays for staysail use.
- Manual backstay adjuster.
- Two Lewmar #65 CST primary winches.
- Two Lewmar #55 secondary winches.
- Two std. winches on mast.
- ST winches & stoppers on coach roof.
- Winches serviced '00.
- Hood mainsail '95.
- Hood tradewind jib '95.
- Hood 150% genoa '95.
- Staysail.
- Four winch handles.
- Keel stepped mast.
- Double spreader rigging '95.
- Spreader lights.
- Hood stoway main sail system '95.
- Boom vang '00.

- Two mast mounted spinnaker poles.

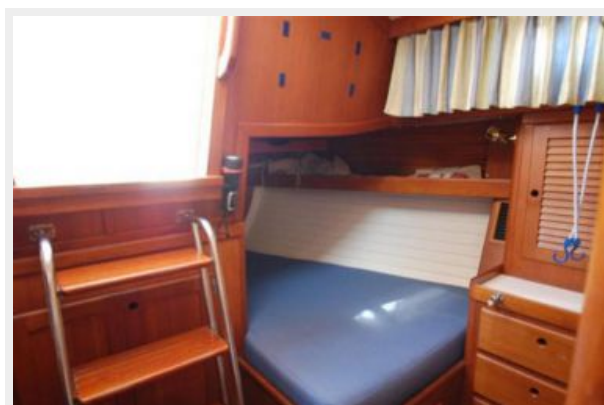
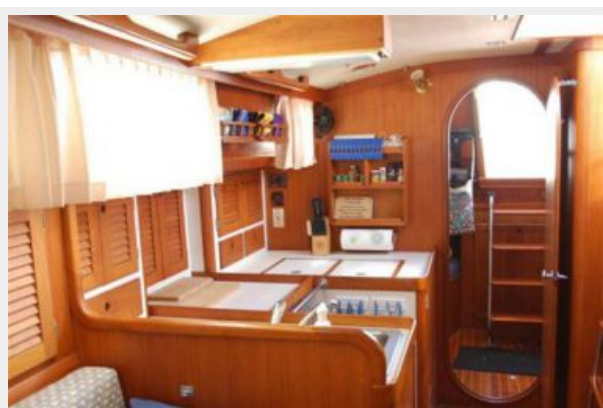
Исключения

При продаже яхты исключаются личные вещи владельца.

Отказ от ответственности

Компания предоставляет описание судна или яхты добросовестно, но не может гарантировать точность этой информации, а также не ручается за техническое состояние. Покупатель должен проинструктировать своих агентов или оценщиков исследовать представленную информацию более подробно, по собственному желанию. Продажа судна или яхты, изменение цены или снятие с продажи будет происходить без предварительного уведомления.

ФОТОГРАФИИ





КОНТАКТЫ

Андрей Шестаков (Andrey Shestakov) – ведущий яхтенный брокер отдела продаж яхт и судов компании Shestakov Yacht Sales Inc. Официальный представитель Shestakov Yacht Sales Inc. для русскоговорящих клиентов в центральном офисе компании в Майами/Форт Лодердейл/Флорида/США.

Контактная информация

Email: andrey@shestakovyachtsales.com

Web: shestakovyachtsales.com

Телефоны

Краснодарский край: **+7(918)465-66-44**

США, Майами, Флорида: **+1(954)274-4435**

Время работы

Понедельник – Суббота: **9:00 - 21:00**
EDT

Воскресенье: **Закрито**

Адрес



Harbour Towne Marina, 850 NE 3rd St,
STE 213, Dania, FL 33004