

NO NAME — HATTERAS



Builder: HATTERAS

Year Built: 1997

Model: Sport Fisherman

Price: PRICE ON APPLICATION

Location: United States

LOA: 65' 0" (19.81m)

Beam: 18' 0" (5.49m)

Cruise Speed: 22 Kts. (25 MPH)

Max Speed: 36 Kts. (41 MPH)

Our experienced yacht broker, Andrey Shestakov, will help you choose and buy a yacht that best suits your needs **No Name — HATTERAS** from our catalogue. Presently, at Shestakov Yacht Sales Inc., we have a wide variety of yachts available on our sale's list. We also work in close contact with all the big yacht manufacturers from all over the world.

If you would like to buy a yacht **No Name — HATTERAS** or would like help answering any questions concerning purchasing, selling or chartering a yacht, please call **+1(954)274-4435**

TABLE OF CONTENTS

TABLE OF CONTENTS	2
SPECIFICATIONS	5
Overview	5
Basic Information	5
Dimensions	5
Speed, Capacities and Weight	5
Accommodations	6
Hull and Deck Information	6
Engine Information	6
DETAILED INFORMATION	7
Accommodations	7
Vessel Walkthrough	7
Salon	8
Galley	8
Dining	9
Master Stateroom	9
Master Head	9
VIP Stateroom	9
Guest Stateroom	10
Guest Head	10
Crew Quarters	10
Helm	10
Flybridge	10
Electronics and Navigational Equipment	11
Electrical System	11
Mechanical Equipment	11
Engine Room	12
Cockpit	12

Decks	12
Hull	12
Exclusions	12
Disclaimer	13
PHOTOS	14
Companionway to Staterooms	14
Entertainment Center in Salon	14
Salon Decor	14
Salon Decor	14
Salon looking aft	15
Salon looking Port	15
Seating in Salon	15
Oven and Cooktop	15
Galley	15
Dinette Seating	16
Dinette	16
Master Stateroom Storage	16
Master Stateroom	16
Master Stateroom Head Vanity	17
Master Stateroom Head	17
VIP Stateroom	17
VIP Stateroom	17
Berths	18
Guest Stateroom Head Wallcovering	18
Crew Stateroom	18
Crew Stateroom Head	18
Crew Stateroom Head	19
Helm	19
Helm	19

Chill box and seating	19
Flybridge view	20
External helm controls	20
Flybridge seating	20
Flybridge seating 2	20
Electronics SAT TV, SAT PHONE and Radar	21
Electronics	21
AC power distribution	21
Port Engine	21
Starboard Engine	22
Port Engine 2	22
Engine room looking aft	22
Starboard Engine 2	22
Cockpit Fighting Chair	22
Watermaker	22
Cockpit Rocket Launchers	23
Cockpit Rocket Launchers 2	23
Port Side of Vessel	23
Bow View	23
View aft from Bow	24
Stern View	24
CONTACTS	25
Contact details	25
Telephones	25
Office hours	25
Address	25

SPECIFICATIONS

Overview

*******NOT FOR SALE TO U.S. RESIDENTS WHILE IN U.S. WATERS******* This 65 Enclosed Bridge Hatteras represents all of the major changes that came in 1997, including a completely redesigned stateroom layout that moved the Master Stateroom amidship for total comfort and space. She also sports an enclosed flybridge, fresh interior and electronics, great paint and every option one could have on a 65. She's a "must-see" and should be first on your list to preview. Whether you are looking for a roughwater tournament battlewagon or a distance cruiser, she is ready to go.

Owner will consider trades for a smaller premium-build convertible or cruiser.

Basic Information

Category: Sport Fisherman

Sub Category: Convertible

Model Year: 1997

Year Built: 1997

Refit Year: 2006

Refit Type: Interior Refit

Country: United States

Registration #: 737229

Coast Guard #: Road Harbour

Fly Bridge: Yes

Dimensions

LOA: 65' 0" (19.81m)

Beam: 18' 0" (5.49m)

Speed, Capacities and Weight

Cruise Speed: 22 Kts. (25 MPH)

Max Speed: 36 Kts. (41 MPH)

Displacement: 102000 Pounds

Water Capacity: 445 Gallons

Holding Tank: 85 Gallons

Fuel Capacity: 1865 Gallons

Accommodations

Total Cabins: 4

Total Berths: 1

Sleeps: 10

Total Heads: 1

Crew Berths: 1

Crew Sleeps: 1

Crew Heads: 1

Hull and Deck Information

Hull Material: Fiberglass

Deck Material: Fiberglass

Hull Configuration: Modified Deep Vee

Hull Color: White

Hull Finish: Plastic

Engine Information

Engines: 2

Manufacturer: Detroit Diesel

Model: 16V92TA

Engine Type: Inboard

Fuel Type: Diesel

DETAILED INFORMATION

Accommodations

This 65 Enclosed Bridge Hatteras represents all of the major changes that came in 1997, including a completely redesigned stateroom layout that moved the Master Stateroom amidship for total comfort and space. She also sports an enclosed flybridge, updated interior, great paint and every option one could have on a 65. She's a "must-see" and should be first on your list to preview. Whether you are looking for a roughwater tournament battlewagon or a distance cruiser, she is ready to go.

Owner will consider trades for a smaller premium-build convertible or cruiser.

Vessel Walkthrough

In 1997, Hatteras redesigned the 65 with several major improvements, including movement of the master stateroom amidships from the bow and an improved gear ratio and redesigned props for better performance. The floorplan redesign served several purposes, including a much larger master stateroom and a more comfortable ride for the owners while underway.

In 2002, the entire interior was updated, including, carpet, countertops, salon seating and cushions. To port is a beautiful leather U-shaped couch and to starboard one will find the entertainment center, power panel and liquor cabinet- all concealed in ash wood panels. Forward and to port is a low-profile U-shaped galley with Corian countertops, Sub-Zero appliances under-mounted, and new wood flooring. Across from the galley is a raised dinette with beautiful table, updated leather couch and an awesome view of the water. Just aft of the dinette is a concealed icemaker.

Moving forward and down a few steps one will find a double-bunk 4th stateroom to starboard/aft. Immediately aft and inboard of this stateroom is a concealed washer and dryer, a private head and a door to the pump room. Moving forward down the companionway, one will find another stateroom with a bunk-style berth arrangement to starboard. This stateroom also has new decor and bedding and has a private access to another head that is shared with the VIP stateroom in the bow. Across from this 3rd stateroom is the master stateroom. It has a queen-sized island berth facing forward, abundant cabinetry and closets, and a private ensuite head with shower and jacuzzi tub. This master stateroom arrangement that is seen in 1997-newer 65's is a must-have.

Farther forward down the companionway towards the bow, one will find the VIP stateroom. It has an island berth, ample storage to port and starboard as well as a private entry to the head. This head is shared with the 3rd stateroom and has a beautiful nautical flag decor that was custom installed. One will notice that, like the salon and galley, the stateroom and head decor has been tastefully updated from the original OEM interior. She really shows like a 2-3 year old yacht.

Another great attribute of this 65 is the enclosed flybridge. Up the ladder from the cockpit one will find a large aft deck with a helm station, a jumpseat for view of the action in the cockpit and also a refrigerated cooler. Walking into the flybridge, one will find a modern bridge with state of the art electronics, twin helm chairs, a couch to port and a forward facing couch on the aft bulkhead. 8 or 9 people can enjoy climate-controlled cruising on the bridge!

Salon

- Updated U-shaped leather seating to port
- Updated custom blinds, valences and wall coverings
- New carpeting throughout
- Custom wall décor
- Concealed flatscreen TV and entertainment center to starboard (2005)
- Master power distribution panel to starboard upon entry to salon

Galley

- Updated low-profile Corian countertops for increased openness in salon
- Sub-Zero refrigerator and freezer
- Dishwasher
- Icemaker
- Kitchen Aid compactor
- Black and Decker coffeemaker
- Whirlpool Electric cooktop
- Excellent storage
- Flush-mount sink
- Updated teak flooring in galley

Dining

- Icemaker concealed aft of dinette
- Elevated seating for 4-5 and great view of water
- Updated leather upholstery
- Corian countertop
- Updated teak flooring

Master Stateroom

- Amidship-designed Master Stateroom first seen in this year- much larger and more comfortable while under way
- Queen size island berth
- Updated wall décor and furnishings
- Cedar-lined closet and abundant storage and cabinets
- Entertainment center
- Private head entry
- Ash wood throughout
- New carpet

Master Head

- Private head with jacuzzi tub and shower
- Mirrored ceiling
- Custom wall decor
- Corian countertops with flush-mount sink
- Vacu-Flush toilet

VIP Stateroom

- Full walkaround island berth
- Private head entry to starboard
- Large hanging locker to port and abundant storage

Guest Stateroom

- Bunk-style arrangement
- Access to head shared with VIP Stateroom
- Hanging locker and generous gear storage
- Updated bedding and wall decor

Guest Head

- Custom nautical wall decor
- Entrances from both VIP and guest staterooms
- Mirrored ceiling
- Updated flooring
- Corian countertop

Crew Quarters

- Private head with shower stall, sink and toilet
- Washer and dryer concealed behind door
- Access to dedicated pump room
- Abundant storage for gear and goods
- Bunk beds

Helm

- Backup DDEC throttle quadrant under helm station in addition to inside and outside stations
- Twin helm chairs with couch aft and to port
- DDEC controls and engine monitoring system

Flybridge

- Enclosed flybridge with tinted windows
- Flybridge is climate-controlled
- Seating for (9) including two helm chairs, an aft couch and couch to port
- Helm station both inside and out
- Mini-fridge on aft deck of flybridge as well as jump seat for two
- Redundant backup controls under helm pod storage

Electronics and Navigational Equipment

- New electronics 2007
- KVH Tracvision Sat TV system
- B&G digital depth and speed monitors
- Interphase forward-looking sonar
- AP22 Autopilot
- Nobeltec Visual Nav computer w/ 19" flatscreen display
- ICOM IC-M127 VHF, Standard GX22360 VHF
- Furuno FR-711 72-mile open array radar
- Furuno FCV-292 Color Bottom Machine
- Furuno NavNet GPS/Radar/Fishfinder Integration
- ACR Searchlight w/ remote
- Intercom phone system to salon

Electrical System

- (2) Onan 20 kW Gensets
- (6) Cruisair A/C's
- (3) windshield wipers on bridge
- Galley Maid 24V windlass w/ foot controls

Mechanical Equipment

- (5) auto bilge pumps and one

- Twin 16V92TA DDEC's at 1450 hp/side
- (2) 20kW Onan gensets-remote start and soundshields
- Glendinning cabledmasters
- Oil exchange system for mains and gensets
- Sea Recovery 800 gpd watermaker
- emergency
- Hatteras alarm monitors
- Air seps
- Separate pump room accessed from crew quarters
- Inline fuel polishing system
- 4:1 gear ratio

Engine Room

- Massive volume for access to all mechanicals
- Standing headroom
- Individual engine gauge panels for both mains

Cockpit

- Transom door
- Custom Bluewater fighting chair
- Full tackle center attached to aft salon bulkhead
- Massive refrigerated fishbox and storage in cockpit sole
- 37' Rupp outriggers
- Cockpit freezer
- Bait prep station
- Cockpit engine access
- 29 rocket launchers in cockpit

Decks

- Imron paint in excellent condition
- All stainless steel rails

Hull

Painted with Imron paint-in excellent condition.

Exclusions

Owner's personal belongings.

Disclaimer

The Company offers the details of this vessel or yacht in good faith but cannot guarantee or warrant the accuracy of this information nor warrant the condition of the vessel. A buyer should instruct his representatives, agents, or his surveyors, to investigate such details as the buyer desires validated. This vessel or yacht is offered subject to prior sale, price change, or withdrawal without notice.

PHOTOS

Entertainment Center in Salon



Companionway to Staterooms



Salon Decor



Salon Decor



Salon looking aft



Salon looking Port



Seating in Salon



Oven and Cooktop



Galley



Dinette



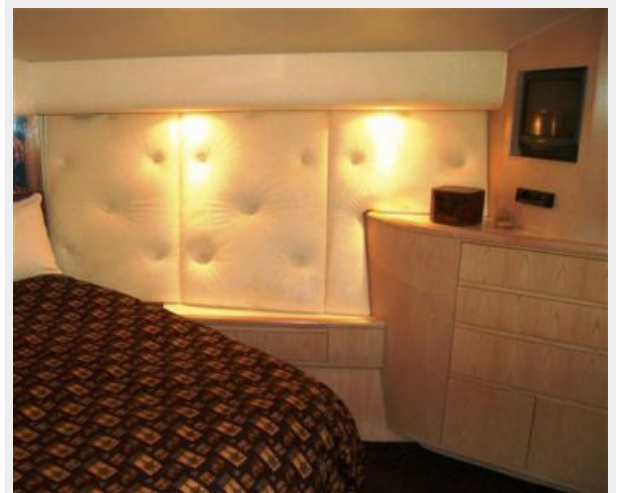
Dinette Seating



Master Stateroom



Master Stateroom Storage



Master Stateroom Head



Master Stateroom Head Vanity



VIP Stateroom



VIP Stateroom



Berths



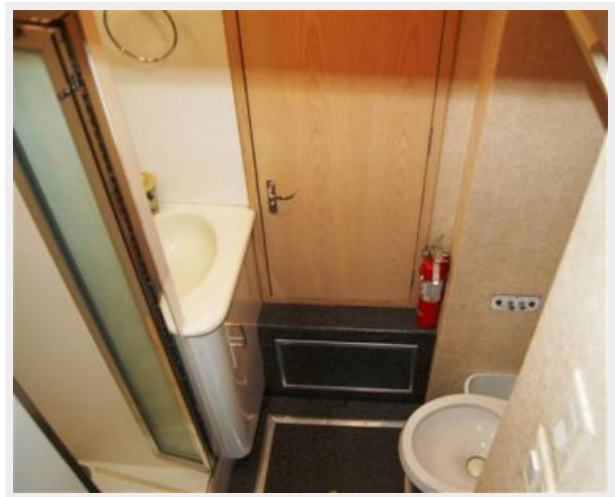
Guest Stateroom Head Wallcovering



Crew Stateroom



Crew Stateroom Head



Crew Stateroom Head



Helm



Helm



Chill box and seating



External helm controls



Flybridge view



Flybridge seating



Flybridge seating 2



Electronics



Electronics SAT TV, SAT PHONE and Radar



AC power distribution



Port Engine



Port Engine 2



Starboard Engine



Starboard Engine 2



Engine room looking aft



Watermaker



Cockpit Fighting Chair



Cockpit Rocket Launchers



Cockpit Rocket Launchers 2



Bow View



Port Side of Vessel



View aft from Bow



Stern View



CONTACTS

Andrey Shestakov, leading yacht broker of the sales department of Shestakov Yacht Sales Inc. Shestakov Yacht Sales Inc., the official representative of the Miami/Fort Lauderdale FL headquarters.

Contact details

Email: andrey@shestakovyachtsales.com

Web: shestakovyachtsales.com/en/

Telephones

USA: +1(954)274-4435

Office hours

Monday – Saturday: **9:00 - 21:00** EDT

Sunday: **closed**

Address



Harbour Towne Marina, 850 NE 3rd St,
STE 213, Dania, FL 33004