

## NO NAME — HATTERAS



**Судостроитель:** HATTERAS

**Год постройки:** 1997

**Модель:** Катер для спортивной рыбалки

**Цена:** ЦЕНА ЯХТЫ ПО ЗАПРОСУ

**Местонахождение:** United States

**Длина общая:** 65' 0" (19.81m)

**Ширина:** 18' 0" (5.49m)

**Крейс. скорость:** 22 Kts. (25 MPH)

**Макс. скорость:** 36 Kts. (41 MPH)

Купить No Name — HATTERAS а также выбрать подходящую вам яхту из нашего каталога яхт вам поможет опытный яхтенный брокер Андрей Шестаков. На сегодняшний день компания Shestakov Yacht Sales Inc. имеет большое количество яхт в собственном списке продаж, а также тесно сотрудничает со всеми крупными яхтенными производителями по всему миру.

Для того чтобы купить яхту No Name — HATTERAS а также проконсультироваться по любому вопросу связанному с покупкой, продажей, чартером яхт позвоните по телефону **+7(918)465-66-44**.

# ОГЛАВЛЕНИЕ

ОГЛАВЛЕНИЕ	2
ХАРАКТЕРИСТИКИ	5
Обзор	5
Основная информация	5
Размеры	5
Скорость, вместимость и масса	6
Размещение	6
Корпус и палуба	6
Информация о двигателе	6
ПОДРОБНОЕ ОПИСАНИЕ	7
Accommodations	7
Vessel Walkthrough	7
Salon	8
Galley	8
Dining	9
Master Stateroom	9
Master Head	9
VIP Stateroom	9
Guest Stateroom	10
Guest Head	10
Crew Quarters	10
Helm	10
Flybridge	10
Electronics and Navigational Equipment	11
Electrical System	11
Mechanical Equipment	11
Engine Room	12
Cockpit	12

Decks	12
Hull	12
Исключения	12
Отказ от ответственности	13
<b>ФОТОГРАФИИ</b>	<b>14</b>
Companionway to Staterooms	14
Entertainment Center in Salon	14
Salon Decor	14
Salon Decor	14
Salon looking aft	15
Salon looking Port	15
Seating in Salon	15
Oven and Cooktop	15
Galley	15
Dinette Seating	16
Dinette	16
Master Stateroom Storage	16
Master Stateroom	16
Master Stateroom Head Vanity	17
Master Stateroom Head	17
VIP Stateroom	17
VIP Stateroom	17
Berths	18
Guest Stateroom Head Wallcovering	18
Crew Stateroom	18
Crew Stateroom Head	18
Crew Stateroom Head	19
Helm	19
Helm	19

---

Chill box and seating	19
Flybridge view	20
External helm controls	20
Flybridge seating	20
Flybridge seating 2	20
Electronics SAT TV, SAT PHONE and Radar	21
Electronics	21
AC power distribution	21
Port Engine	21
Starboard Engine	22
Port Engine 2	22
Engine room looking aft	22
Starboard Engine 2	22
Cockpit Fighting Chair	22
Watermaker	22
Cockpit Rocket Launchers	23
Cockpit Rocket Launchers 2	23
Port Side of Vessel	23
Bow View	23
View aft from Bow	24
Stern View	24
<b>КОНТАКТЫ</b>	<b>25</b>
Контактная информация	25
Телефоны	25
Время работы	25
Адрес	25

# ХАРАКТЕРИСТИКИ

## Обзор

\*\*\*\*\*NOT FOR SALE TO U.S. RESIDENTS WHILE IN U.S. WATERS\*\*\*\*\* This 65 Enclosed Bridge Hatteras represents all of the major changes that came in 1997, including a completely redesigned stateroom layout that moved the Master Stateroom amidship for total comfort and space. She also sports an enclosed flybridge, fresh interior and electronics, great paint and every option one could have on a 65. She's a "must-see" and should be first on your list to preview. Whether you are looking for a roughwater tournament battlewagon or a distance cruiser, she is ready to go.

Owner will consider trades for a smaller premium-build convertible or cruiser.

## Основная информация

**Тип судна:** Катер для спортивной рыбалки

**Подкатегория:** Convertible

**Модельный год:** 1997

**Год постройки:** 1997

**Год обновления:** 2006

**Вид обновления:** Interior Refit

**Страна:** United States

**Регистрационный номер:** 737229

**Номер регистрации в береговой охране:** Road Harbour

**Открытая палуба мостика:** Да

## Размеры

**Длина общая:** 65' 0" (19.81m)

**Ширина:** 18' 0" (5.49m)

## Скорость, вместимость и масса

---

**Крейс. скорость:** 22 Kts. (25 MPH)

**Макс. скорость:** 36 Kts. (41 MPH)

**Водоизмещение:** 102000 Pounds

**Вместимость воды:** 445 Gallons

**Вместимость сточного бака:** 85 Gallons

**Объем топливного бака:** 1865 Gallons

## Размещение

---

**Всего кают:** 4

**Всего коек:** 1

**Спальные места:** 10

**Всего ком. состава:** 1

**Койки экипажа:** 1

**Спальных мест экипажа:** 1

**Комм. состав экипажа:** 1

## Корпус и палуба

---

**Материал корпуса:** Fiberglass

**Материал палубы:** Fiberglass

**Комплектация корпуса:** Modified Deep Vee

**Цвет корпуса:** White

**Отделка корпуса:** Plastic

## Информация о двигателе

---

**Двигатели:** 2

**Производитель:** Detroit Diesel

**Модель:** 16V92TA

**Тип двигателя:** Inboard

**Тип топлива:** Diesel

---

# ПОДРОБНОЕ ОПИСАНИЕ

---

## Accommodations

---

This 65 Enclosed Bridge Hatteras represents all of the major changes that came in 1997, including a completely redesigned stateroom layout that moved the Master Stateroom amidship for total comfort and space. She also sports an enclosed flybridge, updated interior, great paint and every option one could have on a 65. She's a "must-see" and should be first on your list to preview. Whether you are looking for a roughwater tournament battlewagon or a distance cruiser, she is ready to go.

Owner will consider trades for a smaller premium-build convertible or cruiser.

## Vessel Walkthrough

---

In 1997, Hatteras redesigned the 65 with several major improvements, including movement of the master stateroom amidships from the bow and an improved gear ratio and redesigned props for better performance. The floorplan redesign served several purposes, including a much larger master stateroom and a more comfortable ride for the owners while underway.

In 2002, the entire interior was updated, including, carpet, countertops, salon seating and cushions. To port is a beautiful leather U-shaped couch and to starboard one will find the entertainment center, power panel and liquor cabinet- all concealed in ash wood panels. Forward and to port is a low-profile U-shaped galley with Corian countertops, Sub-Zero appliances under-mounted, and new wood flooring. Across from the galley is a raised dinette with beautiful table, updated leather couch and an awesome view of the water. Just aft of the dinette is a concealed icemaker.

Moving forward and down a few steps one will find a double-bunk 4th stateroom to starboard/aft. Immediately aft and inboard of this stateroom is a concealed washer and dryer, a private head and a door to the pump room. Moving forward down the companionway, one will find another stateroom with a bunk-style berth arrangement to starboard. This stateroom also has new decor and bedding and has a private access to another head that is shared with the VIP stateroom in the bow. Across from this 3rd stateroom is the master stateroom. It has a queen-sized island berth facing forward, abundant cabinetry and closets, and a private ensuite head with shower and jacuzzi tub. This master stateroom arrangement that is seen in 1997-newer 65's is a must-have.

Farther forward down the companionway towards the bow, one will find the VIP stateroom. It has an island berth, ample storage to port and starboard as well as a private entry to the head. This head is shared with the 3rd stateroom and has a beautiful nautical flag decor that was custom installed. One will notice that, like the salon and galley, the stateroom and head decor has been tastefully updated from the original OEM interior. She really shows like a 2-3 year old yacht.

Another great attribute of this 65 is the enclosed flybridge. Up the ladder from the cockpit one will find a large aft deck with a helm station, a jumpseat for view of the action in the cockpit and also a refrigerated cooler. Walking into the flybridge, one will find a modern bridge with state of the art electronics, twin helm chairs, a couch to port and a forward facing couch on the aft bulkhead. 8 or 9 people can enjoy climate-controlled cruising on the bridge!

## Salon

---

- Updated U-shaped leather seating to port
- Updated custom blinds, valences and wall coverings
- New carpeting throughout
- Custom wall décor
- Concealed flatscreen TV and entertainment center to starboard (2005)
- Master power distribution panel to starboard upon entry to salon

## Galley

---

- Updated low-profile Corian countertops for increased openness in salon
- Sub-Zero refrigerator and freezer
- Dishwasher
- Icemaker
- Kitchen Aid compactor
- Black and Decker coffeemaker
- Whirlpool Electric cooktop
- Excellent storage
- Flush-mount sink
- Updated teak flooring in galley



---

## Dining

---

- Icemaker concealed aft of dinette
- Elevated seating for 4-5 and great view of water
- Updated leather upholstery
- Corian countertop
- Updated teak flooring

---

## Master Stateroom

---

- Amidship-designed Master Stateroom first seen in this year- much larger and more comfortable while under way
- Queen size island berth
- Updated wall décor and furnishings
- Cedar-lined closet and abundant storage and cabinets
- Entertainment center
- Private head entry
- Ash wood throughout
- New carpet

---

## Master Head

---

- Private head with jacuzzi tub and shower
- Mirrored ceiling
- Custom wall decor
- Corian countertops with flush-mount sink
- Vacu-Flush toilet

---

## VIP Stateroom

---

- Full walkaround island berth
- Private head entry to starboard
- Large hanging locker to port and abundant storage

---

## Guest Stateroom

---

- Bunk-style arrangement
- Access to head shared with VIP Stateroom
- Hanging locker and generous gear storage
- Updated bedding and wall decor

---

## Guest Head

---

- Custom nautical wall decor
- Entrances from both VIP and guest staterooms
- Mirrored ceiling
- Updated flooring
- Corian countertop

---

## Crew Quarters

---

- Private head with shower stall, sink and toilet
- Washer and dryer concealed behind door
- Access to dedicated pump room
- Abundant storage for gear and goods
- Bunk beds

---

## Helm

---

- Backup DDEC throttle quadrant under helm station in addition to inside and outside stations
- Twin helm chairs with couch aft and to port
- DDEC controls and engine monitoring system

---

## Flybridge

---

- Enclosed flybridge with tinted windows
- Flybridge is climate-controlled
- Seating for (9) including two helm chairs, an aft couch and couch to port
- Helm station both inside and out
- Mini-fridge on aft deck of flybridge as well as jump seat for two
- Redundant backup controls under helm pod storage

## Electronics and Navigational Equipment

---

- New electronics 2007
- KVH Tracvision Sat TV system
- B&G digital depth and speed monitors
- Interphase forward-looking sonar
- AP22 Autopilot
- Nobeltec Visual Nav computer w/ 19" flatscreen display
- ICOM IC-M127 VHF, Standard GX22360 VHF
- Furuno FR-711 72-mile open array radar
- Furuno FCV-292 Color Bottom Machine
- Furuno NavNet GPS/Radar/Fishfinder Integration
- ACR Searchlight w/ remote
- Intercom phone system to salon

## Electrical System

---

- (2) Onan 20 kW Gensets
- (6) Cruisair A/C's
- (3) windshield wipers on bridge
- Galley Maid 24V windlass w/ foot controls

## Mechanical Equipment

---

- (5) auto bilge pumps and one

- Twin 16V92TA DDEC's at 1450 hp/side
- (2) 20kW Onan gensets-remote start and soundshields
- Glendinning cablemasters
- Oil exchange system for mains and gensets
- Sea Recovery 800 gpd watermaker
- emergency
- Hatteras alarm monitors
- Air seps
- Separate pump room accessed from crew quarters
- Inline fuel polishing system
- 4:1 gear ratio

## Engine Room

---

- Massive volume for access to all mechanicals
- Standing headroom
- Individual engine gauge panels for both mains

## Cockpit

---

- Transom door
- Custom Bluewater fighting chair
- Full tackle center attached to aft salon bulkhead
- Massive refrigerated fishbox and storage in cockpit sole
- 37' Rupp outriggers
- Cockpit freezer
- Bait prep station
- Cockpit engine access
- 29 rocket launchers in cockpit

## Decks

---

- Imron paint in excellent condition
- All stainless steel rails

## Hull

---

Painted with Imron paint-in excellent condition.

## Исключения

---

При продаже яхты исключаются личные вещи владельца.

---

## Отказ от ответственности

---

Компания предоставляет описание судна или яхты добросовестно, но не может гарантировать точность этой информации, а также не ручается за техническое состояние. Покупатель должен проинструктировать своих агентов или оценщиков исследовать представленную информацию более подробно, по собственному желанию. Продажа судна или яхты, изменение цены или снятие с продажи будет происходить без предварительного уведомления.

# ФОТОГРАФИИ

Entertainment Center in Salon



Companionway to Staterooms



Salon Decor



Salon Decor



Salon looking aft



Salon looking Port



Seating in Salon



Oven and Cooktop



Galley





**Dinette**



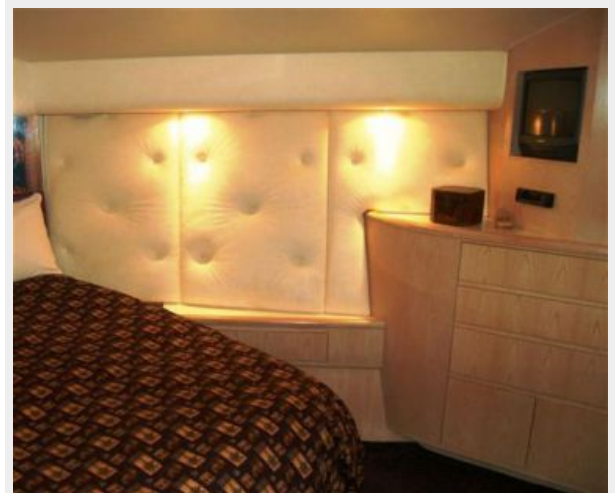
**Dinette Seating**



**Master Stateroom**



**Master Stateroom Storage**





**Master Stateroom Head**



**Master Stateroom Head Vanity**



**VIP Stateroom**



**VIP Stateroom**



**Berths**



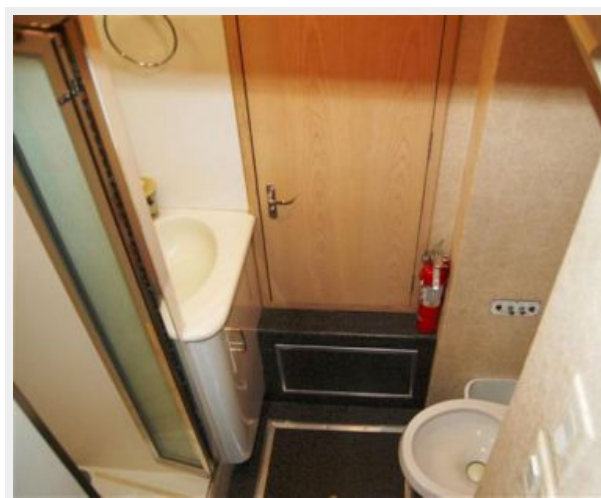
**Guest Stateroom Head Wallcovering**



**Crew Stateroom**



**Crew Stateroom Head**



**Crew Stateroom Head**



**Helm**



**Helm**



**Chill box and seating**





**External helm controls**



**Flybridge view**



**Flybridge seating**



**Flybridge seating 2**



### Electronics



### Electronics SAT TV, SAT PHONE and Radar



### AC power distribution



### Port Engine





**Port Engine 2**



**Starboard Engine**



**Starboard Engine 2**



**Engine room looking aft**



**Watermaker**



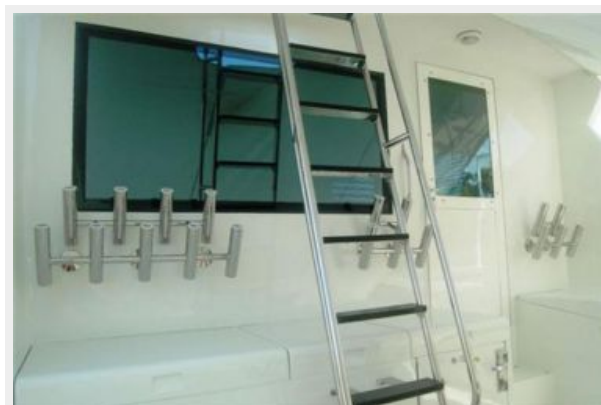
**Cockpit Fighting Chair**



### Cockpit Rocket Launchers



### Cockpit Rocket Launchers 2



### Bow View



### Port Side of Vessel



**View aft from Bow**



**Stern View**





# КОНТАКТЫ

Андрей Шестаков (Andrey Shestakov) – ведущий яхтенный брокер отдела продаж яхт и судов компании Shestakov Yacht Sales Inc. Официальный представитель Shestakov Yacht Sales Inc. для русскоговорящих клиентов в центральном офисе компании в Майами/Форт Лодердейл/Флорида/США.

## Контактная информация

Email: [andrey@shestakovyachtsales.com](mailto:andrey@shestakovyachtsales.com)

Web: [shestakovyachtsales.com](http://shestakovyachtsales.com)

## Телефоны

Краснодарский край: **+7(918)465-66-44**

США, Майами, Флорида: **+1(954)274-4435**

## Время работы

Понедельник – Суббота: **9:00 - 21:00**  
EDT

Воскресенье: **Закрето**

## Адрес



Harbour Towne Marina, 850 NE 3rd St,  
STE 213, Dania, FL 33004