

ALLEGRIA — HAKVOORT



Builder: HAKVOORT

Year Built: 2004

Model: Motor Yacht

Price: PRICE ON APPLICATION

Location: United States

LOA: 152' 0" (46.30m)

Beam: 29' 4" (8.92m)

Min Draft: 0' 0" (0.00m)

Max Draft: 8' 11" (2.69m)

Cruise Speed: 12 Kts. (14 MPH)

Max Speed: 15 Kts. (17 MPH)

Our experienced yacht broker, Andrey Shestakov, will help you choose and buy a yacht that best suits your needs **ALLEGRIA — HAKVOORT** from our catalogue. Presently, at Shestakov Yacht Sales Inc., we have a wide variety of yachts available on our sale's list. We also work in close contact with all the big yacht manufacturers from all over the world.

If you would like to buy a yacht **ALLEGRIA — HAKVOORT** or would like help answering any questions concerning purchasing, selling or chartering a yacht, please call **+1(954)274-4435**

TABLE OF CONTENTS

TABLE OF CONTENTS	2
SPECIFICATIONS	4
Overview	4
Basic Information	4
Dimensions	4
Speed, Capacities and Weight	4
Accommodations	5
Hull and Deck Information	5
Engine Information	5
DETAILED INFORMATION	6
Accommodations	6
Electronics and Navigational Equipment	6
Engine /Mechanical Equipment	7
Tenders	7
Exclusions	7
Disclaimer	7
PHOTOS	8
Running	8
Dining	8
Master SR	9
Master Bath	9
Master Stateroom	9
Guest SR	10
Theater/Lounge	10
Sun Deck	12
decks	13
At Anchor	13
Cruising	14

CONTACTS	15
Contact details	15
Telephones	15
Office hours	15
Address	15

SPECIFICATIONS

Overview

Basic Information

Category: Motor Yacht

Model Year: 2004

Year Built: 2004

Country: United States

Fly Bridge: Yes

Dimensions

LOA: 152' 0" (46.30m)

LOD: 0' 0" (0.00m)

Beam: 29' 4" (8.92m)

Min Draft: 0' 0" (0.00m)

Max Draft: 8' 11" (2.69m)

Clearance: 0' 0" (0.00m)

MFG Length: 152' 0" (46.30m)

Speed, Capacities and Weight

Cruise Speed: 12 Kts. (14 MPH)

Cruise Speed Range: 5000

Max Speed: 15 Kts. (17 MPH)

Gross Tonnage: 499 Pounds

Fuel Capacity: 25003 Gallons

Accommodations

Total Cabins: 5

Total Berths: 7

Sleeps: 11

Total Heads: 7

Crew Cabin: 5

Crew Berths: 9

Crew Sleeps: 9

Crew Heads: 5

Hull and Deck Information

Hull Material: Steel

Deck Material: Teak

Hull Configuration: Full Displacement

Hull Color: White

Hull Designer: Glade Johnson

Interior Designer: Glade Johnson

Engine Information

Engines: 2

Manufacturer: Caterpillar

Model: 3508B

Engine Type: Inboard

Fuel Type: Diesel

DETAILED INFORMATION

Accommodations

Allegria sleeps 10-11 in five beautifully appointed ensuite staterooms. Located on the main deck, the full-width master suite offers luxurious privacy. The master includes a study area, a walk-in closet and dressing room. The stunning master bath, overflowing with diaspro marble, features a large Jacuzzi, rain shower and etched glass. Accommodations for eight additional guests are on the lower deck in three VIP suites and one twin stateroom with Pullman, all with ensuite bathrooms. The guest quarters also house a treadmill and other exercise equipment. All four guest staterooms feature fine marbles and cherry and maple burl woods and are equipped with state-of-the-art entertainment and music systems.

The two aft decks--on the main and upper decks--call out for al fresco entertaining, while the open-air top deck beckons with Jacuzzi, grill, sun pads, bar, chaise lounges, and even a hammock. The high-tech pilothouse anchors the upper deck, forward of a comfortable sky lounge that doubles as a movie theatre with a 112" drop screen and full surround sound. The spacious and elegant main salon on the main deck contains a full bar, game table, and circular seating area.

With an impeccable interior designed by the renowned Glade Johnson, Allegria embraces the best of soft contemporary and traditional elements. The interiors are spacious and elegant, finished with the rich hues and textures of carefully chosen exotic woods, fabrics, marbles, and onyx. Two spacious salons provide comfortable areas for relaxation, entertainment, or cocktails. The inviting furniture is custom-made with soft chenilles in light neutral tones. The custom-designed carpet is made of hand-tufted New Zealand wool. Rich woods throughout the boat include sapele, mahogany, and maple burl.

Electronics and Navigational Equipment

X 2 : Northstar 952x GPS Chart plotters	X 2 : Raytheon PathfinderMk2 Radar	X
2 : ICom ICGM 1600 VHF Radio	X 1 : Shipmate RS 8400 VHF	X 1 : Furuno FCV-1200L Depth sounder
X 1 : C. Plath Naviknot 3 Speed Log	X 1 : C. Plath Magnetic Compass	X 1 : Anschutz STD 20-TMC Gyro Compass
X 1 : Anschutz NP 2010 Auto Pilot	X 1 : Anschutz NautoAlarm System	X 1 : Anschutz SteeringMode Selector
X 1 : Transas Integrated Navigation Computer	X 1 : Shipmate RS 8400 DSC Distress	
X 1 : Exalto Wiper Control System	X 1 : Touch Monitor Access & Camera Security System	
X 1 : Praxis Systems Monitor	X 1 : Praxis Alarm Panel	X 2 : Carlisle & Finch Searchlight Control
X 2 : B&G Hydra Wind Instruments	X 1 : Brooks & Gatehouse	

Wind Direction Indicator X 1 : Brooks & Gatehouse Wind Speed Indicator X 1 :
 Kahlenberg Whistle Control Panel X 1 : Naiad Marine Zero Speed Stabilizer Control Panel
 X 1 : Raymarine Intercom System X 1 : JRC JUE-75C Inmarsat C & JRC NKG-800
 Printer X 1 : JRC JSB-196 GM MF/HF Radio X 1 : Furuno FAX-210 Weatherfax
 X 1 : JRC NCR-300A Navtex X 1 : Tyco F&S MX Fire Detection Control Panel

Engine /Mechanical Equipment

Jastram 100KW air injection bow thruster • Tenfiord steering • "LiteTouch" lighting system • 24/7 high speed Internet, including wireless network for email access and VOIP allowing guests to receive calls anywhere. • Air conditioning • Naiad "Zero Speed" at-anchor stabilizer system • Redundant radio systems • Sat & cell phones • Laptop computers • Fax • Printer • Scanner • Copier • On-deck cooking grill • Deck Jacuzzi • Integrated transom swim platform and steps
 Generators replaced May 2013. Port Genset = 4639 . Stbd Genset = 4666 as of 4/30/2015 New Shore Power Converter, WaterMaker, Hull Repainted 3/16

Tenders

•20' Xtender w/ 150 hp Yamaha • 11' Brig w/ 40 hp outboard • 2 x RXP Sea Doo 255hp jet skis • 3 x Sea Doo snorkeling scooters • Complete scuba equipment • Full set of water toys • 2 x kayaks • 2 x mountain bikes • Custom on-demand online DVD/video/audio system • Treadmill and workout equipment

Exclusions

Owner's personal belongings.

Disclaimer

The Company offers the details of this vessel or yacht in good faith but cannot guarantee or warrant the accuracy of this information nor warrant the condition of the vessel. A buyer should instruct his representatives, agents, or his surveyors, to investigate such details as the buyer desires validated. This vessel or yacht is offered subject to prior sale, price change, or withdrawal without notice.

PHOTOS

Running



Dining

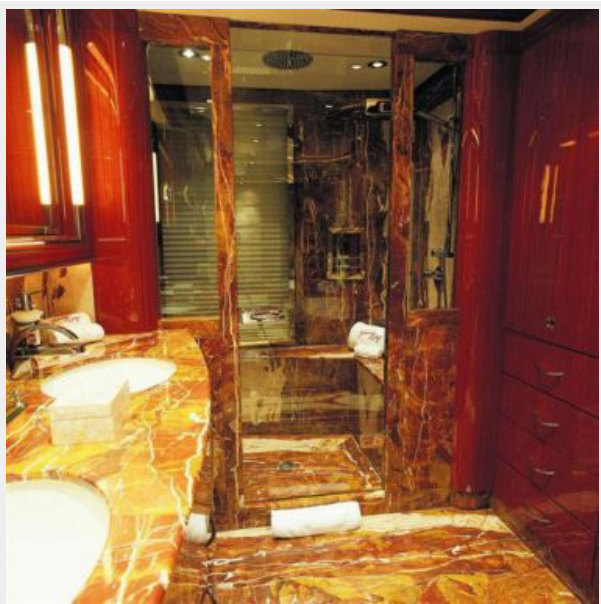




Master SR



Master Bath



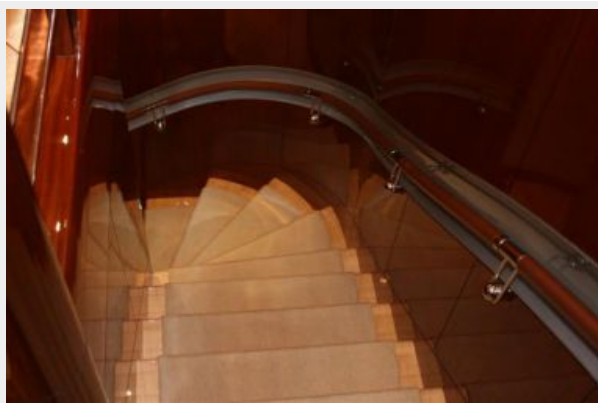
Master Stateroom



Guest SR



Theater/Lounge





Sun Deck



decks



At Anchor



Cruising



CONTACTS

Andrey Shestakov, leading yacht broker of the sales department of Shestakov Yacht Sales Inc. Shestakov Yacht Sales Inc., the official representative of the Miami/Fort Lauderdale FL headquarters.

Contact details

Email: andrey@shestakovyachtsales.com

Web: shestakovyachtsales.com/en/

Telephones

USA: +1(954)274-4435

Office hours

Monday – Saturday: **9:00 - 21:00** EDT

Sunday: **closed**

Address



Harbour Towne Marina, 850 NE 3rd St,
STE 213, Dania, FL 33004