

MY THAI — JEFFERSON



Builder: JEFFERSON

Year Built: 1990

Model: Motor Yacht

Price: PRICE ON APPLICATION

Location: United States

LOA: 52' 0" (15.85m)

Beam: 16' 0" (4.88m)

Min Draft: 4' 0" (1.22m)

Cruise Speed: 17 Kts. (20 MPH)

Max Speed: 21 Kts. (24 MPH)

Our experienced yacht broker, Andrey Shestakov, will help you choose and buy a yacht that best suits your needs **My Thai — JEFFERSON** from our catalogue. Presently, at Shestakov Yacht Sales Inc., we have a wide variety of yachts available on our sale's list. We also work in close contact with all the big yacht manufacturers from all over the world.

If you would like to buy a yacht **My Thai — JEFFERSON** or would like help answering any questions concerning purchasing, selling or chartering a yacht, please call **+1(954)274-4435**

TABLE OF CONTENTS

TABLE OF CONTENTS	2
SPECIFICATIONS	3
Basic Information	3
Dimensions	3
Speed, Capacities and Weight	3
Accommodations	3
Hull and Deck Information	3
Engine Information	4
DETAILED INFORMATION	5
Saloon	5
Equipment Room	5
Fly Bridge	5
Galley/Dining	6
Forward Stateroom	6
Master Stateroom	6
Pilothouse	7
Exclusions	7
Disclaimer	7
PHOTOS	8
CONTACTS	12
Contact details	12
Telephones	12
Office hours	12
Address	12

SPECIFICATIONS

Basic Information

Category: Motor Yacht

Sub Category: Liveaboard

Model Year: 1990

Year Built: 1990

Country: United States

Dimensions

LOA: 52' 0" (15.85m)

Beam: 16' 0" (4.88m)

Min Draft: 4' 0" (1.22m)

Clearance: 23' 0" (7.01m)

Speed, Capacities and Weight

Cruise Speed: 17 Kts. (20 MPH)

Max Speed: 21 Kts. (24 MPH)

Displacement: 55800 Pounds

Water Capacity: 200 Gallons

Holding Tank: 45 Gallons

Fuel Capacity: 730 Gallons

Accommodations

Total Berths: 1

Sleeps: 1

Total Heads: 1

Crew Berths: 1

Crew Sleeps: 1

Crew Heads: 1

Hull and Deck Information

Hull Material: Fiberglass

Engine Information

Engines: 2

Manufacturer: Detroit Diesel

Model: 6V92TA

DETAILED INFORMATION

Saloon

The saloon has Italian Leather upholstered wrap around couch that makes into a Queen size bed and has a recliner on the other end. There are two chairs, one recliner and the other an easy chair, also in Italian Leather upholstery. The table serves as a coffee table and can be raised to function as a cocktail table during parties. The door leading out on the starboard side leads to a enclosed line handling deck that can be used as an additional room for coffee or cocktails, depending on the desires of the Captain or First Mate and the time of the day. Looking forward, toward the pilot house, the saloon has a wet bar, refrigerator and icemaker, stereo receiver, DVD/CD player and new Samsung flat screen TV. The refrigerator was purchased new in the last year. There is storage for bar supplies and other incidentals

Equipment Room

Below the Galley Sole is the equipment room that contains the compressor units for all (four each) air conditioner/heat pumps for the vessel, a 200 gallon/day water maker, 20 gallon hot water tank, and electrical implements consisting of a 15Kw Westerbeak (4501 hours) and a 8Kw KiloPak (3651 hours) generators. The water pump of the 8Kw Generator was replaced two years ago with an off the shelf unit. Both units provide 220vac power to run the boat on those long cruises, although the 8Kw will run the boat fine if you can keep your mate from using the dryer and oven. Down two steps to the aft on the port side is the stacked washer and dryer that keeps all of your clothes feeling good and fit. Immediately aft of the washer/dryer combination is the amid ship head and shower combination. The toilet is a vacuum toilet and evacuates directly to the holding tank located under the equipment room discussed earlier. Across the passageway from the head is the Guest Stateroom that features a Queen size bed with closet and individual air condition and heating controls. Also located here is an analog TV set. At the head of the Queen size bed is a access panel for the condenser unit for the AC and Galley appliances. Under the Queen Bed is ample storage for those things that are not needed for daily use. Continuing aft down the passage way are the engine rooms for the Detroit Diesels that makes the MY Thai move through the water on a leisurely cruise. Here are also are the two 217 gallon saddle tanks with sight gages for fuel determination, access to the Hydraulic controls for the shifters and throttles, oil change pump for the engines and generators, and easy access to the various filters that make the boat move through the water. For easy access to the engines there are removable panels on both sides of the passageway. Also located below the sole of the passage was are the two 100 gallon water tanks, fresh water pumps for the air conditioners and two 8d batteries that furnish power to the engines and the 12vdc house system.

Fly Bridge

Located on the Fly Bridge are the controls for the engines, auto pilot, Raytheon GPS and 2 VHF radios, as well as the controls for the 12vdc spotlight and 110vac searchlight, that will light up your path for at least ½ mile and probably further. Additionally under the console are the condensers for the Saloon/pilot house air conditioner and compressor and air tank for the 120db air horn located on starboard side of fly bridge. Compasses are located in the fly bridge and the Pilot House. The Captains chair is located on the fly bridge, as well as the First Mate's chair to the aft, so all can see well! In the after part of the fly bridge is the ice maker (new in 2008) and a sink and faucet. There is ample storage for what ever you need under the seats that are on both sides of Fly Bridge and under the console. Going aft from the Fly Bridge is an open deck that contains the 11'9" RIB rubber boat and 15 hp Yamaha outboard engine. Also located on the Port Side is a 1500 pound electric davit. On the arch are the antennas for the radar and GPS, running/anchor lights, and KVH C3 Sat. Antenna. Down three steps is located the galley and forward of this is the forward stateroom with larger than normal two bunk beds, chain locker behind the mirror

Galley/Dining

To the port side of the Galley area is the "L" shaped dinning seating with table that folds down for storage or can be made into an additional bunk. The Galley is outfitted with a four burner electric stove, microwave, double sink, dishwasher, garbage disposal and full size refrigerator/ice maker. The Galley has a separate Air Conditioner/Heat Pump with separate analog controls.

Forward Stateroom

Also located here is a toilet on the Port Side and a Shower on the Starboard Side. Located below the lower bunk is the air conditioner/heat pump unit for the climate control of the forward Stateroom.

Master Stateroom

The Master Stateroom features a Queen Size bed, ample cabinet space for storage of clothes on long cruises. Also featured is its own air conditioning/heat pump unit with digital controls. Immediately off the master stateroom, on the starboard side, is a full head with vacuum toilet, bath tub and lavatory. For the Mate there is a full closet, however the Captain is limited to a small closet. The entertainment system consists of speakers for the stereo system in the Saloon and a analog TV with converter box for digital channels. On either side of the bed are located access to the rudders and rudder system indicators. Also located on the port side of the master stateroom is the pump for the trim tab system that is a part of the My Thai. The My Thai is currently docked at Island Harbor Marina, Pine Bluff, Arkansas on the Arkansas River. She has been under cover for most of the time the present owners have had her and is ready to go cruising either in the inland river system or in blue water, which ever the future owners' desire. The My Thai also features a

Dan forth anchor with electrical windless, shore electrical cables, Dish system receiver, barbeque cooker, numerous lines and cleaning materials and some tools that are specifically applicable to the vessel.

Pilothouse

In the Pilot House all engine controls, radio and navigation instruments are available. They include a Furano 1650d plotter, GPS, 48 mile Furano radar, two handheld VHF radios, fixed VHF radio, Auto Pilot with remote control unit, storage for navigation charts and other papers pertaining to the vessel and is separated from the saloon by a etched glass panel by a know Florida artist. Controls are mounted on the starboard cover to the wiring race that controls the KVH C3 Sat antenna and remote handset for the VHF radio on the Flying Bridge. In the overhead panel of the Pilot House are the digital control for the Saloon/Pilot House air condition and the two GPS units, as well as, speakers for the stereo system and barometer and clock with Tide information. Below the console is the condenser unit for the Galley Air conditioner, 12vdc electrical panel and the master control for the telephone system within the boat. On the starboard side of the Pilot House is the stairway leading up to the flying bridge, which is enclosed with a full enclosure.

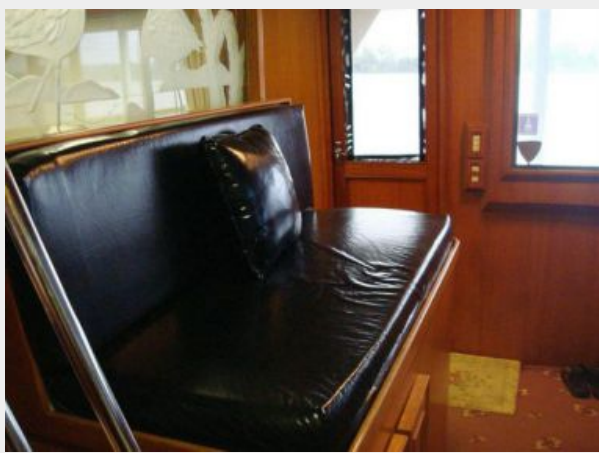
Exclusions

Owner's personal belongings.

Disclaimer

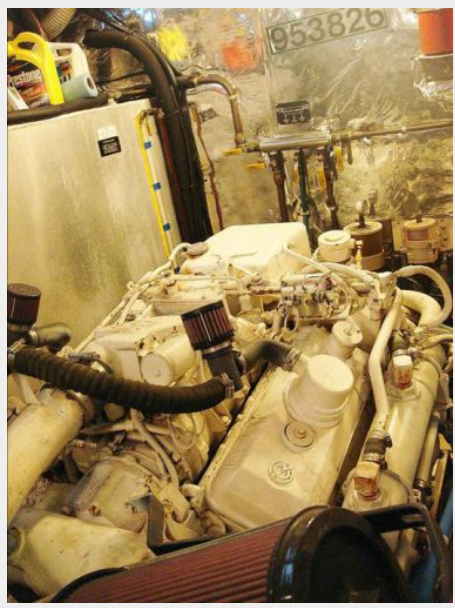
The Company offers the details of this vessel or yacht in good faith but cannot guarantee or warrant the accuracy of this information nor warrant the condition of the vessel. A buyer should instruct his representatives, agents, or his surveyors, to investigate such details as the buyer desires validated. This vessel or yacht is offered subject to prior sale, price change, or withdrawal without notice.

PHOTOS









CONTACTS

Andrey Shestakov, leading yacht broker of the sales department of Shestakov Yacht Sales Inc. Shestakov Yacht Sales Inc., the official representative of the Miami/Fort Lauderdale FL headquarters.

Contact details

Email: andrey@shestakovyachtsales.com

Web: shestakovyachtsales.com/en/

Telephones

USA: +1(954)274-4435

Office hours

Monday – Saturday: **9:00 - 21:00** EDT

Sunday: **closed**

Address



Harbour Towne Marina, 850 NE 3rd St,
STE 213, Dania, FL 33004