

## HOT TOMALE II — GRAND BANKS



**Builder:** GRAND BANKS

**Year Built:** 1981

**Model:** Trawler

**Price:** PRICE ON APPLICATION

**Location:** United States

**LOA:** 49' 0" (14.94m)

**Beam:** 15' 5" (4.70m)

**Min Draft:** 5' 2" (1.57m)

Our experienced yacht broker, Andrey Shestakov, will help you choose and buy a yacht that best suits your needs **Hot Tomale II — GRAND BANKS** from our catalogue. Presently, at Shestakov Yacht Sales Inc., we have a wide variety of yachts available on our sale's list. We also work in close contact with all the big yacht manufacturers from all over the world.

If you would like to buy a yacht **Hot Tomale II — GRAND BANKS** or would like help answering any questions concerning purchasing, selling or chartering a yacht, please call **+1(954)274-4435**

---

# TABLE OF CONTENTS

---

TABLE OF CONTENTS	2
SPECIFICATIONS	3
Basic Information	3
Dimensions	3
Speed, Capacities and Weight	3
Accommodations	3
Hull and Deck Information	3
Engine Information	4
DETAILED INFORMATION	5
ACCOMMODATIONS AND LAYOUT	5
DECK AND HULL	5
MECHANICAL AND ENGINE EQUIPMENT / ROOM	6
ELECTRONICS AND NAVIGATION EQUIPMENT	8
ELECTRICAL SYSTEM	9
FISHING EQUIPMENT	10
Exclusions	10
Disclaimer	10
PHOTOS	11
CONTACTS	13
Contact details	13
Telephones	13
Office hours	13
Address	13

---

# SPECIFICATIONS

---

## Basic Information

---

**Category:** Trawler

**Sub Category:** Double Cabin

**Model Year:** 1981

**Year Built:** 1981

**Country:** United States

## Dimensions

---

**LOA:** 49' 0" (14.94m)

**Beam:** 15' 5" (4.70m)

**Min Draft:** 5' 2" (1.57m)

## Speed, Capacities and Weight

---

**Gross Tonnage:** 49 Pounds

## Accommodations

---

**Total Berths:** 1

**Sleeps:** 1

**Total Heads:** 1

**Crew Berths:** 1

**Crew Sleeps:** 1

**Crew Heads:** 1

## Hull and Deck Information

---

**Hull Material:** Fiberglass

---

## Engine Information

---

**Engines:** 2

**Manufacturer:** Luger

**Model:** L6125/KCBT

**Engine Type:** Inboard

**Fuel Type:** Diesel

---

# DETAILED INFORMATION

---

## ACCOMMODATIONS AND LAYOUT

---

Commencing forward is the guest stateroom with full hanging lockers, storage drawers, and a full head to port. Adjacent from the head is two berth stateroom with hanging lockers, storage drawers, washer and dryer.

Three steps up leads to the galley with three burner electric stove with oven, microwave, and single stainless steel sink. The salon is fitted with one couch, wet bar and a table. The lower helm is on the starboard forward side with an access door leading to the main deck.

The master's stateroom is three steps down center aft salon bulkhead. The master's stateroom has a queen size bed with storage lockers and drawers to port and starboard and a full head in the starboard forward side.

Two (2) 12 volt Galley Maid marine toilets discharging via two adequate size holding tanks fitted with Y valves, macerators, and thru-hulls for off shore discharge only. The showers are fitted with Rule 360 GPH shower sumps.

## DECK AND HULL

---

P.F.D.'s: Seventeen (17) type I

RING BUOY: One (1) Yes  
FIRST AID KIT: Yes

CHARTS: Yes

SAFETY RAILS: 27 to 28 inches around the perimeter of the fly bridge deck and 32" around the main deck.

ALARMS: Water temp, oil pressure, fire and carbon monoxide.

EMERGENCY SHUT DOWN: Yes, at lower helm

## GROUND TACKLE

ANCHOR TYPE AND SIZE: One (1) Danforth number 45 fluke type in anchor davit.

CHAIN AND ROPE: 1/4" chain and an adequate amount of 1 1/2" nylon rope.

SPARE ANCHOR: One (1) # 22 Super Hooker.

ANCHOR STORAGE: Inside pulpit on bow deck.

ANCHOR WINDLASS: One (1) 12 volt Galley Maid with controls at the helm and foredeck.

### **DECK AND HULL:**

The MN Hot Tomale II is a year 1981, all fiber, re-enforced plastic (FRP) constructed vessel with twin diesel engines, a generator, three staterooms, two full heads, galley and salon combination, and a fly bridge. The vessel has been issued a U. S. C. G. Certification of Documentation with admeasured dimensions, name, and hailing port.

### **HULL AND SUPERSTRUCTURE**

HULL & DESIGN: FRP., Semj displacement

FLOORS: Teak Parquet DECKS: Teak

---

## **MECHANICAL AND ENGINE EQUIPMENT / ROOM**

---

### **MECHANICAL/ENGINE ROOM:**

All of the below waterline through-huH fittings are bronze fitted with stainless steel ball valves fitted with bronze sea strainers.

### **PROPULSION**

ENGINE MAKE: Two (2): Luger diesel engines.

MODEL: L6125/KCBT

HORSE POWER: Reported 460 each, 920 total

DATE INSTALLED: 1996

HOUR METER READING: 5920 hrs

REDUCTION GEAR MAKE: ZF, model IRM31 OPL

COOLING: Fresh water with heat exchanger: raw water intakes are fitted with Groco bronze type sea strainers.

ALARMS: Low oil pressure, high engine temperature, gear pressure, and heat sensors in engine room.

EXHAUST SYSTEM: Wet-lead out transom through approved type exhaust piping, fitted with approved-type silencers 12 Volts I Tom two (2) banks of one (1) 4-D storage battery each through solenoid, located center aft in machinery space fitted with approved type cut-off switches.

STARTING SYSTEM: 12 Volts I Tom two (2) banks of one (1) 4-D storage battery each through solenoid, located center aft in machinery space fitted with approved type cut-off switches.

ENGINE CONTROLS: Dual lever mechanical Morse controls, one station on fly bridge and one station in salon.

GAUGES: Water temperature, oil pressure, gear oil pressure, RPM, amps and fuel.

ENGINE ROOM VENTILATION: One (1) 12 volt blower in engine room.

PROPELLERS: Bronze, 30" x 26" pitch, 4 blade, bronze

SHAFTS: 2" Stainless

## **BILGE PUMPS**

NUMBER & TYPE:

Three (3) 12 volt Rule 2000 gph, one (1) forward, one (1) in engine room, and one (1) aft all equipped with automatic float switches. The vessel is fitted with one (1) Edson manual disaster pump located in the engine room.

## **FUEL**

NUMBER OF TANKS: Two (2)

MATERIALS: Steel

LOCATIONS: Port and starboard sides in engine room.

TOTAL CAPACITY: 1034 gallons

FEED LINES: Approved type hose

STOP VALVES: At fuel filters.

FILTERS & WATER TRAPS: Racor 900 MA at each engine.

FILL CONNECTIONS: Through chrome plated bronze fill plates in port and starboard side deck through U, S. C. G. approved type hose.

---

## ELECTRONICS AND NAVIGATION EQUIPMENT

---

### ELECTRONICS:

RUNNING LIGHTS: Meet U. S. C. G. regulations.

FOG BELL: None Sighted

HORN: Dual electric COMPASS: One (1) Danforth 5" on fly bridge

SATELLITE NAVIGATOR/SOUNDER: One (1) Furuno I850DF.

AUTO PILOT: One (1) Wood Freeman model 500 with remote on fly bridge.

SEARCH LIGHT: One (1) Hand held.

RADIO TELEPHONES: SOUNDER: One (1) Standard Horizon on bridge. DEPTH One (1) Datamarine Offshore depth

KNOT METER: One (1) Datamarine Navigator

RADAR: Two (2): one (1) Raytheon model RIO, 24 mile on bridge, and one (~~.LLC-l>-ZA-mile oo-4ly-bfidge.



PILOT CHAIRS: Two (2) pilot and watch chairs.

## ELECTRICAL SYSTEM

---

### ELECTRICAL AUXILIARY GENERATORS

MAKE: One (1 )Northern Lights 20KW

MODEL: M8542 OM

DATE INSTALLED: 1996

HOURS: Estimated 6000 hrs.

COOLING SYSTEM: Fresh water with heat exchanger: raw water intakes are fitted with bronze type sea strainers.

STARTING SYSTEM: 12 Volts from ship's storage battery.

EXHAUST SYSTEM: Wet-led out side shell through approved type piping fitted with aqua lift type *muffler*.

FUEL SOURCE: Diesel, from one fuel storage tank through U.S.CG. approved type fuel hose fitted with Racor 500MA filter/water separator with shut-off valves.

WIRING DESCRIPTION: Factory wiring harness and distribution panel with 120 volts AC, 12 volt DC, and amp meters.

OVERLOAD PROTECTION: 120 Volt AC and 12 volt DC circuit breakers.

SHORE TIE: Two (2) 50 AMP 125 volt, 6/4 50' shore cords with inlets in port and starboard side mid ship of superstructure.

CHANGE-OVER CONTROL: On starboard side at lower helm in salon.

BATTERY CHARGING: From alternators on main engines and from one (1) Sentry, 12 volt, 40 amp battery charger.

---

## FISHING EQUIPMENT

---

### FISHING EQUIPMENT:

Rod holders: Four (4)

---

## Exclusions

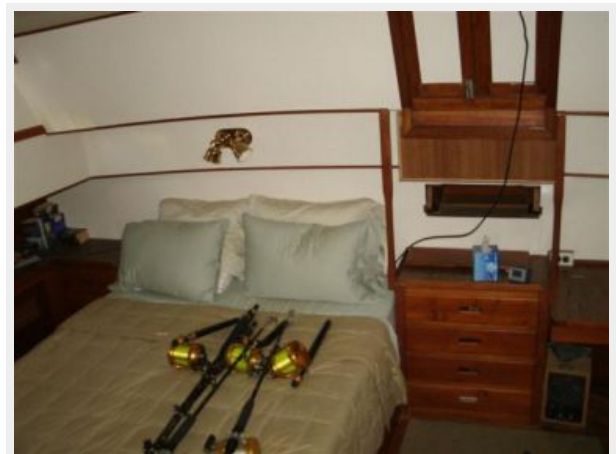
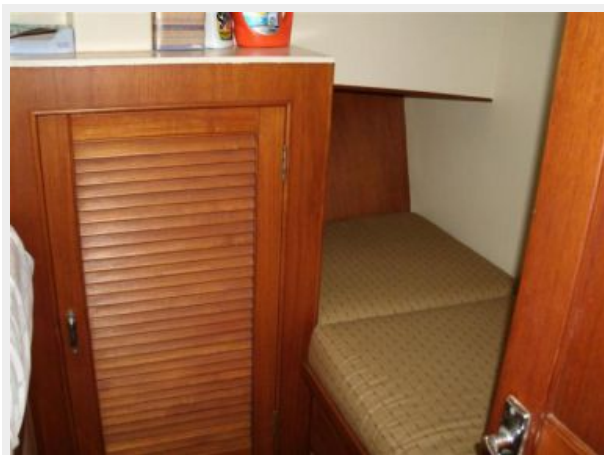
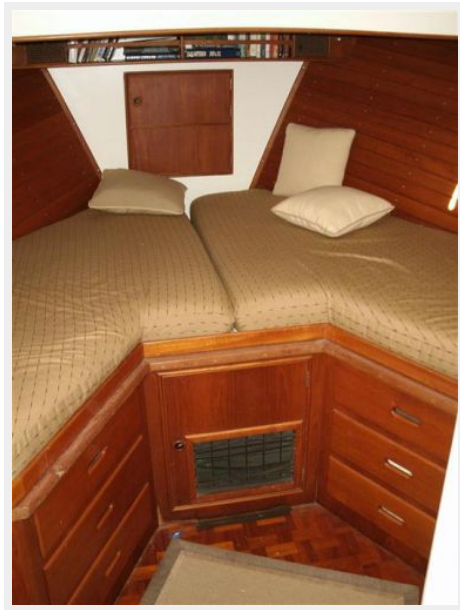
Owner's personal belongings.

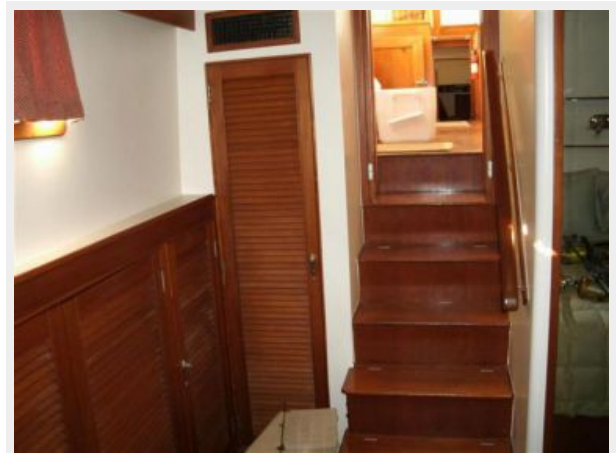
---

## Disclaimer

The Company offers the details of this vessel or yacht in good faith but cannot guarantee or warrant the accuracy of this information nor warrant the condition of the vessel. A buyer should instruct his representatives, agents, or his surveyors, to investigate such details as the buyer desires validated. This vessel or yacht is offered subject to prior sale, price change, or withdrawal without notice.

# PHOTOS





# CONTACTS

---

Andrey Shestakov, leading yacht broker of the sales department of Shestakov Yacht Sales Inc. Shestakov Yacht Sales Inc., the official representative of the Miami/Fort Lauderdale FL headquarters.

## Contact details

---

Email: [andrey@shestakovyachtsales.com](mailto:andrey@shestakovyachtsales.com)

Web: [shestakovyachtsales.com/en/](http://shestakovyachtsales.com/en/)

## Telephones

---

USA: +1(954)274-4435

## Office hours

---

Monday – Saturday: **9:00 - 21:00** EDT

Sunday: **closed**

## Address

---



Harbour Towne Marina, 850 NE 3rd St,  
STE 213, Dania, FL 33004