

## ANTARA — PERINI NAVI



**Builder:** PERINI NAVI

**Year Built:** 1991

**Model:** Cruising Sailboat

**Price:** PRICE ON APPLICATION

**Location:** Turkey

**LOA:** 152' 0" (46.33m)

**Beam:** 30' 0" (9.14m)

**Min Draft:** 11' 0" (3.35m)

**Max Draft:** 23' 0" (7.01m)

**Cruise Speed:** 10 Kts. (12 MPH)

**Max Speed:** 13 Kts. (15 MPH)

Our experienced yacht broker, Andrey Shestakov, will help you choose and buy a yacht that best suits your needs **ANTARA — PERINI NAVI** from our catalogue. Presently, at Shestakov Yacht Sales Inc., we have a wide variety of yachts available on our sale's list. We also work in close contact with all the big yacht manufacturers from all over the world.

If you would like to buy a yacht **ANTARA — PERINI NAVI** or would like help answering any questions concerning purchasing, selling or chartering a yacht, please call +1(954)274-4435

# TABLE OF CONTENTS

TABLE OF CONTENTS	2
SPECIFICATIONS	4
Basic Information	4
Dimensions	4
Speed, Capacities and Weight	4
Accommodations	4
Hull and Deck Information	5
Engine Information	5
DETAILED INFORMATION	6
Construction	6
Dimensions	6
Sails and Rigging	6
Engine /Mechanical Equipment	7
Electronics and Navigational Equipment	7
Galley	9
Laundry Room	9
Tenders and Toys	9
Deck Equipment	10
Safety And Fire Protection	10
Accommodations	11
Broker's Comments	11
Features	12
Exclusions	12
Exclusions	13
Disclaimer	13
PHOTOS	14
CONTACTS	17
Contact details	17

Telephones	17
Office hours	17
Address	17

# SPECIFICATIONS

## Basic Information

Category: Cruising Sailboat	Model Year: 1991
Year Built: 1991	Refit Year: 2015
Refit Type: Extensive	Country: Turkey

## Dimensions

LOA: 152' 0" (46.33m)	Beam: 30' 0" (9.14m)
Min Draft: 11' 0" (3.35m)	Max Draft: 23' 0" (7.01m)
MFG Length: 152' 0" (46.33m)	

## Speed, Capacities and Weight

Cruise Speed: 10 Kts. (12 MPH)	Cruise Speed Range: 4500
Max Speed: 13 Kts. (15 MPH)	Gross Tonnage: 302 Pounds
Water Capacity: 3400 Gallons	Fuel Capacity: 11000 Gallons

## Accommodations

Total Cabins: 4	Total Berths: 8
Sleeps: 12	Total Heads: 5
Captain Cabin: True	Crew Cabin: 4
Crew Berths: 9	Crew Sleeps: 8
Crew Heads: 4	

---

## Hull and Deck Information

---

**Hull Material:** Steel

**Deck Material:** Teak and Steel

**Hull Designer:** Perini Navi

**Exterior Designer:** Perini Navi

**Interior Designer:** Perini Navi

---

## Engine Information

---

**Engines:** 2

**Manufacturer:** MTU

**Model:** 12V 183 TE91

**Engine Type:** Inboard

**Fuel Type:** Diesel

---

# DETAILED INFORMATION

---

## Construction

---

Built as Liberty in 1991 by Perini Navi with steel hull, aluminum superstructure, and teak deck over steel. Hull, topsides and superstructure completely painted 2016.

## Dimensions

---

Length Overall:	152 feet (46.32 meters)
Beam:	30.20 feet (9.20 meters)
Draft:	11 feet (3.35 meters)
Tonnage:	302 gross tons
Fuel Capacity:	11,000 US Gallons (41,635 liters)
Water Capacity:	3,400 US Gallons (12,869 liters)
Wastewater:	792 US Gallons (2,997 liters)
Speed Under Sail:	Maximum: 14.0 knots
Engine Speed:	Maximum: 12.0 knots; Cruising: 10.0 knots

## Sails and Rigging

---

Rig:	Ketch - All running and standing rigging was inspected in 2015 and replaced or re-headed as necessary. New spreader tip cups 2015.
Masts:	Main - 4 spreader aluminum, stripped & painted 2016 Mizzen - 3 spreader aluminum, stripped & painted 2016
Sail Wardrobe:	5 North Sails
Sail Handling:	Stoway Masts hydraulic power packs, captive reel winches removed/serviced 2016, 5 Bamar hydraulic roller furlers refurbished in 2016 - headstay, staysail and fisherman main and mizzen.

---

## Engine /Mechanical Equipment

---

### Main Engines:

Engine Type: (2) MTU 12V 183 TE91 @ 640 Hp each

Gearboxes for Main Engines: Twin disc Ratio 4:52/1

Drive: Props CP  
Serviced 2013

### Generator & Electricity:

Output: 220 volts, 3-Phase, 50 Hz

Generators: (2) 80 Kw Northern Lights, 4200 hours, new 2013

Generator Shore Power: 220 volts/1-Phase & 3-Phase/50 Hz

Shore Power Conversion System: Atlas 40 Kw - Upgraded 2011

Batteries: Main Engine: (2) 24V Gel; new 2016  
Generator: (2) 24V Gel; new 2016  
General Service: (12) 2V Gel; new 2016  
Emergency: 12 x 2V Gel; new 2016  
Entertainment: run via UPS's

Air Conditioning: AC plant upgraded with new Nov 2016

### Other Machinery:

Watermakers: (2) Hem 12000 reconditioned with new membranes 2016

Bow Thruster: Schottel Sttiolk 50 Kw

Fuel Filtration: Alfa Laval MAB 103B - 24, fully serviced 2016

Bilge Water Filtration: (2) Gianneschi & Ramaccitti  
New Bilge Pumps 2011

Refrigeration: (2) New compressors, manifold, and plumbing in pump room

Ships Alarm & Monitoring System New 2016

---

## Electronics and Navigational Equipment

---

### Communication

#### Systems:

SATcom: F77 KVH, Mini M and V-Sat

Telephone System: 2 lines 5 extensions

Intercom:	5 stations
SSB:	Furuno
VHF:	Furuno FM-8800
Fixed:	Scanti 3000
Handheld:	(6) Standard
Cellular Phone System:	Seatel
Telefax: Onboard WiFi	SAT-C 4G Near Shore / V-SAT Offshore

**Navigation Systems:**

Radar:	Furuno, Range 96 miles
Gyrocompass:	C-Plath - New 2011
Compass:	Magnetic
Auto Pilot:	C-Plath Nav Pilot
Depth Sounder:	Echotec
GPS:	Northstar 952 with repeater on flybridge Northstar 6000 I with chart plotter
Ship's Printer:	HP 3180 and HP F4180
Plotter Software:	Nobletech Max Pro (new software November 2009)
Wind/Speed Log:	B&G (5) Analog B&G (3) FFD
Navtex:	Furuno NX-700
AIS:	Simrad

**Entertainment System:****Video Equipment:**

TV's:	50" NEC flatscreen (Salon) 40" Northern Star flatscreen (Master) 18" Samsung flatscreen (Master Study) 3 x 26" LG flatscreen (Guest staterooms) 50" flatscreen (Aft deck) Panasonic (Captain's cabin) Sony (Crew mess)
-------	--



DVD and CD players: 7 x NAD players, all guest areas

Audio/Visual  
Equipment: Roku (Master)

iPod Stations: CCTV All staterooms & main salon (4) Remote panning/zooming cameras:  
Samsung Engine Room (2), Mizzen Mast (2)

## Galley

Cooking Equipment: Range: Smeg 4 burner  
Oven: (2) Miele

Refrigeration/Freezer: Stainless steel 4 boxes & 6 drawers

Dishwasher: Barrata

Other: Microwave  
Icemaker

Additional Equipment: Icemaker (Salon bar & aft pantry)  
Refrigeration (Salon bar)  
Wine cooler (Salon Bar & aft pantry)  
Dishwasher (Aft pantry)  
Miele coffee maker (Aft pantry)  
Water heater (new 2016)

## Laundry Room

All equipment located in the Laundry section

Main Laundry Equipment: Washer: Miele WS5427  
Dryer: Miele T5206

2nd Laundry Equipment: Washer: Miele SW5427  
Dryer: Miele PT7136

## Tenders and Toys

Main  
Tender: 5.5 m Ribtech 2015

2nd  
Tender: 5.5 m Ribtech 115 HP 4 stroke Yamaha 2015

Other: Bauer dive compressor Snorkeling equipment available Jacuzzi Spa for 6 people (Flybridge aft), new 2007 Gym available. Exercise room adjacent to Owner's suite via hidden door includes exercise bike. Steam shower (Owner's ensuite) (2) Blade Fish (Sea Bobs) (2) Kayaks Laser Waterskis Wakeboard

## Deck Equipment

Anchor Windlass System:	Nanni - horizontal (completely overhauled 2016)
Anchors:	2 x 500 Kg galvanized with stainless bottom
Anchor Chain:	2 x 120m x 24mm galvanized stud link (New link & swivel 2011)
Deck Capstans:	2 x Harken 1120's (Aft deck)
Side Accommodation Ladders:	Perini Navi hydraulic (removed & serviced 2016)
Stern Boarding Gangway:	Custom Mar Saverio hydraulic (removed & serviced 2016)
Other:	Stern passerelle can drop and act as boarding or swimming platform from the transom (new 2007)

## Safety And Fire Protection

Fire Fighting Equipment:

Fire Novek 1230 System: (1) - Engine Room

Fire Extinguishers: (27) - Various

Asbestos Firefighting Suit: (2) - Fire Locker

Safety Equipment:

Life Rafts: 2 x 12 man RFD (Foredeck)

1 x 12 man RFD (Flybridge)

EPIRBS:	406 mHZ
Flares	Yes
Other:	Sart transponder
Life Rings:	2

---

## Accommodations

---

The interior is laid out to sleep a maximum of twelve (12) guests. There are three (3) guests' staterooms plus a master stateroom. The two (2) forward guests' staterooms have the possibility of sleeping four (4) each, as there are two (2) Pullman bunks in each. There is a possibility to sleep eight (8) crew in the four (4) crew cabins forward. Crew's Quarters: The crew's quarters are accessed from the forward deck hatch, or from the dining salon stairway. There are port and starboard cabins forward and captain and engineers cabin starboard side. On the port side forward there is a walk-in freezer and then the crew mess and then the main galley. There is a large galley with U-shaped counter top. It has a fold down pass-through area. Cabin soles are vinyl and the counters are stone. The crew's area is done in teak with teak cabin soles. Main Deck: The main deck has the dining salon forward to port and a bar to starboard with starboard side passageway. The main salon is aft. The joiner work is all teak and the cabin sole is fully carpeted.

Aft Accommodations: The aft area is accessed from the main stairway in the dining salon. There is also a private entrance to the owner's stateroom from the base of the mizzen mast. This is also an escape route to the deck and continues up to the flybridge.

There are port and starboard identical guest cabins forward with two (2) double berths and two pullmans above. Aft there is a port side VIP guest cabin with queen berth and the rest of the lower accommodations are taken up by the Owner's suite with starboard side study and a large master stateroom which has been fitted with a new gym.

All joiner work is teak. The cabin soles are teak. The heads have marble soles.

Wheelhouse: The wheelhouse is well laid out having good access to controls, electronics and all gear and equipment. Outboard to port and down steps is the captain's office which has a settee which doubles as a sleeping berth. A companionway provides access to the flybridge.

---

## Broker's Comments

---

Antara is a beautiful example of the highly successful 46 meter Perini Navi design featuring the traditional and very functional raised pilothouse. It is rare to find a 46 meter sailing yacht that offers more accommodation and comfort. Her timeless design featuring long overhangs, sweeping lines and open deck spaces is compelling, but don't be fooled by her classic looks. She is a supremely accomplished sailing vessel, and has won silverware at every regatta she has entered including the St. Barths Bucket, Palma Superyacht Cup, and Perini Navi Cup, sailing against some of the most accomplished mega sailing yachts on the planet. In 2015/16 Antara completed an extremely comprehensive refit where nearly every aspect of her machinery, interior and exterior was upgraded. Just a few of the highlights include hull audio gauged, topsides, masts and superstructure painted, all winches and furlers removed and serviced, running and standing rigging inspected and replaced as necessary. Interior and exterior lighting upgraded to LED. During this yard period Antara also completed her 25 year ABS survey and comprehensive mechanical refit as part of a multi-million dollar upgrading. A complete list of work is available upon request.

---

## Features

---

Please see for additional photos.

---

## Exclusions

---

**Exclusions** include all of Owner's personal effects.

All speeds, capacities, consumption, etc. are approximate or estimated; measurements can also be approximate. Specifications are provided for information only and particulars herein obtained from sources believed to be correct, but are not guaranteed. Buyer should instruct his agent and/or surveyor to check all details for accuracy. Offered subject to prior sale, price and/or

inventory change, or withdrawal from the market without notification.

## Exclusions

---

Owner's personal belongings.

## Disclaimer

---

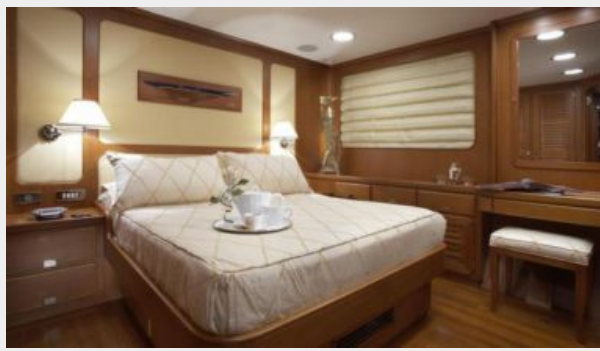
The Company offers the details of this vessel or yacht in good faith but cannot guarantee or warrant the accuracy of this information nor warrant the condition of the vessel. A buyer should instruct his representatives, agents, or his surveyors, to investigate such details as the buyer desires validated. This vessel or yacht is offered subject to prior sale, price change, or withdrawal without notice.

# PHOTOS











# CONTACTS

---

Andrey Shestakov, leading yacht broker of the sales department of Shestakov Yacht Sales Inc. Shestakov Yacht Sales Inc., the official representative of the Miami/Fort Lauderdale FL headquarters.

## Contact details

---

Email: **andrey@shestakovyachtsales.com**

Web: [shestakovyachtsales.com/en/](http://shestakovyachtsales.com/en/)

## Telephones

---

USA: **+1(954)274-4435**

## Office hours

---

Monday – Saturday: **9:00 - 21:00 EDT**

Sunday: **closed**

## Address

---



Harbour Towne Marina, 850 NE 3rd St,  
STE 213, Dania, FL 33004