

ODYSSEY — MAINSHIP



Builder: MAINSHIP

Year Built: 1993

Model: Motor Yacht

Price: PRICE ON APPLICATION

Location: United States

LOA: 40' 0" (12.19m)

Beam: 13' 6" (4.11m)

Min Draft: 3' 5" (1.04m)

Max Draft: 3' 5" (1.04m)

Cruise Speed: 21 Kts. (24 MPH)

Max Speed: 28 Kts. (32 MPH)

Our experienced yacht broker, Andrey Shestakov, will help you choose and buy a yacht that best suits your needs **Odyssey — MAINSHIP** from our catalogue. Presently, at Shestakov Yacht Sales Inc., we have a wide variety of yachts available on our sale's list. We also work in close contact with all the big yacht manufacturers from all over the world.

If you would like to buy a yacht **Odyssey — MAINSHIP** or would like help answering any questions concerning purchasing, selling or chartering a yacht, please call **+1(954)274-4435**

TABLE OF CONTENTS

TABLE OF CONTENTS	2
SPECIFICATIONS	4
Basic Information	4
Dimensions	4
Speed, Capacities and Weight	4
Accommodations	4
Hull and Deck Information	5
Engine Information	5
DETAILED INFORMATION	6
Overview	6
Main Cabin Accommodations	6
Galley	6
Electronics and Navigational Equipment	6
Engine /Mechanical & Electrical Equipment	7
Hull and Deck	7
Optional Equipment	7
Exclusions	7
Disclaimer	8
PHOTOS	9
Windlass	9
Foredeck aft	9
Helm View w/ Enclosure	9
Helm Electronics	9
Bridge / Foredeck access	10
Bridge Wet-Bar	10
Salon Dinette	10
Galley	10
Salon Entertainment Center	11

Starboard Lounge	11
Master Stateroom	11
VacuFlush Head	11
Head Med/Cabinet	12
Head Med/Cabinet 2	12
Head / Shower Stall	12
Guest Stateroom	12
Port 315HP Yanmar (1740 Hrs.)	13
Starboard 315HP Yanmar	13
Yanmar 9KW Genset (430 Hrs.)	13
(2) 8D Batteries (2013)	13
Battery Charger	14
Battery Hydration System	14
On the hard - Port	14
Starboard Stern	14
TNT Lift - Apex A-11 Tender - Yamaha Available Separately	15
Port View	15
CONTACTS	16
Contact details	16
Telephones	16
Office hours	16
Address	16

SPECIFICATIONS

Basic Information

Category: Motor Yacht

Sub Category: Sedan Cruiser

Model Year: 1993

Year Built: 1993

Country: United States

Fly Bridge: Yes

Cockpit: Yes

Dimensions

LOA: 40' 0" (12.19m)

Beam: 13' 6" (4.11m)

Min Draft: 3' 5" (1.04m)

Max Draft: 3' 5" (1.04m)

Clearance: 17' 0" (5.18m)

Speed, Capacities and Weight

Cruise Speed: 21 Kts. (24 MPH)

Max Speed: 28 Kts. (32 MPH)

Displacement: 20000 Pounds

Water Capacity: 105 Gallons

Holding Tank: 30 Gallons

Fuel Capacity: 310 Gallons

Accommodations

Total Cabins: 2

Total Berths: 2

Sleeps: 4

Total Heads: 1

Hull and Deck Information

Hull Material: Fiberglass

Deck Material: Fiberglass

Hull Configuration: Modified V-Hull

Hull Color: White

Engine Information

Engines: 2

Manufacturer: Yanmar

Model: 6LY-UTE

Engine Type: Inboard

Fuel Type: Diesel

DETAILED INFORMATION

Overview

Exceptionally well appointed Mainship 40 Sedan Bridge powered by Twin Yanmar 315 HP Diesels (1740 Hrs.), has a NEW 9KW Yanmar GenSet, (2012 -430 Hrs.) a state of the art Electronics package, Autohelm ST5000, NEW Strataglass/Isenglass enclosure (2012 - 2013)and also includes a TNT Lift.

Fresh bottom paint (2014) New Batteries w/ BHS, recent detailed and turnkey for her next owner. Current owner has identified his next boat, wants to pull the trigger and is motivated. 'Odyssey' is a must see, schedule a viewing and ... bring on an offer !

Main Cabin Accommodations

Single level interior with a step down from cockpit, is arranged with two staterooms forward and a spacious, full beam salon with lounge seating for eight. A large fully appointed U-Shaped galley is forward in the salon port, and a large walk-around double berth is found in the master Stateroom. VacuFlush head includes and separate shower stall.

- ***Two Reverse Cycle A/C units (one NEW 2009)***

Galley

- Microwave / Convection Oven
- Norcold Refrigerator Freezer (Full Size)
- B&D Coffee maker
- Double burner stove top/electric
- Stainless Steel sink
- Lots of storage space

Electronics and Navigational Equipment

- Garmin 740S GPS Chartplotter
- Raytheon R41XX Raster Scan

- Autohelm ST5000 Autopilot
- SONY Commander AM/FM/CD/MP3 W/RMX55M Remote
- Magnavox DVD Player
- JVC TV in Master Stateroom
- Radar
- Horizon VHF
- Ritchie Compass
- Flat Screen TV in Salon

Engine /Mechanical & Electrical Equipment

Twin YANMAR 315HP Diesels (1700 Hours)

- **NEW Yanmar 9KW Generator - 2012 (430 hours)**
- **NEW Batteries (2) 8D 9/2013 (1) #27 Gen Battery 8/2014**
- **Battery Hydration Systems**
- **30 AMP Battery Charger**
- **(2) 30 AMP Shore Power Cords**

Hull and Deck

The expansive bridge has an island helm console with wrap-around seating with a walk-through to the foredeck. The cockpit has built-in seating with transom door providing access to the stern TNT Deck.

- ***Full enclosed Bridge w/ StrataGlass - Isinglass 2012***
- ***Fresh Bottom Paint - 2014***
- ***Simpson Lawrence WINDLASS w/ Foot Controls***
- ***Cockpit Awning***
- ***Transom Shower***

Optional Equipment

11' APEX A-11 Tender w/ Yamaha Four Stroke (\$5K Current Value) is not included with this package; but available separately. Cover in included for Tender and Motor.

Exclusions

Owner's personal belongings.

Disclaimer

The Company offers the details of this vessel or yacht in good faith but cannot guarantee or warrant the accuracy of this information nor warrant the condition of the vessel. A buyer should instruct his representatives, agents, or his surveyors, to investigate such details as the buyer desires validated. This vessel or yacht is offered subject to prior sale, price change, or withdrawal without notice.

PHOTOS

Windlass



Foredeck aft



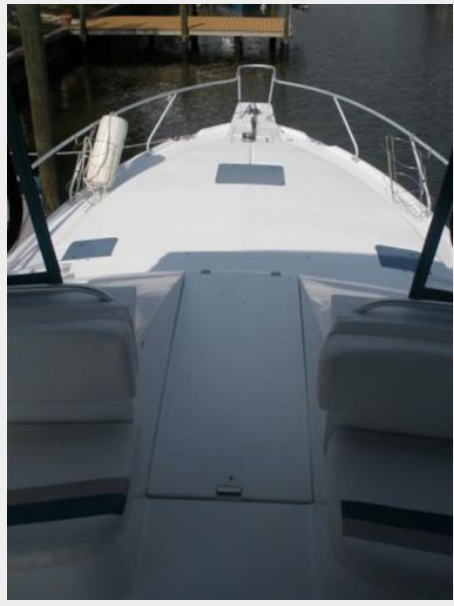
Helm Electronics



Helm View w/ Enclosure



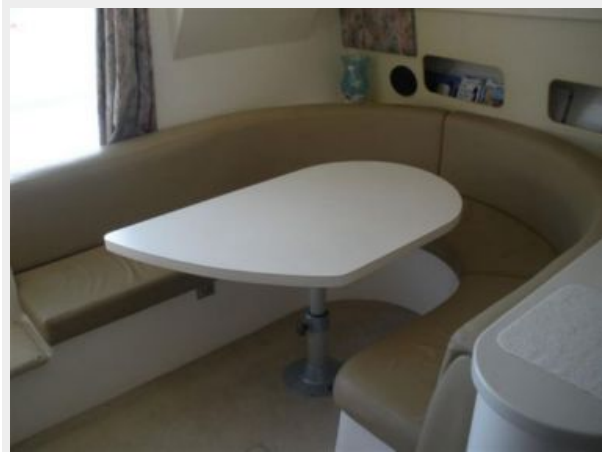
Bridge / Foredeck access



Bridge Wet-Bar



Salon Dinette



Galley



Starboard Lounge



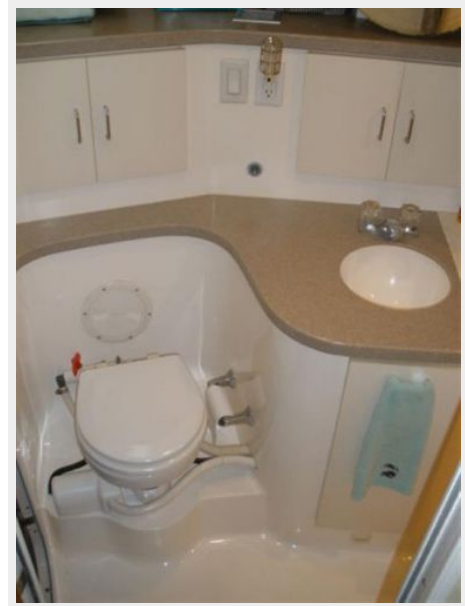
Salon Entertainment Center



Master Stateroom



VacuFlush Head



Head Med/Cabinet



Head Med/Cabinet 2



Head / Shower Stall



Guest Stateroom



Port 315HP Yanmar (1740 Hrs.)



Starboard 315HP Yanmar



Yanmar 9KW Genset (430 Hrs.)



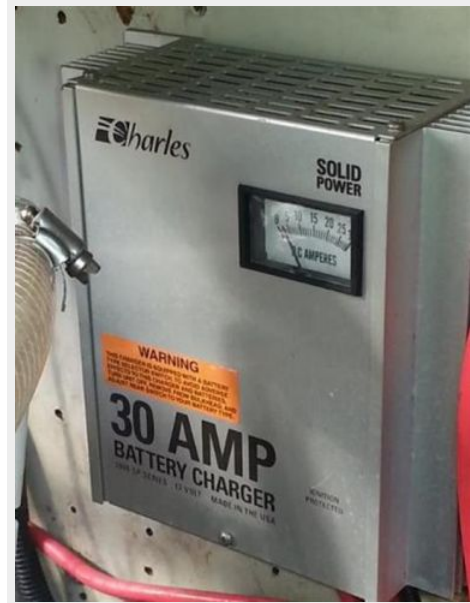
(2) 8D Batteries (2013)



Battery Hydration System



Battery Charger



On the hard - Port



Starboard Stern



**TNT Lift - Apex A-11 Tender - Yamaha
Available Separately**



Port View



CONTACTS

Andrey Shestakov, leading yacht broker of the sales department of Shestakov Yacht Sales Inc. Shestakov Yacht Sales Inc., the official representative of the Miami/Fort Lauderdale FL headquarters.

Contact details

Email: andrey@shestakovyachtsales.com

Web: shestakovyachtsales.com/en/

Telephones

USA: +1(954)274-4435

Office hours

Monday – Saturday: **9:00 - 21:00** EDT

Sunday: **closed**

Address



Harbour Towne Marina, 850 NE 3rd St,
STE 213, Dania, FL 33004