

## SEARENITY — HATTERAS



**Builder:** HATTERAS

**Year Built:** 1972

**Model:** Motor Yacht

**Price:** PRICE ON APPLICATION

**Location:** Canada

**LOA:** 58' 0" (17.68m)

**Beam:** 15' 10" (4.83m)

**Max Draft:** 5' 0" (1.52m)

**Cruise Speed:** 12 Kts. (14 MPH)

**Max Speed:** 18 Kts. (21 MPH)

Our experienced yacht broker, Andrey Shestakov, will help you choose and buy a yacht that best suits your needs **Searenity — HATTERAS** from our catalogue. Presently, at Shestakov Yacht Sales Inc., we have a wide variety of yachts available on our sale's list. We also work in close contact with all the big yacht manufacturers from all over the world.

If you would like to buy a yacht **Searenity — HATTERAS** or would like help answering any questions concerning purchasing, selling or chartering a yacht, please call **+1(954)274-4435**

# TABLE OF CONTENTS

TABLE OF CONTENTS	2
SPECIFICATIONS	4
Basic Information	4
Dimensions	4
Speed, Capacities and Weight	4
Hull and Deck Information	4
Engine Information	4
DETAILED INFORMATION	5
Accommodations	5
Galley	5
Electronics and Entertainment	6
Wheelhouse	7
Electrical System	7
Hull & Deck Equipment	8
Engine Room & Mechanical	10
Remarks	11
Exclusions	11
Disclaimer	11
PHOTOS	12
Salon	12
Galley	12
Galley	12
Wheelhouse benchseat	12
Master Stateroom	12
Guest stateroom	12
aft deck aft view	13
aft deck forward view	13
Custom arch	13

---

Flybridge settee	13
Flybridge helm	13
CONTACTS	14
Contact details	14
Telephones	14
Office hours	14
Address	14

---

# SPECIFICATIONS

---

## Basic Information

---

**Category:** Motor Yacht

**Model Year:** 1972

**Year Built:** 1972

**Country:** Canada

**Fly Bridge:** Yes

## Dimensions

---

**LOA:** 58' 0" (17.68m)

**Beam:** 15' 10" (4.83m)

**Max Draft:** 5' 0" (1.52m)

## Speed, Capacities and Weight

---

**Cruise Speed:** 12 Kts. (14 MPH)

**Max Speed:** 18 Kts. (21 MPH)

**Displacement:** 74000 Pounds

**Water Capacity:** 250 Gallons

**Holding Tank:** 50 Gallons

**Fuel Capacity:** 940 Gallons

## Hull and Deck Information

---

**Hull Material:** Fiberglass

## Engine Information

---

**Engines:** 2

**Manufacturer:** Detroit Diesel

**Model:** 1271 Naturals

**Engine Type:** Inboard

**Fuel Type:** Diesel

---

# DETAILED INFORMATION

---

## Accommodations

---

The interior of the boat is very spacious with a large, windowed salon open to the galley. The salon includes built-in shelving and is finished throughout with mahogany panels and matching wooden blinds. Open galley with large portholes is updated with stainless steel backsplash, new appliances including full size washer and dryer. The forward stateroom has two bunks with lots of storage and aft is a guest stateroom and large master stateroom, each with its own head and shower.

- Completely redecorated and upgraded in 2006
- Three staterooms and three heads, each with own shower
- All heads replaced with Raritan elongated china toilets with new hoses and connections
- Full width master stateroom aft with a walk around Queen Berth and full-sized closet. Walls finished with Ralph Lauren dark rattan wall covering with matching wool mohair headboard and seating
- Side by side single berths in guest stateroom and third guest stateroom/crews quarters forward.
- All new custom mattresses with fine linens
- Salon has been completely redone with mahogany panelled walls finished in a satin varnish and custom book shelves
- Custom mahogany faux wood blinds
- 26" High def. Flat screen LG TV viewable from salon and galley
- Custom finished bound carpet in salon and staterooms
- Teak and holly flooring in hallway and stairs
- Mahogany counter tops with three custom swivel stools

---

## Galley

---

Galley has been customized to open to salon and updated to include:

- 2 stainless Fischer Paykel dishwasher drawers
- 2 stainless U-Line fridge drawers
- Broan trash compactor
- Double stainless sink
- Stainless steeled tiled backsplash
- Thermidor propane gas cook top
- Stainless steel Broan hood fan
- Bosch electric oven
- Dinette replaced by full-sized Maytag washer and dryer with 6' countertop
- Custom cupboards with beautiful mahogany stained louvered doors.
- Teak and holly floors
- Microwave oven
- Large port lights over sink and laundry

---

## Electronics and Entertainment

---

New Electronics (2006) include

- Raymarine 48" 4 Kw Open Array Scanner Radar
- Raymarine E 120 Graphic display including GPS, Video depth, CCTV, Radar (FB and PH)
- **Raymarine ST 8001 Smart Autopilot (FB and PH)**
- **Raymarine ST Tridata units (FB and PH)**
- **Raymarine ST 60 Apparent wind unit**
- **Icom M604 VHF radios (FB and PH)**

- **Uniden hand-held VHF**
- **Motorola hand-held walkie talkies**
- **Colour camera – facing aft**
- **Digital sounders (FB and PH)**
- **Cell phone antenna**
- **ACR spotlight with 2 remote controls**
- **SeaTel 24” TV antenna (painted to match mast)**
- **SeaTel Wave Call with remotes in wheelhouse**
- **26” Sharp high def. TV on wall bracket in master stateroom**
- **Clarion music system with 6 CD changer and Sirius radio with 2 remotes**

---

## **Wheelhouse**

---

- **Ladder stairs to fly bridge replaced by custom full-sized interior stairs from helm station finished in teak.**
- **Teak and rubber floor**
- **Built-in upholstered settee with storage below and chart drawer**
- **Bennett trim tab controls**
- **Remote Clarion stereo controls**
- **Steering hynautic both stations**

---

## **Electrical System**

---

- **Northern Lights 20K generator new in 2005 with sound shield and remote start in wheelhouse 300 hrs.**

- **New 2006 24 volt cranking batteries for both motors**
- **24 volt house batteries with chargers**
- **New 2006 Xantrex inverter 4000 series with 12- 6 volt golf cart batteries**
- **Inverter runs fridges, lighting and outlets**
- **All new 120 & 220 electrical panel with all new wiring throughout boat manufactured by Ward Marine, Fort Lauderdale**
- **All new 12volt/24volt electrical panel and new wiring throughout boat**
- **All 32 volt systems replaced by 24 volt system**

## **Hull & Deck Equipment**

---

**The large, carpeted aft deck features include:**

- **Custom-made teak table, seats 8**
- **Teak bar cabinet with lots of interior storage**
- **Stainless U-Line fridge and freezer drawers in bar cabinet**
- **Teak trimmed built in settee covered in navy blue Extex chenille fabric with storage underneath**
- **5 panel Ez2CY aft enclosures with open-air option on 3 panels**
- **Large sliding, tinted glass windows port and starboard**
- **New teak wing doors varnished with new chrome hardware**
- **New teak trim beams with white V joint ceiling complete with halogen lighting and speakers**
- **Climate separation aft deck to wheel house by teak glass door and Eisenglass panel**

**The extended fly bridge has been completely renovated to include:**



- **Custom fabricated aluminum mast with spreaders to accommodate all electronics**
- **2 Pompanette stainless steel pedestal and base chairs in off-white vinyl**
- **DCS 24" stainless steel barbeque situated in cabinet with storage for propane underneath**
- **Large storage area under dash**
- **New black Corian covering entire dash**
- **New custom 316 bright stainless windscreen with 3/8 tempered glass inserts**
- **New 1 ¼ 316 bright stainless railings and bimini framework**
- **New off-white bimini top in Stamoid**
- **L-shaped seating storage boxes with custom cushions**
- **Remote Clarion stereo controls with outdoor speakers**
- **New 2008 Kahlenberg dual chrome horns with compressor**

**Dual AMI air horns with own compressor**

**Hull and Deck features include:**

- **Full hull and deck restoration top to bottom with Awlcraft epoxy paint**
- **Custom new rub rails on lower hull sides aft**
- **All new 316 bright stainless upper rub rails**
- **All windows replaced with tempered bronze glass**
- **New electric Side Power bow thruster with dual controls**
- **New Hatteras pulpit with stainless steel chain housing**
- **New 55 lb. Anchor with 300' 3/8<sup>th</sup> chain**
- **New Muir Atlantic VRC 2500 windlass**
- **Foot controls plus remote for anchor package**
- **Windlass controls at lower helm**
- **Fresh water wash down on foredeck**
- **Foredeck fibreglass bench seat built-in with custom cushions**

- **Fibreglass cabinet box on bow forward of settee housing 2 propane tanks with Corian tabletop**
- **New stainless steel stanchions and re-chromed brackets**
- **New varnished teak toe rails**
- **New varnished teak hand rails with Sunbrella navy covers**
- **6- 36"x10' fenders with navy velour covers**
- **6 - 3/4" custom braided 40' dock lines**
- **New Marquipt sea stairs with angled landing platform**
- **New custom stainless steel and teak stair ladder off transom**
- **New custom TNT lift with 4' x 12' fibreglass swim platform**
- **2006 12' Nautica wide body tender with navy blue hull includes 2006 50 HP Yamaha**
- **Tender includes stainless steel removable water-ski post and navy blue full cover**
- **Remote control launching from TNT lift**
- **2 new bronze propellers with spare set**
- **Fresh water wash down with hot and cold hand shower located in transom**

## **Engine Room & Mechanical**

---

- **Twin 1271 Natural Detroit Diesels re-built in 2005 ( run beautifully with top speed 18.5 knots)**
- **All bilge pumps replaced 2006 with automatic-manual controls at dash**
- **Hurricane diesel heat system throughout boat with individual controls**
- **Fresh water pump under galley floor**
- **Hynautic steering pressure reservoir**
- **2 centre line diesel tanks total 950 gallons**

---

## **Manifold for fuel management system**

**Water maker system**

---

## **Remarks**

**A classic, totally restored, Hargrave-designed three state room Motor Yacht. Hull and superstructure painted in Hinckley, Stuart, Florida yard. Hull sides painted in high gloss navy Awlgrip with red and gold accent striping. Top sides finished in oyster white Awlgrip. Boat shipped to Vancouver for interior re-fit that took place from 2006-current. Has a great entertainment platform on aft deck. Original engines re-built by Palm Beach Power in 2005. Engineer maintained. This is the most comfortable and spacious 58' boat on the market and a great live aboard.**

---

## **Exclusions**

**Owner's personal belongings.**

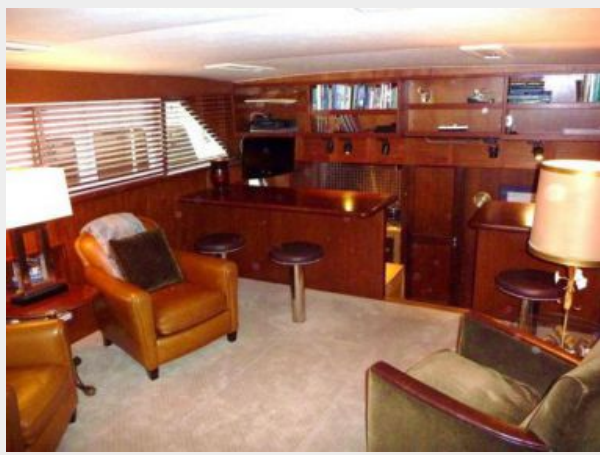
---

## **Disclaimer**

**The Company offers the details of this vessel or yacht in good faith but cannot guarantee or warrant the accuracy of this information nor warrant the condition of the vessel. A buyer should instruct his representatives, agents, or his surveyors, to investigate such details as the buyer desires validated. This vessel or yacht is offered subject to prior sale, price change, or withdrawal without notice.**

# PHOTOS

**Salon**



**Galley**



**Galley**



**Wheelhouse benchseat**



**Master Stateroom**



**Guest stateroom**



**aft deck aft view**



**aft deck forward view**



**Custom arch**



**Flybridge settee**



**Flybridge helm**



---

# CONTACTS

---

Andrey Shestakov, leading yacht broker of the sales department of Shestakov Yacht Sales Inc. Shestakov Yacht Sales Inc., the official representative of the Miami/Fort Lauderdale FL headquarters.

---

## Contact details

---

**Email:**  
andrey@shestakovyachtsales.com

**Web:** [shestakovyachtsales.com/en/](http://shestakovyachtsales.com/en/)

---

## Telephones

---

**USA:** +1(954)274-4435

---

## Office hours

---

**Monday – Saturday:** 9:00 - 21:00 EDT

**Sunday:** closed

---

## Address

---



**Harbour Towne Marina, 850 NE 3rd St,  
STE 213, Dania, FL 33004**