

DUCHESS OF TUSCANY II - VSY HULL 003 — VIAREGGIO SUPERYACHTS



Builder: VIAREGGIO SUPERYACHTS

Year Built: 2016

Model: Motor Yacht

Price: PRICE ON APPLICATION

Location: Italy

LOA: 209' 4" (63.80m)

Beam: 36' 2" (11.00m)

Max Draft: 10' 3" (3.10m)

Cruise Speed: 14 Kts. (16 MPH)

Max Speed: 17 Kts. (20 MPH)

Our experienced yacht broker, Andrey Shestakov, will help you choose and buy a yacht that best suits your needs **DUCHESS OF TUSCANY II - VSY Hull 003 — VIAREGGIO SUPERYACHTS** from our catalogue. Presently, at Shestakov Yacht Sales Inc., we have a wide variety of yachts available on our sale's list. We also work in close contact with all the big yacht manufacturers from all over the world.

If you would like to buy a yacht **DUCHESS OF TUSCANY II - VSY Hull 003 — VIAREGGIO SUPERYACHTS** or would like help answering any questions concerning purchasing, selling or chartering a yacht, please call **+1(954)274-4435**

TABLE OF CONTENTS

TABLE OF CONTENTS	2
SPECIFICATIONS	3
Basic Information	3
Dimensions	3
Speed, Capacities and Weight	3
Accommodations	3
Hull and Deck Information	3
Engine Information	4
DETAILED INFORMATION	5
Mechanical Equipment	5
Accommodations	6
Audio And Visual Equipment	6
Electrical System	7
Electronics	7
Tenders	7
Sundeck	7
Remarks	7
Exclusions	7
Disclaimer	7
PHOTOS	9
CONTACTS	11
Contact details	11
Telephones	11
Office hours	11
Address	11

SPECIFICATIONS

Basic Information

Category: Motor Yacht

Sub Category: Displacement

Model Year: 2016

Year Built: 2016

Country: Italy

Dimensions

LOA: 209' 4" (63.80m)

Beam: 36' 2" (11.00m)

Max Draft: 10' 3" (3.10m)

Speed, Capacities and Weight

Cruise Speed: 14 Kts. (16 MPH)

Max Speed: 17 Kts. (20 MPH)

Gross Tonnage: 1070 Pounds

Water Capacity: 10302.710028 Gallons

Fuel Capacity: 43060.044476 Gallons

Accommodations

Total Cabins: 7

Captain Cabin: True

Crew Sleeps: 16

Hull and Deck Information

Hull Material: Steel

Deck Material: Teak

Exterior Designer: Espen Oeino

Engine Information

Engines: 2

Manufacturer: Caterpillar

Model: 3516 B HD

Fuel Type: Diesel

DETAILED INFORMATION

Mechanical Equipment

MACHINERY

Main Engines	2 x Caterpillar3516 B HD	
Propulsion Power	2682 HP - 2000 kW	
Fuel Type	Diesel	
Steering Gear and Rudders	To be equipped with two rudders, each operated through a hydraulic steering system complying with requirements and controlled from the steering stations.	
the classification wheelhouse and wing	The ship will have two Tenfjord steering gear machines.	
Model SR562-FCP	Maximum Speed	17 knots
Economical Speed	13.5 knots	
Range at Economical Speed	5000 nautical miles @ 12 knots	

ANCILLARY MACHINERY

VT Naiad Marine Zero Speed Stabilization System. Model 820

Underway and at anchor. Fins Dimensions: 2 x 5.01 m²

Stabilizers

Control System: Full Adaptive mod Datum Underway with sensor for roll angle, roll velocity and roll accelerations.

Powered by twin electric hydraulic powerpack.

Dynamic Positioning

Kongsberg cPOS system with joystick control.

System designed to satisfy IMO Dynamic Position Class 1 requirements.

Bow Thruster Bow Thruster: VOITH - 260kw

Stern Thruster Stern Thruster: Schottel Pump Jet 240kw - 360°

Water Makers Producing 26.000 liters per day

Accommodations

Owners Full width suite forward on the main deck with his and hers ensuite bathrooms and dressing rooms.

Guests Potential for six guest cabins each with ensuite bathroom.

Crew Captain's double cabin on bridge deck.
Accommodation for 14 crew members in eight cabins.

Audio And Visual Equipment

The ship will be provided with a centralized entertainment system in all main guest and owner's areas including:

Audio/Video System

CCTV interface

Light & Cabin Control System

Audio/Video on demand server

LCD touch screen controls

LCD or plasma screen

Sat TV connection

Sat TV decoders (owner's supply)

Light controls

Curtain controls

The system to provide high audio/video quality and simplicity in all operations

Electrical System

4 x Caterpillar C9, 50 hz, - 200 ekw each

Generators

1 x Caterpillar C4 380v 50hz - 85 ekw emergency generator

Electronics

Integrated Messaging and Paging System

Cisco Intergrated Network (IP phone, wireless LAN, Remote Access)

Tenders

2 x 23' Castoldi Jet tenders

1 x 14' Castoldi rescue tender

Sundeck

Swimming Pool on Sundeck

Remarks

Delivery due 18 months from signature of contract.

Exclusions

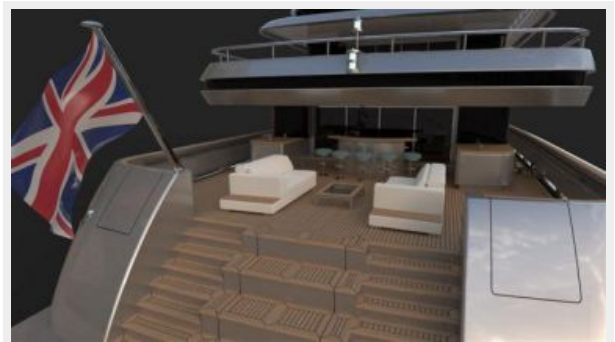
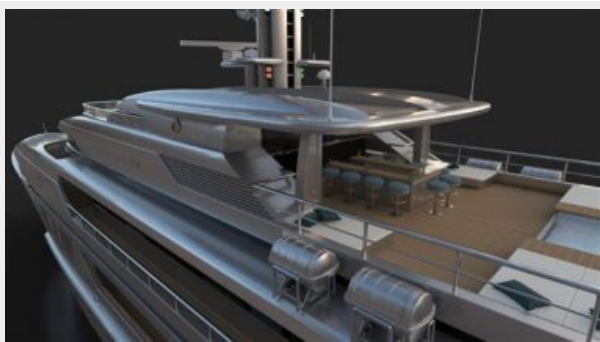
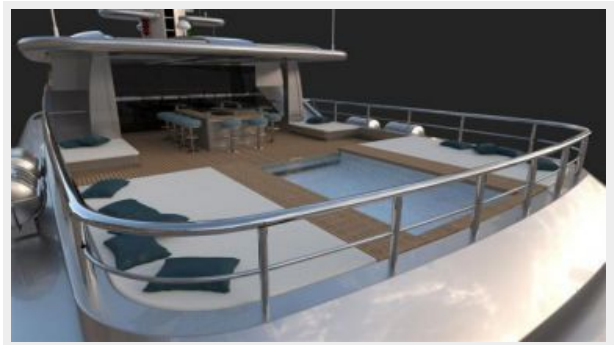
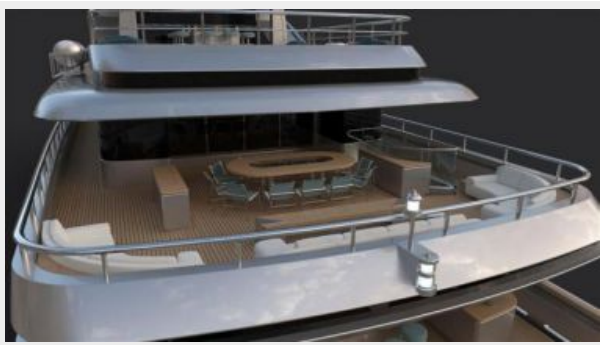
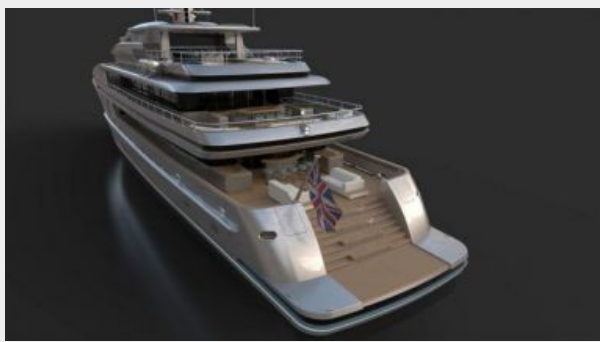
Owner's personal belongings.

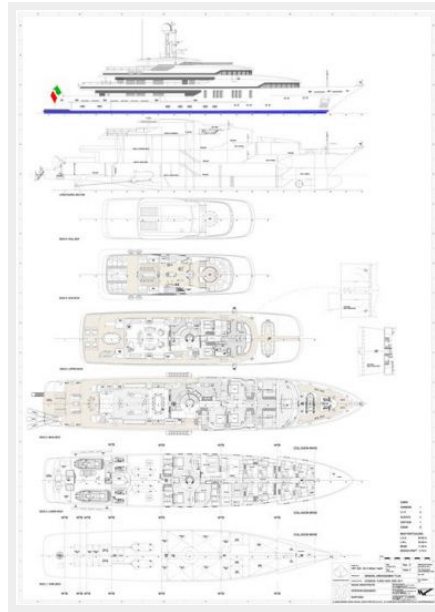
Disclaimer

The Company offers the details of this vessel or yacht in good faith but cannot guarantee or warrant the accuracy of this information nor warrant the condition of the vessel. A buyer should

instruct his representatives, agents, or his surveyors, to investigate such details as the buyer desires validated. This vessel or yacht is offered subject to prior sale, price change, or withdrawal without notice.

PHOTOS





CONTACTS

Andrey Shestakov, leading yacht broker of the sales department of Shestakov Yacht Sales Inc. Shestakov Yacht Sales Inc., the official representative of the Miami/Fort Lauderdale FL headquarters.

Contact details

Email: andrey@shestakovyachtsales.com

Web: shestakovyachtsales.com/en/

Telephones

USA: +1(954)274-4435

Office hours

Monday – Saturday: **9:00 - 21:00** EDT

Sunday: **closed**

Address



Harbour Towne Marina, 850 NE 3rd St,
STE 213, Dania, FL 33004