

## AZIMUT 100 JUMBO @ LA PAZ — AZIMUT



**Builder:** [AZIMUT](#)

**Year Built:** 1998

**Model:** Mega Yacht

**Price:** PRICE ON APPLICATION

**Location:** Mexico

**LOA:** 100' 0" (30.48m)

**Beam:** 21' 9" (6.63m)

**Max Draft:** 6' 8" (2.03m)

Our experienced yacht broker, Andrey Shestakov, will help you choose and buy a yacht that best suits your needs **Azimut 100 Jumbo @ La Paz — AZIMUT** from our catalogue. Presently, at Shestakov Yacht Sales Inc., we have a wide variety of yachts available on our sale's list. We also work in close contact with all the big yacht manufacturers from all over the world.

If you would like to buy a yacht **Azimut 100 Jumbo @ La Paz — AZIMUT** or would like help answering any questions concerning purchasing, selling or chartering a yacht, please call **+1(954)274-4435**

# TABLE OF CONTENTS

TABLE OF CONTENTS	2
SPECIFICATIONS	4
Overview	4
Basic Information	4
Dimensions	4
Speed, Capacities and Weight	4
Accommodations	4
Hull and Deck Information	5
Engine Information	5
DETAILED INFORMATION	6
Accommodations	6
Bathing Platform & Transom	6
Electronics and Navigational Equipment	6
Engine /Mechanical Equipment	6
Flybridge	7
Guest Staterooms	7
Second Helm Station & Fly equipment	7
Master Stateroom	7
VIP Stateroom	7
Exclusions	7
Disclaimer	7
PHOTOS	8
El Gari tiene el cuarto de tv de arriba convertido en 5ta recámara de fabrica, el comedor interior es solo una mesa de juego ( 4 personas ), el salon no tiene la parte del bar, es solo TV room y el comedor de afuera es para 10 personas.	14
CONTACTS	15
Contact details	15
Telephones	15

---

Office hours	15
Address	15

---

# SPECIFICATIONS

---

## Overview

---

1999 AZIMUT 100 JUMBO @ La Paz, BCS

## Basic Information

---

**Category:** Mega Yacht

**Model Year:** 1999

**Year Built:** 1998

**Country:** Mexico

**Vessel Top:** Bimini Top

**Fly Bridge:** Yes

**Cockpit:** Yes

## Dimensions

---

**LOA:** 100' 0" (30.48m)

**Beam:** 21' 9" (6.63m)

**Max Draft:** 6' 8" (2.03m)

## Speed, Capacities and Weight

---

**Displacement:** 185188.30008 Pounds

**Water Capacity:** 713 Gallons

**Holding Tank:** 686 Gallons

**Fuel Capacity:** 3666 Gallons

## Accommodations

---

**Total Cabins:** 5

**Total Berths:** 8

**Sleeps:** 10

**Total Heads:** 5

**Crew Cabin:** 2

**Crew Berths:** 4

**Crew Sleeps:** 4

**Crew Heads:** 2

---

## Hull and Deck Information

---

**Hull Material:** GRP

**Deck Material:** Teak

**Hull Configuration:** Planing

**Hull Color:** White

**Hull Finish:** Stainless Steel

**Exterior Designer:** Stefano Righini

**Interior Designer:** Carlo Galeazzi

---

## Engine Information

---

**Engines:** 2

**Manufacturer:** MTU

**Model:** 16V2000M83

**Engine Type:** Inboard

**Fuel Type:** Diesel

## DETAILED INFORMATION

### Accommodations

This 100' Azimut Jumbo is characterized by a single gracious living area which accommodates both the main salon and the dining room. Hi-gloss cherry and burl wood is used throughout with light coloration. Honeycombed sage and beige granite is used for galley, galley counters, foyer and powder room with teak and holly flooring for the wheelhouse, galley and foyers. The Wheelhouse features distressed saddle leather for lounge cushions and an extension mechanism is provided for the tail table. The Aft Deck has a fixed table with inlaid Compass Rose design. The furniture is complimented with cushions upholstered with indoor/outdoor fabric. The Salon features light colored furniture, a flat screen TV on raiser, a bar cabinet and a dining table. Also in the Salon is located a daily head with high quality wood and marble tops.

### Bathing Platform & Transom

\*One Compressors Bauers Serial.38203 Model.Junior-EI \*Two28 kw 380 V/220 V transformers  
 \*Eitgh-IMTRA 10 WATT HID HULL LIGHT \*One Desalination HRO system Model:840-1SFC  
 Reverseosmosis Horizon seafari 800 U.S Gallons/3028 liters Per.24 Hours \*One Desalination  
 Sea-Recovery SRC.AWM800-1 800 U.S Gallons/3028 liters Per.24 Hours

### Electronics and Navigational Equipment

\*One Marine Radar Furuno Model: 1823c-BB .025/72 Nm. Nav net \*One color video plotter  
 Furuno Model: FCV-611 Nav net .025/2048 Nm. \*One MF/HF Marine transceiver Model:IC-  
 M710-ICOM. \*One VHF Marine IC-M302 ICOM. \*One GPS furuno Model:GP-32 \*One Autropilot  
 Mondel:NAVPILOT-500 \*One INTERPHASE Model:120-U-26155 \*One COMPASS Riviera s.r.c  
 GENOVA White star \*One TRACPHONE F55 KVH \*One TRACVISION G.6 KVH \*One BOW  
 THRUSTER 12" 40 HP. 208 V. \*One STATIONS WHEEL HOUSE \*One STATIONS F BRIDGE  
 \*One MONITOR 9" Security Camera system -MAIN DECK ATT -ENGINE ROOM \*One Intercom.  
 -Wheel house -Main deck aft -Main deck fwd -Engine room -Garage \*One stereo Tipe Car CD  
 SONY

### Engine /Mechanical Equipment

\*Main Engine Er. MTU 16V2000M83 Serial: 536000261 Hours: 5848 \*Main Engine Br. MTU  
 16V2000M83 Serial: 536000260 Hours: 5853 \*Diesel Generators Kohler 55KW-50/60 Hz  
 \*Generator Stbr. Hours: 7164 \*Generator Port Hours: 8208 \*Air conditioning system Cruisair  
 192000 BTU \*Engine Room floor aluminium

---

## Flybridge

---

\*One Pathfinder Radar Scanners Raytheon 24Nm. \*One stereo type Car CD Sony \*One barbeque 220/volts \*One ice Maker U-Line \*One UHF Marine IC-M302 ICOM. \*One panel control

---

## Guest Staterooms

---

Two guest cabins compliment the sleeping areas of this vessel. It has two guest cabins, one located at portside and the other at starboard side. Both depict hi quality wood, a private head and two single beds.

---

## Second Helm Station & Fly equipment

---

\*One Pathfinder Radar Scanners Raytheon 24Nm. \*One stereo type Car CD Sony \*One barbeque 220/volts \*One ice Maker U-Line \*One UHF Marine IC-M302 ICOM. \*One panel control

---

## Master Stateroom

---

The Master Cabin located amidship features hi-gloss wood, a full size double bed a walking dressing room and a luxurious head with marble tops, double sink and teak floored shower.

---

## VIP Stateroom

---

The VIP Cabin located towards the bow, features the same hi quality wood found in all the four staterooms, a double bed, private entry to its fancy head and dressing room.

---

## Exclusions

---

Owner's personal belongings.

---

## Disclaimer

---

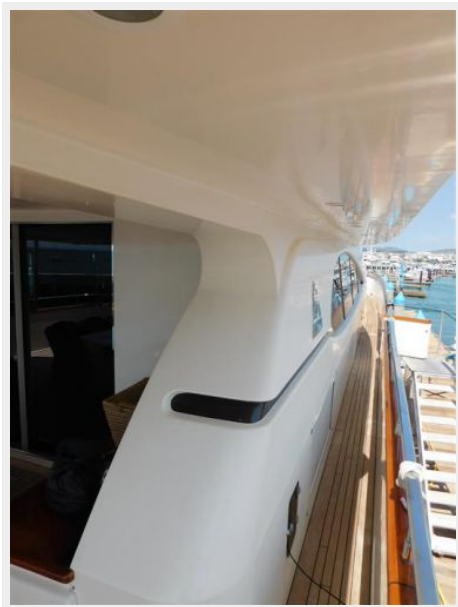
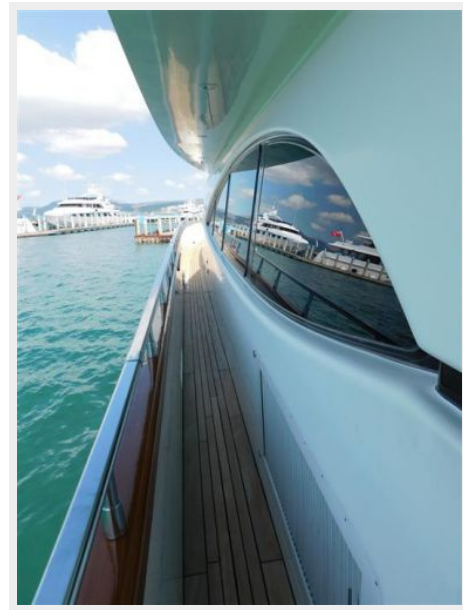
The Company offers the details of this vessel or yacht in good faith but cannot guarantee or warrant the accuracy of this information nor warrant the condition of the vessel. A buyer should instruct his representatives, agents, or his surveyors, to investigate such details as the buyer desires validated. This vessel or yacht is offered subject to prior sale, price change, or withdrawal without notice.

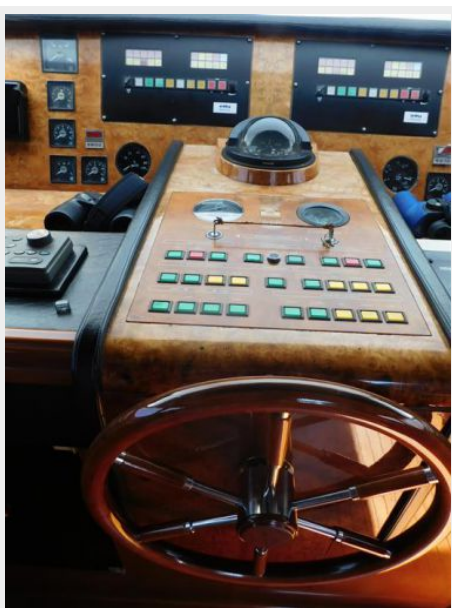
# PHOTOS

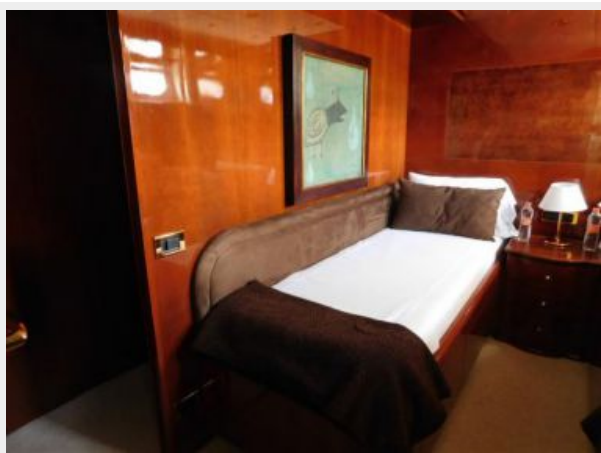
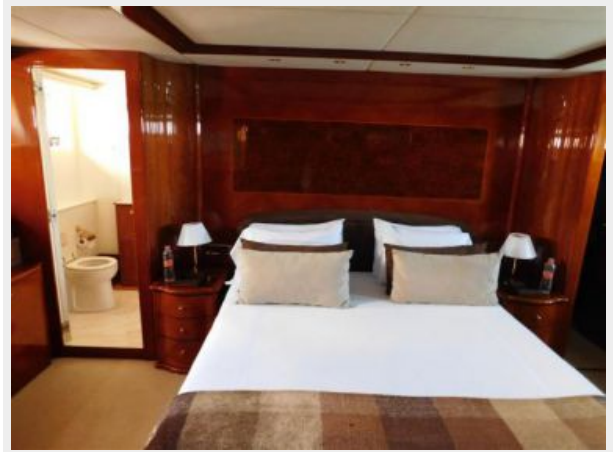








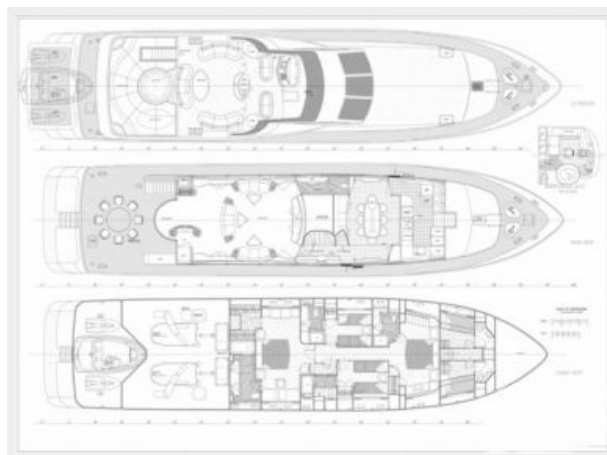








**El Gari tiene el cuarto de tv de arriba convertido en 5ta recámara de fabrica, el comedor interior es solo una mesa de juego ( 4 personas ), el salon no tiene la parte del bar, es solo TV room y el comedor de afuera es para 10 personas.**



# CONTACTS

---

Andrey Shestakov, leading yacht broker of the sales department of Shestakov Yacht Sales Inc. Shestakov Yacht Sales Inc., the official representative of the Miami/Fort Lauderdale FL headquarters.

## Contact details

---

Email: [andrey@shestakovyachtsales.com](mailto:andrey@shestakovyachtsales.com)

Web: [shestakovyachtsales.com/en/](http://shestakovyachtsales.com/en/)

## Telephones

---

USA: +1(954)274-4435

## Office hours

---

Monday – Saturday: **9:00 - 21:00** EDT

Sunday: **closed**

## Address

---



Harbour Towne Marina, 850 NE 3rd St,  
STE 213, Dania, FL 33004