

RAGAZZA 2004 AZIMUT 100 JUMBO @ LA PAZ — AZIMUT



Builder: AZIMUT

Year Built: 2004

Model: Motor Yacht

Price: PRICE ON APPLICATION

Location: Mexico

LOA: 100' 0" (30.48m)

Beam: 21' 9" (6.63m)

Max Draft: 6' 4" (1.93m)

Cruise Speed: 24 Kts. (28 MPH)

Max Speed: 28 Kts. (32 MPH)

Our experienced yacht broker, Andrey Shestakov, will help you choose and buy a yacht that best suits your needs **RAGAZZA 2004 AZIMUT 100 JUMBO @ LA PAZ — AZIMUT** from our catalogue. Presently, at Shestakov Yacht Sales Inc., we have a wide variety of yachts available on our sale's list. We also work in close contact with all the big yacht manufacturers from all over the world.

If you would like to buy a yacht **RAGAZZA 2004 AZIMUT 100 JUMBO @ LA PAZ — AZIMUT** or would like help answering any questions concerning purchasing, selling or chartering a yacht, please call **+1(954)274-4435**

TABLE OF CONTENTS

TABLE OF CONTENTS	2
SPECIFICATIONS	4
Overview	4
Basic Information	4
Dimensions	4
Speed, Capacities and Weight	4
Accommodations	5
Hull and Deck Information	5
Engine Information	5
DETAILED INFORMATION	6
Accommodations	6
Crew Quarters	6
Main Deck & Cockpit	6
Electrical System	6
Flybridge	7
Galley	7
Guest Staterooms	7
Stern	7
Master Stateroom	8
Pilothouse	8
Salon & Dinning	8
VIP Stateroom	8
Exclusions	9
Disclaimer	9
PHOTOS	10
WhatsApp Image 2020-06-16 at 13.01.43 (1)	19
WhatsApp Image 2020-06-16 at 13.01.43	19
WhatsApp Image 2020-06-16 at 13.05.29	19

WhatsApp Image 2020-06-16 at 13.05.30	19
CONTACTS	20
Contact details	20
Telephones	20
Office hours	20
Address	20

SPECIFICATIONS

Overview

2004 AZIMUT 100 JUMBO @ LA PAZ

Basic Information

Category: Motor Yacht

Sub Category: Flybridge

Model Year: 2004

Year Built: 2004

Country: Mexico

Fly Bridge: Yes

Cockpit: Yes

Dimensions

LOA: 100' 0" (30.48m)

Beam: 21' 9" (6.63m)

Max Draft: 6' 4" (1.93m)

Speed, Capacities and Weight

Cruise Speed: 24 Kts. (28 MPH)

Max Speed: 28 Kts. (32 MPH)

Displacement: 220462.262 Pounds

Water Capacity: 581.1785144 Gallons

Holding Tank: 369.8408728 Gallons

Fuel Capacity: 4033.90723404 Gallons

Accommodations

Total Cabins: 4

Total Berths: 4

Sleeps: 8

Total Heads: 5

Crew Cabin: 2

Crew Berths: 4

Crew Sleeps: 4

Crew Heads: 2

Hull and Deck Information

Hull Material: GRP

Deck Material: GRP

Hull Configuration: Planing

Hull Color: White

Hull Finish: Stainless Steel

Exterior Designer: Stephano Righinni

Interior Designer: Carlo Galeazzi

Engine Information

Engines: 2

Manufacturer: MTU

Model: 16V2000M91

Engine Type: Inboard

Fuel Type: Diesel

DETAILED INFORMATION

Accommodations

The Azimut 100 Jumbo offers classical luxury, comfort and italian design with great accommodation for 8 in 4 cabins, each with en-suite facilities, as well as, accommodation for 4 crew members in their own quarter. • Large Saloon with separated dining area • Day head in Saloon • Large galley • 2 double crew cabins 1 head each • Large center master cabin with en-suite head & dressing • VIP cabin with en-suite head • Two twin cabins with en-suite head • Large Wheelhouse • Large Fly bridge with Jacuzzi, Wet bar & large sunbathing area

Crew Quarters

Access through both watertight door on port side (galley) and forward hatch on superstructure • Two cabins and two heads • Two Pullman berths in Starboard Cabin • WC and washbasin • Cabinets • Air extractor • Bulkheads, fabric, curtains

Main Deck & Cockpit

The Cockpit is teak floored and has a high quality wood table w/10 wooded chairs. It connects to the main Salon via a glass tempered door. From here you can reach the Flybridge through a stair also in teak. The Yacht can be accessed through the Cockpit area by a hydraulic gangway. • External surface in 12mm thick teak • Teak cap rail with stainless steel handrail on bulwark • Hawsehole in the bulwark • Lights for external deck placed on both sides of superstructure and on aft cockpit ceiling • Windows in high thickness tempered glass and frame in steel • Three fairleads with cleats in stainless steel (each side) • Box water filler on each side of the superstructure • Fuel filler on each side of the superstructure • Watertight door to access to engine room on port side • Watertight door to access to galley on port side • Watertight door to access to the lobby on starboard side

Electrical System

GENERATORS (2):2 x KOHLER 65EOZ 65KW each Starboard 8212 HRS. Portside 8172 HRS.
TRAC AMERICAN STABILIZERS BOW THRUSTER PINE 300 WATER-MAKER HORIZON
SEAFARI 1800 GPD 6 UNDER WATHER LIGHT METAL HALIDE 150 W 1 ANTENNA
SATELITAL SEATEL 3098S/SE 1 KVH TRAC PHONE 252 1 HIDRAULIC BOWTRHUSTER
BCS 1 OPACMARE AUTOMATIC DOOR 2185 2 MASTER VOLTS BATTERY CHARGER 100
AMP SERVICE BATTERY AGM DRY FREE MAINTENANCE 1200 AMP /HR A/C SYSTEM
MARINE AIR 192000 BTU

Flybridge

The Flybridge is enormous and features a wet bar w/grill included, a big Jacuzzi, sunbathing area, and ample seating area compromised by three sofas, two located at the sides and another one at the middle, plus the second helm station. You can access the Flybridge either through the Wheel House stair or through the rear stairs located by the Cockpit area. • Pilot console includes: Main engines controls, • main engines and reversing gear gauges, • instruments for navigation, • trim tabs control/indicator, • rudder angle indicator, • forward anchor winch control, • electric search light, horn and navigation lights controls, • fire extinguisher pump control, • maneuvering intercom connecting wheelhouse, main deck and engine room • Helm seats (port side) • Two seats (starboard side) • Bar furniture with sink, barbecue, fridge and icemaker • Table in fiberglass • Three fiberglass sofas - two on the sides and third on the middle • Fiberglass arch with navigation lights, antennas and search light • Lights and watertight loudspeakers • Navigation lights • Non skid flooring surface • Windscreen in plexiglass with frame in painted fiberglass • Stainless steel handrails around sunbathing cushions

Electronics on the Flybridge Station: 1 VHF RAY 240 1 RAY MARINE ST7002 AUTOPILOT CONTROL UNIT FLY BRIDGE 1 ST290 RAY MARINE MUTI VIEW 1 RAY MARINE CHURT PLOTE RC530 2 RAY MARINE ST290 RUDDER ANGLE IND.

Galley

Access through both dining area and watertight door on port side of superstructure. • Equipment of the galley includes: sink in stainless steel, electric four burner countertop with hood, oven and microwave, dishwasher, large home refrigerator / freezer • Access to crew quarters • Big table • Sofa

1 EURO CAVE WINE CEDAR COMPACT 1 MIELE WASH & DRYER T1570 1 LAUNDRY MIELE W1918 1 TRASH COMPACTOR ISE CLASSIC

Guest Staterooms

Twin berths • Indirect lighting underneath berths • Drawers underneath berths • Nightstand • TV SHARP ACUOS LCD 15" • Wardrobe • Opening portholes on both sides • Curtain, upholstery and carpet

Guest Heads: • WC system • Shower • Cabinets and mirror • Marble Top and floor • Air extractor • Curtain on porthole

Stern

Transom with electro-hydraulic opening convertible into a wide swimming platform • Hatch to access to garage on the floor of the aft deck • Garage with launching and recovering system for

tender and remote control • Shore power inlet in the bulwark • Water shore connection on transom • Shower on transom (starboard side)

Master Stateroom

Double bed • Two nightstands • Indirect lighting underneath the bed • TV cabinet with SHARP ACUOS LCD 19" TV • SONY DVD • Walk-in closet with hanging bar, cabinet & shelves • Opening portholes on both sides • Sofa on port side • Vanity with opening horizontal top, mirror and stool on starboard side • Drawers underneath the bed • Drawers and cabinets • Curtains, upholstery and carpet **Master Head:** • WC system • Two washbasins • Shower • Cabinets and mirror • Marble Top and floor • Air extractor • Air conditioning duct • Curtain on porthole

Pilothouse

Access through staircase from lobby • Console in burl wood • Adjustable helm seat in simi-leather • Two seats against aft bulkhead • Area for maps and map drawer • Cabinets

Electronics:

RAY MARINE RL80C 10.4" LCD COLOR DISPLAY RAY MARINE RL70RC 7" LCD
RADAR/PLOTTER ELECTRONIC RAY MARINE ST700 2 AUTOPILOT CONTROL UNIT 2 RAY
MARINE ST80 MULT IVEW

Salon & Dinning

Access through semi-circular tempered glass and stainless steel frame sliding doors.

- Black Granite Top on bar • Ice-maker, refrigerator, cabinet for bottles and sink in stainless steel
- One Sofa & two armchairs • Furniture and drawers • 42" Samsung Flat screen TV raiser w/VHS Samsung World Wide Video SV-5000W & SONY DVD & Bose Life Style System 50 • Custom curtain and Automatic, upholstery and carpet • Custom ceiling with recess in lacquered wood • Indirect lighting in the ceiling recess

VIP Stateroom

Double bed with foam mattress • Two nightstands • Indirect lighting underneath the bed • TV cabinet with SHARP ACUOS LCD 19" TV • SONY DVD • Opening portholes on both sides •

Sofa on port side • Vanity with opening horizontal top, mirror and stool on starboard side • Drawers underneath the bed • Wardrobe with hanging bar • Drawers and cabinets • Curtains, upholstery and carpet

VIP Head:

• Cabinets and mirror • Marble Top and floor • Air extractor • Air conditioning duct • Curtain on porthole

Exclusions

Owner's personal belongings.

Disclaimer

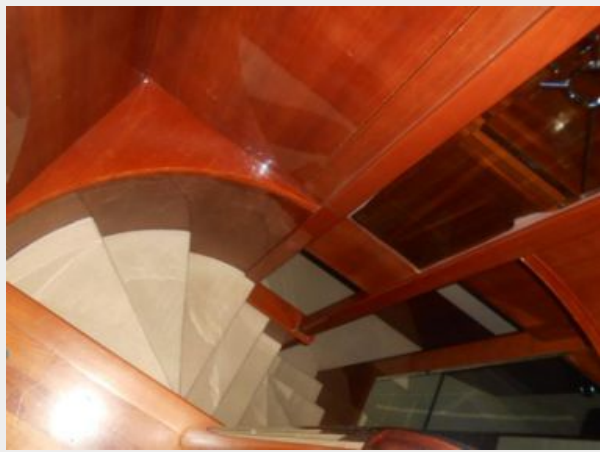
The Company offers the details of this vessel or yacht in good faith but cannot guarantee or warrant the accuracy of this information nor warrant the condition of the vessel. A buyer should instruct his representatives, agents, or his surveyors, to investigate such details as the buyer desires validated. This vessel or yacht is offered subject to prior sale, price change, or withdrawal without notice.

PHOTOS



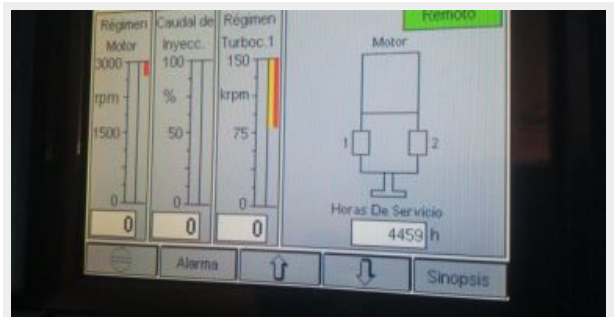


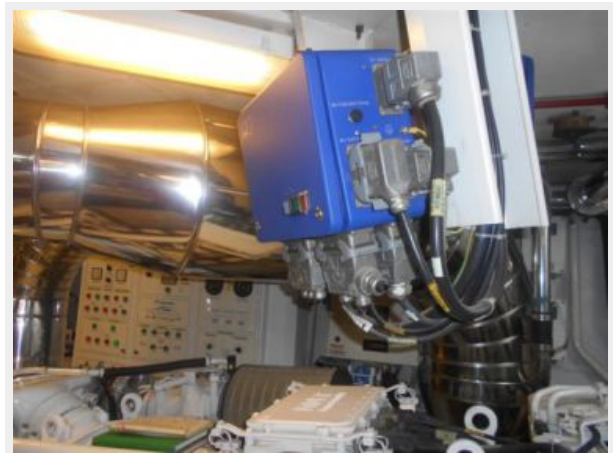


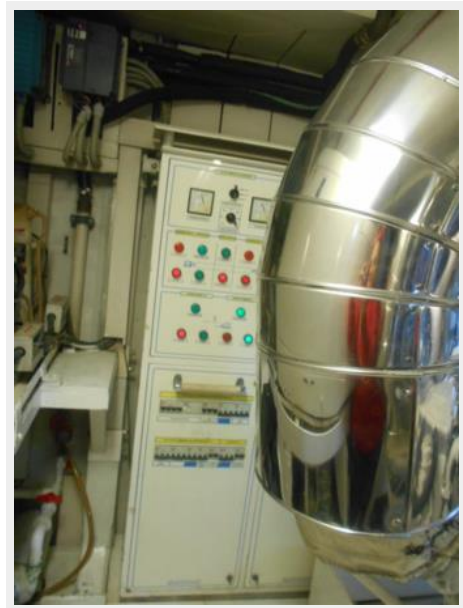








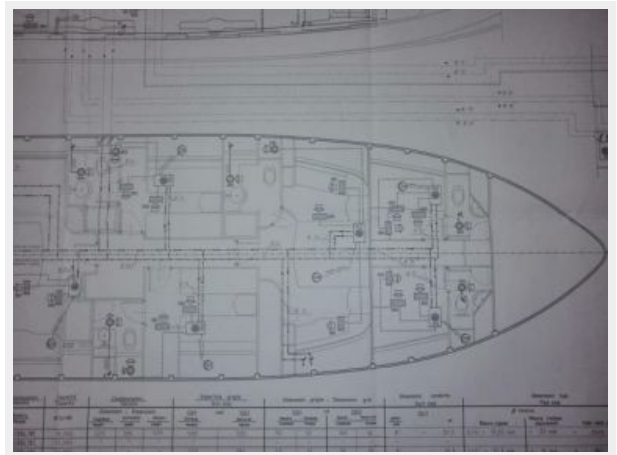
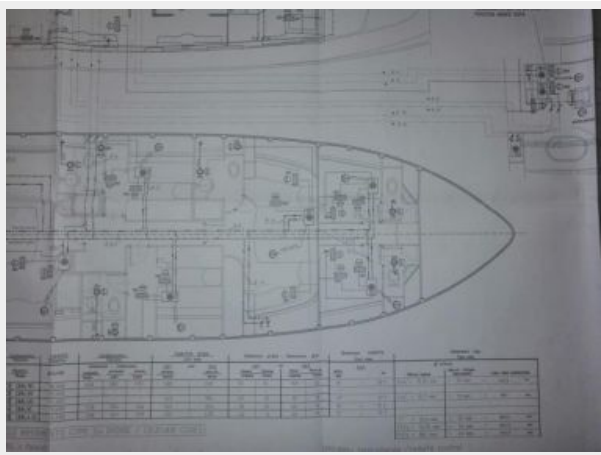






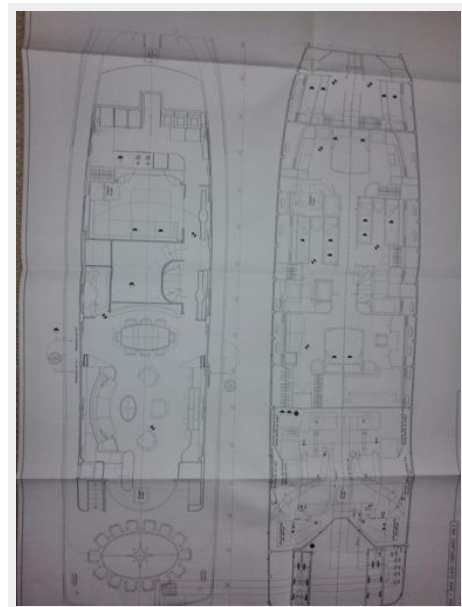
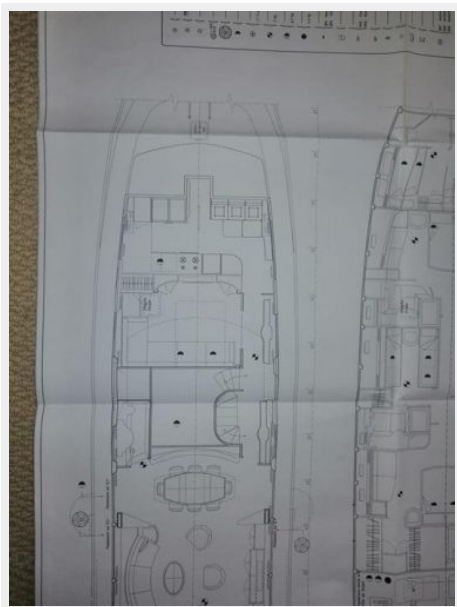
WhatsApp Image 2020-06-16 at 13.01.43 (1)

WhatsApp Image 2020-06-16 at 13.01.43



WhatsApp Image 2020-06-16 at 13.05.29

WhatsApp Image 2020-06-16 at 13.05.30



CONTACTS

Andrey Shestakov, leading yacht broker of the sales department of Shestakov Yacht Sales Inc. Shestakov Yacht Sales Inc., the official representative of the Miami/Fort Lauderdale FL headquarters.

Contact details

Email: andrey@shestakovyachtsales.com

Web: shestakovyachtsales.com/en/

Telephones

USA: +1(954)274-4435

Office hours

Monday – Saturday: **9:00 - 21:00** EDT

Sunday: **closed**

Address



Harbour Towne Marina, 850 NE 3rd St,
STE 213, Dania, FL 33004