

## ASPEN ALTERNATIVE — SOVEREIGN



**Судостроитель:** SOVEREIGN

**Год постройки:** 2002

**Модель:** Моторная яхта

**Цена:** **ЦЕНА ЯХТЫ ПО ЗАПРОСУ**

**Местонахождение:** United States

**Длина общая:** 120' 0" (36.58m)

**Ширина:** 25' 0" (7.62m)

**Макс. осадка:** 6' 5" (1.96m)

**Крейс. скорость:** 17 Kts. (20 MPH)

**Макс. скорость:** 23 Kts. (26 MPH)

Купить **ASPEN ALTERNATIVE — SOVEREIGN** а также выбрать подходящую вам яхту из нашего каталога яхт вам поможет опытный яхтенный брокер Андрей Шестаков. На сегодняшний день компания **Shestakov Yacht Sales Inc.** имеет большое количество яхт в собственном списке продаж, а также тесно сотрудничает со всеми крупными яхтенными производителями по всему миру.

Для того чтобы купить яхту **ASPEN ALTERNATIVE — SOVEREIGN** а также проконсультироваться по любому вопросу связанному с покупкой, продажей, чартером яхт позвоните по телефону **+7(918)465-66-44**.

# ОГЛАВЛЕНИЕ

ОГЛАВЛЕНИЕ	2
ХАРАКТЕРИСТИКИ	5
Основная информация	5
Размеры	5
Скорость, вместимость и масса	5
Размещение	5
Корпус и палуба	6
Информация о двигателе	6
ПОДРОБНОЕ ОПИСАНИЕ	7
Main Salon	7
Office/Study - Main Deck	7
Master Stateroom and Bath	7
Guest Staterooms	7
Gym (May convert to 5th Cabin)	8
Captain's Cabin - Port Forward	8
Crew Quarters	9
Pilothouse Electronics	9
Flybridge Electronics	9
Mechanical Equipment	9
Electrical System	9
Safety and Fire Protection	10
Deck Equipment	10
Tenders and Toys	10
Remarks / Upgrades	10
Exclusions	10
Исключения	10
Отказ от ответственности	11
ФОТОГРАФИИ	12

Main Deck Aft	12
Main Deck Aft	12
Main Salon	12
Main Salon	12
Main Salon	12
Main Salon	12
Day Head	13
Formal Dining	13
Galley	13
Galley	13
Office/Study	13
Lower Deck Guest Foyer	13
Master Stateroom	14
His-Her Master Bath	14
Master Shower	14
Gym	14
Stbd Queen Guest Stateroom	14
Guest Head	14
Port Queen Guest Stateroom	15
Guest Stateroom #4	15
Guest Head	15
Pilothouse	15
Upper Helm Station	15
Pilothouse Settee / Observation Area	15
Flybridge Seating and Table	16
Flybridge Dining Table	16
Flybridge BBQ and Lounges	16
Flybridge Bar	16
Flybridge Aft	16

---

Foredeck Seating	16
ASPEN ALTERNATIVE	17
ASPEN ALTERNATIVE	17
Layout	17
КОНТАКТЫ	18
Контактная информация	18
Телефоны	18
Время работы	18
Адрес	18

# ХАРАКТЕРИСТИКИ

## Основная информация

Тип судна: Моторная яхта	Подкатегория: Pilothouse
Модельный год: 2002	Год постройки: 2002
Год обновления: 2014	Страна: United States
Верх: Hardtop	Открытая палуба мостика: Да

## Размеры

Длина общая: 120' 0" (36.58m)	Ширина: 25' 0" (7.62m)
Макс. осадка: 6' 5" (1.96m)	

## Скорость, вместимость и масса

Крейс. скорость: 17 Kts. (20 MPH)	Дальность на крейсерской скорости: 1500
Макс. скорость: 23 Kts. (26 MPH)	Чистый вес: 211 Pounds
Вместимость воды: 1100 Gallons	Объем топливного бака: 5560 Gallons

## Размещение

Всего кают: 5	Спальные места: 9
Всего ком. состава: 5	Каюта капитана: Да
Каюты экипажа: 3	Койки экипажа: 5
Спальных мест экипажа: 5	Комм. состав экипажа: 2

## Корпус и палуба

---

**Материал корпуса:** GRP

**Материал палубы:** Teak

**Комплектация корпуса:** Semi-Displacement

**Цвет корпуса:** White

**Дизайнер корпуса:** Setzer Design Group

**Дизайнер экстерьера:** Setzer Design Group

**Дизайнер интерьера:** Patrick Knowles

## Информация о двигателе

---

**Двигатели:** 2

**Производитель:** DDC/MTU

**Тип двигателя:** Inboard

**Тип топлива:** Diesel

---

# ПОДРОБНОЕ ОПИСАНИЕ

---

## Main Salon

---

- Silk Roman shades
- Sofa and Loveseat - custom silk
- Ottoman
- Leather game seat chairs and table
- Formal dining area forward with seating for 8
- Samsung Smart TV HD
- Audio/Video/CD changer home theater system
- Blue Ray DVD Player
- Sony HD receiver
- Harman Kardon model AVR510 system player
- Harman Kardon DVD 50 MP3 HDCH DVD/Video/RCA HDTV digital receiver

## Office/Study - Main Deck

---

- Private office forward of galley on the main deck
- Leather office chair and desk
- Sofa
- Flat Screen TV - 30" LG
- DVD - Panasonic 5 Audio/Video/CD changer home theatre
- Amplifier - Marantz
- Epson Printer/Scanner/Copier/Email- all in one
- HP Media Center PC

## Master Stateroom and Bath

---

King size bed Dresser with drawers (port and starboard) (2) Samsung HD TV Amplifier- Sony Blue Ray DVD player - Marantz His and Hers (2) cedar lined walk in closets with drawers Satin and silk custom finishes with pearls Leather bench seating

### His and Hers Master Bathroom:

Bathrooms are separated by centrally located glass enclosed shower Finished in beautiful onyx (2) Marine heads- Headhunter systems (2) Sinks with storage below Hamper and linen storage Vanity with mirrors T.V. in each bath Sauna in shower

## Guest Staterooms

---

**VIP Stateroom forward with en-suite bathroom:**

Queen size bed with cedar-lined drawers beneath Nightstands with drawer Entertainment center Silk and satin linen with pearls Wood and silver finishings (2) Samsung HD TVs Panasonic DVD Audio/Video CD changer home theater

**VIP Bathroom:**

Vanity with sink, mirror and drawers Marine head by Headhunter Shower with tempered glass enclosure

**Port Guest Stateroom with en-suite bathroom:**

Queen size bed Wrap-around desk and dresser Drawers below lower berth Custom 100% wool carpet Sharp TV Panasonic DVD Audio/Video CD changer home theater

**Port Guest Bathroom:**

Vanity with sink, mirror and drawers Marine head by Headhunter Shower with tempered glass enclosure **Starboard Guest Stateroom with en-suite bathroom:**

Queen size bed Wrap-around desk and dresser Drawers below lower berth Custom 100% wool carpet Samsung 20" HD TV Panasonic DVD Audio/Video CD changer home theater

**Starboard Guest Bathroom:**

Vanity with sink, mirror and drawers Marine head by Headhunter Shower with tempered glass enclosure

---

**Gym (May convert to 5th Cabin)**

---

Storage cabinets TV cabinet Fold-down Pullman bunk Elliptical exerciser Sharp 21" TV Free weight dumbbell rack

---

**Captain's Cabin - Port Forward**

---

Double bed with ensuite bathroom Drawer storage with mirror Panasonic SA-HT80 AM/FM DVD player Hanging locker Safe



---

## Crew Quarters

---

Port and starboard upper and lower twin beds with ensuite bathrooms Large hanging lockers Nightstands Crew lounge with L shaped settee Flat screen TV Mini galley with sink, microwave, refrigerator Washer and dryer DVD - Panasonic 5 Audio/Video/CD changer home theater system (4) 10" Tote Vision plasma screens, one at each bunk (4) Sony Dynamic Stereo headphones

---

## Pilothouse Electronics

---

Autopilot - Robertson AP20 Autopilot jog steering - Robertson FU35 Depth/speed/trip indicator - Furuno F1-50 Depth Display - Furuno F1-50 GPS - Northstar 952X indicator Gyro compass- Robertson RGC50 24 Volt Keyboard - 2 infrared Loud hailer SEA 857 Navigational software by Nobletech Navtex receiver Furuno NX300 Panasonic 5 DVD audio/video/CD changer home theatre Samsung 30" smart TV Simrad CA50 Video Depth Rudder angle indicator- Jastram SAT phone - Fleet 77 + 2x Mini M Furuno F1-50 wind angle with true and apparent wind speeds Single side band radio ICOM IC M710 Spotlight controls- 2 x ACR RCL 100 Trac digital stabilizer display VHF radio - ICOM IC M127 VHF radio - ICOM IC M502 w/ distress button Video display monitor for security cameras Simrad OP-40 Radar / Chart Plotter

---

## Flybridge Electronics

---

Autopilot- Simrad Robertson AP20 (2) Furuno F1-50 depth/speed/log display (2) Simrad daylight view display screens GPS- Handheld and waterproof Gyro repeater- Robertson Jog steering- Simrad Robertson FU-35 Rudder angle indicator- Jastram Spotlight controller 2 x ACR RCL 100 VHF radio ICOM IC M2A waterproof DVD/FM radio monitor Simrad Radar Chart Plotter

---

## Mechanical Equipment

---

2 x MTU 16V2000 Series 1800 HP (1000 hours SMOH - as of Feb. 2016) TRAC Stabilizers - American Bow Thruster Air Conditioning- Aqua Air 60,000 BTU Bilge and fire station 2 x bilge alarms American Bow Thruster Emergency engine stop Fire supression system - Halon FE240 Fuel transfer pump and cleaning system - Alpha Laval Fuel filter Racor 500 Hydraulic and electric pump 2 x Watermakers Inc. (2200 gpd each) Walker Air Seps Water tank and fuel gauges - Headhunter (engine room and pilothouse)

---

## Electrical System

---

(2) x Onan generators (65kW each) new 2014 (250 hrs. as Feb. 2016) Generators are 240V/60 htz / single phase (2) x 24 Volt battery bank consisting of 12-2 Volt batteries (new 2014) Main engine and generator batteries (new 2014)

---

## Safety and Fire Protection

---

(2) Life rafts in canister - Switlik 15-man SOLAS A EPIRB (25) Personal flotation devices (5) Child personal flotation devices First aid kit (3) Life rings Fire Axe Fire extinguishers located throughout the yacht Fire suppression system for engine room Foam dispenser in engine room

---

## Deck Equipment

---

Anchors 2 x 400lb stockless Navy type anchors w 300' chain each Anchor - spare Fortress FX 125 plus chain and 300' of 5/8, 3 strand Chain wash Crane- Marquipt 2000lb telescoping 270 degree station Winches 2 x Maxwell 3500 hydraulically operated Windlass 2 x Maxwell 4500 hydraulic winches Professional stainless steel BBQ grill (flybridge)

---

## Tenders and Toys

---

Tender - 19' Novurania w/outboard Yamaha 115hp 4-stroke (2) Yamaha waverunner GT1300-R

---

## Remarks / Upgrades

---

ASPEN ALTERNATIVE is custom built by Sovereign with a very high end interior and an extensive equipment list. She has four cabins plus a gym with pullman berth (may be converted to fifth cabin) an owner's office/study on the main deck and an extra large flybridge. ASPEN ALTERNATIVE is a unique, well-maintained vessel and is well worth the visit. **Recent Upgrades: All new exterior paint New teak decking (2) new Onan 65 kW generators (2014) New flybridge hardtop (2014) New bottom paint (July 2015) Upgraded interior/exterior softgoods New boot stripe All running gear checked Props sent out and balanced New line cutters New LED underwater lights Stabilizers serviced All engine room piping inspected and replaced as recommended (July 2015) (2) new CCTV cameras New radar screen on flybridge New varnish on cap rails Anchor windlass recently rebuilt All mooring eyes removed and re-bedded**

---

## Exclusions

---

Versace china (2) Vespa scooters Personal artwork A detailed inventory list will be provided pursuant to a purchase agreement

---

## Исключения

---

При продаже яхты исключаются личные вещи владельца.

## Отказ от ответственности

---

Компания предоставляет описание судна или яхты добросовестно, но не может гарантировать точность этой информации, а также не ручается за техническое состояние. Покупатель должен проинструктировать своих агентов или оценщиков исследовать представленную информацию более подробно, по собственному желанию. Продажа судна или яхты, изменение цены или снятие с продажи будет происходить без предварительного уведомления.

# ФОТОГРАФИИ

**Main Deck Aft**



**Main Deck Aft**



**Main Salon**



**Main Salon**



**Main Salon**



**Main Salon**



**Formal Dining**



**Day Head**



**Galley**



**Galley**



**Office/Study**



**Lower Deck Guest Foyer**



**Master Stateroom**



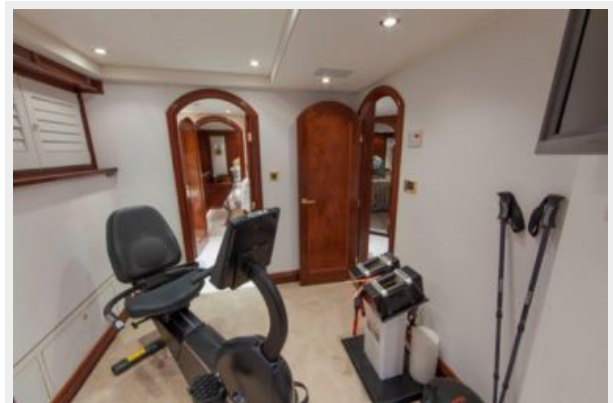
**His-Her Master Bath**



**Master Shower**



**Gym**



**Stbd Queen Guest Stateroom**



**Guest Head**



**Port Queen Guest Stateroom**



**Guest Stateroom #4**



**Guest Head**



**Pilothouse**



**Pilothouse Settee / Observation Area**



**Upper Helm Station**



**Flybridge Seating and Table**



**Flybridge Dining Table**



**Flybridge BBQ and Lounges**



**Flybridge Bar**



**Flybridge Aft**



**Foredeck Seating**





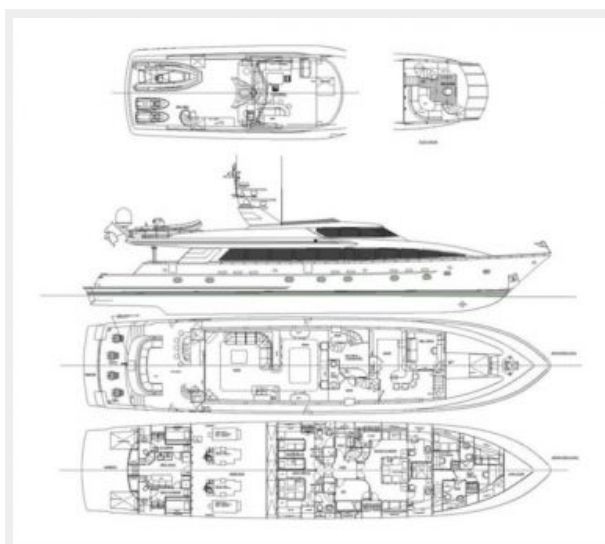
## ASPEN ALTERNATIVE



## ASPEN ALTERNATIVE



## Layout



# КОНТАКТЫ

---

Андрей Шестаков (Andrey Shestakov) – ведущий яхтенный брокер отдела продаж яхт и судов компании Shestakov Yacht Sales Inc. Официальный представитель Shestakov Yacht Sales Inc. для русскоговорящих клиентов в центральном офисе компании в Майами/Форт Лодердейл/Флорида/США.

## Контактная информация

---

Email: [andrey@shestakovyachtsales.com](mailto:andrey@shestakovyachtsales.com)

Web: [shestakovyachtsales.com](http://shestakovyachtsales.com)

## Телефоны

---

Краснодарский край: **+7(918)465-66-44**

США, Майами, Флорида: **+1(954)274-4435**

## Время работы

---

Понедельник – Суббота: **9:00 - 21:00**  
EDT

Воскресенье: **Закрито**

## Адрес

---



Harbour Towne Marina, 850 NE 3rd St,  
STE 213, Dania, FL 33004